

# Plasma Protein Biomarkers Distinguish Multisystem Inflammatory Syndrome in Children From Other Pediatric Infectious and Inflammatory Diseases

Sophya Yeoh, MPhil, \* Diego Estrada-Rivadeneira<sup>1</sup>, PhD, \*† Heather Jackson, PhD, \*† Ilana Keren, \* Rachel Galassini<sup>2</sup>, MSc, \* Samantha Cooray<sup>3</sup>, MBBS, PhD, \*† Priyen Shah<sup>4</sup>, MBBS, PhD, \*† Philipp Agyeman<sup>5</sup>, MD, ‡ Romain Basmaci<sup>6</sup>, MD, PhD, §¶ Enitan Carrol<sup>7</sup>, MD, FRCPCH, || Marieke Emonts<sup>8</sup>, MD, PhD, \*\*†‡‡ Colin Fink<sup>9</sup>, PhD, §§ Taco Kuijpers<sup>10</sup>, MD, PhD, ¶¶||| Federico Martinon-Torres<sup>11</sup>, MD, PhD, \*\*\*†††‡‡‡ Marine Mommert-Tripon<sup>12</sup>, PhD, §§§ Stephane Paulus, MD, FRCPCH, ¶¶¶ Marko Pokorn<sup>13</sup>, MD, PhD, ||||| Pablo Rojo, MD, PhD, \*\*\*\* Lorenza Romani<sup>14</sup>, MD, †††† Luregn Schlapbach<sup>15</sup>, MD, PhD, ‡‡‡‡§§§§ Nina Schweintzger<sup>16</sup>, PhD, ¶¶¶¶ Ching-Fen Shen, MSc, MD, ||||| Maria Tsolia<sup>17</sup>, MD, PhD, \*\*\*\*\* Effua Usuf, MBChB, MSc, PhD, ††††† Michiel van der Flier<sup>18</sup>, MD, PhD, ‡‡‡‡‡‡ Clementien Vermont, MD, PhD, §§§§§ Ulrich von Both<sup>19</sup>, MD, FRCPCH, ¶¶¶¶¶ Shunmay Yeung<sup>20</sup>, PhD, FRCPCH, ||||| Dace Zavadska<sup>21</sup>, MD, PhD, \*\*\*\*\* Lachlan Coin<sup>22</sup>, PhD, †††††† Aubrey Cunnington<sup>23</sup>, BMBCh, PhD, \*† Jethro Herberg<sup>24</sup>, PhD, \*† Michael Levin, FMedSci, \*† Myrsini Kafrou<sup>25</sup>, PhD, \*† and Shea Hamilton<sup>26</sup> PhD, \*† on behalf of the PERFORM, DIAMONDS and UK KD Genetic Consortia

Accepted for publication December 19, 2023

\*From the Department of Infectious Disease, Faculty of Medicine; †Centre for Paediatrics and Child Health, Imperial College London, London, United Kingdom; ‡Department of Pediatrics, Inselspital, Bern University Hospital, University of Bern, Bern, Switzerland; §Service de Pédiatrie-Urgences, AP-HP, Hôpital Louis-Mourier, Colombes, France; ¶Infection, Antimicrobials, Modelling, Evolution, Université Paris Cité, Inserm, IAME, Paris, France; ||Department of Clinical Infection Microbiology and Immunology, University of Liverpool Institute of Infection, Veterinary and Ecological Sciences, Liverpool, United Kingdom; \*\*Translational and Clinical Research Institute, Newcastle upon Tyne Hospitals NHS Foundation Trust, Newcastle upon Tyne, United Kingdom; ††Paediatric Infectious Diseases and Immunology Department, Newcastle upon Tyne Hospitals Foundation Trust, Great North Children's Hospital; ‡‡NIHR Newcastle Biomedical Research Centre, Newcastle upon Tyne Hospitals NHS Trust and Newcastle University, Newcastle upon Tyne, United Kingdom; §§Micropathology Ltd., University of Warwick, Warwick, United Kingdom; ¶¶Department of Pediatric Immunology, Rheumatology, and Infectious Diseases, Emma Children's Hospital, Amsterdam University Medical Centre; ||||Sanquin Research, Department of Blood Cell Research, Landsteiner Laboratory, Amsterdam University Medical Centre, Amsterdam, Netherlands; \*\*\*Translational Paediatrics and Infectious Diseases, Hospital Clínico Universitario, Universidad de Santiago de Compostela; †††Genetics, Vaccines and Paediatric Infectious Diseases Research Group (GENVIP), Instituto de Investigación Sanitaria de Santiago, Universidade de Santiago de Compostela (USC), Galicia, Spain; ‡‡‡CIBER Enfermedades Respiratorias (CIBERES), Instituto de Salud Carlos III, Madrid, Spain; §§§Open Innovation and Partnerships Department, bioMérieux, Lyon, France; ¶¶¶Oxford Vaccine Group, Department of Paediatrics, University of Oxford and the NIHR Oxford Biomedical Research Centre, Oxford, United Kingdom; |||||Division of Pediatrics, University Medical Centre Ljubljana, Medical Faculty, University of Ljubljana, Ljubljana, Slovenia; \*\*\*\*Pediatric Infectious Diseases Unit, Pediatric Department, Hospital Doce de Octubre, Madrid, Spain; ††††Infectious Disease Unit, Academic Department of Pediatrics, Bambino Gesù Children's Hospital, IRCCS, Rome, Italy; ‡‡‡‡Department of Intensive Care and Neonatology, Children's Research Center, University Children's Hospital, Zurich, Switzerland; §§§§Child Health Research Centre, The University of Queensland, Brisbane, Australia; ¶¶¶¶Department of Pediatrics and Adolescent Medicine, Division of General Pediatrics, Medical University of Graz, Graz, Austria; |||||Department of Pediatrics, National Cheng Kung University Hospital, College of Medicine, National Cheng Kung University, Tainan, Taiwan; \*\*\*\*\*Second Department of Paediatrics, National and Kapodistrian University of Athens (NKUA), School of Medicine, P and A. Kyriakou Children's Hospital, Athina, Athens, Greece; †††††Medical Research Council

ISSN: 0891-3668/24/435-444453  
DOI: 10.1097/INF.0000000000004267

Unit, The Gambia at the London School of Hygiene and Tropical Medicine, Fajara, The Gambia; †††††Department of Paediatric Infectious Diseases and Immunology, Wilhelmina Children's Hospital, University Medical Centre Utrecht, Utrecht, Netherlands; §§§§§Department of Paediatric Infectious Diseases and Immunology, Erasmus MC Sophia Children's Hospital, Rotterdam, Netherlands; ¶¶¶¶¶Division of Pediatric Infectious Diseases, Department of Pediatrics, Dr von Hauner Children's Hospital, University Hospital, LMU Munich, Munich, Germany; |||||Clinical Research Department, Faculty of Infectious and Tropical Disease, London School of Hygiene and Tropical Medicine, London, United Kingdom; \*\*\*\*\*Children's Clinical University Hospital, Riga, Latvia; and ††††††Department of Microbiology and Immunology, University of Melbourne at The Peter Doherty Institute for Infection and Immunity, Melbourne, Australia.  
Supported by the European Union's Horizon 2020 Program under grants [848196 DIAMONDS, 668303 PERFORM, (M.L.)] and the UK National Institute for Health Research Imperial Biomedical Research Centre at Imperial College [WMNP\_P69099 (J.H. and M.L.)], the Javon Charitable Trust (M.L.) and the Children of St Mary's Intensive Care Kawasaki Disease Research Fund (J.H. and M.L.).

The authors have no conflicts of interest to disclose.  
This manuscript was previously posted to medRxiv: <https://www.medrxiv.org/content/10.1101/2023.07.28.23293197>.  
S.Y., D.E.-R. and H.J. have contributed equally to this work.  
M.K., J.H., A.C., M.L., S.H.: conceptualization; M.K., D.E.-R., I.K., S.Y., H.J., S.H.: methodology; S.Y., D.E.-R., I.K., S.H.: validation; S.Y., S.H., H.J., M.K.: formal analysis; S.Y., M.K., M.L., D.E.-R., I.K., H.J., J.H., R.G., S.C., A.C., S.H.: original draft preparation; L.C., P.S., P.A., R.B., E.C., M.E., C.F., T.K., F.M.-T., M.M.-T., S.P., M.P., P.R., L.R., L.S., N.S., C.-F.S., M.T., E.U., M.V.F., C.V., U.V.B., S.Y., D.Z.: reviewing and editing; P.S., R.G., S.C., J.H., A.C., P.A., R.B., E.C., M.E., C.F., T.K., F.M.-T., S.P., M.P., P.R., L.R., L.S., N.S., C.-F.S., M.T., E.U., M.V.F., C.V., U.V.B., S.Y., D.Z.: recruited and phenotyped patients used in this study; H.J., R.G., P.S., P.A., R.B., E.C., M.E., C.F., T.K., F.M.-T., M.M.-T., S.P., M.P., P.R., L.R., L.S., N.S., C.-F.S., M.T., E.U., M.V.F., C.V., U.V.B., S.Y., D.Z., L.C., A.C., J.H., M.K., S.H., M.L.: acquisition of funding.  
Supplemental digital content is available for this article. Direct URL citations appear in the printed text and are provided in the HTML and PDF versions of this article on the journal's website ([www.pidj.com](http://www.pidj.com)).  
Address for correspondence: Shea Hamilton, PhD, Department of Infectious Disease, Faculty of Medicine, Imperial College London, London, SW7 2AZ, United Kingdom. E-mail: [s.hamilton@imperial.ac.uk](mailto:s.hamilton@imperial.ac.uk).  
Copyright © 2024 The Author(s). Published by Wolters Kluwer Health, Inc. This is an open access article distributed under the Creative Commons Attribution License 4.0 (CCBY), which permits unrestricted use, distribution, and reproduction in any medium, provided the original work is properly cited.

Downloaded from <http://journals.lww.com/pidj> by BhDWf6P6Kav1Z5Eum1TQ1N4a+KJLHeZp8isH04XIM0hCwCX1AW nYQp/IOH-HD313D00R5Y7T7VSF14C3V4/DA/pdDabK24Y6H515K-E= on 06/14/2024

**Background:** Multisystem inflammatory syndrome in children (MIS-C) is a rare but serious hyperinflammatory complication following infection with severe acute respiratory syndrome coronavirus 2. The mechanisms underpinning the pathophysiology of MIS-C are poorly understood. Moreover, clinically distinguishing MIS-C from other childhood infectious and inflammatory conditions, such as Kawasaki disease or severe bacterial and viral infections, is challenging due to overlapping clinical and laboratory features. We aimed to determine a set of plasma protein biomarkers that could discriminate MIS-C from those other diseases.

**Methods:** Seven candidate protein biomarkers for MIS-C were selected based on literature and from whole blood RNA sequencing data from patients with MIS-C and other diseases. Plasma concentrations of ARG1, CCL20, CD163, CORIN, CXCL9, PCSK9 and ADAMTS2 were quantified in MIS-C (n = 22), Kawasaki disease (n = 23), definite bacterial (n = 28) and viral (n = 27) disease and healthy controls (n = 8). Logistic regression models were used to determine the discriminatory ability of individual proteins and protein combinations to identify MIS-C and association with severity of illness.

**Results:** Plasma levels of CD163, CXCL9 and PCSK9 were significantly elevated in MIS-C with a combined area under the receiver operating characteristic curve of 85.7% (95% confidence interval: 76.6%–94.8%) for discriminating MIS-C from other childhood diseases. Lower ARG1 and CORIN plasma levels were significantly associated with severe MIS-C cases requiring intropes, pediatric intensive care unit admission or with shock.

**Conclusion:** Our findings demonstrate the feasibility of a host protein biomarker signature for MIS-C and may provide new insight into its pathophysiology.

**Key Words:** MIS-C, SARS-CoV-2, Kawasaki, pediatric, biomarker

(*Pediatr Infect Dis J* 2024;43:444–453)

Although children have been generally less severely affected than adults by COVID-19 infection, a small proportion of children develop a rare but serious hyperinflammatory condition termed multisystem inflammatory syndrome in children (MIS-C) or pediatric inflammatory multisystem syndrome temporally associated with COVID-19.<sup>1</sup> MIS-C usually develops 2–6 weeks following severe acute respiratory syndrome coronavirus 2 (SARS-CoV-2) infection, with children presenting with febrile illness and a multisystem hyperinflammatory state that shows some overlapping clinical characteristics with other infectious and inflammatory childhood disorders including Kawasaki disease (KD) and severe bacterial infections such as toxic shock syndrome (TSS).<sup>2–4</sup>

MIS-C leads to critical illness in ~70% of affected children and, as of October 2023, the Centers for Disease Control and Prevention have reported 9577 cases meeting the full clinical definitions of this novel disorder.<sup>5</sup> While there was no centralized database for reporting MIS-C cases in Europe, 216 cases meeting the full clinical criteria were reported between January and July 2020 in the United Kingdom and Ireland.<sup>3</sup> MIS-C has been reported to have a higher incidence in older children, males and in children of Black, Asian or Hispanic ethnicity.<sup>6–8</sup> Common symptoms of MIS-C include persistent fever, oral mucosal inflammation, conjunctivitis, skin rash, elevated inflammatory markers, gastrointestinal (GI) involvement, cardiac manifestations, multisystem organ dysfunction and shock.<sup>9</sup>

KD is an acute systemic vascular disease of unknown etiology affecting predominately the coronary arteries in infants and children.<sup>10,11</sup> The standard treatment for KD patients is high-dose intravenous immunoglobulin (IVIG), which can quickly alleviate symptoms and reduce the incidence of coronary artery aneurysms.<sup>12</sup>

As there is currently no diagnostic test for KD, the diagnosis heavily relies on clinical signs and symptoms, which include high levels of markers of inflammation and mucosal changes. Approximately 40% of patients with MIS-C will meet the diagnostic criteria for KD and, due to the overlapping clinical and laboratory features, IVIG was recommended as a first-line treatment for MIS-C.<sup>5,13</sup> However, recent evidence has shown that treatment of MIS-C with corticosteroids has the same outcome as IVIG treatment, which is important because corticosteroids are cheap and readily available in low- and middle-income countries.<sup>14,15</sup> A diagnostic test to distinguish between these 2 diseases would, therefore, greatly benefit treatment and patient outcome.

Host-derived protein biomarkers have been successfully used to distinguish bacterial from viral infection in children.<sup>16</sup> It has been reported that elevated levels of soluble biomarkers associated with inflammation, vascular endothelial injury, mucosal immune dysregulation, septic shock and cardiac and GI involvement have been observed in MIS-C.<sup>2,6–8,17–20</sup> From a proteomic perspective, it has also been suggested that there are clinical similarities between MIS-C and secondary causes of hemophagocytic lymphohistiocytosis such as macrophage activation syndrome (MAS) and thrombotic microangiopathy, in addition to its clinical similarities with KD and TSS.<sup>19</sup> These studies have singled out potential individual biomarkers of MIS-C, such as cysteine-cysteine motif chemokine ligand 20 (CCL20), C-X-C motif chemokine ligands 9 and 10 (CXCL9, CXCL10), interferon-gamma (IFN- $\gamma$ ), interleukins 6, 7, 8 and 10 (IL-6, IL-7, IL-8 and IL-10), phospholipase A2 group IIA, tumor necrosis factor alpha (TNF- $\alpha$ ), nuclear factor kappa B and zonulin. However, the results differ between studies, which may be due to the different comparator groups that were used.

In this study, we aimed to identify a set of proteins that could distinguish MIS-C from other disease groups, including KD, definite bacterial infections (DB) and definite viral infections (DV) by quantifying plasma protein levels of candidate MIS-C biomarkers. Such a protein signature could be used as the basis for a diagnostic test. We also aimed to associate significant changes in individual protein levels with clinical presentation, such association could be further investigated to predict disease severity or inform clinical management.

## MATERIALS AND METHODS

### Ethics Statement

Informed consent was taken from all patients recruited to the study. Recruitment at all locations took place after ethical permissions were in place for that area. In the DIAMONDS study (Diagnosis and Management of Febrile Illness using RNA Personalized Molecular Signature Diagnosis, <https://www.diamonds2020.eu>) and the PERFORM study (Personalized Risk assessment in Febrile illness to Optimize Real-life Management, <https://www.diamonds2020.eu/our-research-history/perform/>), the consortium agreed on a finalized protocol and supporting documents that were translated into local languages. Each participating country took responsibility for gaining ethical approval in their region. For DIAMONDS, the lead site received ethical approval for United Kingdom centers from the London-Dulwich research ethics committee (20/HRA/1714). For the PERFORM study, the lead site received ethical approval for United Kingdom centers from the London-Central research ethics committee (16/LO/1684). The Genetic Determinants of Kawasaki Disease for Susceptibility and Outcome study recruited in the United Kingdom only, and ethical approval was granted by the London-Fulham research ethics committee (13/LO/0026). During the conduct of the study, clinical data and samples were identified only by anonymized study numbers.

## Study Population

This study included 108 pediatric patients ( $\leq 16$  years old) with clinical and laboratory-confirmed MIS-C ( $n = 22$ ), KD ( $n = 23$ ), DB ( $n = 28$ ), DV ( $n = 27$ ) and healthy controls (HC,  $n = 8$ ). A breakdown of the DB and DV can be found in Figure, Supplemental Digital Content 1, <http://links.lww.com/INF/F417>. The World Health Organization (WHO) defines MIS-C as children 0–19 years of age with fever  $\geq 3$  days and elevated inflammatory markers [including C-reactive protein (CRP), procalcitonin and erythrocyte sedimentation rate] who have no other obvious microbial cause of inflammation, including bacterial sepsis, staphylococcal or streptococcal shock syndromes and evidence of SARS-CoV-2 infection or probable exposure.<sup>21</sup> They must also exhibit 2 of the most common features of MIS-C including GI symptoms, rash or bilateral conjunctivitis, hypotension, shock or cardiac complications. All MIS-C patients met the WHO criteria, which was the recommended criteria at the time. Plasma samples from all of the other disease groups (KD, DB, DV) were collected before the COVID-19 pandemic (October 2013–January 2019). Plasma samples from KD patients were collected before receiving IVIG treatment in 21 of 23 cases used in this study. All DB and DV patients were phenotyped according to our published algorithm and as previously described.<sup>22–24</sup> In brief, the DB group included patients in whom an appropriate bacterial pathogen was isolated from a normally sterile site and a diagnosis of DV was conditional upon identification of a virus compatible with the clinical syndrome with no evidence of bacterial infection and CRP  $\leq 60$  mg/L. No deaths occurred in this study population. Samples were taken at hospital presentation or admission for all disease groups.

## Protein Selection

Proteins were selected either through candidate gene biomarkers identified by RNA sequencing (RNA-Seq) or through existing literature at the time of this study design.

Whole blood transcriptome profiling was performed using RNA-Seq on samples obtained from patients with MIS-C, KD, DB, DV and HC. Following preprocessing and normalization, which is described in detail in Jackson et al,<sup>25</sup> differential expression analysis was performed to identify the genes that were significantly differentially expressed (SDE) between MIS-C and KD, DB and DV. Differential expression analysis was performed using DESeq2 with models including age, sex at birth and RNA-Seq batch, as 2 experimental runs were used for sequencing.<sup>26</sup> The following comparisons were made: MIS-C versus KD + DB + DV; MIS-C versus KD; MIS-C versus DB; MIS-C versus DV.  $P$  values were adjusted for multiple testing using the Benjamini-Hochberg (BH) adjustment and genes with adjusted  $P$  values  $< 0.05$  were considered SDE.<sup>27</sup>

Genes of interest were selected based on the criteria that they were significantly upregulated in MIS-C cases as compared to one or more of the other disease groups. Due to the high number of SDE genes, we selected genes with BH-adjusted  $P$  values  $< 10^{-5}$  and a log-fold change  $> 2$  and those that encoded for extracellularly secreted proteins for which antibodies were commercially available were considered. The final proteins chosen based on the RNA-Seq data were ADAMTS2, ARG1, CD163, CORIN and PCSK9.

Two additional protein targets, CCL20 and CXCL9, were selected based on existing MIS-C literature at the time of this study because of their reported roles in the GI involvement and hyperinflammatory state observed early in the course of MIS-C disease, respectively.<sup>6,17,28</sup>

## Enzyme-linked Immunosorbent Assay (ELISA)

Plasma concentrations of ADAMTS2 were quantified using a commercial enzyme-linked immunosorbent assay kit, human

ADAMTS2 (Abbeva, abx519366, Cambridge) according to the manufacturer's protocol. Samples were randomized, diluted 1:10 in sample diluent buffer and run in duplicate. Absorbance was measured at 450 nm on a SpectraMax microplate reader (Molecular Devices) and a standard curve was created using the SoftMax Pro software (version 5.0, San Jose, CA). Samples that fell below the lower limit of quantification were reanalyzed and values that were still below the lower limit of quantification were extrapolated as half of the lowest standard value.

## Multiplex Immunoassay

Plasma concentrations of ARG1, CCL20, CD163, CORIN, CXCL9 and PCSK9 were quantified using customized multiplex immunoassay kits from MSD (Meso Scale Discovery, Rockville, MD). CD163 (MSD, FCorrected21J4) and PCSK9 (MSD, F21ABA) were multiplexed on a 2-assay plate (MSD, K15227N) according to the manufacturer's instructions with samples diluted 1:20 in assay diluent and run in duplicate. ARG1 (MSD, F21Q1), CCL20 (MSD, B21UZ), CORIN (MSD, F210B) and CXCL9 (MSD, F210I) were multiplexed on a 4-assay plate (MSD, K15229N) according to the manufacturer's instructions with samples diluted 1:2 in assay diluent and run in duplicate. Two control plasma samples were included on each plate to account for interplate variation. All plates were analyzed on the Meso Quick Plex SQ120 Instrument (MSD). Data were generated on the Methodological Mind software (version 1.0.36) and analyzed using Discovery Workbench software (version 4.0, MSD).

## Statistical Analysis

All statistical analyses were performed using R (version 4.1.1).<sup>29</sup> Individual protein results were analyzed using the non-parametric Kruskal-Wallis test, followed by the Mann-Whitney  $U$  test to evaluate the differences between each cohort. Principal component (PC) analysis was used to visualize the data. Kruskal-Wallis  $P$  values were corrected using the Bonferroni procedure, as were Mann-Whitney  $U$   $P$  values. Associations between each of the protein markers and clinical variables were tested, using the Mann-Whitney  $U$  test for binary categorical variables [pediatric intensive care unit (PICU) admission: yes or no; oxygen requirement: yes or no; noninvasive ventilation requirement: yes or no; inotrope requirement: yes or no; cardiac involvement: yes or no; GI involvement: yes or no; rash: yes or no; conjunctivitis: yes or no] and linear regression models for continuous variables [body mass index, days of symptoms when sample was taken, CRP levels, white blood cell (WBC) levels, neutrophil levels, lymphocyte levels, monocyte levels and platelet levels]. All  $P$  values were corrected for multiple testing using the Bonferroni procedure (corrected per clinical/laboratory variable). Clinical and laboratory variables included admission to the PICU, oxygen or ventilation requirement (invasive or non-invasive), inotrope administration, duration of symptoms at the time samples were taken, neutrophils, lymphocytes, platelets, CRP, WBC counts and presentation of symptoms including cardiac and GI involvement, rash, shock and conjunctivitis.

The distinguishing ability of each of the proteins that were significantly differentially abundant between MIS-C and other disease groups was evaluated using the area under the receiver operating characteristic curve (AUC). The performance of the proteins when combined into a multivariate model was also evaluated, with the proteins combined using the simple disease risk score first described in Herberg et al,<sup>22</sup> and calculated as follows:

$$\text{simple DRS}_i = \sum_{k=1}^n \text{value}_k^i - \sum_{l=1}^m \text{value}_l^i$$



where  $n$  and  $m$  are the proteins that increase and decrease, respectively, in MIS-C versus other disease groups. CRP was added to the protein model to determine whether its inclusion would improve model performance.

## RESULTS

### Clinical Features

One hundred eight samples were included in this study, with the patient demographic and clinical characteristics summarized in Table 1. All 22 MIS-C patients met the WHO case definitions for inclusion.<sup>21</sup> A higher proportion of cases were male (68.2%,  $n = 15$ ) and the median age of the patients was higher in MIS-C than in the other disease comparator groups. Over half of MIS-C cases ( $n = 12$ , 54.5%) required PICU admission and many cases ( $n = 18$ , 81.8%) presented with GI symptoms.

### Candidate Protein Biomarkers

Seven protein biomarkers for distinguishing MIS-C from other pediatric infectious and inflammatory diseases were selected through unbiased analyses of host transcriptomic profiles obtained from children with MIS-C<sup>25</sup> as well as from the literature. These included ADAMTS2, ARG1, CD163, CORIN and PCSK9, which were selected from RNA-Seq, and CCL20 and CXCL9, which were selected from the literature (see Table, Supplemental Digital Content 2, <http://links.lww.com/INF/F418>). Genes were selected based on BH-adjusted  $P$  values  $<10^{-5}$ , a log-fold change  $>2$  and if they encoded for extracellularly secreted proteins.

All proteins were measured in a cohort of children with MIS-C, KD, DB or DV and HC. When visualized using PC analysis, the disease group was clearly captured by PC 1, with a correlation of 47% ( $P$  value:  $3.3 \times 10^{-7}$ ) between PC1 and whether a patient had MIS-C. Sex and age had a correlation of  $-1.8\%$  and  $7.9\%$ , respectively, with PC1 (see Figure, Supplemental Digital Content 3, <http://links.lww.com/INF/F419>).

### CD163, CXCL9 and PCSK9 Are Significantly Differentially Abundant in MIS-C Versus Other Diseases and Healthy Controls

Pediatric plasma samples were analyzed from MIS-C ( $n = 22$ ), KD ( $n = 23$ ), DB ( $n = 28$ ), DV ( $n = 27$ ) and HC ( $n = 8$ ). The protein concentrations were compared between MIS-C and other diseases (KD, DB, ad DV combined) and HC to evaluate how well the proteins would be able to discriminate MIS-C from non-MIS-C groups (eg, MIS-C vs. KD, DB, DV, HC). The protein concentrations were then compared between MIS-C against each diagnostic group individually.

When protein abundance levels were compared between MIS-C and all other comparator groups combined (ie, HC, KD, DB, DV), significant differences were observed for PCSK9 (Bonferroni-adjusted  $P$  value:  $2.1 \times 10^{-3}$ ; Fig. 1A), CD163 (Bonferroni-adjusted  $P$  value:  $8.0 \times 10^{-6}$ ; Fig. 1B), CXCL9 (Bonferroni-adjusted  $P$  value:  $1.3 \times 10^{-5}$ ; Fig. 1C) and CORIN (Bonferroni-adjusted  $P$  value:  $4.7 \times 10^{-2}$ ). For CD163, CXCL9 and PCSK9, levels were elevated in MIS-C versus all other comparator groups, with significant  $P$  values when pairwise comparisons were performed using the Mann-Whitney  $U$  test, for all comparisons except for MIS-C versus DB for PCSK9 (see Table, Supplemental Digital Content 4, <http://links.lww.com/INF/F420>). When the correlations between symptom duration and protein levels of CD163, CXCL9 and PCSK9 were tested in MIS-C patients, none of the 3 proteins were significantly correlated.

For CORIN, we observed a significant Bonferroni-adjusted  $P$  value of 0.02 for MIS-C versus DV; however, none of the other pairwise comparisons between MIS-C and the other phenotype groups were significantly different. Although CORIN was significant using the Kruskal-Wallis test, we chose to exclude this protein from our final signature as this difference was only present for MIS-C versus DV. ADAMTS2, ARG1 and CCL20 showed no significant difference (adjusted  $P$  value  $>0.05$ ) between MIS-C and both HC and other diseases, nor between MIS-C and each disease group individually.

### A 3-protein Signature Can Distinguish MIS-C From Other Pediatric Infectious and Inflammatory Diseases

The performance of PCSK9, CD163 and CXCL9 when combined into a 3-protein signature was evaluated, returning an overall AUC of 85.7% [95% confidence interval (CI): 76.6%–94.8%] for distinguishing between MIS-C and DB, DV and KD (Fig. 2A). When broken down into pairwise comparisons, the 3-protein signature showed the best performance for MIS-C versus DB with an AUC of 88.0% (95% CI: 78.1%–97.9%; Fig. 2B), followed by MIS-C versus DV with an AUC of 85.3% (95% CI: 74.6%–95.9%; Fig. 2C) and then MIS-C versus KD with an AUC of 83.2% (95% CI: 69.9%–96.5%; Fig. 2D).

The performance of smaller combinations of proteins was also evaluated to determine whether all 3 markers (PCSK9, CD163 and CXCL9) were required in the model (Table, Supplemental Digital Content 5, <http://links.lww.com/INF/F421>). The combination of all 3 proteins was optimal for distinguishing MIS-C from all groups combined (DB, DV, KD), and also for MIS-C versus DB. For MIS-C versus DV and MIS-C versus KD, CD163 + PCSK9 demonstrated the best performance. Despite this improved performance for these comparisons, the 3-protein signature was taken forward for subsequent analyses given the importance in distinguishing MIS-C from severe bacterial infections and the implications for treatment administration.

CRP is a widely measured biomarker, often used for identifying bacterial infections.<sup>30</sup> Given the widespread availability of CRP measurement, we evaluated whether adding CRP to the 3-protein model improved its diagnostic performance (Table, Supplemental Digital Content 5, <http://links.lww.com/INF/F421>). The 3-protein signature + CRP improved the performance for MIS-C versus KD by 9%; however, a 16% reduction in performance was observed for MIS-C versus DB. CRP could not be accurately assessed for the classification of MIS-C versus DV, as CRP was used in the initial clinical assignment of DV patients (DV patients were required to have CRP  $<60$  mg/L).

### Lower ARG1 and CORIN Plasma Levels Are Associated With Severity in MIS-C

Associations between plasma protein concentrations and clinical variables were tested (Table 2). Lower levels of ARG1 were observed in MIS-C patients admitted to PICU (Fig. 3A; Table 2; Bonferroni-adjusted  $P$  value: 0.014) and requiring inotrope administration (Fig. 3B; Table 2; Bonferroni-adjusted  $P$  value: 0.027), suggesting that reduced ARG1 concentration is associated with severity of MIS-C. Lower levels of CORIN were observed among patients who experienced shock (Fig. 3C; Table 2; Bonferroni-adjusted  $P$  value:  $4.8 \times 10^{-3}$ ). Where data were available, associations were also tested in DB, DV and KD for ARG1 and inotrope requirement and PICU admission, and for CORIN levels and shock. No significant associations were observed. When evaluating whether the level of clinical

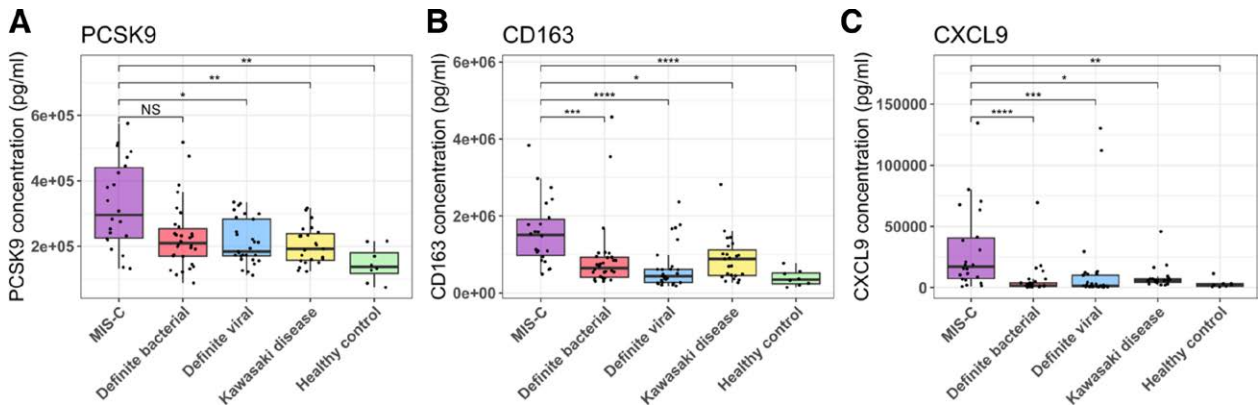
Downloaded from http://journals.lww.com/pidj by BhDWf6ePpHkavIzEoum1QIN4a+KkLhEzqpsIHq4XW0h0CwCX1AVw on 06/14/2024

**TABLE 1. Demographic and Clinical Characteristics of the Patients With MIS-C, DB, DV and KD used for the Enzyme-linked Immunosorbent Assay and Meso Scale Discovery Validation Assay**

	MIS-C (n = 22)	DB (n = 27)	DV (n = 28)	KD (n = 23)	HC (n = 8)
<b>Demographics</b>					
Age	8.0 (6.0–12.2)	3.8 (2.4–8.3)	1.1 (0.4–3.4)	3.0 (1.4–4.0)	12.8 (7.3–14.8)
Sex (male, %)	15 (68%)	15 (56%)	14 (50%)	14 (61%)	6 (75%)
Race (n, %)					
White/European	10 (45%)	22 (82%)	14 (50%)	7 (30%)	8 (100%)
East/West/South Asian	6 (27%)	2 (7%)	8 (29%)	6 (26%)	0 (0%)
Black/African/Caribbean	3 (14%)	1 (4%)	4 (14%)	7 (30%)	0 (0%)
Other	3 (14%)	2 (7%)	2 (7%)	3 (13%)	0 (0%)
Sample period	August 2020–September 2021	December 2016–January 2019	February 2017–January 2019	October 2013–June 2018	August 2018–March 2020
<b>Treatment</b>					
Antibiotics (n, %)	22 (100%)	18 (67%)	14 (50%)	23 (100%)	0 (0%)
Inotropes (n, %)	6 (27%)	4 (15%)	3 (11%)	0 (0%)	0 (0%)
Oxygen (n, %)	3 (14%)	9 (33%)	14 (50%)	0 (0%)	0 (0%)
Noninvasive ventilation (n, %)	2 (9%)	1 (4%)	10 (36%)	0 (0%)	0 (0%)
Invasive ventilation (n, %)	1 (5%)	7 (26%)	14 (50%)	0 (0%)	0 (0%)
<b>Clinical features</b>					
Days from onset of symptoms	6.5 (5.0–7.0)	3.0 (2.0–5.5)	3.0 (2.0–5.0)	6.0 (5.0–8.0)	N/A
Admitted to PICU (n, %)	12 (55%)	10 (37%)	16 (57%)	1 (4%)	0 (0%)
GI involvement (n, %)	18 (82%)	3 (11%)	2 (7%)	4 (17%)	1 (13%)
Cardiac (n, %)	3 (14%)	0	1 (4%)	9 (39%)	0 (0%)
Pulmonary (n, %)	1 (5%)	2 (7%)	5 (18%)	N/A	0 (0%)
Neurologic (n, %)	3 (14%)	2 (7%)	4 (14%)	N/A	0 (0%)
Shock (n, %)	5 (23%)	5 (19%)	2 (7%)	N/A	0 (0%)
Sepsis (n, %)	0	13 (48%)	5 (18%)	N/A	0 (0%)
Comorbidities (n, %)	8 (36%)	7 (26%)	11 (39%)	13 (57%)	0 (0%)
<b>Blood parameters</b>					
Max CRP (mg/L)	241.0 (191.0–301.8)	225.0 (125.7–343.6)	19.2 (4.9–35.2)	89.1 (62.8–136.0)	N/A
Hemoglobin (g/L)	107.0 (95.8–118.8)	104.0 (94.3–115.8)	104.0 (91.0–123.8)	N/A	N/A
Creatinine (μmol/L)	44.5 (35.3–52.8)	44.1 (27.1–59.7)	33.0 (28.0–47.0)	N/A	N/A
ALT (IU/L)	25.5 (21.0–36.0)	11.0 (10.0–23.0)	24.0 (16.5–38.5)	N/A	N/A
Bilirubin (μmol/L)	5.0 (5.0–7.0)	8.5 (4.3–16.5)	5.0 (3.5–12.3)	N/A	N/A
Albumin (g/L)	24.5 (22.3–27.0)	32.5 (29.3–37.3)	30.5 (26.0–34.8)	N/A	N/A
White blood cells (10 <sup>9</sup> /L)	11.5 (6.0–16.3)	17.4 (13.6–27.1)	7.6 (5.7–10.8)	12.3 (10.6–14.1)	N/A
Neutrophils (10 <sup>9</sup> /L)	8.4 (5.9–12.2)	13.3 (9.7–19.4)	3.3 (1.6–4.7)	8.3 (6.9–11.2)	N/A
Lymphocytes (10 <sup>9</sup> /L)	1.3 (0.6–1.8)	2.5 (1.8–3.7)	3.1 (2.1–4.5)	2.5 (1.7–3.0)	N/A
Monocytes (10 <sup>9</sup> /L)	0.4 (0.2–0.8)	1.2 (0.9–2.3)	0.8 (0.6–1.3)	0.7 (0.5–0.9)	N/A
Platelets (10 <sup>9</sup> /L)	238.5 (113.3–321.8)	269.5 (221.0–430.0)	272.0 (230.0–321.0)	330.0 (62.8–136.0)	N/A

Values are median (IQR) unless stated.

ALT indicates alanine aminotransferase; DB, bacterial infection; DV, viral infection; IQR, interquartile range; N/A, not available/not applicable.



**FIGURE 1.** Boxplots showing concentrations of proteins with significantly different levels between MIS-C and the comparator groups (KD, DB, DV, HC). Boxplots are shown for PCSK9 (A), CD163 (B) and CXCL9 (C). ns indicates  $P > 0.05$ . \* $P \leq 0.05$ ; \*\* $P \leq 0.01$ , \*\*\* $P \leq 0.001$ ; \*\*\*\* $P \leq 0.0001$ .  $P$  values were generated using the Mann-Whitney  $U$  test and corrected using the Bonferroni correction.

intervention that MIS-C patients received was uniformly distributed across clinical sites, we found that there was no partiality across sites. This highlights that these associations we observed between severity and protein levels are not driven by differences in clinical interventions between sites (see Table, Supplemental Digital Content 6, <http://links.lww.com/INF/F422>).

### DISCUSSION

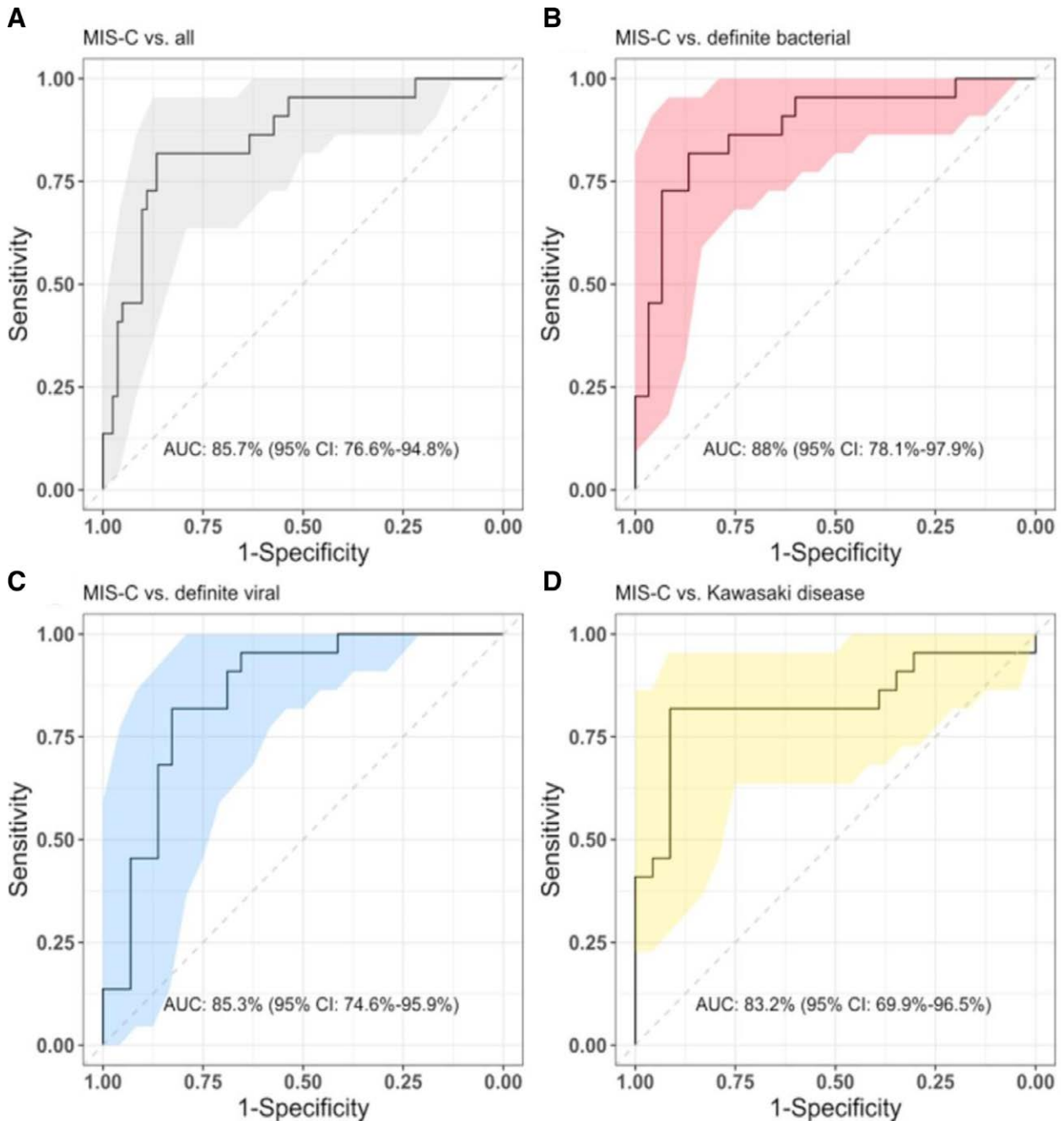
Weeks after SARS-CoV-2 infection, some children developed a hyperinflammatory condition termed MIS-C. The clinical presentation and laboratory findings in MIS-C are like other inflammatory and infectious diseases such as severe bacterial or viral infection and KD, which makes the appropriate diagnosis and treatment of MIS-C challenging.

Here, we evaluated 7 candidate host protein biomarkers in a cohort of 108 children with MIS-C, KD, DB, DV and HC. All MIS-C cases met the WHO case definitions and over half were admitted to PICU. These patients were compared to KD, DB and DV cases recruited before the COVID-19 pandemic. Five of the candidate biomarkers were selected from RNA-Seq and 2 from the literature because of their reported roles in the GI involvement and hyperinflammatory state observed early in the course of MIS-C disease, respectively.<sup>6,17,28</sup>

The results showed that 3 proteins (PCSK9, CD163 and CXCL9) were significantly higher in MIS-C cases when compared with the other comparator groups. More importantly, the performance of PCSK9, CD163 and CXCL9 when combined into a 3-protein signature could distinguish MIS-C patients from our other disease controls with an AUC of 85.7% (95% CI: 76.6%–94.8%). When we included CRP levels into the 3-protein model, we observed an increase in performance for distinguishing MIS-C from KD of 9%. Given the overlap in clinical features between MIS-C and KD, especially in incomplete KD cases, these findings could be clinically useful due to the importance of timely administration of IVIG to patients with suspected KD to prevent coronary artery aneurysm formation.<sup>31</sup> Similarly, we observed an increase in distinguishing MIS-C from DV when including CRP levels into the 3-protein model; however, this finding needs to be further validated in an independent cohort comprised of patients with viral infections that have been phenotyped independent of CRP, as CRP levels were used in the clinical phenotyping of the DV cases in this study (ie,  $<60$  mg/L).

The proteins included in the 3-protein signature may have biologic functions that can provide insight into the pathogenesis of MIS-C. CD163 is a transmembrane macrophage-specific hemoglobin-haptoglobin scavenger receptor that is elevated in MAS and other vasculitic conditions. The biomarker form of this protein is the soluble CD163 (sCD163) found in plasma and produced from increased sCD163 shedding mediated by TNF- $\alpha$ .<sup>32</sup> Increased abundance of sCD163 and marked elevation of macrophage activity have been recognized as markers in several inflammatory diseases.<sup>33</sup> Mostafa and colleagues<sup>34</sup> reported increased levels of sCD163 in children with SAR-CoV-2 infection and MIS-C, compared with HC, which likely reflects the exaggerated proinflammatory host response and suggests a potential therapeutic role for sCD163 antagonists. CD163 levels have also been shown to strongly correlate with the marked neutrophilia observed in MIS-C, suggesting that this is a result of macrophage activation and supporting the observation that the highest levels of this protein are found in the most severe cases of MIS-C.<sup>20,35</sup> CXCL9 is 1 of 3 chemokines that selectively bind to the C-X-C motif chemokine receptor 3 (CXCR3) and its expression is primarily driven by IFN- $\gamma$ .<sup>36</sup> CXCL9 is commonly expressed by peripheral blood mononuclear cells, but more specifically by macrophages, and is best known for its role in the inflammatory response by mediating immune cell migration and activation.<sup>37</sup> CXCL9 and its mediator, IFN- $\gamma$ , have been reported to be more abundant in MIS-C cases than in children with mild and severe COVID, confirming the hyperinflammatory state observed in MIS-C.<sup>17,20,28</sup> Our results support these findings and validate CD163 and CXCL9 as viable biomarkers for the diagnosis of MIS-C when compared to KD or other common bacterial and viral childhood infections.

Higher levels of PCSK9 were observed in MIS-C cases when compared to all other disease comparator groups. PCSK9 is vital in the metabolism of plasma cholesterol by regulating the levels of low-density lipoproteins (LDL) receptors that filter out the cholesterol-rich LDL particles from plasma.<sup>38–40</sup> Increased PCSK9 expression has been linked to lower levels of LDL receptors and consequently higher LDL levels. Cholesterol is essential for SARS-CoV-2 infection as the virus binds to cell surface angiotensin converting enzyme 2 fused to cholesterol, causing a signaling cascade and allowing the lipid-enveloped RNA to enter host cells.<sup>41,42</sup> In systemic inflammatory conditions, disruption of the vascular endothelium can lead to dysregulation of lipid transport and metabolism and an increase in circulating LDL and PCSK9. This explains why



**FIGURE 2.** Receiver operating characteristic (ROC) curves visualizing the performance of the 3-protein signature (PCSK9, CD163 and CXCL9) for A. MIS-C vs. all; B. MIS-C vs. definite bacterial; C. MIS-C vs. definite viral; D. MIS-C vs. Kawasaki disease. Area under the ROC curve (AUC) and 95% CI are shown on the plots.

higher cholesterol levels are associated with higher susceptibility to SARS-CoV-2.<sup>42</sup> While LDL data was not available from the patients in this study, future studies to explore the effect of MIS-C on LDL levels could provide insight into the pathophysiology of MIS-C and further validate our findings. PCSK9 also exhibits a proinflammatory effect by promoting TNF- $\alpha$  expression while suppressing the anti-inflammatory markers ARG1 and IL-10.<sup>43</sup> The beneficial effect of using PCSK9 inhibitors in adults with severe COVID-19 has been demonstrated<sup>44-46</sup>; however, elevated levels of this protein in MIS-C cases have not, to our knowledge, been previously reported.

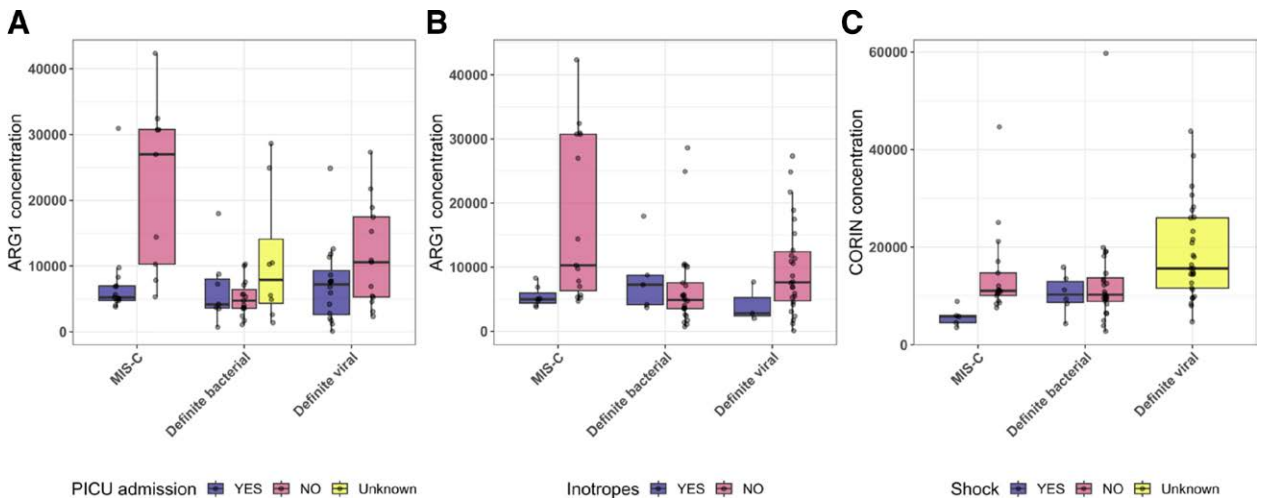
ARG1 was not found to be significantly different between our MIS-C cases and other comparator groups; however, lower levels of this protein were associated with cases of MIS-C requiring PICU admission and inotropes. ARG1 is the final enzyme involved in the urea cycle, hydrolyzing arginine to urea, and as such, is highly expressed in the liver.<sup>47,48</sup> It also plays an important role in the immune response where it is released extracellularly under inflammatory conditions to inhibit inflammatory damage and immunity toward intracellular pathogens by reducing T-cell proliferation and cytokine production.<sup>49-51</sup> ARG1 dysregulation has



**TABLE 2.** Bonferroni-adjusted *P* Values Showing the Association Between Clinical Variables and Each of the Proteins Measured in MIS-C Patients

Proteins	PCSK9	CD163	CXCL9	ARG1	CORIN	CCL20	ADAMTS2
PICU admission	1.000	1.000	1.000	<b>0.014</b>	0.212	1.000	1.000
Oxygen requirement	0.609	0.482	1.000	0.609	0.282	1.000	1.000
Inotrope requirement	0.096	0.389	0.638	<b>0.027</b>	1.000	1.000	1.000
Noninvasive ventilation requirement	1.000	1.000	1.000	1.000	1.000	1.000	1.000
Cardiac involvement	0.432	0.874	1.000	1.000	1.000	1.000	1.000
GI involvement	0.705	1.000	1.000	1.000	1.000	1.000	1.000
Rash	1.000	1.000	1.000	1.000	0.136	1.000	0.764
Shock	1.000	1.000	1.000	0.908	<b>4.8 × 10<sup>-3</sup></b>	1.000	1.000
Conjunctivitis	0.860	1.000	1.000	1.000	1.000	0.651	1.000
Days of symptoms	1.000	1.000	1.000	1.000	1.000	1.000	1.000
CRP levels	0.678	0.437	0.437	0.678	0.437	0.229	0.698
WBC levels	1.000	1.000	0.942	1.000	1.000	1.000	1.000
Neutrophil levels	1.000	1.000	0.937	1.000	1.000	1.000	1.000
Lymphocytes	1.000	1.000	1.000	1.000	0.207	1.000	1.000
Monocytes	1.000	1.000	1.000	1.000	0.980	1.000	1.000
Platelets	1.000	1.000	1.000	1.000	0.157	1.000	1.000

Associations between protein levels and binary categorical variables including PICU admission, oxygen requirement, noninvasive ventilation requirement, inotrope requirement, cardiac involvement, GI involvement, rash and conjunctivitis were tested using the Mann-Whitney *U* test. The association between protein levels and continuous variables including body mass index, days of symptoms, CRP, WBC, neutrophil, lymphocytes, monocytes and platelet levels were tested using linear regression models. Bonferroni-adjusted *P* values <0.05 are in bold. *P* values are adjusted for each clinical/laboratory variable.



**FIGURE 3.** Levels of ARG1 and CORIN among patients stratified according to whether they were admitted to PICU (A), required inotropes (B) or presented with shock (C).

become synonymous with various pathologic processes involving cardiovascular, immunologic, neurodegenerative and tumorigenic disorders.<sup>52</sup> Elevated levels of ARG1 have been reported in COVID-19 cases with high viral loads<sup>51,53</sup> so it is possible that the high levels of PCSK9 observed in MIS-C cases are suppressing ARG1.

Lower levels of CORIN were also associated with severe MIS-C cases with shock. CORIN converts pro-atrial natriuretic peptide (pro-ANP) to biologically active ANP, a cardiac hormone that regulates blood volume and pressure by reducing plasma volume by renal excretion of salt and water, vasodilation and increased vascular permeability.<sup>54</sup> Higher pro-ANP levels, which could result from lower levels of CORIN, are associated with poor survival prognosis in children and adults with severe sepsis and septic shock.<sup>55,56</sup> The lower levels of CORIN we observed could therefore result in higher levels of pro-ANP and lower levels of ANP, which could contribute to the hypertension, inflammation and cardiac manifestations associated with severity and shock in MIS-C.

Future studies to measure the ratio of pro-ANP to ANP levels in MIS-C could provide insight into the disease mechanisms and help in validating our findings. While the best performing diagnostic biomarkers (PCSK9, CD163 and CXCL9) were significantly elevated in MIS-C patients, they were not found to be associated with severity of MIS-C. This could reflect the wide spectrum of mild to severe cases in our cohort.

We did not observe significant differences in the levels of ADAMTS2 or CCL20 in the MIS-C cases when compared to our other disease group. ADAMTS2, a biomarker we selected from RNA data, is a metalloprotease that processes procollagen to provide strength and support to many body tissues. Subsequent to our screening of RNA-Seq data, 2 other groups have reported increased gene expression of ADAMTS2 in COVID-19 and MIS-C cases; however, these groups were compared to HC rather than other disease groups.<sup>57,58</sup> Similarly, Gruber et al<sup>6</sup> reported an increased abundance of CCL20 in patients with MIS-C. Our inability to replicate their results could be due to the difference in the control groups



that were used: KD, DB and DV as compared to nonintensive care unit COVID-19-infected children, young adults, adults and convalescent adults.

Although our study provides useful information on potential protein biomarkers for MIS-C, there are several limitations that should be taken into consideration. First, our sample size for MIS-C ( $n = 22$ ) was restricted by the number of children that had been recruited at the time of this study that met all WHO criteria. Second, these patients were recruited during the period of April 2020–August 2021 and, due to the variants that were circulating during this period, would not include the Omicron variant that was first detected in November 2021. Further investigation of the biomarkers we present in this study is required in a larger independent cohort that includes other relevant DB and DV groups with overlapping clinical features of MIS-C including TSS, MAS and hemophagocytic lymphohistiocytosis. Furthermore, our MIS-C cases were older than our other disease comparator groups and the performance of our signature should be tested in younger children with MIS-C. A limitation of all diagnostic studies comparing MIS-C and KD is the lack of a diagnostic test for either disease; however, we included KD patients that were recruited pre-pandemic to avoid errors in phenotyping. None of the KD patients in this study required inotropes and were, therefore, less severe than the MIS-C, DB and DV groups. The severity associations that we observed for ARG1 and CORIN require further validation in more severe KD cases or KD shock to confirm if this finding is unique to MIS-C.

Finally, this study reports the first protein-based diagnostic signature to discriminate MIS-C from KD and other common bacterial and viral infections. Our results show that the increase in specific proteins involved in macrophage activation, endothelial dysfunction and lipid metabolism can discriminate MIS-C from other inflammatory diseases in children. We further explored the associations between plasma levels and clinical outcomes to find both ARG1 and CORIN levels are lower in severe MIS-C. Once validated, our results could form the foundation for the development of a point-of-care diagnostic test that could assist pediatricians to diagnose and determine the best course of treatment for MIS-C.

## ACKNOWLEDGMENTS

We are grateful to all patients and families that contributed toward this study. We would like to thank the UK KD Genetic consortium, the PERFORM and DIAMONDS consortia for their contributions to obtaining funding, patient recruitment, clinical data collection and entry, assignment of patient phenotypes and processing and storage of research samples used in this analysis (see all Consortia members in Study Group, Supplemental Digital Content 7, <http://links.lww.com/INF/F423>). We acknowledge our clinical collaborators across the UK who, with support from the UK NIHR Clinical Research Network, rapidly established recruitment of children under difficult circumstances during the COVID-19 pandemic, including the MIS-C patients reported in this article.

## REFERENCES

- Ludvigsson JF. Systematic review of COVID-19 in children shows milder cases and a better prognosis than adults. *Acta Paediatr.* 2020;109:1088–1095.
- Diorio C, Henrickson SE, Vella LA, et al. Multisystem inflammatory syndrome in children and COVID-19 are distinct presentations of SARS-CoV-2. *J Clin Invest.* 2020;130:5967–5975.
- Flood J, Shingleton J, Bennett E, et al. Paediatric multisystem inflammatory syndrome temporally associated with SARS-CoV-2 (PIMS-TS): prospective, national surveillance, United Kingdom and Ireland, 2020. *Lancet Reg Health Eur.* 2021;3:100075.
- Whittaker E, Bamford A, Kenny J, et al; PIMS-TS Study Group and EUCLIDS and PERFORM Consortia. Clinical characteristics of 58 children

with a pediatric inflammatory multisystem syndrome temporally associated with SARS-CoV-2. *JAMA.* 2020;324:259–269.

- Feldstein LR, Rose EB, Horwitz SM, et al; Overcoming COVID-19 Investigators. Multisystem inflammatory syndrome in U.S. children and adolescents. *N Engl J Med.* 2020;383:334–346.
- Gruber CN, Patel RS, Trachtman R, et al. Mapping systemic inflammation and antibody responses in multisystem inflammatory syndrome in children (MIS-C). *Cell.* 2020;183:982–995.e14.
- Sharma C, Ganigara M, Galeotti C, et al. Multisystem inflammatory syndrome in children and Kawasaki disease: a critical comparison. *Nat Rev Rheumatol.* 2021;17:731–748.
- Roarty C, Waterfield T. Review and future directions for PIMS-TS (MIS-C). *Arch Dis Child.* 2023;108:e2.
- AAP. *Current AAP MIS-C symptoms.* 2023. Available from: <https://www.aap.org/en/pages/2019-novel-coronavirus-covid-19-infections/clinical-guidance/multisystem-inflammatory-syndrome-in-children-mis-c-interim-guidance/>. Accessed June 22, 2023.
- Ramphul K, Mejias SG. Kawasaki disease: a comprehensive review. *Arch Med Sci Atheroscler Dis.* 2018;3:41–45.
- Kim GB. Reality of Kawasaki disease epidemiology. *Korean J Pediatr.* 2019;62:292–296.
- Newburger JW, Takahashi M, Burns JC, et al. The treatment of Kawasaki syndrome with intravenous gamma globulin. *N Engl J Med.* 1986;315:341–347.
- Henderson LA, Canna SW, Friedman KG, et al. American College of Rheumatology Clinical Guidance for multisystem inflammatory syndrome in children associated with SARS-CoV-2 and hyperinflammation in pediatric COVID-19: Version 2. *Arthritis Rheumatol.* 2021;73:e13–e29.
- McArdle AJ, Vito O, Patel H, et al; BATS Consortium. Treatment of multisystem inflammatory syndrome in children. *N Engl J Med.* 2021;385:11–22.
- Channon-Wells S, Vito O, McArdle AJ, et al; Best Available Treatment Study (BATS) consortium. Immunoglobulin, glucocorticoid, or combination therapy for multisystem inflammatory syndrome in children: a propensity-weighted cohort study. *Lancet Rheumatol.* 2023;5:e184–e199.
- Papan C, Argentiero A, Porwoll M, et al. A host signature based on TRAIL, IP-10, and CRP for reducing antibiotic overuse in children by differentiating bacterial from viral infections: a prospective, multicentre cohort study. *Clin Microbiol Infect.* 2022;28:723–730.
- Sacco K, Castagnoli R, Vakkilainen S, et al; NIAID Immune Response to COVID Group. Immunopathological signatures in multisystem inflammatory syndrome in children and pediatric COVID-19. *Nat Med.* 2022;28:1050–1062.
- Consiglio CR, Cotugno N, Sardh F, et al; CACTUS Study Team. The immunology of multisystem inflammatory syndrome in children with COVID-19. *Cell.* 2020;183:968–981.e7.
- Yonker LM, Gilboa T, Ogata AF, et al. Multisystem inflammatory syndrome in children is driven by zonulin-dependent loss of gut mucosal barrier. *J Clin Invest.* 2021;131:e149633.
- Diorio C, Shraim R, Vella LA, et al. Proteomic profiling of MIS-C patients indicates heterogeneity relating to interferon gamma dysregulation and vascular endothelial dysfunction. *Nat Commun.* 2021;12:7222.
- Multisystem inflammatory syndrome in children and adolescents with COVID-19: scientific brief. May 15, 2020. Available from: <https://www.who.int/publications/i/item/multisystem-inflammatory-syndrome-in-children-and-adolescents-with-covid-19>. Accessed June 26, 2023.
- Herberg JA, Kaforou M, Wright VJ, et al; IRIS Consortium. Diagnostic test accuracy of a 2-transcript host RNA signature for discriminating bacterial vs viral infection in febrile children. *JAMA.* 2016;316:835–845.
- Martinón-Torres F, Salas A, Rivero-Calle I, et al; EUCLIDS Consortium. Life-threatening infections in children in Europe (the EUCLIDS Project): a prospective cohort study. *Lancet Child Adolesc Health.* 2018;2:404–414.
- Nijman RG, Oostenbrink R, Moll HA, et al; PERFORM consortium (Personalized Risk assessment in febrile children to optimize Real-life Management across the European Union). A novel framework for phenotyping children with suspected or confirmed infection for future biomarker studies. *Front Pediatr.* 2021;9:688272.
- Jackson HR, Miglietta L, Habgood-Coote D, et al. Diagnosis of multisystem inflammatory syndrome in children by a whole-blood transcriptional signature. *J Pediatric Infect Dis Soc.* 2023;12:322–331.
- Love MI, Huber W, Anders S. Moderated estimation of fold change and dispersion for RNA-Seq data with DESeq2. *Genome Biol.* 2014;15:550–571.

27. Benjamini Y, Hochberg Y. Controlling the false discovery rate: a practical and powerful approach to multiple testing. *J R Stat Soc Series B Stat Methodol.* 1995;57:289–300.
28. Caldarale F, Giacomelli M, Garrafa E, et al. Plasmacytoid dendritic cells depletion and elevation of IFN- $\gamma$  dependent chemokines CXCL9 and CXCL10 in children with multisystem inflammatory syndrome. *Front Immunol.* 2021;12:654587.
29. R Core Team. *R: A Language and Environment for Statistical Computing.* R Foundation for Statistical Computing; 2016.
30. Escadafal C, Incardona S, Fernandez-Carballo BL, et al. The good and the bad: using C reactive protein to distinguish bacterial from non-bacterial infection among febrile patients in low-resource settings. *BMJ Glob Health.* 2020;5:e002396.
31. Godfred-Cato S, Bryant B, Leung J, et al; California MIS-C Response Team. COVID-19-associated multisystem inflammatory syndrome in children — United States, March–July 2020 [published correction appears in MMWR Morb Mortal Wkly Rep. 2020;69(35):1229]. *MMWR Morb Mortal Wkly Rep.* 2020;69:1074–1080.
32. Etzerodt A, Berg RMG, Plovsing RR, et al. Soluble ectodomain CD163 and extracellular vesicle-associated CD163 are two differently regulated forms of ‘soluble CD163’ in plasma. *Sci Rep.* 2017;7:40286.
33. Kowal K, Silver R, Stawińska E, et al. CD163 and its role in inflammation. *Folia Histochem Cytobiol.* 2011;49:365–374.
34. Mostafa GA, Ibrahim HM, Al Sayed Shehab A, et al. Up-regulated serum levels of soluble CD25 and soluble CD163 in pediatric patients with SARS-CoV-2. *Eur J Pediatr.* 2022;181:2299–2309.
35. Porritt RA, Binck A, Paschold L, et al. The autoimmune signature of hyper-inflammatory multisystem inflammatory syndrome in children. *J Clin Invest.* 2021;131:e151520.
36. Müller M, Carter S, Hofer MJ, et al. Review: the chemokine receptor CXCR3 and its ligands CXCL9, CXCL10 and CXCL11 in neuroimmunity - a tale of conflict and conundrum. *Neuropathol Appl Neurobiol.* 2010;36:368–387.
37. Metzemaekers M, Vanheule V, Janssens R, et al. Overview of the mechanisms that may contribute to the non-redundant activities of interferon-inducible CXC chemokine receptor 3 ligands. *Front Immunol.* 2018;8:1970.
38. Maxwell KN, Breslow JL. Adenoviral-mediated expression of Pcsk9 in mice results in a low-density lipoprotein receptor knockout phenotype. *Proc Natl Acad Sci U S A.* 2004;101:7100–7105.
39. Shapiro MD, Tavori H, Fazio S. PCSK9: from basic science discoveries to clinical trials. *Circ Res.* 2018;122:1420–1438.
40. Peterson AS, Fong LG, Young SG. PCSK9 function and physiology. *J Lipid Res.* 2008;49:1152–1156.
41. Wang H, Yuan Z, Pavel MA, et al. The role of high cholesterol in age-related COVID-19 lethality. *bioRxiv.* 2021.
42. Cure E, Cumhur Cure M. Strong relationship between cholesterol, low-density lipoprotein receptor, Na<sup>+</sup>/H<sup>+</sup> exchanger, and SARS-COV-2: this association may be the cause of death in the patient with COVID-19. *Lipids Health Dis.* 2021;20:179.
43. Kubica J, Podhajski P, Magielski P, et al. IMPACT of PCSK9 inhibition on clinical outcome in patients during the inflammatory stage of the SARS-COV-2 infection: rationale and protocol of the IMPACT-SIRIO 5 study. *Cardiol J.* 2022;29:140–147.
44. Huang W, Xiao J, Ji J, et al. Association of lipid-lowering drugs with COVID-19 outcomes from a Mendelian randomization study. *Elife.* 2021;10:e73873.
45. Vuorio A, Kovanen PT. PCSK9 inhibitors for COVID-19: an opportunity to enhance the antiviral action of interferon in patients with hypercholesterolaemia. *J Intern Med.* 2021;289:749–751.
46. Navarese EP, Podhajski P, Gurbel PA, et al. PCSK9 inhibition during the inflammatory stage of SARS-CoV-2 infection. *J Am Coll Cardiol.* 2023;81:224–234.
47. Iyer R, Jenkinson CP, Vockley JG, et al. The human arginases and arginase deficiency. *J Inherit Metab Dis.* 1998;21:86–100.
48. Caldwell RW, Rodriguez PC, Toque HA, et al. Arginase: a multifaceted enzyme important in health and disease. *Physiol Rev.* 2018;98:641–665.
49. Munder M. Arginase: an emerging key player in the mammalian immune system. *Br J Pharmacol.* 2009;158:638–651.
50. Viola A, Munari F, Sánchez-Rodríguez R, et al. The metabolic signature of macrophage responses. *Front Immunol.* 2019;10:1462.
51. Derakhshani A, Hemmat N, Asadzadeh Z, et al. Arginase 1 (Arg1) as an up-regulated gene in COVID-19 patients: a promising marker in COVID-19 immunopathy. *J Clin Med.* 2021;10:1051.
52. S. Clemente G, van Waarde A, F. Antunes I, et al. Arginase as a potential biomarker of disease progression: a molecular imaging perspective. *Int J Mol Sci.* 2020;21:5291.
53. Hemmat N, Derakhshani A, Bannazadeh Baghi H, et al. Neutrophils, crucial, or harmful immune cells involved in coronavirus infection: a bioinformatics study. *Front Genet.* 2020;11:641.
54. Yan W, Wu F, Morser J, et al. Corin, a transmembrane cardiac serine protease, acts as a pro-atrial natriuretic peptide-converting enzyme. *Proc Natl Acad Sci U S A.* 2000;97:8525–8529.
55. Lipinska-Gediga M, Mierczala M, Durek G. Pro-atrial natriuretic peptide (pro-ANP) level in patients with severe sepsis and septic shock: prognostic and diagnostic significance. *Infection.* 2012;40:303–309.
56. Setyaningtyas A, Soetjpto S, Endaryanto A, et al. The correlations of human atrial natriuretic peptide on cardiac function and hemodynamics in pediatric septic shock. *Open Access Emerg Med.* 2022;14:525–534.
57. Zhang Y, Wang S, Xia H, et al. Identification of monocytes associated with severe COVID-19 in the PBMCs of severely infected patients through single-cell transcriptome sequencing. *Engineering.* 2022;17:161–169.
58. Loy CJ, Sotomayor-Gonzalez A, Servellita V, et al. Nucleic acid biomarkers of immune response and cell and tissue damage in children with COVID-19 and MIS-C. *Cell Rep Med.* 2023;4:101034.