

# Arrhythmic risk stratification in arrhythmogenic right ventricular cardiomyopathy

Alessio Gasperetti <sup>1,2,3\*</sup>, Cynthia A. James <sup>1</sup>, Richard T. Carrick <sup>1</sup>,  
Alexandros Protonotarios <sup>4</sup>, Anneline S.J.M. te Riele <sup>3†</sup>,  
Julia Cadrin-Tourigny <sup>5</sup>, Paolo Compagnucci <sup>6</sup>, Firat Duru <sup>7</sup>,  
Peter van Tintelen <sup>2†</sup>, Perry M. Elliot <sup>4</sup>, and Hugh Calkins <sup>1\*</sup>

<sup>1</sup>Division of Cardiology, Department of Medicine, Johns Hopkins University, Blalock 545, 600 N. Wolfe St., Baltimore, MD 21287, USA; <sup>2</sup>Department of Genetics, University Medical Center Utrecht, University of Utrecht, Heidelberglaan 100, Utrecht, The Netherlands; <sup>3</sup>Department of Medicine, Division of Cardiology, University Medical Center Utrecht, Utrecht University, Heidelberglaan 100, Utrecht, Utrecht, The Netherlands; <sup>4</sup>Department of Cardiology, UCL Institute of Cardiovascular Science, London, UK; <sup>5</sup>Cardiovascular Genetics Center, Montreal Heart Institute, Université de Montréal, Montréal, QC, Canada; <sup>6</sup>Cardiology and Arrhythmology Clinic, Marche University Hospital, Ancona, Italy; and <sup>7</sup>Department of Cardiology, Arrhythmia Unit, University Heart Center, University Hospital Zurich, Zurich, Switzerland

Received 6 May 2023; accepted after revision 19 October 2023; online publish-ahead-of-print 3 November 2023

## Abstract

Arrhythmogenic right ventricular cardiomyopathy (ARVC) is a heritable cardiomyopathy characterized by a predominantly arrhythmic presentation. It represents the leading cause of sudden cardiac death (SCD) among athletes and poses a significant morbidity threat in the general population. As a causative treatment for ARVC is still not available, the placement of an implantable cardioverter defibrillator represents the current cornerstone for SCD prevention in this setting. Thanks to international ARVC-dedicated efforts, significant steps have been achieved in recent years towards an individualized, patient-centred risk stratification approach. A novel risk calculator algorithm estimating the 5-year risk of arrhythmias of patients with ARVC has been introduced in clinical practice and subsequently validated. The purpose of this article is to summarize the body of evidence that has allowed the development of this tool and to discuss the best way to implement its use in the care of an individual patient.

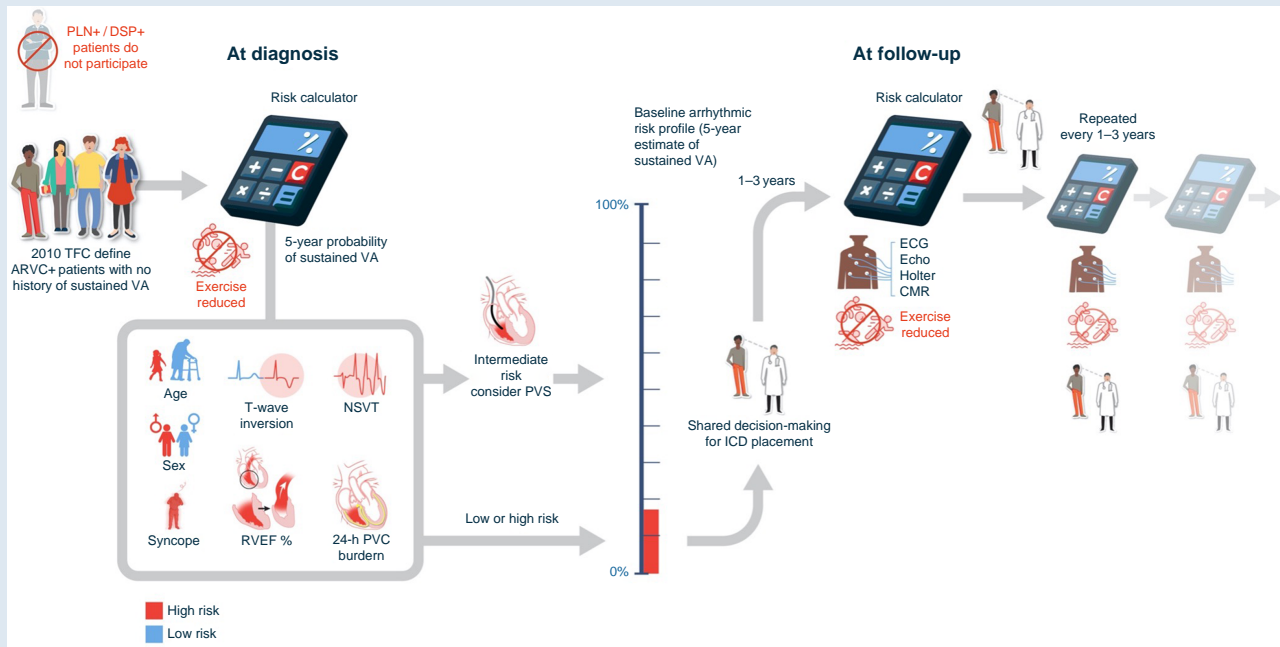
\* Corresponding authors. Tel: 667-2127958, E-mail address: hcalkins@jhmi.edu (H.C.); alessio.gasperetti93@gmail.com (A.G.)

† Member of the European Reference Network for rare, low prevalence and complex diseases of the heart: ERN GUARD-Heart (ERN GUARDHEART; <http://guardheart.ern-net.eu>).

© The Author(s) 2023. Published by Oxford University Press on behalf of the European Society of Cardiology.

This is an Open Access article distributed under the terms of the Creative Commons Attribution License (<https://creativecommons.org/licenses/by/4.0/>), which permits unrestricted reuse, distribution, and reproduction in any medium, provided the original work is properly cited.

## Graphical Abstract



## Keywords

Arrhythmic right ventricular cardiomyopathy • Risk stratification • Primary Prevention • ICD

## Introduction

Arrhythmic right ventricular cardiomyopathy (ARVC) is a heritable cardiomyopathy characterized by a predominantly arrhythmic presentation out of proportion to the underlying structural disease and with the histological hallmark of scarring and/or fibro-fatty infiltration of the ventricular myocardium.<sup>1-4</sup> Arrhythmic right ventricular cardiomyopathy is the most studied and best-characterized disease within the phenotypic spectrum of arrhythmic cardiomyopathy (ACM), and numerous different underlying genes have been identified, which, in the presence of disease-causing variants, lead to the development of ARVC, as summarized in *Table 1*. Regardless of the underlying genetic basis, all forms of ARVC are associated with an increased risk of sustained ventricular arrhythmias (VAs) and sudden cardiac death (SCD).<sup>8</sup> It is notable that ARVC is 10 times less common than hypertrophic cardiomyopathy but results in a higher proportion of unexplained cardiac deaths in autopsy series, and it is one of the most common causes of SCD among athletes.<sup>1,2,9,10</sup>

Once a diagnosis of ARVC is established,<sup>11</sup> the next step in management is to assess an individual's risk of VA/SCD and determine whether the placement of an implantable cardioverter defibrillator (ICD) is recommended, especially when dealing with patients without previous VA events (the so-called primary prevention ARVC patients).<sup>12</sup> The purpose of this review article is to summarize the large body of evidence that has allowed the development of modern tools for risk stratification in patients with ARVC and the best way to implement its use in the care of an individual patient.

## Patient management and arrhythmic risk stratification

The cornerstone of SCD prevention in patients with ARVC is the placement of an ICD.<sup>13</sup> However, in a young and active population such as

the one affected by ARVC, the potential absolute risk of SCD reduction achieved with ICDs should be carefully weighed against the risk of device-related complications. Multiple studies have shown that both transvenous and subcutaneous ICDs are associated with complications,<sup>14-17</sup> with a meta-analysis showing a potential 3.9% pooled risk annual rate of inappropriate shocks and a 4.2% annual rate of other complications, such as infection or lead malfunction for young patients implanted with an ICD for the management of familial cardiomyopathies.<sup>18</sup> Performing an accurate risk-benefit analysis of ICD implantations in patients with ARVC is therefore a critical part of the integrative management of these patients.

## Known predictors and current guidelines

Numerous studies have reported associations between demographic, clinical, and genetic characteristics and the development of sustained VAs in patients with ARVC (*Table 2*). These include young age and male sex, and it has been speculated that this results from the pro-arrhythmic effects of testosterone and other sex hormones.<sup>42,43</sup> Findings from 12-lead electrocardiograms (ECGs) (i.e. number of T-wave inversions (TWIs) and QRS complex fractionation), 24-h ambulatory ECG monitoring [i.e. premature ventricular contraction (PVC) burden, PVC spikes, and non-sustained ventricular tachycardia (NSVT)], and cardiac imaging [i.e. right ventricular (RV) and left ventricular (LV) dysfunction] have also been identified as important predictors of arrhythmic risk.<sup>6,20,30,31,34,35,38,41,44-47</sup> Additionally, the results of invasive electrophysiological tests including inducibility of VT during programmed ventricular stimulation (PVS) or the presence of low voltage areas or areas of fractionated potentials on electro-anatomical mapping may have predictive value in some ARVC cohorts.<sup>33,36,37</sup> By combining these risk markers and the presence of previous sustained arrhythmic events, the 2015 International Task Force (ITFC) consensus for the treatment of ARVC, the 2017 American College of Cardiology (ACC)/American Heart Association (AHA)/Heart Rhythm Society (HRS) guidelines for management of patients with VAs, the 2019

**Table 1** Genes associated with ARVC<sup>5</sup>

	Localization	Inheritance	Phenotype	Peculiarities	Dedicated risk stratification?
Plakophilin 2 ( <i>PKP2</i> )	Desmosome	AD	Right dominant	Highest susceptibility to exercise	No but prototype for ARVC risk calculator <sup>6</sup>
Desmoplakin ( <i>DSP</i> )	Desmosome	AD/AR	Biventricular or left ventricular	Hair and skin features Myocarditis-like episodes	No
Desmoglein 2 ( <i>DSG2</i> )	Desmosome	AD/AR	Biventricular		No
Desmocollin 2 ( <i>DSC2</i> )	Desmosome	AD/AR	Right dominant		No
Junction plakoglobin ( <i>JUP</i> )	Desmosome	AR	Right dominant or biventricular	Hair and skin features Naxos disease	No
Desmin ( <i>DES</i> )	Intermediate filament	AD	Right dominant	AV conduction disorders Skeletal myopathies possible	No
Transmembrane protein 43 ( <i>TMEM43</i> )	Nuclear envelope	AD	Biventricular or left ventricular	High risk of VA Male	No
Phospholamban ( <i>PLN</i> )	Calcium handling	AD	Biventricular or left ventricular		Yes <sup>7</sup>

HRS consensus document on ACM, and the 2022 European Society of Cardiology (ESC) guidelines for the management of patients with VAs have provided expert recommendations on how to risk stratify for ICD placement in patients with ARVC<sup>13,48–50</sup> (Figure 1). These guidelines have subsequently been compared by Bosman *et al.*<sup>51</sup> Regardless, all above-mentioned guideline recommendations were based on expert opinion, only provided crude estimates of risk (e.g. <1%/year or 1–10%/year), and did not take into account potentially correlated risk factors. A more personalized and direct approach to risk assessment was therefore desired.

## The arrhythmogenic right ventricular cardiomyopathy risk calculator

While there is consensus about the benefits of ICDs in patients with ARVC who have experienced previous episodes of sustained VAs,<sup>13,48,49</sup> the indications for primary prevention ICD placement in patients with ARVC and no such history remain controversial as many studies have reported poor performance of the existing approach among patients without previous VA, with a high number of ICD implanted per sustained VA treated.<sup>6,20,51</sup>

To better inform medical providers and patients when making the decision on whether to implant an ICD for primary prevention, a risk stratification tool that generates individualized estimates was proposed by a multinational collaboration in 2019.<sup>6</sup> This tool, called the ARVC risk calculator, employs seven clinical variables [age, sex, number of leads with a negative T wave in a 12-lead ECG, 24-h PVC burden, NSVT, history of a recent (<6 months) cardiac syncope episode, and RV ejection fraction (RVEF)% from cardiac magnetic resonance] in a model that provides 5-year risk estimates for a composite outcome of sustained VTs, ventricular fibrillation/flutter, SCD, and appropriate ICD therapies. It was developed from a multicentre cohort of 528 patients from six countries who fulfilled definite 2010 Task Force Criteria for ARVC and showed a good internal reliability with a bootstrapped *C* statistic of 0.77 (0.73–0.81). A subsequent study from the same collaboration modified the risk calculator to include an estimation for the risk of rapid VA events (>250 b.p.m.).<sup>21</sup> The clinical variables used in this calculator are derived from clinical tests recommended by available guidelines and are routinely

collected in most ARVC/cardiomyopathy clinics. This makes the ARVC risk calculator easy to implement into clinical workflow.<sup>13,52</sup> Additionally, its integrative approach results in a single numerical output that could be used for informed decision-making conversations between patients and healthcare providers. Finally, the analyses have demonstrated that ARVC risk tool risk performs better than the 2015 TFC consensus recommendations for ICD placement. Specifically, the ARVC risk calculator approach resulted in the same protection from VAs but with the advantage of a 20.3% reduction in the number of ICDs.

## Validation of the arrhythmogenic right ventricular cardiomyopathy risk tool

Multiple independent study groups have tested the performance of the ARVC risk calculator in cohorts of patients with ARVC in Europe and Asia. These include two cohorts of 88 primary prevention<sup>32</sup> and 140 mixed primary and secondary prevention ARVC patients from Italy,<sup>41</sup> one study from France (115 primary prevention ARVC patients)<sup>53</sup> and another from China (88 mixed primary and secondary prevention ARVC patients).<sup>54</sup> All reported similar results, showing high discriminatory performance for VA of the risk calculator in those in whom the ARVC calculator was originally developed. These studies were, however, hampered by a relatively low sample size, but, in 2022, two larger independent studies were simultaneously published.<sup>26,55</sup> Jordà *et al.*<sup>55</sup> corroborated the effectiveness and reliability of the ARVC risk calculator, reporting good discrimination [*C* statistic: 0.70 (0.65–0.75)] in a large, multicentre cohort composed of 429 ARVC patients enrolled from 29 centres in North America and Europe. The findings derived from a cohort of 554 ARVC patients led Protonotarios *et al.*<sup>26</sup> to similar conclusions [overall *C* statistic: 0.75 (0.70–0.81)]. However, this second study reported limited calibration of the model with risk overestimation across all risk strata. Furthermore, overall performance was variable between genotypes, with the best fit found with carriers of *PKP-2* disease-causing variants and more limited performance in the gene-elusive population. The most recent ESC guidelines for the management of cardiomyopathies have now endorsed the use of the ARVC risk calculator.<sup>56</sup> Table 3 lists all studies of the ARVC risk calculator including its derivation, external validation, and refinement that have been currently published.

**Table 2** Predictors at baseline of sustained ventricular arrhythmic events (modified and integrated from Krahn et al.<sup>19</sup>)

First author/year	N of patients	Predictor	OR/HR
<b>Age</b>			
Orgeron (2017) <sup>20</sup>	312	Age < 30	3.14
Cadrin-Tourigny (2019) <sup>6</sup>	528	Age (1-year increase)	0.98
Cadrin-Tourigny (2021) <sup>21</sup>	864	Age (1-year increase)	0.96
Carrick (2022) <sup>22</sup>	408	Age (1-year increase)	0.978
<b>Sex</b>			
Mazzanti (2016) <sup>23</sup>	301	Male	2.49
Martin (2016) <sup>24</sup>	26	Male	1.60
Lin (2017) <sup>25</sup>	70	Male	2.41
Cadrin-Tourigny (2019) <sup>6</sup>	528	Male	1.63
Cadrin-Tourigny (2021) <sup>21</sup>	864	Male	1.99
Carrick (2022) <sup>22</sup>	408	Male	1.746
Protonotarios (2022) <sup>26</sup>	554	Male	1.734
<b>Exercise</b>			
Mazzanti (2016) <sup>23</sup>	301	Exercise	2.98
Bosman (2022) <sup>27</sup>	178	Exercise > 30 METh/week	3.00
<b>Cardiac syncope</b>			
Corrado (2010) <sup>28</sup>	106	Syncope	2.94
Battipaglia (2012) <sup>29</sup>	30	Unexplained syncope	16.1
Mazzanti (2016) <sup>23</sup>	301	Syncope	3.36
Cadrin-Tourigny (2019) <sup>6</sup>	528	Cardiac syncope < 6 m.o.	1.93
Carrick (2022) <sup>22</sup>	408	Cardiac syncope < 6 m.o.	1.554
Protonotarios (2022) <sup>26</sup>	554	Cardiac syncope < 6 m.o.	2.672
<b>QRS</b>			
Canpolat (2013) <sup>30</sup>	78	QRS interval fractionation	6.52
<b>T-wave inversion</b>			
Cadrin-Tourigny (2019) <sup>6</sup>	528	<i>n</i> of leads with TWI	1.12
Cadrin-Tourigny (2021) <sup>21</sup>	864	<i>n</i> of leads with TWI	1.12
Carrick (2022) <sup>22</sup>	408	<i>n</i> of leads with TWI	1.10
Protonotarios (2022) <sup>26</sup>	554	<i>n</i> of leads with TWI	1.36
<b>PVS</b>			
Bhonsale (2011) <sup>31</sup>	84	PVS inducibility	4.50
Orgeron (2017) <sup>20</sup>	312	PVS inducibility	2.28
Casella (2020) <sup>32</sup>	101	PVS inducibility	8.9
Gasperetti (2022) <sup>33</sup>	288	PVS inducibility	2.52
<b>Non-sustained VT</b>			
Bhonsale (2011) <sup>31</sup>	84	Non-sustained VT	10.50
Cappelletto (2018) <sup>34</sup>	98	Non-sustained VT	3.28
Cadrin-Tourigny (2019) <sup>6</sup>	528	Non-sustained VT	2.25
Gasperetti (2022) <sup>35</sup>	169	Non-sustained VT	2.29
Carrick (2022) <sup>22</sup>	408	Non-sustained VT	2.126
Protonotarios (2022) <sup>26</sup>	554	Non-sustained VT	1.36
<b>EAM derived</b>			
Santangeli (2012) <sup>36</sup>	32	Fragmented potentials	21.22
Migliore (2013) <sup>37</sup>	69	Low voltage areas	1.70
Lin (2017) <sup>25</sup>	70	Low potential areas	1.07
Casella (2020) <sup>32</sup>	101	Late fragmented potentials	7.4

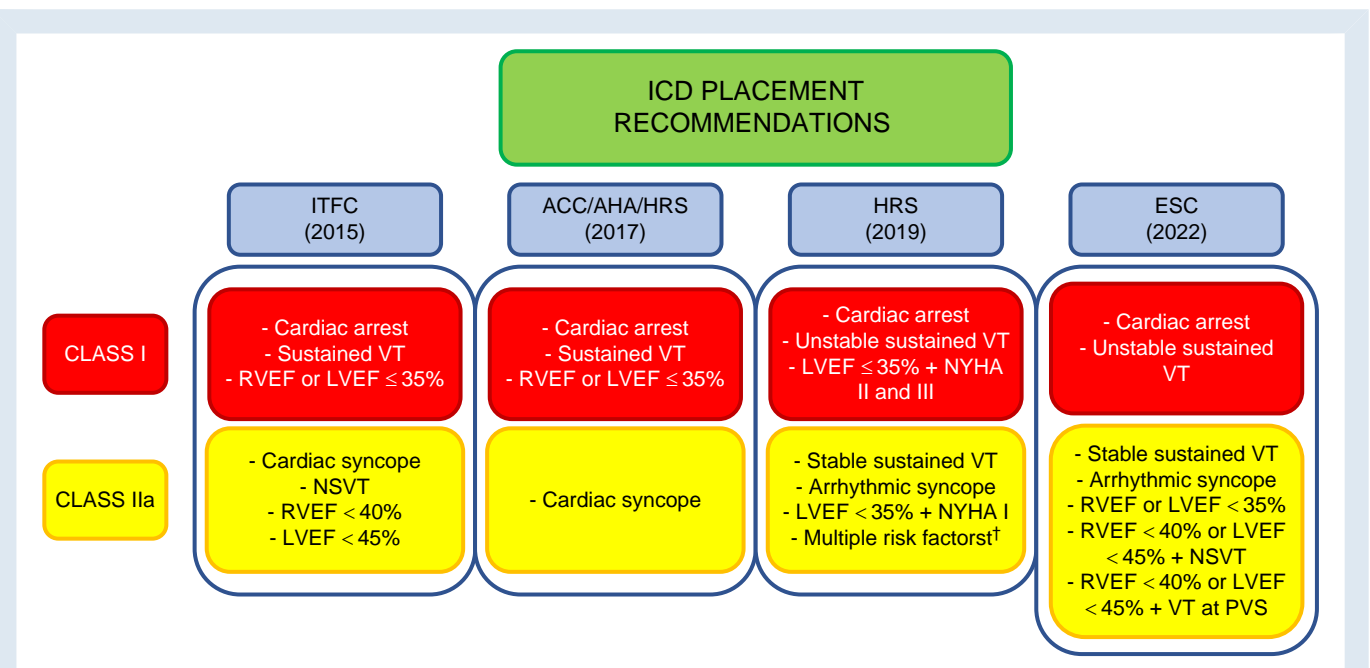
Continued

**Table 2 Continued**

First author/year	N of patients	Predictor	OR/HR
<b>PVC</b>			
Orgeron (2017) <sup>20</sup>	312	PVC burden > 1000/24 h	4.43
Orgeron (2018) <sup>38</sup>	365	PVC burden > 1000/24 h	5.24
Cadrin-Tourigny (2019) <sup>6</sup>	528	(log) 24-h PVC burden	1.19
Cadrin-Tourigny (2021) <sup>21</sup>	864	(log) 24-h PVC burden	1.12
Gasperetti (2022) <sup>35</sup>	169	(log) 24-h PVC burden	1.50
Carrick (2022) <sup>22</sup>	408	(log) 24-h PVC burden	1.321
Protonotarios (2022) <sup>26</sup>	554	(log) 24-h PVC burden	1.167
<b>RV function</b>			
Sarvari (2011) <sup>39</sup>	69	RV strain (1% decrease)	1.25
Sarvari (2011) <sup>39</sup>	69	RV FAC (5% decrease)	2.33
Canpolat (2013) <sup>30</sup>	78	RVEF reduction	3.76
Cappelletto (2018) <sup>34</sup>	98	RV FAC (1% increase)	0.35
Cadrin-Tourigny (2019) <sup>6</sup>	528	RVEF (1% decrease)	1.03
Bourfiss (2022) <sup>40</sup>	132	RV strain (1% decrease)	1.05
<b>LV function</b>			
Sarvari (2011) <sup>39</sup>	69	LV global longitudinal strain (1% decrease)	1.41
Canpolat (2013) <sup>30</sup>	78	LV involvement	2.88
Aquaro (2020) <sup>41</sup>	140	LV involvement	4.20
Aquaro (2020) <sup>41</sup>	140	LV dominant phenotype	3.40
Bourfiss (2022) <sup>40</sup>	132	LV strain (1% decrease)	1.22
<b>Miscellanea</b>			
Battipaglia (2012) <sup>29</sup>	30	RR variability in the LF amplitude	0.88
Mazzanti (2016) <sup>23</sup>	301	History of atrial fibrillation	4.38

Only studies reporting (i) a measure of association with arrhythmic events and (ii) patients with a definite diagnosis of ARVC by Task Force Criteria have been included in this table.

Downloaded from https://academic.oup.com/europace/article/25/1/1/eurad3127342230 by guest on 16 January 2024



**Figure 1** Summary of current guideline indications for ICD placement in patients with ARVC.

## Refinement of the arrhythmogenic right ventricular cardiomyopathy risk calculator

In the years following its development, a series of studies have aimed to improve and refine the ARVC risk calculator by assessing the role of variables that were not originally included and the impact of disease development during follow-up.<sup>52</sup>

### The role of physical exercise

Physical exercise is a well-known risk factor in patients with ARVC.<sup>58,59</sup> Multiple studies have shown that physical exercise, and in particular endurance training, is associated with an increase in disease penetrance, arrhythmic risk, and adverse cardiovascular outcomes in patients with ARVC.<sup>60,61</sup> A clear dose-response association between the quantity of physical exercise and an increase of risk has been shown,<sup>27,60</sup> as well as a significant improvement in clinical parameters (RVEF, PVC burden, NSVT, and stress test response) and a decrease of VA rates after de-training and exercise restriction.<sup>57,62</sup> Because of the close link between exercise and ARVC, a diagnosis of ARVC represents a contraindication to competitive sports eligibility, and patients with ARVC are recommended to limit the amount of vigorous endurance exercise they perform.<sup>13,48,50</sup>

In the first iteration of the ARVC risk calculator, no risk estimate correction for exercise exposure was included and it was therefore questioned whether this tool would adequately perform in ARVC patients with a high-dose exercise exposure. This question was first tested by Gasperetti et al. in a cohort of 20 high-end endurance athletes diagnosed with ARVC. Although underpowered, in this cohort, the ARVC risk calculator yielded a good performance, with an almost perfect overlap between predicted and observed risk.<sup>57</sup> These findings were later confirmed and expanded in a larger study performed by Bosman et al.<sup>27</sup> in which 176 definite diagnosis ARVC patients without prior sustained VA at the time of diagnosis underwent interview-based lifetime exercise exposure assessment. As expected, physical exercise at diagnosis was strongly associated with a higher arrhythmic risk in follow-up. The ARVC risk calculator performance for VA risk stratification, however, remained high [C statistic: 0.77 (0.71–0.84)] at all levels of exercise exposure (>18, >24, and >36 METh/week), and no significant improvement in model performance was shown when exercise exposure was included. Bosman et al. hypothesized that the performance of the ARVC risk calculator was maintained in athletes because high-level exercise exposure was strongly associated with at least five of the seven variables already included in the risk calculator (namely, young age, higher PVC count, more TWI at 12-lead ECG, NSVT, and lower RVEF) allowing its use in athletic and sedentary ARVC patients alike. While it is of paramount importance to recommend exercise de-training in patients with ARVC already at their first visit to reduce future events, the amount of exercise exposure does not seem to impair the performance of the risk stratification tool.

### Advanced imaging and the arrhythmogenic right ventricular cardiomyopathy risk calculator

Several advances in cardiac imaging permit the identification of additional parameters that could be of help when performing risk stratification assessments in patients with ARVC. Late gadolinium enhancement (LGE) on cardiac magnetic resonance (CMR) assessment, representing fibrosis, has been reported as a predictor of arrhythmic events in LV cardiomyopathies,<sup>63–65</sup> but LGE assessment in the RV is technically much more difficult due to the thinness of the RV wall. For this reason, data addressing the role of LGE in ARVC are limited, with most of the available studies focusing on the value of LV LGE,<sup>41</sup> which is generally

associated with advanced stages of disease. The relative importance of LGE presence on the risk of arrhythmic outcomes in ARVC is therefore still an understudied topic, and its potential additional role in risk stratification on top of currently available tools requires investigations.

There are more data on the relationship between speckle tracking and myocardial strain assessments and risk. Multiple reports have shown associations between reduced myocardial strain and arrhythmic outcomes in ARVC.<sup>40,66–70</sup> However, the integration of these findings with standardized risk assessment strategies such as the ARVC risk calculator had not been attempted until very recently. In a recent study of 132 patients with ARVC and no prior VA events by Bourfiss et al.,<sup>40</sup> RV and LV CMR-derived strains were shown to be significantly associated with VA events during follow-up. However, both parameters lost statistical significance after correcting for RVEF, LVEF, or the predicted arrhythmic risk derived from the ARVC risk calculator. Similarly, the performance of the ARVC risk calculator was not shown to improve significantly if the CMR-derived strain parameter with the strongest association with arrhythmic events (namely, the LV global and septal circumferential strain) was added to the model. It is important to note, however, that the study largely consisted of ARVC patients with right-dominant disease (64% were PKP2 carriers) and may have been underpowered to evaluate strain as an arrhythmic risk predictor in those with biventricular or left-dominant disease. Additionally, it should be noted that standardization of myocardial speckle tracking is an important scientific and clinical problem and these specific findings may not be fully replicable in imaging obtained through a different imaging software.

### Programmed ventricular stimulation in primary prevention assessments

Another area of potential improvement for the ARVC risk calculator was the integration of VT inducibility during PVS. Over the years, the role of PVS for arrhythmic risk stratification or patients with ARVC has been extensively debated, with some studies reporting a poor positive predictive value<sup>28</sup> and multiple others suggesting it could have a significant role in the risk stratification process.<sup>20,31,71–74</sup> These studies have been hampered by small sample sizes, non-uniform PVS protocols, and the inclusion of patients with both borderline and definite diagnoses of ARVC, as well as both patients with and without a history of previous sustained VA. For these reasons, clear data addressing the utility of PVS in patients with ARVC and no previous VA events were lacking until recently.

A recent multicentre study from Gasperetti et al.<sup>33</sup> reported data from 288 patients with definite ARVC without a previous history of sustained VA undergoing PVS. Half of the study cohorts were inducible for monomorphic VT. Inducibility was a strong independent predictor of sustained VA during follow-up above and beyond the predictions of the risk calculator. Through a Bayesian analysis, PVS inducibility was integrated into the risk predictions from the ARVC risk calculator pre-test probability, offering a refined 5-year risk estimation and improving the performance of the prediction model. The maximal benefit of PVS results was observed in patients with a low/moderate ARVC risk calculator-derived risk (5-year risk < 25%). In this subset of patients, PVS yielded a high negative predictive value (92.6%) for VA. A negative PVS result therefore can be used as an additional factor in favour of deferring ICD use. The arvcrisk.com website has been updated to allow for individual calculation using this Bayesian approach.

### Longitudinal assessment of arrhythmic risk over time

The ARVC risk calculator was developed to provide 5-year arrhythmic risk estimation and to aid the decision-making process at a single time point. ARVC, however, is a progressive condition, and patient risk profiles may change over time due to the dynamic nature of the arrhythmic

**Table 3** Original development study, external validation studies, and additional calculator refinements

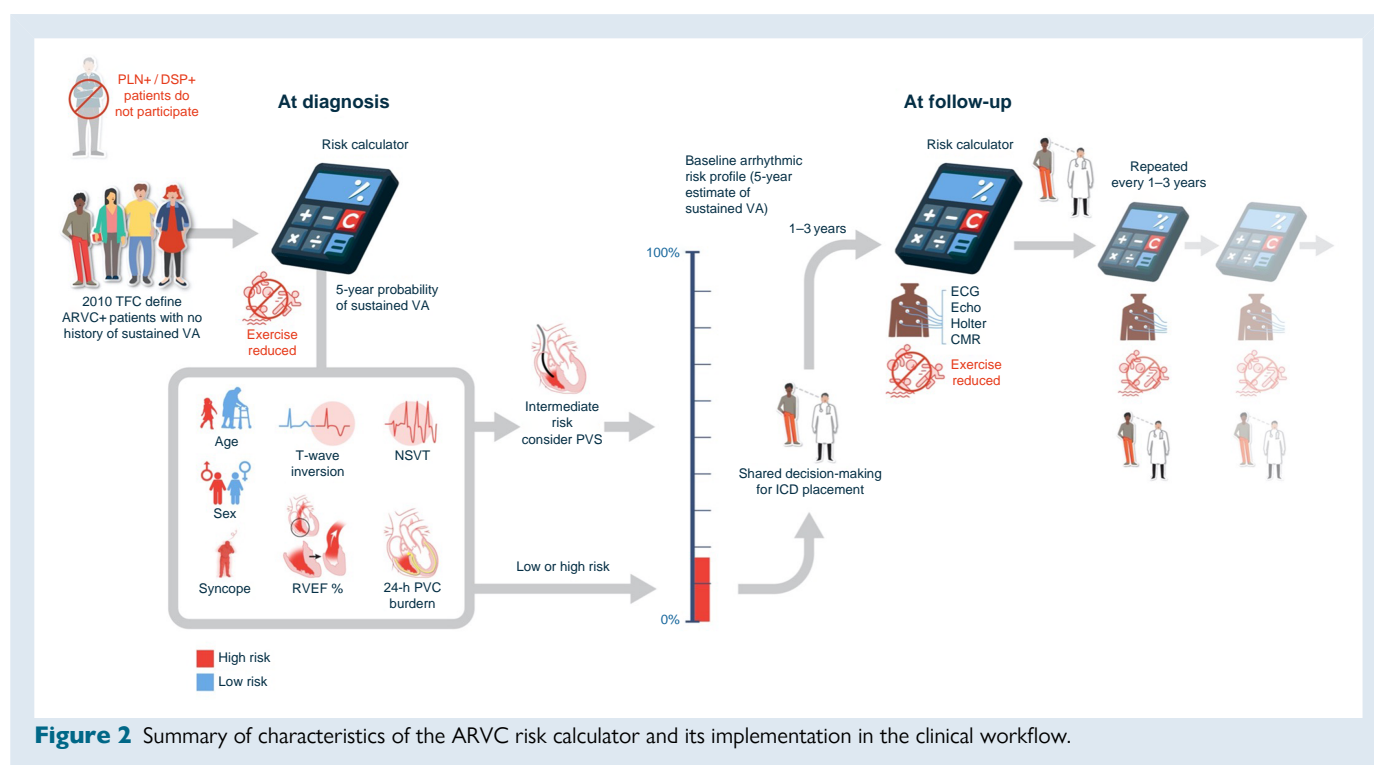
	<b>Pts (n)</b>	<b>Pts with ICD at baseline (n%)</b>	<b>Follow-up (years)</b>	<b>Total events (n%)</b>	<b>ICD shocks (n%)</b>	<b>Findings</b>	<b>Comments</b>
Original development study							
Cadrin-Tourigny <i>et al.</i> <sup>6</sup> (2019)	528	218 (41.3)	4.83 (2.44–9.33)	146 (27.7)	102 (19.3)	Overall C statistic: 0.77 (0.73–0.81)	Development of the ARVC risk calculator
External validation studies							
Casella <i>et al.</i> <sup>32</sup> (2020)	82	54 (65.9)	5.41 (2.59–8.37)	28 (34.1)	23 (28.0)	Good performance of risk calculator in classic ARVC forms	Risk calculator underpredicts risk in BiV/LD forms
Gasperetti <i>et al.</i> <sup>57</sup> (2020)	20	7 (35.0)	5.3 (3.2–6.6)	6 (30.0)	5 (25.0)	Good performance of risk calculator in ARVC patients with a high exercise exposure	Very high-end endurance athlete cohort
Aquaro <i>et al.</i> <sup>41</sup> (2020)	140	51 (36.4)	5.0 (2.0–8.0)	48 (34)	33 (23.6)	Good performance of risk calculator in classic ARVC forms	Mix of primary/secondary prevention pts; risk calculator underpredicts risk in BiV/LD forms
Baudinaud <i>et al.</i> <sup>53</sup> (2021)	115	1 (0.9)	7.8 (6.1–9.7)	15 (13.0)	2 (1.7)	C statistic: 0.84 (0.74–0.93)	Risk overestimation for low risk patients
Zhang <i>et al.</i> <sup>54</sup> (2022)	88	70 (79.5)	3.9 (1.6–6.9)	57 (64.8)	57 (64.8)	Overall C statistic: 0.681 (0.567–0.796) Primary prevention C statistic: 0.833 (0.615–1.000) Secondary prevention C statistic: 0.640 (0.510–0.770)	Mix of primary and secondary prevention pts
Protonotarios <i>et al.</i> <sup>26</sup> (2022)	554	263 (47.5)	6.0 (3.1–12.5)	100 (18.1)	52 (9.3)	Overall C statistic: 0.75 (0.70–0.81) Gene-positive C statistic: 0.82 (0.76–0.88) Gene-elusive C statistic: 0.65 (0.57–0.74) PKP-2 C statistic: 0.83 (0.75–0.91) DSP C statistic: 0.80 (0.53–0.96) C statistic: 0.70 (0.65–0.75)	Significant impact of genotype on risk calculator performance
Jordà <i>et al.</i> <sup>55</sup> (2022)	429	175 (40.8)	5.02 (2.05–7.90)	103 (24)	61 (14.2)	C statistic: 0.77 (0.71–0.84)	Main validation study
Additional calculator refinements							
Bosman <i>et al.</i> <sup>27</sup> (2022)	176	N/A	5.4 (2.7–9.7)	53 (30.1)	40 (22.7)	C statistic: 0.77 (0.71–0.84)	No need for exercise correction in the risk calculator estimates
Gasperetti <i>et al.</i> <sup>33</sup> (2022)	288	78 (27.1)	5.31 (2.89–10.17)	120 (41.7)	89 (30.9)	Integrated C statistic of risk calculator + PVS: 0.75	Maximal benefit of PVS in moderate risk patients (<25% 5-year predicted risk) for ICD exclusion
Bourfiss <i>et al.</i> <sup>40</sup> (2022)	132	68 (51.5)	4.3 (2.0–7.9)	25 (19.0)	22 (16.7)	C statistic Risk Calc: 0.76 (0.63–0.90) Integrated C statistic risk calc + LV strain: 0.82 (0.72–0.92)	Inclusion of CMR derived LV global and septal circumferential strain does not improve the model

substrate.<sup>35,75,76</sup> Thus, initial arrhythmic risk assessments in ARVC patients may not hold true during longitudinal follow-up. Patients initially at low arrhythmic risk may move towards higher risk brackets (or vice versa), potentially benefitting from a follow-up conversation regarding the need for ICD. Additionally, transient 'hot phases' of active inflammation and increased arrhythmic risk have been described during the natural history of this disease.<sup>77</sup> It is therefore of paramount importance to re-assess ARVC patients during follow-up.

While the impact of repeated testing and longitudinal risk stratification in ARVC is understudied, a number of recent studies provide insight into this important clinical question. In agreement with new recommendations for the repeated use of ambulatory cardiac monitoring every 12–18 months for re-assessment of arrhythmic risk in ARVC patients,<sup>35</sup> changes in the burden of PVCs and NSVT have been shown parallel arrhythmic risk. In particular, sudden increases in the number of PVCs (sometimes referred to as 'PVC spikes') on Holter monitoring are associated with increased arrhythmic risk in the year immediately following assessment. These data were recently confirmed and integrated by Carrick et al.,<sup>22</sup> who reported on the dynamic performance of the ARVC risk calculator during longitudinal follow-up. This decrement in predictive discrimination, however, was negated through repeat estimation of 5-year arrhythmic risk using the ARVC risk calculator and updated assessments of clinical risk factors (e.g. repeated 24-h Holter, echocardiograms, and CMRs). Incorporating these updated risk factors into repeated predictions meant that the performance of the ARVC risk calculator remained excellent during long-term follow-up [C statistic ranging between 0.83 (0.80–0.86) and 0.79 (0.73–0.85)]. Repeated use of the ARVC risk calculator for dynamic arrhythmic risk assessment using updated clinical risk factors seems effective and, given current expert consensus recommendations for repeated clinical examinations, may be reasonably easy to implement within the everyday workflow of ARVC clinics. Additional prospective studies on this topic are clearly needed, with the goal of supporting new, data-driven recommendations for longitudinal arrhythmic risk assessment in ARVC.

## Comparison of the arrhythmogenic right ventricular cardiomyopathy risk calculator with other guidelines

Current data suggest that the ARVC risk calculator is a useful adjunct to risk stratification in ARVC (Figure 2). That said, the decision of whether to use this tool in lieu of other stratification algorithms (e.g. the 2015 ITFC consensus, the 2017 AHA guidelines for SCD, or the 2019 HRS consensus) should depend on the reliability and accuracy of this tool compared to alternative strategies in the prediction of VA events. In the original publication, a hypothetical strategy for ICD decision-making based upon the ARVC risk calculator demonstrated superior clinical net benefit (defined as the number of ICDs placed for treated event) compared with the 2015 ITFC Consensus regardless of the threshold used for recommending ICD implantation. There, the same level of protection from VA events was achieved with an average 20.3% reduction in ICD implantation.<sup>6</sup> A subsequent analysis from Aquaro et al.<sup>78</sup> showed an ARVC risk calculator 5-year estimated risk threshold of 10% for ICD implant achieving a higher protection rate and clinical net benefit than both 2015 ITFC and 2019 HRS recommendations. Similarly, in the patient cohort from Casella et al., an ARVC risk calculator-derived 5-year risk threshold ranging between 12.5% and 17.5% was identified as superior to the 2015 ITFC algorithm.<sup>32</sup> The analysis from Baudinaud et al. instead showed risk overestimation from the ARVC risk calculator for predicted risk estimates <50%; nonetheless, the ARVC risk calculator still outperformed the 2015 ITFC in their patient population.<sup>53</sup> Finally, in the ARVC patient population presented by Jordà et al. for model validation, the ARVC risk calculator clinical benefit resulted superior to the 2015 ITFC, 2017 AHA, and 2019 HRS ICD placement recommendations at all given thresholds, with the ARVC risk calculator and the 2019 HRS performance becoming similar for 5-year risk estimates of ~35%.<sup>55</sup> The risk calculator seems therefore to perform better for arrhythmic risk stratification in primary prevention patients with



**Figure 2** Summary of characteristics of the ARVC risk calculator and its implementation in the clinical workflow.



ARVC than all the currently available risk stratification guidelines. This tool has been tested and found effective in a significant patient population (more than 1500 different ARVC patients combined) ascertained from different specialists (electrophysiologists and heart failure experts) and across different continents (Europe, America, and Asia).

One of the major unanswered questions in primary prevention of VA generally is whether specific risk thresholds should be used to guide ICD placement. Increasingly, guidelines are moving towards a more nuanced approach in which a reliable risk estimate is only one part of a discussion between patient and their healthcare team. Patient preferences and values should inform this discussion, and there are likely important gender-related, cultural and socio-economic factors that may need to be considered. Moreover, the realities of specific healthcare systems inevitably colour discussions about thresholds of 'acceptable risk'. In this context, the ARVC risk calculator does not replace the human element in disease management<sup>79</sup> but instead provides a rational, evidence-based tool that can be integrated into a comprehensive and holistic clinical workflow.

## Future directions

The current ARVC risk calculator is appropriate for patients fulfilling a definite diagnosis of ARVC. However, while gene-elusive and *PKP2* variants represent the majority of ARVC cases fulfilling 2010 TFC at the time of their first sustained VA, fewer than half of patients carrying variants in genes such as *DSP*, *PLN*, and *FLNC* do so.<sup>7,80–82</sup> Patients with these genotypes represent a distinct ACM subpopulation, with biventricular and left-dominant phenotypes significantly differing from the classical RV dominant disease for which ARVC guidelines were developed. While these genotypes are associated with a significant arrhythmic burden, the most appropriate risk stratification strategies for these patients remain an active area of investigation. Analyses from Casella *et al.*<sup>32</sup> and Aquaro *et al.*<sup>41</sup> reported a significant underprediction ARVC risk calculator-derived VA risk in patients with a left-dominant ARVC phenotype, while Protonotarios *et al.*<sup>26</sup> showed the ARVC risk calculator over-predicting arrhythmic risk in patients with a P/LP variants in the *DSP* gene fulfilling the conditions for ARVC risk calculator usage.

The recognition that the presentation and natural history of heart muscle diseases are heavily influenced by common and rare genetic variation is propelling efforts to evolve the current phenotype-based approach to diagnosis and risk stratification to one based on a more comprehensive disease description that includes genotypical aetiology.<sup>48</sup> Among patients with a 2010 TFC phenotype, Protonotarios *et al.*<sup>26</sup> clearly showed the strong importance of the underlying genotype when assessing individual ARVC patients' risk for VA. A recent study from Paldino *et al.* showed that a genotype-based classification of cardiomyopathies allows an improved long-term arrhythmic outcome stratification compared with a phenotype-based one among patients with genetically determined dilated cardiomyopathy and ARVC phenotypes.<sup>82</sup> In their cohort, patients with *DSP*, *LMNA*, and *FLNC* variants experienced consistent VA event rates regardless of the fulfilment of the 2010 TFC or their initial clinical diagnosis.

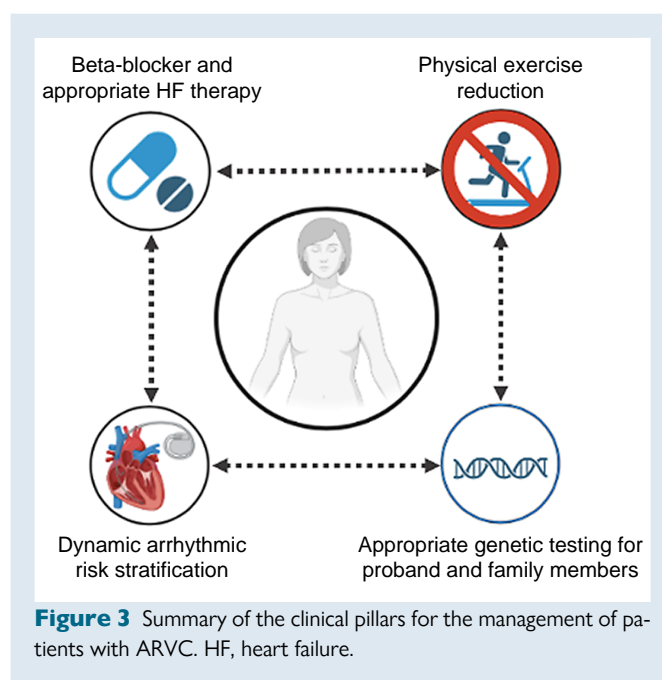
Clearly, more data characterizing the impact of genotype on arrhythmic risk are needed. In addition to P/LP variants in different genes demonstrating significantly different rates of arrhythmic events, variants occurring in differing regions of the same gene may produce clinically significant differences in arrhythmic risk.<sup>83</sup> Given the strong apparent influence of genetic information on arrhythmic events, we envision a shift towards management strategies developed from a 'genotype first' perspective rather than strategies developed in patient cohorts defined by phenotype alone. Although we expect many of the same VA risk factors (i.e. NSVT and RV/LV dysfunction) to be shared across ARVC patients with different underlying genetic variants, their relative weight may vary and the role of some environmental modifiers (i.e. physical exercise)

may be different. Indeed, evidence is emerging that this is true for some other cardiomyopathies as well. Gene-specific algorithms have already been proposed with good results for some ARVC genotypes,<sup>7,82</sup> as well as for other genetically determined cardiomyopathies,<sup>84</sup> regardless of their phenotype. A precision medicine approach accounting for the genotype and for the clinical and structural characteristics of those diseases seems to be the future of the field of ACM.

## Suggested approach to disease assessment

When evaluating a patient with suspected ARVC, the first task faced by a clinician is to determine if they in fact have ARVC (Figure 3). Currently, the 2010 Task Force Criteria are the benchmark criteria that are well accepted and have been the foundation of all the recent research studies. Nonetheless, the possibility of diagnostic overlap with other arrhythmic syndromes, cardiomyopathies, or exercise-induced adaptations is well known.<sup>59,85–89</sup> Referral of patients with an unclear final diagnosis of ARVC to high-volume expert centres is recommended, where advanced imaging labs and dedicated cardiogenetic programmes for clinical core lab may help in reaching an appropriate final diagnosis. Due to the strong importance of the underlying gene variant, genetic testing at the first patient assessment is appropriate.

Once an ARVC diagnosis is established or strongly suspected, the next priority is to estimate their individual arrhythmic risk. If a patient has had a prior sustained VA, their risk of a potentially life-threatening VA is high enough to warrant consideration of ICD implantation. For individuals without a prior episode of sustained VA, the ARVC risk calculator is a helpful and easily implemented tool that facilitates informed discussion about prophylactic ICD implantation. At this point, patient preferences and values play an important role.<sup>90</sup> Some patients are very concerned about any risk of cardiac arrest and welcome the security provided by an ICD. Other patients are reluctant to consider a device despite the risks at stake. A case-by-case discussion between patient and physician should be held at the time of the first risk assessment and then at intervals during follow-up.



**Figure 3** Summary of the clinical pillars for the management of patients with ARVC. HF, heart failure.

Patients should be counselled to avoid all competitive and endurance sports and to not exceed activity levels suggested by the ACC/AHA guidelines for a healthy lifestyle.<sup>91</sup> Additionally, they should be on a beta-blocker and, if ventricular dysfunction is present, heart failure-optimized medical therapy. Anti-arrhythmic medications (i.e. flecainide) and more invasive procedures (i.e. catheter ablation for VT or other complex arrhythmias) instead, although safe and exceedingly useful for the management of some patients, at the current state of evidence should not be offered to all patients with ARVC but implemented on a case-by-case basis.<sup>92–99</sup> Furthermore, they should have an ECG and Holter every year and repeat imaging with an echocardiogram and/or CMR every 2 or 3 years. These new clinical studies should be used to repeat and update the risk assessment using the ARVC risk calculator, to dynamically track changes in the predicted risk of arrhythmic events. Changes in symptoms, especially with syncope or pre-syncope, should prompt immediate re-evaluation. Finally, screening of relatives of ARVC patients to facilitate early diagnosis and to prevent SCD should be considered.<sup>100,101</sup> Genetic testing can strongly inform this process. When an ARVC patient has a P/LP variant associated with their disease cascade, genetic testing in conjunction with cardiac screening is recommended. Asymptomatic family members with normal ECG and imaging who have not inherited a familial variant may be discharged from follow-up while relatives with a P/LP variant require longitudinal follow-up.<sup>48</sup> At-risk first-degree relatives of gene-elusive ARVC patients should also be screened although the optimal timing is still uncertain.<sup>102,103</sup>

## Limitations of the calculator

The current ARVC risk calculator presents three main limitations that should be highlighted in order to provide the reviewer with a complete assessment of this tool. The first limitation regards its applicability: currently, only patients with an ARVC diagnosis as per the 2010 Task Force Criteria are eligible for its use in the clinical setting. This inclusion criterion prevents patients presenting with other forms of ACM (mainly those presenting with a left-sided disease *ab initio*) to benefit from this risk stratification strategy. With the upcoming introduction of an even more refined gene-first classification and stratification approach, we hope that gene-specific risk stratification tools will be developed in the near future, to overcome this limitation. The second limitation regards the primary endpoint predicted by the calculator, which is a composite of a combination of sustained VA and ICD therapies. While clinically meaningful, ICD shocks are but an imperfect proxy for SCD events and it is difficult to address how many of those events may have degenerated into an actual SCD event.<sup>79</sup> The version of the risk calculator predicting only fast VA and SCD events<sup>21</sup> is yet waiting for external validation. This point should be carefully considered before clinical decision-making is performed with this tool, which is not meant to replace but to aid individual physician expertise and inform and empower individual patients. Finally, several additional disease risk features that have been described over the years (i.e. presence of LGE in the LV, the development of 'hot phases' of disease/episodes of myocarditis, or the value of low potentials and scarring at electro-anatomical mapping) may be of additional value in a risk stratification strategy based on the ARVC risk calculator. Multiple studies are currently being performed to integrate the data in the risk calculator as well, and it is our hope that new, more comprehensive versions of the risk calculator will be made available in the near future.

## Conclusion

This review represents a comprehensive summary of the current state of the art in the field of risk stratification for patients with ARVC. The management of patients with ARVC and their family members is a

complicated task. The progress achieved over the last few years, however, allows us to have a bright hope for the future. As our understanding of this disease will progressively increase over the upcoming years, with new additional gene-specific insights being unlocked by multiple groups across the planet, we hope that soon even more patient-specific and individual-tailored risk stratification will become available to the clinicians, with our main goal remaining the minimizing of SCD events in ARVC, while avoiding ICD implantation in subjects not likely to require ICD therapy.

## Funding

No funding was received for the crafting of this manuscript

**Conflict of interest:** none declared.

## References

- Corrado D, Link MS, Calkins H. Arrhythmogenic right ventricular cardiomyopathy. *N Engl J Med* 2017;**376**:61–72.
- Miles C, Finocchiaro G, Papadakis M, Gray B, Westaby J, Ensam B et al. Sudden death and left ventricular involvement in arrhythmogenic cardiomyopathy. *Circulation* 2019;**139**:1786–97.
- Bennett RG, Haqqani HM, Berrueto A, Della Bella P, Marchlinski FE, Hsu CJ et al. Arrhythmogenic cardiomyopathy in 2018–2019: ARVC/ALVC or both? *Heart Lung Circ* 2019;**28**:164–77.
- Casella M, Gasperetti A, Sicuso R, Conte E, Catto V, Sommariva E et al. Characteristics of patients with arrhythmogenic left ventricular cardiomyopathy: combining genetic and histopathologic findings. *Circ Arrhythm Electrophysiol* 2020;**13**:e009005. <https://www.ahajournals.org/doi/10.1161/CIRCEP.120.009005> [cited 2020 Dec 29]
- James CA, Jongbloed JDH, Hershberger RE, Morales A, Judge DP, Syrris P et al. International evidence based reappraisal of genes associated with arrhythmogenic right ventricular cardiomyopathy using the clinical genome resource framework. *Circ Genom Precis Med* 2021;**14**:e003273.
- Cadrin-Tourigny J, Bosman LP, Nozza A, Wang W, Tadros R, Bhonsale A et al. Retracted and republished: a new prediction model for ventricular arrhythmias in arrhythmogenic right ventricular cardiomyopathy. *Eur Heart J* 2019;**40**:1850–8. Available from: <https://academic.oup.com/eurheartj/advance-article/doi/10.1093/eurheartj/ehz103/5419784> [cited 2019 Apr 26].
- Verstraelen TE, van Lint FHM, Bosman LP, de Brouwer R, Proost VM, Abeln BGS et al. Prediction of ventricular arrhythmia in phospholamban p.Arg14del mutation carriers—reaching the frontiers of individual risk prediction. *Eur Heart J* 2021;**42**:2842–50.
- Bhonsale A, Groeneweg JA, James CA, Dooijes D, Tichnell C, Jongbloed JDH et al. Impact of genotype on clinical course in arrhythmogenic right ventricular dysplasia/cardiomyopathy-associated mutation carriers. *Eur Heart J* 2015;**36**:847–55.
- Krahn AD, Healey JS, Chauhan V, Birnie DH, Simpson CS, Champagne J et al. Systematic assessment of patients with unexplained cardiac arrest: cardiac arrest survivors with preserved ejection fraction registry (CASPER). *Circulation* 2009;**120**:278–85.
- Finocchiaro G, Papadakis M, Robertus JL, Dhutia H, Steriotis AK, Tome M et al. Etiology of sudden death in sports. *J Am Coll Cardiol* 2016;**67**:2108–15.
- Marcus FI, McKenna WJ, Sherrill D, Basso C, Bauce B, Bluemke DA et al. Diagnosis of arrhythmogenic right ventricular cardiomyopathy/dysplasia: proposed modification of the task force criteria. *Eur Heart J* 2010;**31**:806–14.
- Wang W, James CA, Calkins H. Diagnostic and therapeutic strategies for arrhythmogenic right ventricular dysplasia/cardiomyopathy patient. *Europace* 2019;**21**:9–21.
- Corrado D, Wichter T, Link MS, Hauer R, Marchlinski F, Anastasakis A et al. Treatment of arrhythmogenic right ventricular cardiomyopathy/dysplasia: an International Task Force consensus statement. *Eur Heart J* 2015;**132**:441–53.
- Gulletta S, Gasperetti A, Schiavone M, Vogler J, Fastenrath F, Breitenstein A et al. Age-related differences and associated mid-term outcomes of subcutaneous implantable cardioverter-defibrillators: a propensity-matched analysis from a multicenter European registry. *Heart Rhythm* 2022;**19**:1109–15.
- Wang W, Gasperetti A, Sears SF, Tichnell C, Murray B, Tandri H et al. Subcutaneous and transvenous defibrillators in arrhythmogenic right ventricular cardiomyopathy. *JACC Clin Electrophysiol* 2022;**9**:394–402.
- Schinkel AFL. Implantable cardioverter defibrillators in arrhythmogenic right ventricular dysplasia/cardiomyopathy: patient outcomes, incidence of appropriate and inappropriate interventions, and complications. *Circ Arrhythm Electrophysiol* 2013;**6**:562–8.
- Christensen AH, Platonov PG, Svensson A, Jensen HK, Rootwelt-Norberg C, Dahlberg P et al. Complications of implantable cardioverter-defibrillator treatment in arrhythmogenic right ventricular cardiomyopathy. *Europace* 2022;**24**:306–12.
- Olde Nordkamp LRA, Postema PG, Knops RE, van Dijk N, Limpens J, Wilde AAM et al. Implantable cardioverter-defibrillator harm in young patients with inherited

- arrhythmia syndromes: a systematic review and meta-analysis of inappropriate shocks and complications. *Heart Rhythm* 2016;**13**:443–54.
19. Krahn AD, Wilde AAM, Calkins H, La Gerche A, Cadrin-Tourigny J, Roberts JD *et al*. Arrhythmogenic right ventricular cardiomyopathy. *JACC Clin Electrophysiol* 2022;**8**: 533–53.
  20. Orgeron GM, James CA, Te Riele A, Tichnell C, Murray B, Bhonsale A *et al*. Implantable cardioverter-defibrillator therapy in arrhythmogenic right ventricular dysplasia/cardiomyopathy: predictors of appropriate therapy, outcomes, and complications. *JAHA [Internet]* 2017;**6**:e006242. Available from: <https://www.ahajournals.org/doi/10.1161/JAHA.117.006242> [cited 2021 Mar 24].
  21. Cadrin-Tourigny J, Bosman LP, Wang W, Tadros R, Bhonsale A, Bourfiss M *et al*. Sudden cardiac death prediction in arrhythmogenic right ventricular cardiomyopathy: a multinational collaboration. *Circ Arrhythm Electrophysiol* 2021;**14**:e008509. Available from: <https://www.ahajournals.org/doi/10.1161/CIRCEP.120.008509> [cited 2021 Feb 7].
  22. Carrick RT, te Riele ASJM, Gasperetti A, Bosman L, Muller SA, Pendleton C *et al*. Longitudinal prediction of ventricular arrhythmic risk in patients with arrhythmogenic right ventricular cardiomyopathy. *Circ Arrhythm Electrophysiol* 2022;**15**:e011207.
  23. Mazzanti A, Ng K, Faragli A, Maragna R, Chiodaroli E, Orphanou N *et al*. Arrhythmogenic right ventricular cardiomyopathy. *J Am Coll Cardiol* 2016;**68**:2540–50.
  24. Martin A, Crawford J, Skinner JR, Smith W. High arrhythmic burden but low mortality during long-term follow-up in arrhythmogenic right ventricular cardiomyopathy. *Heart Lung Circ* 2016;**25**:275–81.
  25. Lin CY, Chung FP, Lin YJ, Chang SL, Lo LW, Hu YF *et al*. Gender differences in patients with arrhythmogenic right ventricular dysplasia/cardiomyopathy: clinical manifestations, electrophysiological properties, substrate characteristics, and prognosis of radiofrequency catheter ablation. *Int J Cardiol* 2017;**227**:930–7.
  26. Protonotarios A, Bariani R, Cappelletto C, Pavlou M, García-García A, Cipriani A *et al*. Importance of genotype for risk stratification in arrhythmogenic right ventricular cardiomyopathy using the 2019 ARVC risk calculator. *Eur Heart J* 2022;**43**:3053–67.
  27. Bosman LP, Wang W, Lie ØH, van Lint FHM, Rootwelt-Norberg C, Murray B *et al*. Integrating exercise into personalized ventricular arrhythmia risk prediction in arrhythmogenic right ventricular cardiomyopathy. *Circ Arrhythm Electrophysiol* 2022;**15**: e010221.
  28. Corrado D, Calkins H, Link MS, Leoni L, Favale S, Bevilacqua M *et al*. Prophylactic implantable defibrillator in patients with arrhythmogenic right ventricular cardiomyopathy/dysplasia and no prior ventricular fibrillation or sustained ventricular tachycardia. *Circulation* 2010;**122**:1144–52.
  29. Battipaglia I, Scalone G, Macchione A, Pinnacchio G, Laurito M, Milo M *et al*. Association of heart rate variability with arrhythmic events in patients with arrhythmogenic right ventricular cardiomyopathy/dysplasia. *Circ J* 2012;**76**:618–23.
  30. Canpolat U, Kabakçi G, Aytemir K, Dural M, Şahiner L, Yorgun H *et al*. Fragmented QRS complex predicts the arrhythmic events in patients with arrhythmogenic right ventricular cardiomyopathy/dysplasia: frQRS and outcomes in ARVC/D. *J Cardiovasc Electrophysiol* 2013;**24**:1260–6.
  31. Bhonsale A, James CA, Tichnell C, Murray B, Gagari D, Philips B *et al*. Incidence and predictors of implantable cardioverter-defibrillator therapy in patients with arrhythmogenic right ventricular dysplasia/cardiomyopathy undergoing implantable cardioverter-defibrillator implantation for primary prevention. *J Am Coll Cardiol* 2011;**58**:1485–96.
  32. Casella M, Gasperetti A, Gaetano F, Busana M, Sommariva E, Catto V *et al*. Long-term follow-up analysis of a highly characterized arrhythmogenic cardiomyopathy cohort with classical and non-classical phenotypes—a real-world assessment of a novel prediction model: does the subtype really matter. *Europace* 2020;**22**:797–805. [cited 2020 Jan 16]
  33. Gasperetti A, Carrick RT, Costa S, Compagnucci P, Bosman LP, Chivulescu M *et al*. Programmed ventricular stimulation as an additional primary prevention risk stratification tool in arrhythmogenic right ventricular cardiomyopathy: a multinational study. *Circulation* 2022;**146**:1434–43.
  34. Cappelletto C, Stolfo D, De Luca A, Pinamonti B, Barbati G, Pivetta A *et al*. Lifelong arrhythmic risk stratification in arrhythmogenic right ventricular cardiomyopathy: distribution of events and impact of periodical reassessment. *Europace* 2018;**20**:f20–9.
  35. Gasperetti A, Cappelletto C, Carrick R, Targetti M, Tichnell C, Martino A *et al*. Association of premature ventricular contraction burden on serial Holter monitoring with arrhythmic risk in patients with arrhythmogenic right ventricular cardiomyopathy. *JAMA Cardiol* 2022;**7**:378.
  36. Santangeli P, Dello Russo A, Pieroni M, Casella M, Di Biase L, Burkhardt JD *et al*. Fragmented and delayed electrograms within fibrofatty scar predict arrhythmic events in arrhythmogenic right ventricular cardiomyopathy: results from a prospective risk stratification study. *Heart Rhythm* 2012;**9**:1200–6.
  37. Migliore F, Forzi A, Silvano M, Bevilacqua M, Leoni L, Marra MP *et al*. Prognostic value of endocardial voltage mapping in patients with arrhythmogenic right ventricular cardiomyopathy/dysplasia. *Circ Arrhythm Electrophysiol* 2013;**6**:167–76.
  38. Orgeron GM, te Riele A, Tichnell C, Wang W, Murray B, Bhonsale A *et al*. Performance of the 2015 International Task Force consensus statement risk stratification algorithm for implantable cardioverter-defibrillator placement in arrhythmogenic right ventricular dysplasia/cardiomyopathy. *Circ Arrhythm Electrophysiol* 2018;**11**: e005593.
  39. Sarvari SI, Haugaa KH, Anfinsen OG, Leren TP, Smiseth OA, Kongsgaard E *et al*. Right ventricular mechanical dispersion is related to malignant arrhythmias: a study of patients with arrhythmogenic right ventricular cardiomyopathy and subclinical right ventricular dysfunction. *Eur Heart J* 2011;**32**:1089–96.
  40. Bourfiss M, Prakken NHJ, James CA, Planken RN, Boekholdt SM, Ahmetagic D *et al*. Prognostic value of strain by feature-tracking cardiac magnetic resonance in arrhythmogenic right ventricular cardiomyopathy. *Eur Heart J Cardiovasc Imaging* 2022;**24**: 98–107.
  41. Aquaro GD, De Luca A, Cappelletto C, Raimondi F, Bianco F, Botto N *et al*. Prognostic value of magnetic resonance phenotype in patients with arrhythmogenic right ventricular cardiomyopathy. *J Am Coll Cardiol* 2020;**75**:2753–65.
  42. Akdis D, Saguner AM, Shah K, Wei C, Medeiros-Domingo A, von Eckardstein A *et al*. Sex hormones affect outcome in arrhythmogenic right ventricular cardiomyopathy/dysplasia: from a stem cell derived cardiomyocyte-based model to clinical biomarkers of disease outcome. *Eur Heart J* 2017;**38**:1498–508.
  43. Costa S, Saguner AM, Gasperetti A, Akdis D, Brunckhorst C, Duru F. The link between sex hormones and susceptibility to cardiac arrhythmias: from molecular basis to clinical implications. *Front Cardiovasc Med* 2021;**8**:644279.
  44. Corrado D, Leoni L, Link MS, Bella PD, Gaita F, Curnis A *et al*. Implantable cardioverter-defibrillator therapy for prevention of sudden death in patients with arrhythmogenic right ventricular cardiomyopathy/dysplasia. *Circulation* 2003;**108**: 3084–91.
  45. Wichter T, Paul M, Wollmann C, Acil T, Gerdes P, Ashraf O *et al*. Implantable cardioverter/defibrillator therapy in arrhythmogenic right ventricular cardiomyopathy: single-center experience of long-term follow-up and complications in 60 patients. *Circulation* 2004;**109**:1503–8.
  46. Turrini P, Corrado D, Basso C, Nava A, Bauce B, Thiene G. Dispersion of ventricular depolarization-repolarization: a noninvasive marker for risk stratification in arrhythmogenic right ventricular cardiomyopathy. *Circulation* 2011;**123**:3075–80.
  47. Pezawas T, Stix G, Kastner J, Schneider B, Wolzt M, Schmidinger H. Ventricular tachycardia in arrhythmogenic right ventricular dysplasia/cardiomyopathy: clinical presentation, risk stratification and results of long-term follow-up. *Int J Cardiol* 2006;**107**:360–8.
  48. Towbin JA, McKenna WJ, Abrams DJ, Ackerman MJ, Calkins H, Darrieux FCC *et al*. 2019 HRS expert consensus statement on evaluation, risk stratification, and management of arrhythmogenic cardiomyopathy. *Heart Rhythm*;2019;**16**:e301–72.
  49. Zeppenfeld K, Tfelt-Hansen J, de Riva M, Winkel BG, Behr ER, Blom NA *et al*. 2022 ESC guidelines for the management of patients with ventricular arrhythmias and the prevention of sudden cardiac death. *Eur Heart J* 2022;**43**:3997–4126.
  50. Al-Khatib SM, Stevenson WG, Ackerman MJ, Bryant WJ, Callans DJ, Curtis AB *et al*. 2017 AHA/ACC/HRS guideline for management of patients with ventricular arrhythmias and the prevention of sudden cardiac death: a report of the American College of Cardiology/American Heart Association task force on clinical practice guidelines and the Heart Rhythm Society. *Circulation* 2018;**138**:e91–220. Available from: <https://www.ahajournals.org/doi/10.1161/CIR.0000000000000549> [cited 2020 May 10]
  51. Bosman LP, Nielsen Gerlach CL, Cadrin-Tourigny J, Orgeron G, Tichnell C, Murray B *et al*. Comparing clinical performance of current implantable cardioverter-defibrillator implantation recommendations in arrhythmogenic right ventricular cardiomyopathy. *Europace* 2022;**24**:296–305.
  52. McKenna WJ, Asaad NA, Jacoby DL. Prediction of ventricular arrhythmia and sudden death in arrhythmogenic right ventricular cardiomyopathy. *Eur Heart J* 2019;**40**: 1859–61.
  53. Baudinaud P, Laredo M, Badenco N, Rouanet S, Waintraub X, Duthoit G *et al*. External validation of a risk prediction model for ventricular arrhythmias in arrhythmogenic right ventricular cardiomyopathy. *Can J Cardiol* 2021;**37**:1263–66.
  54. Zhang N, Wang C, Gasperetti A, Song Y, Niu H, Gu M *et al*. Validation of an arrhythmogenic right ventricular cardiomyopathy risk-prediction model in a Chinese cohort. *JCM* 2022;**11**:1973.
  55. Jordà P, Bosman LP, Gasperetti A, Mazzanti A, Gourraud JB, Davies B *et al*. Arrhythmic risk prediction in arrhythmogenic right ventricular cardiomyopathy: external validation of the arrhythmogenic right ventricular cardiomyopathy risk calculator. *Eur Heart J* 2022;**43**:3041–52.
  56. Arbelo E, Protonotarios A, Gimeno JR, Arbustini E, Barriales-Villa R, Basso C *et al*. 2023 ESC guidelines for the management of cardiomyopathies. *Eur Heart J* 2023;**44**: 3503–626.
  57. Gasperetti A, Russo AD, Busana M, Dessanai M, Pizzamiglio F, Saguner AM *et al*. Novel risk calculator performance in athletes with arrhythmogenic right ventricular cardiomyopathy. *Heart Rhythm* 2020;**17**:1251–59.
  58. Corrado D. Does sports activity enhance the risk of sudden death in adolescents and young adults? 2003;**42**:1959–63.
  59. Gasperetti A, James CA, Cerrone M, Delmar M, Calkins H, Duru F. Arrhythmogenic right ventricular cardiomyopathy and sports activity: from molecular pathways in diseased hearts to new insights into the athletic heart mimicry. *Eur Heart J* 2021;**42**: 1231–43.

60. James CA, Bhonsale A, Tichnell C, Murray B, Russell SD, Tandri H et al. Exercise increases age-related penetrance and arrhythmic risk in arrhythmogenic right ventricular dysplasia/cardiomyopathy-associated desmosomal mutation carriers. *J Am Coll Cardiol* 2013;**62**:1290–7.
61. Ruwald AC, Marcus F, Estes NAM, Link M, McNitt S, Polonsky B et al. Association of competitive and recreational sport participation with cardiac events in patients with arrhythmogenic right ventricular cardiomyopathy: results from the North American multidisciplinary study of arrhythmogenic right ventricular cardiomyopathy. *Eur Heart J* 2015;**36**:1735–43.
62. Wang W, Orgeron G, Tichnell C, Murray B, Crosson J, Monfredi O et al. Impact of exercise restriction on arrhythmic risk among patients with arrhythmogenic right ventricular cardiomyopathy. *J Am Heart Assoc* 2018;**7**:e008843, Available from: <https://www.ahajournals.org/doi/10.1161/JAHA.118.008843> [cited 2019 Oct 9].
63. Di Marco A, Brown PF, Bradley J, Nucifora G, Claver E, de Frutos F et al. Improved risk stratification for ventricular arrhythmias and sudden death in patients with non-ischemic dilated cardiomyopathy. *J Am Coll Cardiol* 2021;**77**:2890–905.
64. Patel AR, Kramer CM. Role of cardiac magnetic resonance in the diagnosis and prognosis of nonischemic cardiomyopathy. *JACC Cardiovasc Imaging* 2017;**10**:1180–93.
65. Hulten E, Agarwal V, Cahill M, Cole G, Vita T, Parrish S et al. Presence of late gadolinium enhancement by cardiac magnetic resonance among patients with suspected cardiac sarcoidosis is associated with adverse cardiovascular prognosis: a systematic review and meta-analysis. *Circ Cardiovasc Imaging* 2016;**9**:e005001, Available from: <https://www.ahajournals.org/doi/10.1161/CIRCIMAGING.116.005001> [cited 2023 Jan 27].
66. Lie ØH, Rootwelt-Norberg C, Deigaard LA, Leren IS, Stokke MK, Edvardsen T et al. Prediction of life-threatening ventricular arrhythmia in patients with arrhythmogenic cardiomyopathy. *JACC Cardiovasc Imaging* 2018;**11**:1377–86.
67. Anwer S, Guastafierro F, Erhart L, Costa S, Akdis D, Schuermann M et al. Right atrial strain and cardiovascular outcome in arrhythmogenic right ventricular cardiomyopathy. *Eur Heart J Cardiovasc Imaging* 2022;**23**:970–8.
68. Hosseini S, Erhart L, Anwer S, Heiniger PS, Winkler NE, Cimen T et al. Tissue Doppler echocardiography and outcome in arrhythmogenic right ventricular cardiomyopathy. *Int J Cardiol* 2022;**368**:86–93.
69. Malik N, Win S, James CA, Kutty S, Mukherjee M, Gilotra NA et al. Right ventricular strain predicts structural disease progression in patients with arrhythmogenic right ventricular cardiomyopathy. *JAHA* 2020;**9**:e015016.
70. Leren IS, Saberniak J, Haland TF, Edvardsen T, Haugaa KH. Combination of ECG and echocardiography for identification of arrhythmic events in early ARVC. *JACC Cardiovasc Imaging* 2017;**10**:503–13.
71. Piccini JP, Dalal D, Roguin A, Bomma C, Cheng A, Prakasa K et al. Predictors of appropriate implantable defibrillator therapies in patients with arrhythmogenic right ventricular dysplasia. *Heart Rhythm* 2005;**2**:1188–94.
72. Roguin A, Bomma CS, Nasir K, Tandri H, Tichnell C, James C et al. Implantable cardioverter-defibrillators in patients with arrhythmogenic right ventricular dysplasia/cardiomyopathy. *J Am Coll Cardiol* 2004;**43**:1843–52.
73. Maupain C, Badenco N, Pousset F, Waintraub X, Duthoit G, Chastre T et al. Risk stratification in arrhythmogenic right ventricular cardiomyopathy/dysplasia without an implantable cardioverter-defibrillator. *JACC Clin Electrophysiol* 2018;**4**:757–68.
74. Saguner AM, Medeiros-Domingo A, Schwyzer MA, On CJ, Haegeli LM, Wolber T et al. Usefulness of inducible ventricular tachycardia to predict long-term adverse outcomes in arrhythmogenic right ventricular cardiomyopathy. *Am J Cardiol* 2013;**111**:250–7.
75. Mast TP, James CA, Calkins H, Teske AJ, Tichnell C, Murray B et al. Evaluation of structural progression in arrhythmogenic right ventricular dysplasia/cardiomyopathy. *JAMA Cardiol* 2017;**2**:293.
76. Kalantarian S, Åström Aneq M, Svetlichnaya J, Sharma S, Vittinghoff E, Klein L et al. Long-term electrocardiographic and echocardiographic progression of arrhythmogenic right ventricular cardiomyopathy and their correlation with ventricular tachyarrhythmias. *Circ Heart Fail* 2021;**14**:e008121, Available from: <https://www.ahajournals.org/doi/10.1161/CIRCHEARTFAILURE.120.008121> [cited 2022 Nov 8].
77. Bariani R, Cipriani A, Rizzo S, Celeghin R, Bueno Marinas M, Giorgi B et al. 'Hot phase' clinical presentation in arrhythmogenic cardiomyopathy. *Europace* 2021;**23**:907–17.
78. Aquaro GD, De Luca A, Cappelletto C, Raimondi F, Bianco F, Botto N et al. Comparison of different prediction models for the indication of implanted cardioverter defibrillator in patients with arrhythmogenic right ventricular cardiomyopathy. *ESC Heart Fail* 2020;**7**:4080–8.
79. Corrado D, Link MS, Schwartz PJ. Implantable defibrillators in primary prevention of genetic arrhythmias. A shocking choice? *Eur Heart J* 2022;**43**:3029–40.
80. Bariani R, Cason M, Rigato I, Cipriani A, Celeghin R, De Gaspari M et al. Clinical profile and long-term follow-up of a cohort of patients with desmoplakin cardiomyopathy. *Heart Rhythm* 2022;**19**:1315–24.
81. Wang W, Murray B, Tichnell C, Gilotra NA, Zimmerman SL, Gasperetti A et al. Clinical characteristics and risk stratification of desmoplakin cardiomyopathy. *Europace* 2021;**24**:268–77.
82. Gigli M, Stolfo D, Graw SL, Merlo M, Gregorio C, Nee Chen S et al. Phenotypic expression, natural history, and risk stratification of cardiomyopathy caused by filamin C truncating variants. *Circulation* 2021;**144**:1600–11.
83. Hoorntje ET, Burns C, Marsili L, Corden B, Parikh VN, te Meerman GJ et al. Variant location is a novel risk factor for individuals with arrhythmogenic cardiomyopathy due to a desmoplakin (DSP) truncating variant. *Circ Genom Precis Med* 2022;**16**:e003672.
84. Nishiuchi S, Makiyama T, Aiba T, Nakajima K, Hirose S, Kohjitani H et al. Gene-Based risk stratification for cardiac disorders in LMNA mutation carriers. *Circ Cardiovasc Genet* 2017;**10**:e001603.
85. Vasaiwala SC, Finn C, Delpriore J, Leya F, Gagermeier J, Akar JG et al. Prospective study of cardiac sarcoid mimicking arrhythmogenic right ventricular dysplasia. *J Cardiovasc Electrophysiol* 2009;**20**:473–6.
86. Gasperetti A, Rossi VA, Chiodini A, Casella M, Costa S, Akdis D et al. Differentiating hereditary arrhythmogenic right ventricular cardiomyopathy from cardiac sarcoidosis fulfilling 2010 ARVC task force criteria. *Heart Rhythm* 2020;**21**:231–38.
87. Philips B, Madhavan S, James CA, te Riele ASJM, Murray B, Tichnell C et al. Arrhythmogenic right ventricular dysplasia/cardiomyopathy and cardiac sarcoidosis: distinguishing features when the diagnosis is unclear. *Circ Arrhythm Electrophysiol* 2014;**7**:230–6.
88. Calore C, Zorzi A, Sheikh N, Nese A, Facci M, Malhotra A et al. Electrocardiographic anterior T-wave inversion in athletes of different ethnicities: differential diagnosis between athlete's heart and cardiomyopathy. *Eur Heart J* 2016;**37**:2515–27.
89. Corrado D, van Tintelen JP, McKenna VJ, Hauer RN, Anastasakis A, Asimaki A et al. Arrhythmogenic right ventricular cardiomyopathy: evaluation of the current diagnostic criteria and differential diagnosis. *Eur Heart J* 2019;**41**:1414–29. Available from: [http://fdslive.oup.com/www.oup.com/pdf/production\\_in\\_progress.pdf](http://fdslive.oup.com/www.oup.com/pdf/production_in_progress.pdf) [cited 2021 Jan 18].
90. La Gerche A, Heidbuchel H. Helping patients to help themselves: informing individuals predisposed to arrhythmogenic cardiomyopathy. *Europace* 2020;**22**:1145–6.
91. Arnett DK, Blumenthal RS, Albert MA, Buroker AB, Goldberger ZD, Hahn EJ et al. ACC/AHA guideline on the primary prevention of cardiovascular disease. *J Am Coll Cardiol* 2019;**2019**:S073510971933877X.
92. Rolland T, Badenco N, Maupain C, Duthoit G, Waintraub X, Laredo M et al. Safety and efficacy of flecainide associated with beta-blockers in arrhythmogenic right ventricular cardiomyopathy. *Europace* 2021;**24**:278–84.
93. Liang E, Wu L, Fan S, Hu F, Zheng L, Liu S et al. Catheter ablation of arrhythmogenic right ventricular cardiomyopathy ventricular tachycardia: 18-year experience in 284 patients. *Europace* 2020;**22**:806–12.
94. Daimee UA, Assis FR, Murray B, Tichnell C, James CA, Calkins H et al. Clinical outcomes of catheter ablation of ventricular tachycardia in patients with arrhythmogenic right ventricular cardiomyopathy: insights from the Johns Hopkins ARVC program. *Heart Rhythm* 2021;**18**:1369–76.
95. Gandjbakhch E, Laredo M, Berruezo A, Gourraud JB, Sellal JM, Martins R et al. Outcomes after catheter ablation of ventricular tachycardia without implantable cardioverter-defibrillator in selected patients with arrhythmogenic right ventricular cardiomyopathy. *Europace* 2021;**23**:1428–36.
96. Belhassen B, Laredo M, Roudijk RVV, Peretto G, Zahavi G, Sen-Chowdhry S et al. The prevalence of left and right bundle branch block morphology ventricular tachycardia amongst patients with arrhythmogenic cardiomyopathy and sustained ventricular tachycardia: insights from the European Survey on Arrhythmogenic Cardiomyopathy. *Europace* 2022;**24**:285–95.
97. Gasperetti A, James CA, Chen L, Schenker N, Casella M, Kany S et al. Efficacy of catheter ablation for atrial arrhythmias in patients with arrhythmogenic right ventricular cardiomyopathy—a multicenter study. *JCM* 2021;**10**:4962.
98. Lin CY, Chung FP, Lin YJ, Chang SL, Lo LW, Hu YF et al. Clinical significance of J waves with respect to substrate characteristics and ablation outcomes in patients with arrhythmogenic right ventricular cardiomyopathy. *Europace* 2021;**23**:1418–27.
99. Monaco C, Pannone L, Bisignani A, Chierchia GB, La Meir M, De Asmundis C. Thoracoscopic hybrid ablation in a patient with drug refractory arrhythmogenic right ventricular cardiomyopathy combined with non-invasive electrocardiographic imaging: a multidisciplinary approach. *Europace* 2022;**24**:1808–1808.
100. Musunuru K, Hershberger RE, Day SM, Klindinst NJ, Landstrom AP, Parikh VN et al. Genetic testing for inherited cardiovascular diseases: a scientific statement from the American Heart Association. *Circ Genom Precis Med* 2020;**13**:e000067.
101. Stiles MK, Wilde AAM, Abrams DJ, Ackerman MJ, Albert CM, Behr ER et al. 2020 APHRS/HRS expert consensus statement on the investigation of decedents with sudden unexplained death and patients with sudden cardiac arrest, and of their families. *J Arrhythmia* 2021;**37**:481–534.
102. te Riele ASJM, James CA, Groeneweg JA, Sawant AC, Kammers K, Murray B et al. Approach to family screening in arrhythmogenic right ventricular dysplasia/cardiomyopathy. *Eur Heart J* 2016;**37**:755–63.
103. Sharma A, Bosman LP, Tichnell C, Nanavati J, Murray B, Nonyane BAS et al. Arrhythmogenic right ventricular cardiomyopathy prevalence and arrhythmic outcomes in at-risk family members: a systematic review and meta-analysis. *Circ Genom Precis Med* 2022;**15**:e003530, Available from: <https://www.ahajournals.org/doi/10.1161/CIRCGEN.121.003530> [cited 2023 Feb 5].