



OPEN ACCESS

Original research

# Long-term outcomes after endoscopic treatment for Barrett's neoplasia with radiofrequency ablation ± endoscopic resection: results from the national Dutch database in a 10-year period

Sanne van Munster,<sup>1,2</sup> Esther Nieuwenhuis,<sup>1</sup> Bas L A M Weusten,<sup>2,3</sup> Lorenza Alvarez Herrero,<sup>2</sup> Auke Bogte,<sup>3</sup> Alaa Alkhalaf,<sup>4</sup> B E Schenk,<sup>4</sup> Erik J Schoon,<sup>5</sup> Wouter Curvers,<sup>5</sup> Arjun D Koch,<sup>6</sup> Steffi Elisabeth Maria van de Ven ,<sup>6</sup> Pieter Jan Floris de Jonge,<sup>6</sup> Tjon J Tang,<sup>7</sup> Wouter B Nagengast,<sup>8</sup> Frans T M Peters,<sup>8</sup> Jessie Westerhof,<sup>8</sup> Martin H M G Houben,<sup>9</sup> Jacques JGHM Bergman ,<sup>1</sup> Roos E Pouw ,<sup>1</sup> Dutch Barrett Expert Centers

► Additional material is published online only. To view, please visit the journal online (<http://dx.doi.org/10.1136/gutjnl-2020-322615>).

For numbered affiliations see end of article.

## Correspondence to

Dr Jacques JGHM Bergman, Gastroenterology and hepatology, Amsterdam UMC Locatie AMC, Amsterdam 1105 AZ, North Holland, The Netherlands; [j.j.bergman@amc.nl](mailto:j.j.bergman@amc.nl)

JJB and REP are joint senior authors.

United European Gastroenterology Week 2019, oral presentation, October 2019. Digestive Disease Week 2019, oral presentation, May 2019. European Society for Gastrointestinal Endoscopy Days, plenary presentation, April 2020.

Received 15 September 2020  
Revised 2 March 2021  
Accepted 8 March 2021  
Published Online First  
22 March 2021



© Author(s) (or their employer(s)) 2022. Re-use permitted under CC BY. Published by BMJ.

**To cite:** van Munster S, Nieuwenhuis E, Weusten BLAM, et al. *Gut* 2022;**71**:265–276.

## ABSTRACT

**Objective** Radiofrequency ablation (RFA)±endoscopic resection (ER) is the preferred treatment for early neoplasia in Barrett's oesophagus (BE). We aimed to report short-term and long-term outcomes for all 1384 patients treated in the Netherlands (NL) from 2008 to 2018, with uniform treatment and follow-up (FU) in a centralised setting.

**Design** Endoscopic therapy for early BE neoplasia in NL is centralised in nine expert centres with specifically trained endoscopists and pathologists that adhere to a joint protocol. Prospectively collected data are registered in a uniform database. Patients with low/high-grade dysplasia or low-risk cancer, were treated by ER of visible lesions followed by trimonthly RFA sessions of any residual BE until complete eradication of BE (CE-BE). Patients with ER alone were not included.

**Results** After ER (62% of cases; 43% low-risk cancers) and median 1 circumferential and 2 focal RFA (p25–p75 0–1; 1–2) per patient, CE-BE was achieved in 94% (1270/1348). Adverse events occurred in 21% (268/1386), most commonly oesophageal stenosis (15%), all were managed endoscopically. A total of 1154 patients with CE-BE were analysed for long-term outcomes. During median 43 months (22–69) and 4 endoscopies (1–5), 38 patients developed dysplastic recurrence (3%, annual recurrence risk 1%), all were detected as endoscopically visible abnormalities. Random biopsies from a normal appearing cardia showed intestinal metaplasia (IM) in 14% and neoplasia in 0%. A finding of IM in the cardia was reproduced during further FU in only 33%, none progressed to neoplasia. Frequent FU visits in the first year of FU were not associated with recurrence risk.

**Conclusion** In a setting of centralised care, RFA±ER is effective for eradication of Barrett's related neoplasia and has remarkably low rates of dysplastic recurrence. Our data support more lenient FU intervals, with emphasis on careful endoscopic inspection. Random biopsies from neosquamous epithelium and cardia are of questionable value.

## Significance of this study

### What is already known on this subject?

► Endoscopic treatment by means of endoscopic resection (ER) and radiofrequency ablation (RFA) is safe and effective for Barrett's oesophagus-related neoplasia.

### What are the new findings?

► After successful RFA treatment, the long-term risk for dysplastic recurrence is remarkably low: 1% per person year. All recurrences are detected as endoscopic abnormalities and not through random biopsies. There was no association between 3-monthly endoscopies in year 1 and improved patient outcomes. We also found no association between intestinal metaplasia in a normal appearing cardia and future dysplastic recurrence.

### How might it impact on clinical practice in the foreseeable future?

► We suggest two important recommendations for post-treatment surveillance: (1) there is no need for frequent 3-monthly endoscopies during the first year after treatment; and (2) careful inspection is the most important aspect of follow-up endoscopies and random biopsies may be abandoned.

**Netherlands trial register number** NL7039.

## INTRODUCTION

Endoscopic eradication treatment (EET) is an established treatment approach for eradicating Barrett's oesophagus (BE) with early neoplasia. EET is generally a multimodal treatment consisting of endoscopic resection (ER) in case of visible lesions, followed by eradication of the residual flat BE

segment, to minimise the risk of metachronous dysplasia. For the latter, radiofrequency ablation (RFA) is the most commonly used technique. Current clinical guidelines unanimously recommend this effective and safe two-step approach as standard of care.<sup>1–3</sup>

Landmark studies consistently report excellent efficacy, with complete eradication of all neoplasia as well as complete eradication of all BE in 74%–98% of patients.<sup>4–7</sup> However, the long-term durability remains poorly characterised. Some studies have reported long-term outcomes, but were limited by small sample size, heterogeneous treatment and follow-up (FU) protocols, and/or different definitions for recurrence. Consequently, reported rates for dysplastic recurrence vary widely from 1% to 20% per person year.<sup>4 5 8–13</sup>

EET for BE related dysplasia and early cancer in the Netherlands is uniquely organised, with centralisation of care in Barrett Expert Centers (BECs). All patients are referred to a BEC, where care is provided by experienced endoscopists and pathologists, all of whom participated in joint training programmes. All centres adhere to a joint treatment and FU protocol and difficult cases are discussed in regular interdisciplinary meetings. Data on treatment and outcomes of all patients treated in the BECs are registered in a uniform database. A joint research network has been established for studies in the field of pathology,<sup>14–17</sup> imaging,<sup>18–20</sup> and treatment<sup>4 5 9 21–26</sup> for early BE neoplasia. The aim of the current study was to report the short-term and long-term outcomes for all patients treated for BE with dysplasia and/or early cancer in the Netherlands, according to a uniform EET protocol including RFA.

## METHODS

The BEC registry is an ongoing, multicentre initiative designed to establish outcomes of patients undergoing EET for early BE neoplasia in a setting of centralised care (Netherlands Trial Register, NL7039, online supplemental table S1). The registry includes data for all patients who underwent endoscopic treatment for early BE neoplasia in the Netherlands since 2008, when RFA was introduced into regular clinical practice. The Dutch patient federation for cancer of the digestive tract ('Stichting voor patiënten met kanker aan het spijsverteringskanaal') was involved in the design, reporting and dissemination plans of our study.

### Study population

For the current study, all patients with BE and confirmed low-grade dysplasia (LGD), high-grade dysplasia (HGD) or low-risk oesophageal adenocarcinoma (LR EAC) (mucosal or superficial submucosal (sm1) cancer, well to moderately differentiated, without lymphovascular invasion, no tumour invasion (R0) in the vertical resection margin), who underwent at least 1 RFA treatment between 1 January 2008 and 31 December 2018, were included in the 'RFA treatment cohort' (figure 1). Non-dysplastic Barrett's oesophagus (NDBE) is not an accepted indication for RFA in our country and these patients were not included in our cohort.

The 'RFA durability cohort' (figure 1) was defined as all patients with successful EET, defined as complete endoscopic eradication of BE (CE-BE), with at least 1-year FU at the moment of data collection.

We excluded 255 cases (figure 1) with high-risk EAC in their ER specimen (ie, deep submucosal invasion (sm2–3), poor differentiation, lymphovascular invasion or invasion of cancer (R1) in the vertical resection margin).

We also excluded cases (n=94; figure 1) in whom—after the ER—no further attempts were at CE-BE for various reasons, mainly limited life expectancy.<sup>27</sup> Finally, we excluded 224 patients (figure 1) in whom other techniques than RFA were used to achieve CE-BE, either stepwise radical endoscopic resection (SRER; n=149), hybrid-APC (n=43), endorotor (n=20), cryoballoon ablation (n=9) or other techniques (n=3).

Part of the patients included in the current study have been treated in context of a prospective clinical trial and were therefore mentioned in prior published work.<sup>4 5 9 24 28 29</sup>

### Treatment protocol

Patients who were referred with histologically confirmed LGD, HGD or LR-EAC underwent a dedicated imaging endoscopy using high-definition endoscopy. The oesophagus was carefully inspected with documentation of the Prague C&M criteria,<sup>30</sup> presence of visible lesions or other abnormalities such as oesophagitis or stenosis. Visible lesions were removed with ER, per default using cap-based ER and endoscopic submucosal dissection was used for special indications, that is, bulky lesions that could not be sucked in the ER cap, or lesions with a suspicion of submucosal invasion. Patients with limited life expectancy underwent ER monotherapy and no RFA, with surveillance of the remaining BE segment. For all other patients, RFA (Barrx system, Medtronic, Minneapolis, Minnesota, USA) was performed at 3–4 month intervals to eradicate flat BE as described previously<sup>4</sup> (figure 2). Touch-up treatment for any residual flat, non-neoplastic BE areas that persisted after RFA treatment (including at least 1 focal RFA of the GE-junction) was allowed, using ER (for areas >5 mm) or a maximum of two APC sessions for areas <5 mm. If biopsies from the GE-junction showed persisting IM after RFA, one additional focal RFA of the GE junction was allowed. Residual BE could also be kept under endoscopic surveillance, at the discretion of the endoscopist.

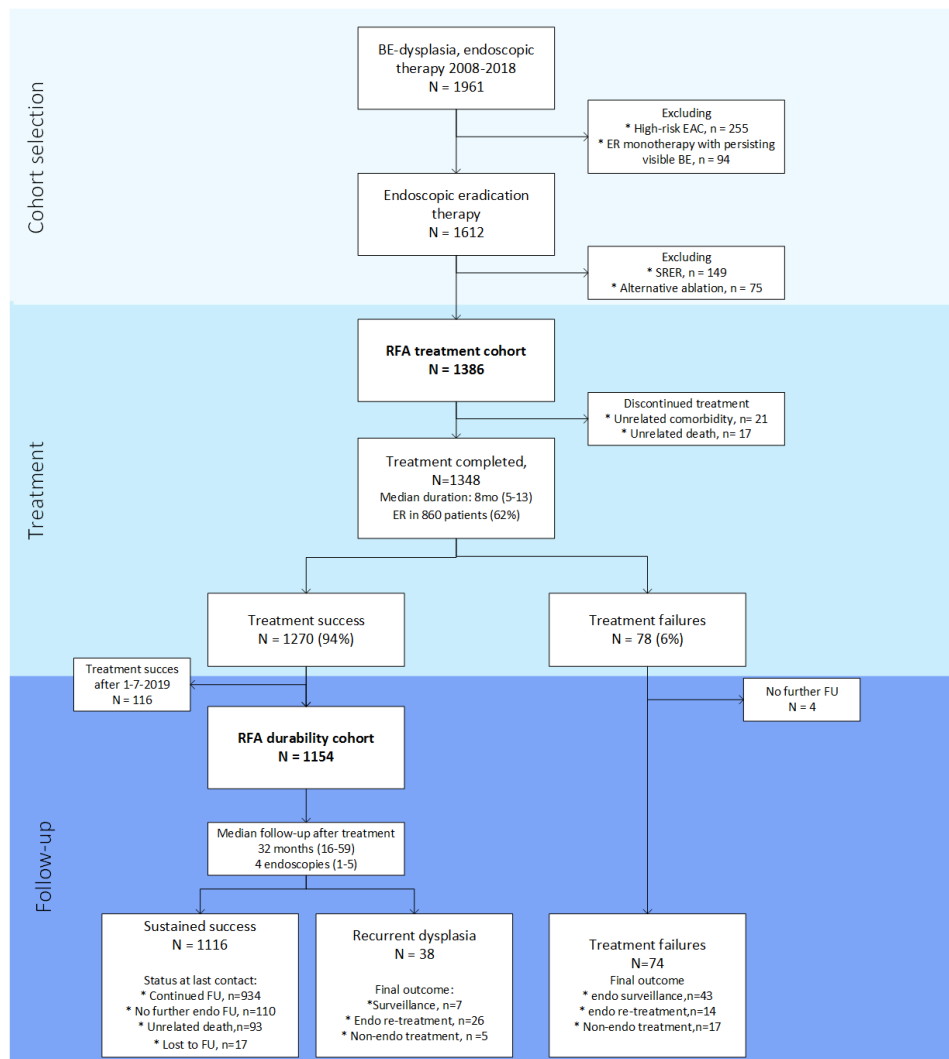
When complete endoscopic eradication of all visible BE was achieved, the oesophagus was sampled to confirm eradication of IM. Initially, biopsies were obtained from neosquamous epithelium (NSE) over the length of the initial BE segment (4 quadrants every 2 cm) and from the cardia (ie, <5 mm distally from the neosquamocolumnar junction). From 2013, the NSE biopsies were abandoned due to low diagnostic yield and emerging evidence that adequate endoscopic inspection provided more clinically relevant information than random NSE biopsies.<sup>31</sup>

### Follow-up protocol

Endoscopic FU consisted of high-definition endoscopy with optical chromoendoscopy, with changing intervals and sampling methods over time. Initially, FU endoscopies were performed every 3 months in the first year, followed by annual endoscopies in years 2–5, and then one endoscopy in every 2–3 years. However, from 2015, we abandoned the quarterly endoscopies in the first year, due to low yield of clinically relevant findings.

From 2008 till 2013, 4 quadrant random biopsies were obtained from the entire NSE at 2 cm intervals and from the cardia during every FU endoscopy. In 2013, we abandoned the NSE biopsies and in 2016 we abandoned the random biopsies from the cardia, due to low yield of clinically relevant findings. Residual BE including an irregular Z-line, visible lesions, or other abnormalities always remained an indication for histological sampling.

Treatment for recurrent non-dysplastic BE was per endoscopist's discretion and based on the estimated risk for progression,



**Figure 1** Patient flow. BE, Barrett's oesophagus; EAC, oesophageal adenocarcinoma; ER, endoscopic resection; FU, follow-up; RFA, radiofrequency ablation; SRRER, stepwise radical endoscopic resection.

and a patient's age and comorbidity. Recurrent (or persisting) BE islands were treated with re-APC.

During treatment and FU, all patients were prescribed high-dose proton-pump inhibitor therapy twice daily, supplemented with sucralfate suspension after every meal for 2 weeks after each therapeutic endoscopy.

### Histological analysis

Histological evaluation of all ER specimens and biopsies obtained at baseline, during treatment and at least the first FU endoscopy was performed by a dedicated BE expert pathologist. The training of the BEC pathologists has been described in detail elsewhere.<sup>15 17 32</sup>

### Endpoints RFA treatment cohort

Primary effectiveness endpoint:

- Proportion of patients with CE-BE at the first endoscopy after the treatment phase. A patient was considered a failure for this endpoint if residual endoscopically visible BE persisted after completing the treatment protocol including touch-up treatment, and/or if dysplasia persisted, including dysplasia in cardia biopsies without visible BE. IM in cardia biopsies in the absence of endoscopically visible BE was not

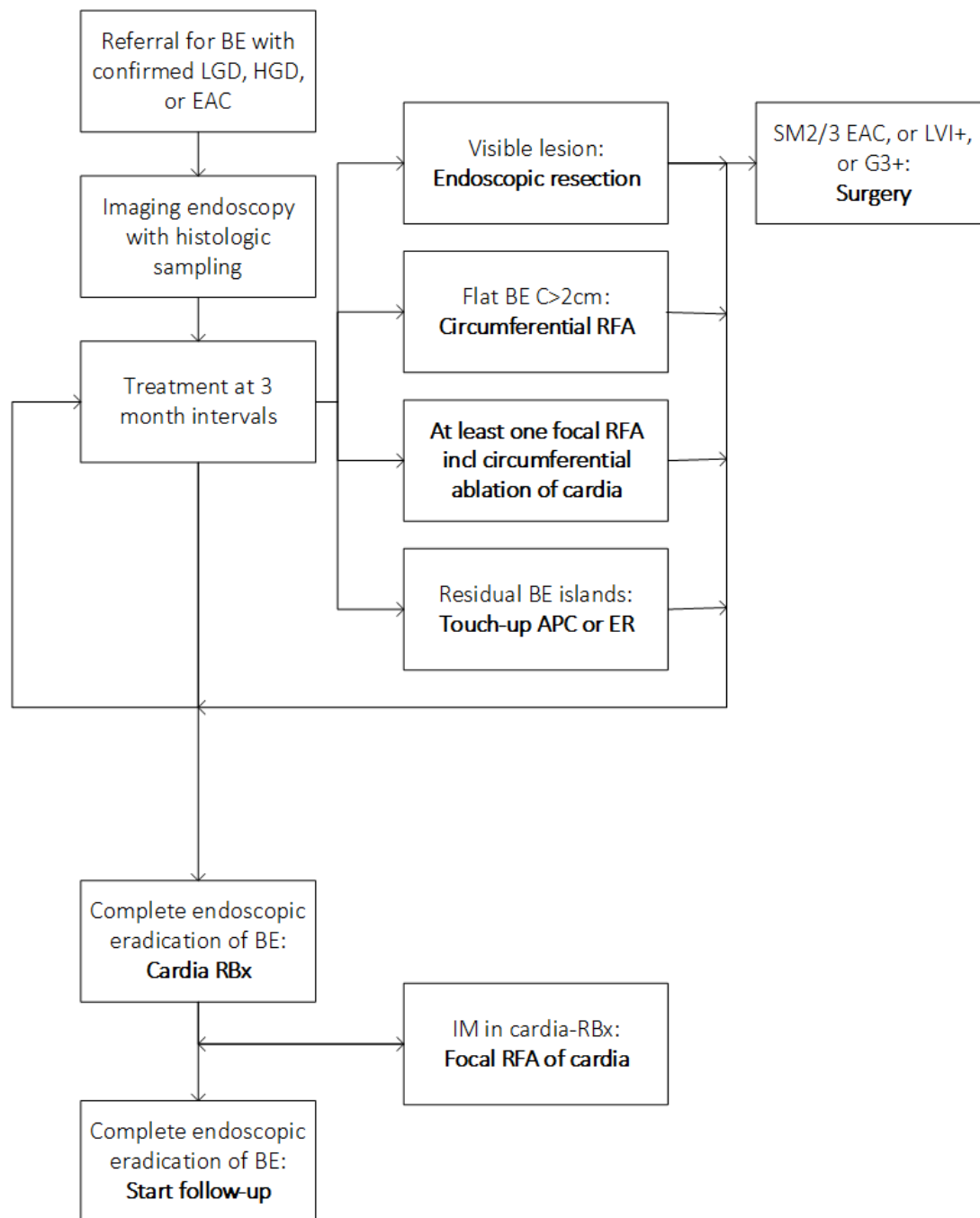
considered a treatment failure.<sup>4</sup> All patients in the treatment cohort who completed the treatment protocol were included for this analysis ('per protocol population'). We divided treatment failures into two groups: (a) real treatment failures in whom >20% of the initial BE persisted and/or in whom neoplasia persisted; and (b) patients with >80% of the initial BE removed and complete eradication of neoplasia, in whom an elective decision was made to withhold further treatment. Secondary effectiveness endpoints:

- Differences in outcomes over time.
- Progression to advanced EAC that exceeded boundaries for curative endoscopic treatment.
- Complications (oesophageal stenosis, bleeding, perforation, death).

### Endpoints RFA durability cohort

Primary durability endpoint:

- Proportion of patients with sustained eradication of LGD, HGD and EAC during long-term endoscopic FU. A patient was considered a failure for this endpoint if recurrent LGD, HGD or EAC was detected in the oesophagus or cardia, or if lymph node or distant metastasis from EAC were found during FU. Failure for this endpoint was categorised into



**Figure 2** Treatment protocol. Treatment protocol followed by all Barrett Expert Centers in the Netherlands. APC, argon plasma coagulation; BE, Barrett's oesophagus; ER, endoscopic resection; EAC, esophageal adenocarcinoma; HGD, high-grade dysplasia; LGD, low-grade dysplasia; IM, intestinal metaplasia; RFA, radiofrequency ablation.

three groups according to the severity of recurrent disease: (a) LGD in a normal appearing cardia without recurrent BE; (b) recurrent BE with LGD/HGD/EAC amenable for curative endoscopic treatment; and (c) advanced EAC that exceeded boundaries for curative endoscopic treatment.

Secondary durability endpoints:

1. Sustained eradication of HGD and EAC (recurrent LGD was considered as success).
2. Progression to advanced EAC that exceeded boundaries for curative endoscopic treatment.
3. Recurrence of non-dysplastic BE.
4. Diagnostic yield for FU endoscopies and random biopsies.

5. Association between frequent endoscopies in the first FU year and recurrence.
6. Association between IM in the cardia and recurrence.
7. Unrelated mortality rates and causes of death.

Detailed definitions for our endpoints are provided in online supplemental table S2.

#### Data collection

The BEC registry, a joint database that includes all treated patients in the Netherlands, was initiated in 2016. Patients were identified from the prospective annual registrations of

treatment outcomes, prospective databases and/or patient lists at each centre. All relevant data regarding baseline characteristics, imaging, treatment and FU were retrospectively recorded from the endoscopy and pathology reports in the electronic patient files that were kept in each individual centre, and which were standardised from the beginning of the joint treatment protocol in 2008. All data were coded and merged in a joint, online database (Castor EDC), with a separately kept patient identification file.

The BEC registry was merged with the non-public microdata from Statistics Netherlands for survival outcomes, including date and cause of death.

### Data management

Medical students in the final year of their degree reviewed all endoscopy and pathology reports for data collection under frequent supervision and after standardised training in the subject and the database. A second, independent assessment by a dedicated research fellow (MD) was done for a random 50% of the patient population. Additionally, all patients meeting primary or secondary endpoints had source data verified by a research fellow (MD) and were discussed during meetings with the study team (SvM, EN, RP, JB). All fields were examined for missing data, strange values or outliers, and these were completed or corrected where possible. All authors had access to the study data and reviewed and approved the final manuscript.

### Statistics

Results of the descriptive analyses are presented as counts and proportions for categorical variables and median and ranges between the 25th and 75th percentile, or mean and SD for continuous variables with skewed or normal distribution, respectively. CIs (2.5th; 97.5th percentile) were obtained using bootstrapping. Categorical variables were compared using a  $X^2$  test or Fisher's exact test, and continuous variables with a Student's t-test or Mann-Whitney U test.

The durability of eradication of dysplasia was estimated with the use of the Kaplan-Meier method. The HR for recurrent dysplasia was estimated with the use of a Cox proportional hazards model. Data for patients were censored at the last endoscopic FU. To assess causal associations, cox proportional hazard models were adjusted for age, gender, length of BE, worst histology at baseline, presence of a reflux stenosis, and presence of incident lesions during RFA treatment.

Median overall survival was estimated with use of the Kaplan-Meier. Patients were censored at the date patient was last known to be alive. Recurrence and survival were combined with the use of a cumulative incidence curve. Statistical analysis were performed using Rstudio for windows (V.3.6.1).

## RESULTS

### Baseline characteristics

A total of 1386 patients underwent at least one RFA treatment between 2008 and 2018 and were analysed for safety and effectiveness ('RFA treatment cohort') (figure 1). Patient characteristics are shown in table 1.

### Treatment cohort outcomes

CE-BE (ie, a complete endoscopic eradication of all visible BE) at the end of the treatment phase was achieved in 94% of patients who completed the treatment protocol (95% CI 93 to 95) (1270/1348). This proportion was constant over time

**Table 1** Baseline characteristics

	RFA treatment cohort N=1386	RFA durability cohort N=1154
<b>Demographics</b>		
Male gender, n (%)	1122 (81)	947 (82)
Age, years, mean ( $\pm$ SD)	65 (10)	64 (9)
BMI, kg/m <sup>2</sup> , mean ( $\pm$ SD)	28 (4)	28 (4)
<b>BE history</b>		
Prior fundoplication, n (%)	23 (2)	21 (2)
Surveillance history, n (%)	892 (64)	759 (66)
In years, median (P25–P75)	4 (2–8)	3 (0–8)
<b>Imaging</b>		
Hiatal hernia, n (%)	1321 (95)	1099 (95)
In cm, mean ( $\pm$ SD)	3 (2–4)	3 (2–4)
Oesophagitis, n (%)	49 (4)	38 (3)
Stenosis, n (%)	49 (4)	42 (4)
Circumferential BE, median (P25–P75)	2 (1–6)	2 (0–5)
Maximum BE, median (P25–P75)	5 (3–8)	4 (3–7)
Visible lesion, n (%)	860 (62)	718 (62)
<b>Primary Paris type, n (%)</b>		
0-Ip/s	81 (11)	63 (9)
0-IIa	490 (69)	419 (58)
0-IIb	111 (16)	90 (13)
0-IIc	29 (4)	22 (3)
	149 missing	124 missing
Size, mm, median (P25–P75)	15 (10–20)	15 (10–20)
<b>Pathology</b>		
<b>Worst overall histology, n (%)</b>		
LGD	375 (27)	306 (27)
HGD	422 (30)	362 (31)
LR-EAC	589 (43)	486 (42)
<b>Treatment</b>		
<b>Endoscopic resection, n (%)</b>		
Cap-based ER, n (%)	839 (61)	688 (60)
ESD, n (%)	31 (2)	20 (2)
<b>RFA treatment</b>		
C-RFA, median (P25–P75)	1 (0–1)	1 (0–1)
F-RFA, median (P25–P75)	2 (1–2)	2 (1–2)
Total RFA, median (P25–P75)	2 (1–3)	2 (1–3)
Patients with >2 C-RFA, n (%)	9 (0.6)	6 (0.5)
Patients with >4 total RFA, n (%)	57 (4)	44 (4)
Touch-up APC, n (%)	519 (37)	462 (40)
Touch-up ER, n (%)	80 (6)	74 (6)
ER for incident lesion, n (%)	69 (5)	44 (4)

APC, argon plasma coagulation; BE, Barrett's oesophagus; BMI, body mass index; C-RFA, circumferential RFA; EAC, esophageal adenocarcinoma; EMR, endoscopic mucosal resection; ER, endoscopic resection; ESD, endoscopic submucosal dissection; F-RFA, focal RFA; GEJ, gastroesophageal junction; HGD, high-grade dysplasia; LGD, low-grade dysplasia; LR-EAC, Low-risk esophageal adenocarcinoma.

(online supplemental figure S1). Of the 1270 patients with CE-BE, 85 (7%) had persisting IM in biopsies obtained from a normal appearing cardia.

In 62% of patients, a visible lesion was removed with ER before RFA. This proportion differed along with the worst histological diagnosis at baseline: 17% of patients with LGD underwent baseline ER (62/375), compared with 53% of HGD patients (225/422) and 99% of patients with EAC (583/589). Six patients had EAC in a random biopsy, without visible lesions,

and underwent RFA monotherapy, all were treated before 2015. For HGD patients, this proportion showed a significant increase over the years (47% before 2013 and 59% thereafter,  $p<0.01$ ; online supplemental figure S1).

A total of 68 (5%) patients were noted to have a neoplastic lesion after RFA was started ('incident lesion') that was removed with ER and showed HGD ( $n=26$ ) or EAC ( $n=42$ ). Baseline histology for these patients was HGD ( $n=27$ ), or EAC ( $n=41$ ). The incident lesion harboured a worse diagnosis than at baseline in 20 patients (20/1386; 1%).

Treatment consisted of median 1 circumferential (p25–p75 0–1) and two focal (p25–p75 1–2) RFA treatments per patient and was followed by touch-up ER (80/1386; 6%) and/or APC (519/1386; 37%) for residual BE areas.

### Treatment failures

Seventy-eight patients (78/1348; 6%) had remaining Barrett's mucosa and/or dysplasia, and were defined as failures after median 10 (p25–p75 5–22) months of treatment. In 34 failures (34/78; 44%), over 80% of the initial BE had been removed, and an elective decision was made to withhold further treatment. These patients had median C1M2 residual BE with non-dysplastic IM ( $n=21$ ) or LGD ( $n=13$ ) (online supplemental table S3). During mean surveillance of 49 months with 3 endoscopies per patient after treatment was stopped, 6 (18%) developed a visible lesion. All were detected at early stages and were curatively treated endoscopically with ER for HGD ( $n=4$ ) or mucosal EAC ( $n=2$ ).

The other 44 failures (44/78; 56%) were real treatment failures in whom CE-BE could not be achieved, due to poor squamous regeneration ( $n=27$ ) or progression to disease that exceeded boundaries for curative endoscopic treatment ( $n=17$ ). These patients had median C5M7 residual BE with non-dysplastic IM ( $n=16$ ), LGD ( $n=8$ ), HGD ( $n=11$ ), or EAC ( $n=9$ ) (online supplemental table S3). The 17 patients (17/1386; 1%) who progressed to disease that exceeded the curative indication of endoscopic treatment developed high-risk EAC ( $n=7$ , all diagnosed after ER for an incident lesion) or new visible abnormalities that could not be removed with ER due to multifocality ( $n=9$ ) or a persisting visible lesion that could not be removed with ER due to post-treatment fibrosis ( $n=1$ ). Nine patients underwent esophagectomy and remained free of disease up to the moment of data collection ( $n=7$ ) or died due to unrelated causes ( $n=2$ ). The other eight patients were unfit for major surgery and had EAC-related death ( $n=4$ ); unrelated death ( $n=2$ ); or were alive at the moment of data collection ( $n=2$ ). Twelve of these 17 cases were identified at baseline as complicated cases due to BE segment >10 cm, severe reflux oesophagitis, and/or multifocal neoplasia (online supplemental table S4).

The majority of the real treatment failures was identified early in the treatment phase. The median time between first treatment and decision to stop further treatment was 8 months. In two-thirds (29/44, 67%), treatment was stopped within the first 12 months, in 10 (23%) between 12 and 18 months, and in 4 (9%) after 18 months.

### Complications

Oesophageal stenosis requiring endoscopic dilatation was the most common complication and occurred in 15% of patients (95% CI 13 to 17) (210/1386) (table 2). In 170 cases (170/1386; 12%), stenosis was resolved after 5 or less dilatations (median 2), but 40 patients (40/1386; 3%) developed a severe stenosis that required median 9 endoscopic dilatations. Additional incision

**Table 2** Safety outcomes

	Total patients N=1386
At least 1 complication, n (%) (95% CI)	268 (21 (19 to 23))
<b>Stenosis</b>	
Incidence, n (%) (95% CI)	210 (15 (13 to 17))
Severity*, n (%) (95% CI)	
Mild/moderate	170 (12 (11 to 14))
Severe	40 (3 (2 to 4))
<b>Post-procedural bleed</b>	
Incidence, n (%) (95% CI)	52 (4 (3 to 5))
Severity*, n (%) (95% CI)	
Mild	19 (1 (1 to 2))
Moderate	25 (2 (1 to 3))
Severe	8 (0.5 (0.3 to 1))
Cause, n	
ER	29
RFA	23
<b>Perforation</b>	
Incidence, n (%) (95% CI)	11 (0.8 (0.4 to 1))
Severity*, n (%) (95% CI)	
Mild	5 (0.4 (0.1 to 0.9))
Moderate	6 (0.4 (0.2 to 1))
Severe	–
Cause, n	
ER	6
Endoscopic dilatation	5

\*Adverse events were graded as 'mild' (unplanned hospital admission, hospitalisation <3 days, haemoglobin drop <3 g, no transfusion), 'moderate' (4–10 days hospitalisation, <4 units blood transfusion, repeat endoscopic intervention, radiological intervention), 'severe' (hospitalisation >10 days, intensive care unit (ICU) admission, need for surgery, >4 units blood transfusion, in the case of stenosis: >5 dilatations, stent placement or incision therapy) or 'fatal' (death attributable to procedure <30 days or longer with continuous hospitalisation). See online supplemental table S2 for more definitions.

ER, Endoscopic resection; RFA, Radiofrequency ablation.

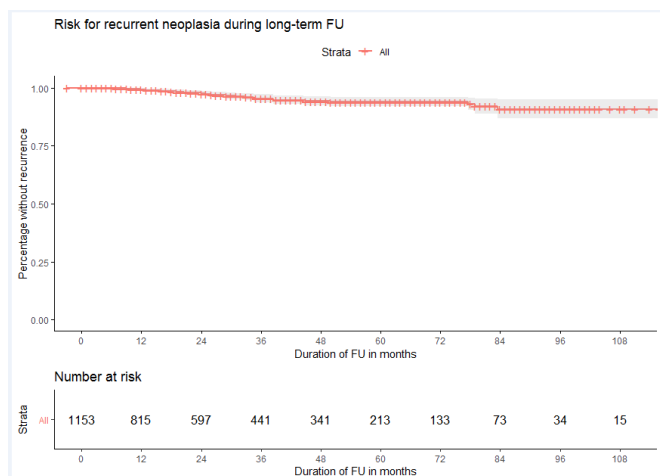
therapy was required in 10 patients and esophageal stent placement in 4. All stenosis were managed endoscopically. Most severe stenosis occurred after extensive ER followed by RFA, but 12 patients (12/1386; 0.9%) developed a severe stenosis after a single circumferential RFA. Increasing BE length, prior ER and more extensive prior ER were risk factors for stenosis (online supplemental table S5).

The bleeding rate for RFA was 2% per procedure (95% CI 1 to 2) or 4% per patient (95% CI 3 to 5). No perforations occurred after RFA. Perforations occurred in 11 patients (1% (95% CI 0 to 1)) after ER ( $n=6$ ) or endoscopic dilatation for oesophageal stenosis ( $n=5$ ), all were managed conservatively or with endoscopic intervention.

There were no procedure related deaths.

### Durability cohort outcomes

One thousand one hundred fifty-four patients who had a complete eradication of BE (CE-BE) on RFA, were analysed for long-term outcomes. The median duration of endoscopic FU (ie, until the last FU endoscopy) was 43 (p25–p75 22–69, minimum 8) months after baseline and 32 (16–59) months after the last treatment (total time at risk 3706 person years) with median 4 (1–5) FU endoscopies per patient. A substantial number of patients had long-term FU: 317 patients had FU  $\geq 5$  years and 148 patients had FU  $\geq 7$  years after achieving CE-BE. The



**Figure 3** Long-term outcomes. Kaplan-Meier curve for the risk for recurrent dysplasia during follow-up (FU) based on the 'RFA durability cohort'. A patient was considered a failure for the endpoint if recurrent dysplasia was found, irrespective of whether curative endoscopic retreatment was performed. Patients were censored at the last FU endoscopy at the moment of data collection.

majority of patients was still under endoscopic surveillance at the moment of data collection (n=934). In 203 patients, endoscopic FU was stopped due to age, comorbidity or death, median 37 months after the last treatment. Seventeen patients (1%) were

lost to FU after mean 34 months of endoscopic surveillance with median 3 FU endoscopies.

During FU, recurrence of LGD, HGD or EAC occurred in 38 (38/1154; 3%) patients (annual risk 1.0% (95% CI 0.8 to 1.4)) (figure 3). A total of 24 patients had recurrent HGD/EAC (24/1154; 2%; annual risk 0.7 (95% CI 0.4 to 1.0)).

Recurrences were categorised in three grades: (1) LGD in a normal appearing cardia (9/38; 24%); (2) recurrent BE with dysplasia/EAC (24/38; 63%); and (3) advanced EAC that exceeded boundaries for curative endoscopic treatment (5/38; 13%) (table 3, online supplemental figure S2). Patients in category 1 underwent treatment (n=1) or surveillance without progression (n=8). All patients in category 2 underwent successful endoscopic treatment and CE-BE was re-established in all. Of the five patients with progression to advanced EAC (5/1154, 0.4%, annual risk 0.1% (95% CI 0.1 to 0.3)), four patients underwent surgery (T1bN1; T1bN1, T1N2, T1bN0), of which three patients later died from metastasised disease. A single patient had metastasised disease without intraluminal recurrence at the moment recurrence was diagnosed. Three of the five patients were identified at baseline as complicated cases with BE segment >10 cm, severe reflux oesophagitis and/or multifocal neoplasia (online supplemental table S4). In total, 8 patients (8/1154; 0.7%) had a worse disease stage during FU than at baseline staging.

Recurrence occurred median 31 months<sup>19–43</sup> after CE-BE (figure 3). The majority of recurrences developed in the tubular oesophagus (24/38; 62%); either in short segment BE (median

**Table 3** Recurrences

	LGD at GEJ N=9	Recurrent dysplasia/EAC N=24	Advanced EAC N=5
<b>Initial BE</b>			
Length, median (P25–P75)	C6M7 (4–9; 5–9)	C3M5 (1–7; 3–9)	C8M10 (5–11; 7–12)
<b>Histology, n (%)</b>			
LGD	1 (11)	3 (13)	–
HGD	6 (67)	5 (21)	2 (40)
LR-EAC	2 (22)	16 (67)	3 (60)
Severe reflux, n (%)	3 (33)	1 (4)	3 (60)
<b>Treatment</b>			
Baseline ER, n (%)	5 (56)	19 (79)	4 (80)
N C-RFA, median (P25–P75)	1 (1–2)	1 (0–1)	1 (1–2)
N F-RFA, median (P25–P75)	2 (2–3)	2 (1–2)	2 (1–3)
<b>FU</b>			
Prior IM in cardia, n (%)	2 (22)	1 (4)	0
N FU endoscopies before recurrence, median (P25–P75)	3 (1–5)	4 (2–5)	2 (2–3)
Months between last treatment and recurrence, median (P25–P75)	31 (17–45)	31 (23–47)	25 (18–39)
Months between last FU endoscopy and recurrence, median (P25–P75)	11 (9–13)	12 (10–15)	12 (7–17)
<b>Recurrence</b>			
<b>Location, n (%)</b>			
Cardia	9 (100)	4 (17)	1 (25)*
Tubular	–	20 (83)	3 (75)
Detection	Cardia RBx	Visible BE a/o lesion	Visible BE a/o lesion*
<b>Histology, n (%)</b>			
LGD	9 (100)	5 (21)	
HGD		7 (29)†	
LR-EAC		12 (50)†	
HR-EAC			5 (100)†

\*A single patient developed symptomatic, metastasized disease without abnormalities in the oesophagus.

†A worst histological grade during FU as compared with baseline, was found in eight patients in total. Three patients with baseline LGD who developed HGD (n=1) or LR-EAC (n=2) and in all five patients who developed HR-EAC during FU.

BE, Barrett's oesophagus; C-RFA, circumferential RFA; EAC, oesophageal adenocarcinoma; ER, endoscopic resection; F-RFA, focal RFA; FU, follow-up; HGD, high-grade dysplasia; IM, intestinal metaplasia; LGD, low-grade dysplasia; RBx, Random biopsies.

C1M2) or in small BE islands, always within the extent of the initial BE segment (online supplemental figure S3). The remaining 38% (14/38) occurred at the cardia. All recurrences in categories 2 and 3 were detected as endoscopic abnormalities (recurrent BE and/or visible lesion). No recurrent HGD/EAC was diagnosed solely on random biopsies.

#### Recurrent non-dysplastic BE

During FU, recurrent NDBE occurred in 109 patients (9% (8–11)), the majority of which had diminutive BE islands (84/1154; 7%). Twenty-seven patients (27/1154; 2%) developed recurrent BE tongues of limited size (median C0M2), in all cases of lesser extent than the initial BE (online supplemental table S6). One patient (1/109; 1%) progressed to LGD in a recurrent C1M2 BE. No patient with recurrent BE progressed to HGD/EAC during a median FU of 24 months with median 2 endoscopies.

Recurrent BE tongues were detected after median 38 months, whereas BE islands were detected significantly shortly after treatment (median 15 months,  $P=0.02$ ). The annual risk for BE islands was 3% (2–4) in years 1–2 and 1% (1–1) in the years thereafter. The risk for recurrent BE tongues was 0.4% (95% CI 0.2% to 0.8%) in the first 2 years and 1% (95% CI 1% to 2%) in the years thereafter (online supplemental figure S4 and S5).

#### Diagnostic yield of FU endoscopies

Overall, a total of 3889 FU endoscopies was performed in 1154 patients. The diagnostic yield for detection of recurrent LGD/HGD/EAC was 1.0% (95% CI 0.7% to 1.3%) (38/3889) per endoscopy and 0.6% (95% CI 0.4 to 0.9) for recurrent HGD/EAC (24/3889).

Patients in whom CE-BE was achieved before 2015 ( $n=393$ ) underwent 3-monthly endoscopies in the first year of FU (ie, FU at 0–3–6–9–12 months from CE-BE), whereas the remaining 761 patients had the first FU endoscopy performed after 1 year (ie, at 0–12 months from CE-BE). In multivariate cox analysis, no significant association was found between the frequency of

FU in year 1 and dysplastic recurrence during the first 30 months (adjusted HR 1.6 (95% CI 0.6 to 4.1)). During long-term FU, no significant association was found between the frequency of FU in year 1 and progression to advanced neoplasia (adjusted HR 0.8 (95% CI 0.1 to 5.8)) (online supplemental table S7).

#### Random sampling from neosquamous epithelium

A total of 8588 random biopsies were obtained from the NSE in 376 patients during 924 FU endoscopies. Buried BE was found in 10 biopsies; in 1% of all endoscopies (95% CI 1 to 2) and 0.1% of all biopsies (95% CI 0.1 to 0.2) (table 4). None of the buried BE samples showed signs of dysplasia and during a median FU of 4 years and a median of 4 endoscopies after buried BE was noted, the finding was not reproduced and none of the patients showed dysplastic progression.

In 2013, we stopped obtaining random NSE biopsies. Outcomes before 2013 (annual recurrence risk 1.3 (95% CI 0.5 to 2.1)) did not differ significantly from those after 2013 (annual recurrence risk 1.0 (95% CI 0.6 to 1.3)) ( $p=0.56$ ).

#### Random sampling from the cardia

Random biopsies from a normal appearing cardia were obtained during 2733 FU endoscopies in 1121 patients (table 4). Non-dysplastic IM was found in 14% of patients (95% CI 12% to 16%), either as persisting IM after treatment ( $n=78$ ) or recurrent IM during FU ( $n=72$ ). During median 3 endoscopies<sup>2–4</sup> after the first IM finding, IM was reproduced in 33% of patients (95% CI 26% to 42%) during one ( $n=11$ ) or more ( $n=32$ ) endoscopies (table 4). Three patients (2% (95% CI 0% to 7%)) subsequently developed LGD: 2 developed LGD in the cardia without visible BE 12 months after IM was found and 1 developed a BE island in the tubular oesophagus with LGD 36 months after IM was noted in the cardia. None of the patients with IM progressed to HGD or EAC. In multivariate cox analysis adjusted for potential confounders (age, gender, BE length, worst baseline histology, reflux stenosis, incident lesion), no statistically significant association was found between a finding of non-dysplastic IM in the

**Table 4** Diagnostic yield and relevance of random biopsies during follow-up (FU)

Finding	Cumulative incidence			Relevance				
	Patient rate % (95% CI) n/N*	Endoscopy rate % (95% CI) n/N†	Biopsy rate % (95% CI) n/N	FU‡, Years Median (P25–P75)	FU‡, N endoscopies Median (P25–P75)	Reproduced % (95% CI) n/N	Progression to LGD/HGD/EAC % (95% CI) n/N	Progression to HGD/EAC % (95% CI) n/N
NSE random biopsies								
Buried IM	2.7 (1.5 to 4.8) (10/376)	1.1 (0.6 to 2.0) (10/924)	0.1 (0.1 to 0.2) (10/8588)	4 (4 to 5)	4 (4 to 5)	0 (0 to 3.4) (0/10)	0 (0 to 3.4) (0/10)	0 (0 to 3.4) (0/10)
Cardia random biopsies								
IM	13.8 (11.5 to 15.5) (150/1121)	7.2 (6.3 to 8.3) (198/2733)	NA	3 (2 to 4)	3 (2 to 4)	33.3 (25.8 to 41.8) (43/129)§	2.3 (0.1 to 7.2) (3/129)	0 (0 to 2.9) (0/129)
LGD	0.81 (0.42 to 1.5) (9/11 121)	0.73 (0.46 to 1.15) (20/2733)	NA	2 (2 to 5)	2 (2 to 4)	75.0 (35.6 to 95.6) (6/8)¶	NA	0 (0 to 40.2) (0/8)

The diagnostic yield of random biopsies from NSE and cardia and long-term follow-up of abnormal findings.

\*N = patients with at least 1 endoscopy with sampling from NSE or cardia.

†N = Endoscopies with sampling from NSE or cardia.

‡Median FU after detection of buried BE; IM; of LGD.

§N=patients with IM in the cardia; either at end of treatment ( $n=78$ ) or during FU ( $n=72$ ). Patients with treatment ( $n=9$ ) or no FU ( $n=12$ ) were excluded.

¶A single patient underwent additional RFA and was not included for the FU analysis.

\*\*Adjusted for potential confounders age, gender, length of BE, worst pathology at baseline, reflux stenosis, incident lesion.

BE, Barrett's oesophagus; IM, intestinal metaplasia; LGD, low-grade dysplasia; NSE, neosquamous epithelium; RBx, random biopsies; RFA, radiofrequency ablation.



cardia and the risk for recurrence (adjusted HR 0.5 (95% CI 0.2 to 1.7)).

Random biopsies from the cardia were noted to contain LGD in 9 patients (9/11121; 0.8%) and 23 endoscopies (20/2733; 0.9%) (all defined as 'recurrences', table 3). A single patient underwent additional RFA, while the other eight underwent surveillance and during median 2 years FU with two endoscopies, none of these patients progressed to HGD/EAC.

In 2016, we stopped obtaining random cardia biopsies. Outcomes before 2016 (annual recurrence risk 1.0 (95% CI 0.6 to 1.5)) did not differ significantly from those after 2016 (annual recurrence risk 1.0 (95% CI 0.6 to 1.5) (p 0.96)).

### All-cause mortality

During a median FU for vital status of 60 months (p25–p75 38–86) after baseline or 49 months (p25–p75 26–72) after the last treatment, 96 patients died, of which 92 due to unrelated causes (8.0% (6.5% to 9.7%)) and 4 due to metastasised EAC (0.3% (0.0% to 0.7%)). Most common causes of death were neoplasms other than EAC (35/92; 38%), followed by cardiovascular disease (24/93; 26%) and respiratory disease (13/93; 14%). Online supplemental figure S6 shows the cumulative incidence of unrelated death and recurrence during FU.

### Progression to EAC exceeding the boundaries for endoscopic treatment

Overall, 22 patients (22/1386; 1.6% (95% CI 1.1% to 2.4%)) progressed to disease that exceeded guideline boundaries for curative endoscopic treatment, either during treatment (n=17) or during FU after CE-BE was established (n=5). The individual case histories of all these 22 patients are presented in online supplemental table S4.

## DISCUSSION

We report treatment outcomes and long-term FU for all 1386 patients with BE-related neoplasia (ie, LGD, HGD and low-risk EAC) who underwent endoscopic treatment with RFA since 2008, based on a nationwide cohort with treatment provided exclusively in expert centres. Treatment was effective in eradicating all BE in 94% of patients. Most failures had achieved a complete eradication of HGD/EAC, yet 1% of patients progressed to disease stages that exceeded the boundaries for curative endoscopic treatment. The majority of these patients (68%) underwent curative surgery or was unfit for major surgery and had died of unrelated causes or was alive at the moment of data collection.

Long-term effects were analysed over median 43 months with median 4 endoscopies and showed sustained eradication of dysplasia in 97%. The majority of the recurrences underwent curative endoscopic treatment, yet only 0.4% of all patients progressed to advanced EAC. Frequent FU visits in the first year did not contribute to detection of recurrences, nor did random biopsies from NSE or the cardia. Our data suggest that in expert centres, FU intervals after CE-BE may be extended, 3-monthly endoscopies in the first year may be omitted and random biopsies from NSE and cardia abandoned.

Successful treatment has previously been reported in 74%–98% of patients<sup>4–7</sup> with subsequent annual dysplastic recurrence risks of 1%–20% per patient year,<sup>4 8–13</sup> in varying cohort studies and registries from USA and Europe. Our outcome for CE-BE (94%) lies at the upper end of this spectrum and our annual recurrence risk at the lower end (1%). Our beneficial rates might partially be explained by the stringent quality control in our study: treatment

was only performed in expert centres with dedicated pathologists and endoscopists who had participated in joint training programmes. Baseline ER for visible lesions was performed in 53% of HGD patients (ie, 47% of HGD patients had flat BE with HGD in random biopsies and underwent RFA) and 99% of patients with EAC, as compared with 47% and 77%, respectively, of patients in the UK cohort.<sup>33</sup> An important difference with RFA studies from the USA is that we incorporated ablation of the gastro-oesophageal junction during each focal RFA procedure, to guarantee optimal treatment of this area.<sup>6 34 35</sup> In addition, our treatment protocol allowed for additional, low-threshold touch-up ER or APC for remaining BE islands after RFA and for additional focal RFA for persisting IM in the GEJ post-RFA. Finally, persisting IM in a normal appearing GEJ after treatment was included in our definition for success, and treatment success was assessed during a single endoscopy.

The stenosis rate of 15% is relatively high as compared with other studies.<sup>4 6 33</sup> Most prospective clinical trials have restrictions in BE length (ie, less than 8–10 cm) and in extent of prior ER (ie, <2 cm in length and/or <50% of the circumference). However, in current registry, we included all patients independent of BE length or extent of ER. Since these factors had an association with stenosis in our analysis, this may have contributed to the high stenosis rate in the current study.

Our data stress the importance of careful inspection prior to each RFA treatment. Although baseline ER was performed for 62% of patients, incident lesions were found in 5% of patients after RFA was initiated. All patients who progressed to advanced disease were identified as an incident lesion. If visible abnormalities are not recognised and removed with ER but inadvertently treated with RFA, this may lead to incomplete treatment, resulting in progression that remains undetected during the treatment course. Such occurrence may place the patient outside the window of opportunity for curative endoscopic treatment and even for curative surgery.

Although the majority of patients with an incident lesion had curative ER, 10% had progressed to high-risk cancer and required esophagectomy. Overall, 1% of patients had progressed to advanced EAC that exceeded boundaries for curative endoscopic treatment. The majority of progressors were identified at baseline as 'complicated' cases with BE neoplasia, due to ultralong BE segments, multifocal neoplasia and/or severe reflux disease. Extra caution is therefore recommended for these patients.

Our data show that post-RFA recurrences are rare. The annual incidence was 1% for recurrent LGD/HGD/EAC and 0.8% for recurrent HGD/EAC, which indicates that if one would follow 200 patients for 5 year, only 8 will develop HGD/EAC. These rates are comparable to a non-dysplastic BE population under endoscopic surveillance, where FU is performed every 3–5 years.<sup>1</sup>

Prior FU studies suggested that most recurrences occurred in the first year after treatment<sup>12 36</sup> and guidelines therefore suggest to perform 3-monthly endoscopies during the first year of FU, identical to the preablation era when visible lesions were removed with ER and the remaining flat BE was left untreated. The aforementioned studies included recurrent non-dysplastic BE and even IM in the cardia in the definition of recurrence. In our study, we also found more non-dysplastic BE, specifically diminutive islands, during the first 2 years after treatment as compared with the years thereafter. In our opinion, these small areas of non-dysplastic BE could very likely be *residual* tiny BE islands rather than *recurrent* BE. Either way, these small islands were easily treated with a single APC treatment and were found

to be of low clinical relevance. In our opinion, these findings do therefore not justify more frequent FU visits.

Our cohort could be considered as a natural experiment for the effects of 3-monthly endoscopies during the first year of FU. Until 2014, this frequent FU schedule was default while FU was performed on an annual basis from 2015 onwards. Although the cumulative incidence of LGD/HGD/EAC was slightly higher in the patients with 3-monthly endoscopies FU (2.8 vs 1.4%), this difference was not statistically significant and was mainly based on an increased detection of LGD in the cardia, which given the absence of progression to HGD/EAC during FU, was of dubious clinical relevance. Since the reason to perform frequent FU is to prevent progression to advanced neoplasia, this should be the most important outcome in our natural experiment. Although numbers are very low, the risk appeared comparable (0.7% for frequent FU and 0.4% for annual FU, P0.4). Overall, our data suggest that frequent FU in the first year is not associated with clinically relevant recurrence during FU and can be loosened.

Furthermore, background mortality is significant in the post-treatment BE population and we recommend that this may be taken into account when defining of the need for and frequency of post-RFA FU. We are currently developing an evidence based post-RFA FU regimen based on a balance between the risk for recurrent, clinically relevant Barrett's neoplasia and a patient's overall life expectancy and risk to die of other causes.

Our data suggest that there is no need for random biopsies in post-RFA FU when treatment is performed in expert centres. All HGD/EAC recurrences appeared as endoscopically visible abnormalities and none were detected through random biopsies alone. Careful inspection of the NSE along the length of the initial BE, with targeted biopsies of any visible abnormality, is therefore the most essential part of FU. Crucial part of the inspection is careful retroflexed inspection of the cardia, since 18% of the HGD/EAC recurrences in this study occurred in this area, and these can easily be overlooked during inspection with the endoscope in antegrade position.

NSE random biopsies showed buried BE in 3% of patients, a finding that was neither reproduced nor associated with neoplastic progression during median 4 years of FU and a median of 4 endoscopies. Our findings are in line with other studies<sup>12</sup> and supports our decision to change in our FU strategy in 2013 by abandoning random NSE biopsies.

Cardia random biopsies were noted to contain IM in 14% of patients or 7% of endoscopies. Our data suggest that this is no clinically relevant disease and no indication for treatment: during median 3 years of FU with a median of 3 endoscopies, the finding was reproduced in only 33% of the patients and none progressed to neoplasia. This is in line with prior studies that showed reproduction of IM in 11%–33% during median 3–5 FU endoscopies.<sup>4 9 37</sup> A recent study showed no increased risk for dysplasia among patients with recurrent IM of the cardia.<sup>38</sup> These outcomes are comparable to those reported for a healthy, asymptomatic population without BE. IM can occur in 4%–15% of the normal population,<sup>39–44</sup> and a study from the Mayo Clinic followed 86 patients with a diagnosis of IM of the cardia for 8 years, during which none progressed to neoplasia.<sup>45</sup> Accordingly, Krajciova *et al* showed in their retrospective analysis of 136 patients with successful ablation, that persisting IM after treated or recurrent IM during FU, detected in random biopsies from a normal appearing cardia, was not associated with an increased risk for dysplastic recurrence.<sup>45</sup>

Apart from IM, an endoscopically normal cardia was found to contain LGD in 0.8% of patients or 0.7% of endoscopies. Although we defined this as a recurrence, the clinical

relevance of this finding was negligible. None of the patients progressed to HGD/EAC and this is in line with the aforementioned study from the Mayo Clinic, which showed no progression in eight patients with LGD of the cardia.<sup>45</sup> Since we have stopped obtaining random biopsies from the cardia in 2016, this entity of 'invisible' LGD in the cardia will no longer be detected and, based on the low risk for progression, this appears justified. Moreover, since patients are kept under endoscopic surveillance, potential progression to HGD or worse may still be identified and treated at early stages.

Long-term endpoints for treatment of BE neoplasia have undergone significant transformation over the years. Initially, esophagectomy was the standard therapy and success was defined as 5-year tumor-free survival. Currently, endoscopic treatment is treatment of choice and given the extremely low mortality rates, EAC-related death has no longer been an appropriate endpoint. Instead, increasingly more stringent definitions have been used over time and nowadays, some studies report sustained eradication of all BE including invisible IM in the cardia.<sup>12</sup> Although a complete eradication of BE reflects an appropriate *treatment outcome* for RFA, it does not express the outcome of interest *during FU*. CE-BE after treatment may in fact be considered as an intermediate endpoint for the outcome of interest and the main motive to initiate RFA, that is, a reduction in the risk for future (advanced) neoplasia. Therefore, we suggest that recurrent neoplasia and not BE or IM should be the primary endpoint for assessment of long-term outcomes.

This study has important strengths. This is the first report of a nationwide cohort of patients with BE with long-term FU after centralised treatment in expert centres. Our data are homogeneous: all endoscopists and pathologists participated in a specific and joint training programme and all centres followed a uniform treatment and FU protocol. We included all patients in the Netherlands who underwent EET. We provide high-quality data that were collected by dedicated researchers and with central discussion of all patients with endpoints. A rigorous treatment and FU protocol in all BECs and meticulous data collection resulted in only 1% of our patients that were lost to FU.

We have to address some limitations as well. Although our patients were registered prospectively, most of the actual data collection was done retrospectively with a risk for bias, specifically selection and information bias. All patients in the current study underwent at least one RFA treatment and results are therefore only applicable to patients undergoing RFA treatment. As shown in figure 1, 94 patients underwent ER monotherapy with surveillance of the remaining BE instead of RFA. Although in a majority of patients RFA was not initiated due to limited life expectancy, this decision may have (partially) been based on expected poor response after RFA, for example, due to BE regeneration of the ER wound. Long-term outcomes of these 94 patients have been described separately.<sup>27</sup> During median 21 months FU with 4 endoscopies per patient, 17 patients (18%) progressed to HGD/EAC. No patient progressed to advanced EAC. Endoscopic surveillance of a remaining BE segment after ER, instead of RFA, may be the preferred treatment strategy in selected patients.

Furthermore, 27% of our patients had LGD at baseline, and comparisons with HGD/EAC cohorts should therefore be made with caution. Information bias may have been present due to data collection by different persons, although random checks were performed by a second person for 50% of patients. Still, we had only few missing data due to

standardised endoscopy and pathology reports in all centres. Furthermore, the assessment whether the cardia appears abnormal or normal, and thus whether biopsies should be obtained or not, may be operator dependent. Our study included only patients in the Netherlands, which limits the generalisability. All patients underwent endoscopic workup and treatment at expert centres and the results of this study can therefore not automatically be extrapolated to general practice. Current guidelines however recommend centralisation of EET for patients with Barrett's neoplasia in dedicated centres with multidisciplinary experience in this field (ie, experience in endoscopic imaging and treatment, sufficient case volumes, expert GI-pathology, and access to oesophageal surgery). Finally, although all centres followed the central treatment protocol that advised on which regimen should be used, we have no data on RFA regimen.

In conclusion, this large cohort of all Dutch patients treated with RFA±ER for BE with dysplasia or low-risk EAC, according to a uniform treatment protocol in a centralised setting, demonstrates that this approach successfully eradicates the BE segment in 94% of patients. Post-RFA recurrences are rare. Clinically relevant recurrences are detected as endoscopic abnormalities and at stages generally amenable for curative endoscopic treatment. Our data suggest that post-RFA FU can be simplified: we may abandon 3-monthly endoscopies in the first year of FU and we may stop random sampling of NSE and cardia. Instead, dedicated endoscopic inspection, and if needed target biopsies are the most important steps to detect post-RFA recurrences.

#### Author affiliations

- <sup>1</sup>Gastroenterology and Hepatology, Amsterdam UMC Locatie AMC, Amsterdam, North Holland, The Netherlands
- <sup>2</sup>Gastroenterology and Hepatology, Sint Antonius Hospital, Nieuwegein, The Netherlands
- <sup>3</sup>Gastroenterology and Hepatology, University Medical Center Utrecht, Utrecht, The Netherlands
- <sup>4</sup>Gastroenterology and Hepatology, Isala Klinieken, Zwolle, Overijssel, The Netherlands
- <sup>5</sup>Department of Gastroenterology and Hepatology, Catharina Hospital Eindhoven, Eindhoven, The Netherlands
- <sup>6</sup>Gastroenterology and Hepatology, Erasmus University Medical Center, Rotterdam, The Netherlands
- <sup>7</sup>Department of Gastroenterology and Hepatology, IJsselland Ziekenhuis, Capelle aan den IJssel, Zuid-Holland, The Netherlands
- <sup>8</sup>Department of Gastroenterology and Hepatology, University of Groningen, University Medical Center Groningen, Groningen, The Netherlands
- <sup>9</sup>Gastroenterology and Hepatology, Haga Hospital, Den Haag, Zuid-Holland, The Netherlands

**Collaborators** A Karrenbeld (Department of pathology, University Medical Center Groningen, Groningen, The Netherlands); A Ooms (Department of pathology, Pathan, Rotterdam, The Netherlands); C Huysentruyt (Department of Pathology, Laboratory for Pathology and Medical Microbiology (PAMM), Eindhoven, The Netherlands); F ten Kate; F Moll (Department of pathology, Isala Clinics, Zwolle, The Netherlands); G Kats-Ugurlu (Department of pathology, University Medical Center Groningen, Groningen, The Netherlands); I van Lijschoten (Department of Pathology, Laboratory for Pathology and Medical Microbiology (PAMM), Eindhoven, The Netherlands); J van de Laan (Department of pathology, Haga teaching hospital, Den Haag, The Netherlands); J Offerhaus (Department of pathology, University Medical Center Utrecht, Utrecht, The Netherlands); K Biermann (Department of pathology, Erasmus MC, Rotterdam, The Netherlands); K Seldenrijk (Department of pathology, Antonius hospital, Nieuwegein, The Netherlands); L Brosens (Department of pathology, University Medical Center Utrecht, Utrecht, The Netherlands); S Meijer (Department of pathology, Amsterdam university medical centers, location AMC, Amsterdam, The Netherlands); M Doukas (Department of pathology, Erasmus MC, Rotterdam, The Netherlands); E Overdeest; R Houwen; A Kumcu; M van Riswijk; MW Chan; C Kroeze; M Siim; E Verheij; S van der Graaf; S Nedjat.

**Contributors** SvM, EN and SEMvdV did data acquisition. SvM, EN, JGHMB, and REP coordinated study and data collection. SvM, REP and JGHMB did the statistical analysis. EN, JGHMB, REP contributed to data analysis and interpretation of data

in weekly research group meetings. SvM drafted the manuscript. REP and JGHMB co-authored the manuscript. BLAMW, LAH, AB, AA, BES, EJS, WC, ADK, PJfDj, TJJ, WBN, FTMP, JW, MHMGH, JGHMB, REP participated in annual meetings and were responsible for treatment of patients in their center. All authors critically edited, read, and approved the final manuscript.

**Funding** The authors have not declared a specific grant for this research from any funding agency in the public, commercial or not-for-profit sectors.

**Competing interests** SvM, EN, AH, AB, AA, BES, EJS, WC, ADK, SEMvdV, PJfDj, TJJ, WBN, FTMP, JW, MHMGH, REP declared to have no disclosures relevant to this manuscript. BLAMW received financial support for IRB-approved research from C2Therapeutics/Pentax Medical. JGHMB received financial support for IRB-approved research from C2Therapeutics/Pentax Medical, Medtronic, and Aqua Medical.

**Patient consent for publication** Not required.

**Ethics approval** The registry was performed in accordance with the provisions of the Declaration of Helsinki and local regulations. Patients were either treated according to clinical guidelines, or enrolled in prospective clinical trials on approval from the Institutional Review Board and a signed informed consent form. The Institutional Review Board of the Amsterdam University Medical Centers declared that the registry was not subject to the Medical Research Involving Human Subjects Act and waived the need for formal ethical review and patient-informed consent. Patients were approached through an opt-out card with the possibility to object against participation in the registry.

**Provenance and peer review** Not commissioned; externally peer reviewed.

**Data availability statement** Data are available upon reasonable request. Additional information (protocols, statistical analysis) are available upon request.

**Supplemental material** This content has been supplied by the author(s). It has not been vetted by BMJ Publishing Group Limited (BMJ) and may not have been peer-reviewed. Any opinions or recommendations discussed are solely those of the author(s) and are not endorsed by BMJ. BMJ disclaims all liability and responsibility arising from any reliance placed on the content. Where the content includes any translated material, BMJ does not warrant the accuracy and reliability of the translations (including but not limited to local regulations, clinical guidelines, terminology, drug names and drug dosages), and is not responsible for any error and/or omissions arising from translation and adaptation or otherwise.

**Open access** This is an open access article distributed in accordance with the Creative Commons Attribution 4.0 Unported (CC BY 4.0) license, which permits others to copy, redistribute, remix, transform and build upon this work for any purpose, provided the original work is properly cited, a link to the licence is given, and indication of whether changes were made. See: <https://creativecommons.org/licenses/by/4.0/>.

#### ORCID iDs

Steffi Elisabeth Maria van de Ven <http://orcid.org/0000-0001-9793-0957>  
 Jacques JGHM Bergman <http://orcid.org/0000-0002-2283-5098>  
 Roos E Pouw <http://orcid.org/0000-0002-4707-1186>

#### REFERENCES

- 1 Weusten B, Bisschops R, Coron E, *et al*. Endoscopic management of Barrett's esophagus: European Society of gastrointestinal endoscopy (ESGE) position statement. *Endoscopy* 2017;49:191–8.
- 2 Gastroenterologists DSo. *Richtlijn Barrett-Oesofagus*, 2017.
- 3 Sharma P, Shaheen NJ, Katzka D, *et al*. AGA clinical practice update on endoscopic treatment of Barrett's esophagus with dysplasia and/or early cancer: expert review. *Gastroenterology* 2020;158:760–9.
- 4 Phoa KN, Pouw RE, Bisschops R, *et al*. Multimodality endoscopic eradication for neoplastic Barrett oesophagus: results of an European multicentre study (EURO-II). *Gut* 2016;65:555–62.
- 5 Phoa KN, van Vilsteren FGI, Weusten BLAM, *et al*. Radiofrequency ablation vs endoscopic surveillance for patients with Barrett esophagus and low-grade dysplasia: a randomized clinical trial. *JAMA* 2014;311:1209–17.
- 6 Shaheen NJ, Sharma P, Overholt BF, *et al*. Radiofrequency ablation in Barrett's esophagus with dysplasia. *N Engl J Med* 2009;360:2277–88.
- 7 Desai M, Saligram S, Gupta N, *et al*. Efficacy and safety outcomes of multimodal endoscopic eradication therapy in Barrett's esophagus-related neoplasia: a systematic review and pooled analysis. *Gastrointest Endosc* 2017;85:482–95.
- 8 Wani S, Puli SR, Shaheen NJ, *et al*. Esophageal adenocarcinoma in Barrett's esophagus after endoscopic ablative therapy: a meta-analysis and systematic review. *Am J Gastroenterol* 2009;104:502–13.
- 9 Phoa KN, Pouw RE, van Vilsteren FGI, *et al*. Remission of Barrett's esophagus with early neoplasia 5 years after radiofrequency ablation with endoscopic resection: a Netherlands cohort study. *Gastroenterology* 2013;145:96–104.
- 10 Pasricha S, Bulsiewicz WJ, Hathorn KE, *et al*. Durability and predictors of successful radiofrequency ablation for Barrett's esophagus. *Clin Gastroenterol Hepatol* 2014;12:1840–7.

- 11 Cotton CC, Haidry R, Thrift AP, *et al.* Development of evidence-based surveillance intervals after radiofrequency ablation of Barrett's esophagus. *Gastroenterology* 2018;155:316–26.
- 12 Sami SS, Ravindran A, Kahn A, *et al.* Timeline and location of recurrence following successful ablation in Barrett's oesophagus: an international multicentre study. *Gut* 2019;68:1379–85.
- 13 Pouw RE, Klaver E, Phoa KN, *et al.* Radiofrequency ablation for low-grade dysplasia in Barrett's esophagus: long-term outcome of a randomized trial. *Gastrointest Endosc* 2020.
- 14 Curvers WL, ten Kate FJ, Krishnadath KK, *et al.* Low-Grade dysplasia in Barrett's esophagus: overdiagnosed and underestimated. *Am J Gastroenterol* 2010;105:1523–30.
- 15 Duits LC, Phoa KN, Curvers WL, *et al.* Barrett's oesophagus patients with low-grade dysplasia can be accurately risk-stratified after histological review by an expert pathology panel. *Gut* 2015;64:700–6.
- 16 Duits LC, van der Wel MJ, Cotton CC, *et al.* Patients With Barrett's Esophagus and Confirmed Persistent Low-Grade Dysplasia Are at Increased Risk for Progression to Neoplasia. *Gastroenterology* 2017;152:993–1001.
- 17 van der Wel MJ, Klaver E, Duits LC, *et al.* Adherence to pre-set benchmark quality criteria to qualify as expert assessor of dysplasia in Barrett's esophagus biopsies - towards digital review of Barrett's esophagus. *United European Gastroenterol J* 2019;7:889–96.
- 18 Bergman JJGHM, de Groof AJ, Pech O, *et al.* An interactive web-based educational tool improves detection and delineation of Barrett's Esophagus-Related neoplasia. *Gastroenterology* 2019;156:1299–308.
- 19 Curvers WL, van Vilsteren FG, Baak LC, *et al.* Endoscopic trimodal imaging versus standard video endoscopy for detection of early Barrett's neoplasia: a multicenter, randomized, crossover study in general practice. *Gastrointest Endosc* 2011;73:195–203.
- 20 de Groof J, van der Sommen F, van der Putten J, *et al.* The argos project: the development of a computer-aided detection system to improve detection of Barrett's neoplasia on white light endoscopy. *United European Gastroenterol J* 2019;7:538–47.
- 21 Barret M, Belghazi K, Weusten BLAM, *et al.* Single-session endoscopic resection and focal radiofrequency ablation for short-segment Barrett's esophagus with early neoplasia. *Gastrointest Endosc* 2016;84:29–36.
- 22 Belghazi K, Marcon N, Teshima C, *et al.* Risk factors for serious adverse events associated with multiband mucosectomy in Barrett's esophagus: an international multicenter analysis of 3827 endoscopic resection procedures. *Gastrointest Endosc* 2020;92:259–68.
- 23 Belghazi K, Pouw RE, Koch AD, *et al.* Self-sizing radiofrequency ablation balloon for eradication of Barrett's esophagus: results of an international multicenter randomized trial comparing 3 different treatment regimens. *Gastrointest Endosc* 2019;90:415–23.
- 24 Pouw RE, Künzli HT, Bisschops R, *et al.* Simplified versus standard regimen for focal radiofrequency ablation of dysplastic Barrett's oesophagus: a multicentre randomised controlled trial. *Lancet Gastroenterol Hepatol* 2018;3:566–74.
- 25 Pouw RE, van Vilsteren FGI, Peters FP, *et al.* Randomized trial on endoscopic resection-cap versus multiband mucosectomy for piecemeal endoscopic resection of early Barrett's neoplasia. *Gastrointest Endosc* 2011;74:35–43.
- 26 van Vilsteren FGI, Alvarez Herrero L, Pouw RE, *et al.* Predictive factors for initial treatment response after circumferential radiofrequency ablation for Barrett's esophagus with early neoplasia: a prospective multicenter study. *Endoscopy* 2013;45:516–25.
- 27 van Munster SN, Nieuwenhuis EA, Weusten BLAM, *et al.* Endoscopic resection without subsequent ablation therapy for early Barrett's neoplasia: endoscopic findings and long-term mortality. *J Gastrointest Surg* 2021;25:67–76.
- 28 Künzli HT, Schölvinck DW, Phoa KN, *et al.* Simplified protocol for focal radiofrequency ablation using the HALO90 device: short-term efficacy and safety in patients with dysplastic Barrett's esophagus. *Endoscopy* 2015;47:592–7.
- 29 Alvarez Herrero L, van Vilsteren FGI, Pouw RE, *et al.* Endoscopic radiofrequency ablation combined with endoscopic resection for early neoplasia in Barrett's esophagus longer than 10 cm. *Gastrointest Endosc* 2011;73:682–90.
- 30 Alvarez Herrero L, Curvers WL, van Vilsteren FGI, *et al.* Validation of the Prague C&M classification of Barrett's esophagus in clinical practice. *Endoscopy* 2013;45:876–82.
- 31 Pouw RE, Visser M, Odze RD, *et al.* Pseudo-buried Barrett's post radiofrequency ablation for Barrett's esophagus, with or without prior endoscopic resection. *Endoscopy* 2014;46:105–9.
- 32 van der Wel MJ, Duits LC, Klaver E, *et al.* Development of benchmark quality criteria for assessing whole-endoscopy Barrett's esophagus biopsy cases. *United European Gastroenterol J* 2018;6:830–7.
- 33 Haidry RJ, Lipman G, Banks MR, *et al.* Comparing outcome of radiofrequency ablation in Barrett's with high grade dysplasia and intramucosal carcinoma: a prospective multicenter UK registry. *Endoscopy* 2015;47:980–7.
- 34 Lyday WD, Corbett FS, Kuperman DA, *et al.* Radiofrequency ablation of Barrett's esophagus: outcomes of 429 patients from a multicenter community practice registry. *Endoscopy* 2010;42:272–8.
- 35 Fleischer DE, Overholt BF, Sharma VK, *et al.* Endoscopic radiofrequency ablation for Barrett's esophagus: 5-year outcomes from a prospective multicenter trial. *Endoscopy* 2010;42:781–9.
- 36 Vliebergh JH, Deprez PH, de Looze D, *et al.* Efficacy and safety of radiofrequency ablation of Barrett's esophagus in the absence of reimbursement: a multicenter prospective Belgian registry. *Endoscopy* 2019;51:317–25.
- 37 Pouw RE, Klaver E, Phoa KN, *et al.* Radiofrequency ablation for low-grade dysplasia in Barrett's esophagus: long-term outcome of a randomized trial. *Gastrointest Endosc* 2020;92:569–74.
- 38 Solfisburg QS, Sami SS, Gabre J, *et al.* Clinical significance of recurrent gastroesophageal junction intestinal metaplasia after endoscopic eradication of Barrett's esophagus. *Gastrointest Endosc* 2020. doi:10.1016/j.gie.2020.10.027. [Epub ahead of print: 02 Nov 2020].
- 39 Siddiki HA, Lam-Himlin DM, Kahn A, *et al.* Intestinal metaplasia of the gastric cardia: findings in patients with versus without Barrett's esophagus. *Gastrointest Endosc* 2019;89:759–68.
- 40 Byrne JP, Bhatnagar S, Hamid B, *et al.* Comparative study of intestinal metaplasia and mucin staining at the cardia and esophagogastric junction in 225 symptomatic patients presenting for diagnostic open-access gastroscopy. *Am J Gastroenterol* 1999;94:98–103.
- 41 Zaninotto G, Avellini C, Barbazza R, *et al.* Prevalence of intestinal metaplasia in the distal oesophagus, oesophagogastric junction and gastric cardia in symptomatic patients in north-east Italy: a prospective, descriptive survey. The Italian Ulcer Study Group "GISU". *Dig Liver Dis* 2001;33:316–21.
- 42 Spechler SJ, Zeroogian JM, Antonioli DA, *et al.* Prevalence of metaplasia at the gastro-oesophageal junction. *Lancet* 1994;344:1533–6.
- 43 Peck-Radosavljevic M, Püspök A, Pötzi R, *et al.* Histological findings after routine biopsy at the gastro-oesophageal junction. *Eur J Gastroenterol Hepatol* 1999;11:1265–70.
- 44 Hirota WK, Loughney TM, Lazas DJ, *et al.* Specialized intestinal metaplasia, dysplasia, and cancer of the esophagus and esophagogastric junction: prevalence and clinical data. *Gastroenterology* 1999;116:277–85.
- 45 Jung KW, Talley NJ, Romero Y, *et al.* Epidemiology and natural history of intestinal metaplasia of the gastroesophageal junction and Barrett's esophagus: a population-based study. *Am J Gastroenterol* 2011;106:1447–55.

## Supplementary material

### Tables

Table S1. Qualifications for a Barrett Expert Center

Table S2. Definitions

Table S3. Treatment success and failures

Table S4. Progression to advanced disease

Table S5. Risk factors for esophageal stenosis

Table S6. Recurrent NDBE

Table S7. Yield of 3-monthly endoscopies in the first year after CE-BE

### Figures

Figure S1. Changes in outcomes over time

Figure S2. Three types of recurrent BE neoplasia during FU

Figure S3. Timing and location of recurrences

Figure S4. Timing of recurrent non-dysplastic BE tongues and BE islands

Figure S5. Recurrent non-dysplastic BE tongues and islands

Figure S6. Risk for recurrence and unrelated death during long-term FU

**Table S1. Qualifications for a Barrett Expert Center**

Annual case load for new BE dysplasia >10
1-2 dedicated endoscopists with joint training and demonstrable further education <sup>1</sup>
1-2 dedicated pathologists with joint training and demonstrable further education <sup>2</sup>
High-resolution endoscopic equipment
Expertise to handle complications with access to surgical expertise
Multidisciplinary consultation (surgery, oncology, pathology) for patients with BE neoplasia
Participation in quarterly meetings and case discussions
Adherence to the joint treatment/FU protocol
Prospective registration of all patients in a database

*Qualifications for a center to be a Barrett Expert Center, according to the Dutch Barrett guideline (2).*

*1: Endoscopists all participated in quarterly meetings with discussion of difficult cases, discussion of new clinical studies and recent literature.*

*2: All pathologists assessed a digitalized set of 60 whole endoscopy slides, followed by 80 digital cases with 2 consensus meetings; pathologists participated in bi-annual group meetings to discuss difficult cases and recent literature.*

Table S2. Definitions

Term	Definition
Advanced EAC exceeding the boundaries for curative endoscopic treatment	BE neoplasia exceeding the boundaries for curative endoscopic treatment, due to high-risk EAC ( $\geq$ sm2-EAC, poor differentiation, lymphovascular invasion, or irradiated vertical resection margin) or neoplasia that based on its endoscopic appearance as a visible lesion would require an endoscopic resection yet which could technically not be performed based on extent or local scarring.
BE related dysplasia and early cancer (treatment indication)	BE containing LGD, HGD, or low-risk EAC (defined as $\leq$ sm1-EAC with good-moderate differentiation, no lymphovascular invasion, and radical vertical resection margin)
Bleeding	Bleedings (signs of hematemesis, melena, or drop in hemoglobin level) that occurred after the endoscopy and for which a hospital admission or a medical intervention was required.
Complete endoscopic eradication of BE (CE-BE)	Complete eradication of all visible Barrett mucosa and all dysplasia. Patients with complete endoscopic eradication of all visible BE, yet persisting IM in the random cardia biopsies, were considered CE-BE.
Complication, fatal	Death attributable to procedure $<$ 30 days or longer with continuous hospitalization
Complication, mild	Unplanned hospital admission, hospitalization $<$ 3 days, haemoglobin drop $<$ 3 g, no transfusion
Complication, moderate	4–10 days hospitalisation, $<$ 4 units blood transfusion, repeat endoscopic intervention, radiological intervention
Complication, severe	hospitalisation $>$ 10 days, intensive care unit (ICU) admission, need for surgery, $>$ 4 units blood transfusion, in the case of stenosis: $>$ 5 dilatations, stent placement or incision therapy
Failure, real	Failure for CE-BE with $>$ 20% of the initial BE remaining and/or persisting neoplasia
Failure, elective decision	Failure for CE-BE with $<$ 20% of the initial BE remaining and no neoplasia, in whom an elective decision was made to withhold further treatment due to expected minimal benefits from further therapy
Perforation	Transmural defect of esophageal wall during or immediately following the endoscopy, and/or free air or leakage on radiologic examination
Per-protocol population	All patients in the RFA treatment cohort, who completed the treatment protocol. Patients were excluded for this analysis, if A) unrelated death occurred during treatment, or B) a significant change in comorbidity occurred during treatment and continued RFA was considered medically unjustified.
Poor healing	Visible ulcerations $\geq$ 3 months after RFA treatment
Poor squamous regeneration	$<$ 50% squamous regression after RFA treatment
Recurrent non-dysplastic BE	Recurrent endoscopically visible BE in the tubular esophagus, with random biopsies showing IM without dysplasia
Severe reflux esophagitis	Los Angeles Classification Grade C/D reflux esophagitis
Stenosis	(a)Symptomatic esophageal narrowing requiring an intervention (e.g. endoscopic dilatation, incision therapy, or stent placement).
Sustained eradication of dysplasia	Complete and sustained eradication of LGD, HGD, or EAC during long-term endoscopic follow-up. A patient was considered a failure for this endpoint if recurrent LGD, HGD, or EAC was detected in the tubular esophagus or cardia, or if lymph node or distant metastasis from EAC were found during follow-up.
Sustained eradication of HGD/EAC	Complete and sustained eradication of HGD, or EAC during long-term endoscopic follow-up. A patient was considered a failure for this endpoint if recurrent HGD, or EAC was detected in any of the biopsies or ER specimen from the tubular esophagus or cardia, or if lymph node or distant metastasis from EAC were found during follow-up.
Touch-up treatment	Any residual BE persisting after RFA sessions could be treated with a single ER session (for areas $>$ 5 mm) or with a maximum of two argon plasma coagulation (APC) sessions in case of areas $<$ 5 mm.

Treatment failure	Patients were considered a failure for CE-BE if residual visible BE persisted after completing the treatment protocol, including –when necessary– a single ER or a maximum of two touch-up APC treatments, and/or if residual dysplasia persisted in biopsies from the cardia.
Visible lesion	Any mucosal irregularity or discoloration within the BE



Table S3. Treatment success and failures

	Success	Treatment failures		
	CE-BE N=1270	All N=78	Elective treatment stop N=34	Real treatment failures N=44
Age, years, mean ( $\pm$ sd)	64 (9)	68 (9)	70 (10)	66 (8)
Male gender, n (%)	1039 (82)	55 (70)	23 (68)	32 (72)
Initial BE length, cm, median (IQR)	C2M4 (0-5; 3-7)	C8M9 (4-10; 6-12)	C4M6 (3-8; 4-9)	C10M11 (6-12; 7-13)
Initial histology, n (%)				
LGD	350 (28)	16 (21)	7 (21)	9 (21)
HGD	391 (31)	17 (22)	7 (21)	10 (23)
EAC	529 (42)	45 (58)	20 (59)	25 (57)
ER, n (%)	781 (62)	56 (72)	24 (73)	32 (73)
C-RFA, N, median (IQR)	1 (0-1)	1 (1-1)	1 (0-1)	1 (1-2)
F-RFA, N, median (IQR)	2 (1-2)	1 (0-2)	1 (1-2)	0 (0-1)
Duration of treatment (months, IQR)	10 (5-13)	10 (5-22)	14 (7-29)	8 (3-15)
Persisting IM in normal appearing GEJ, n (%)	85 (7)			
Extent of residual BE, cm, median (IQR)		C1M4 (0-6; 2-8)	C0M2 (0-1; 1-2)	C5M7 (2-7; 5-11)
Reason to stop, n (%)				
High-risk EAC		7 (9)	-	7 (16)
Multifocal lesions		10 (13)	-	10 (23)
Poor squamous regeneration		38 (49)	11 (32)	27 (61)
Esophageal stenosis		14 (18)	14 (41)	-
All BE and HGD/EAC eradicated**		9 (12)	9 (26)	-
Residual PA, n (%)				
NDBE/LGD		58 (74)	34 (100)	24 (55)
HGD/EAC		20 (26)	-	20 (45)
Final outcome, n (%)				
Progression*	-	17 (22)	-	17 (39)
CE-BE after extensive ER	-	5 (6)	2 (6)	3 (7)
Endoscopic surveillance	1,154***	52 (67)	29 (85)	23 (53)
No further surveillance		4 (5)	3 (9)	1 (2)
Endoscopic surveillance				
Duration, mo, mean ( $\pm$ sd)	39 (29)	47 (31)	49 (22)	45 (39)
Endoscopies, n, mean ( $\pm$ sd)	3 (2)	4 (3)	4 (3)	5 (4)
HGD/EAC, n(%)	24 (2)	13 (25)	6 (18)	7 (30)

Abbreviations: BE – Barrett's esophagus; C-RFA – circumferential RFA; CE-BE – complete endoscopic eradication of Barrett's esophagus; EAC – esophageal adenocarcinoma; ER – endoscopic resection; F-RFA – focal RFA; GEJ – gastroesophageal junction; HGD – high-grade dysplasia; IQR – interquartile range; LGD – low-grade dysplasia; mo – months; NDBE – non-dysplastic BE; SD – standard deviation

\*Disease progression to *ta* stage that exceeded boundaries for curative endoscopic treatment

\*\*Only persisting LGD in the cardia

\*\*\* 1,154 patients with CE-BE and endoscopic surveillance afterwards

Table S4. Progression to advanced neoplasia

SSA. Progression during treatment phase													
Pt nr	Treatm ent year	Initial BE (cm)	Reflux - itis a/o stenosis	Lesio ns (n)	Baseline histology	ER (n pieces)	RFA (n, (C/F)	PH, PSR	Incident lesion, treatment (histology)	Time (mo)	Indication for surgery	Esophagectomy	Outcome
<i>Progression to EAC exceeding the boundaries for curative endoscopic treatment</i>													
1	2011	C15M15	No	1	M3-EAC	Yes (4)	5 (3/2)	Yes	Yes, ER (sm,R1)	32	PSR with progression to high-risk EAC	Yes (T2N1M0)	Curative surgery, unrelated death
2	2009	C8M10	No	1	M3-EAC, residual HGD	Yes (4)	2 (0/2)	No	Yes, ER (sm, G3, R1)	13	Progression to high-risk EAC	Yes (T1bN2M0)	Curative surgery, unrelated death
3	2017	C1M2	No	1	M3-EAC	Yes (2)	1 (0/1)	No	Yes, ER (sm2, G3, R1)	10	Progression to high-risk EAC	Yes (T2N0M0)	Curative surgery, alive
4	2011	C5M7	Yes	2	M3-EAC, residual LGD	Yes (2)	2 (1/1)	Yes	Yes, ER (sm1, LVI+, R1)	10	PSR with progression to high-risk EAC	Yes (TisN0M0)	Curative surgery, alive
5	2009	C5M8	No	-	Multifocal HGD	No	3 (1/2)	No	Yes, ER (sm2, LVI+, R1)	22	Progression to high-risk EAC	Yes (T1bN0M0)	Curative surgery, alive
6	2012	C11M14	Yes	2	HGD, residual HGD	Yes (4)	1 (1/0)	Yes	Yes, ER (sm, R1)	19	PSR with progression to high-risk EAC	No, patient refused surgery	EAC-related death
7	2009	C15M15	Yes	-	Multifocal HGD	No	2 (2/0)	Yes	Yes, ER (sm, LVI+, R1)	8	PSR with progression to high-risk EAC	No, unfit for surgery	EAC-related death
<i>Endoscopic resection technically impossible due to multifocality and/or post-treatment fibrosis</i>													
8	2008	C11M13	No	2	M3-EAC, residual EAC	Yes (2)	1 (1/0)	No	Multifocal, no ER (EAC)	8	Multifocal EAC	Yes (T1aN0M0)	Curative surgery, alive
9	2008	C10M12	No	1	M2-EAC	Yes (3)	2 (2/0)	Yes	Multifocal, partial ER (HGD)	9	Multifocal HGD and PSR	Yes (T1aN0M0)	Curative surgery, alive
10	2008	C12M13	No	3	M3-EAC	Yes (7)	1 (1/0)	Yes	Multifocal, no ER (EAC)	4	Multifocal EAC and PSR	Yes (T1aN0M0)	Curative surgery, alive
11	2016	C6M11	No	2	M3-EAC, residual unk	Yes (7)	1 (1/0)	Yes	Multifocal, partial ER (HGD)	22	Multifocal HGD and PSR	Yes (T0N0M0)	Curative surgery, alive
12	2015	C2M6	No	2	M2-EAC, residual HGD	Yes (4)	3 (0/3)	No	Multifocal, partial ER (LGD)	14	Rapidly growing, multifocal abnormalities	No, unfit for surgery	EAC-related death
13	2015	C10M11	Yes	1	M3-EAC, residual unk	Yes (4)	2 (2/0)	Yes	Multifocal, no ER (EAC)	6	Multifocal EAC, PSR, and stenosis	No, unfit for surgery	EAC-related death
14	2012	C11M12	No	1	M3-EAC, residual unk	Yes (1)	2 (2/0)	Yes	Multifocal, no ER (HGD)	10	Multifocal HGD and PSR	No, unfit for surgery	Unrelated death
15	2013	C12M13	No	1	Sm1-EAC	Yes (10)	2 (1/1)	No	Yes, incomplete ER (EAC)	21	Persisting lesion with EAC and severe fibrosis	No, unfit for surgery	Unrelated death
16	2014	C14M16	No	2	M3-EAC, residual HGD	Yes (14)	1 (0/1)	Yes	Multifocal, no ER (HGD)	5	Multifocal HGD and PSR	No, unfit for surgery	Alive

17	2010	C11M13	No	1	M2-EAC, residual unk	Yes (3)	1 (1/0)	Yes	Multifocal, partial ER (EAC)	6	Multifocal EAC and PSR	No, unfit for surgery	Alive
----	------	--------	----	---	----------------------	---------	---------	-----	------------------------------	---	------------------------	-----------------------	-------

S5B. Progression during follow-up														
Patient	Treatment year	Initial BE (cm)	Reflux -itis a/o stenosis	Lesions (n)	Baseline histology	ER (n pieces)	RFA (n), (C/F)	PH, PSR	Incident lesion, treatment (histology)	Touch-up	FU duration before progression	Type of progression	Esophagectomy	Final outcome
1	2010	C12M13	Yes	2	M3-EAC	Yes (2)	3 (1/2)	No	No	1 APC	30mo, 2 endo	Metastasized EAC, no intra-luminal recurrence	No, metastasized at moment of detection	EAC-related death
2	2008	C8M10	Yes	3	M3-EAC	Yes (2)	2 (2/0)	Yes	No	Multiple APC	24 mo, 2 endo	Recurrent lesion and ER (sm1, G3, R1)	Yes (TxN0M0),	+8 years recurrent EAC in gastric tube, chemoradiation. Alive.
3	2009	C3M5	No	1	M3-EAC	Yes (2)	4 (1/3)	No	No	-	12 mo, 2 endo	Recurrent lesion and ER (sm2, G3, LVI+, R1)	Yes (TxN1M0)	+1.5 years M1, EAC-related death.
4	2011	C8M8	No	-	Multifocal HGD	No	3 (1/2)	No	No	-	30 mo, 2 endo	Recurrent lesion and ER (sm2, G3, LVI+, R0)	Yes (T1bN2M0).	+3 months M1, EAC-related death
5	2016	C10M11	Yes	-	Multifocal HGD	No	2 (1/1)	Yes	Yes, ER (m2-EAC)	1 APC	12 mo, 1 endo	Recurrent lesion and ER/RFA (sm2, R1)	Yes (T1bN1M0)	Curative surgery, alive

Abbreviations: APC – argon plasma coagulation; BE – Barrett’s esophagus; C-RFA – circumferential RFA; EAC – esophageal adenocarcinoma; endo – endoscopies; ER – endoscopic resection; F-RFA – focal RFA; FU – follow-up; G3 – poor differentiation; GEJ – gastroesophageal junction; HGD – high-grade dysplasia; IQR – interquartile range; LGD – low-grade dysplasia; LVI – lymphovascular invasion; mo – months; PH – poor healing; PSR – poor squamous regeneration; R1 – irradical resection; SD – standard deviation

**Table S5. Risk factors for esophageal stenosis**

	No stenosis N = 1176	Stenosis N = 210	P-value
Circumferential extent of BE, cm, median (p25-p75)	2 (0-5)	3 (1-7)	<0.01
Maximum extent of BE, cm, median (p25-p75)	5 (3-7)	6 (4-9)	<0.01
Reflux esophagitis at baseline, n (%)	40 (3)	9 (4)	0.52
Prior ER, n (%)	705 (60)	165 (79)	<0.01
Length of prior ER, mm, median (p25-p75) <sup>1</sup>	20 (15-26)	25 (20-40)	<0.01
Circumferential extent of prior ER, cm, median (p25-p75) <sup>2</sup>	30 (25-50)	37 (24-50)	<0.01
Total number of ER specimen, n, median (p25-p75) <sup>3</sup>	2 (1-3)	3 (2-5)	<0.01

1: 88 were missing

2: 323 were missing

3: 5 were missing

Abbreviations: BE – Barrett’s esophagus; ER – endoscopic resection

**Table S6. Recurrent NDBE**

		<b>BE tongues N = 27</b>	<b>BE islands N = 84</b>
FU before NDBE	Duration after treatment, mo, median (IQR)	33 (24-48)	15 (11-24)
	N endoscopies after treatment, median (IQR)	3 (2-3)	2 (1-2)
	Patients with IM in cardia before recurrent NDBE, n (%)	3 (11)	4 (5)
Recurrent NDBE	Extent of BE, median (IQR)	COM2 (0-1; 2-3)	Diminutive islands
Outcomes after NDBE	Treatment, n (%)	5 (19); all RFA	65 (77); all APC
	Surveillance, n (%)	22 (81)	19 (23)
	Duration of surveillance, median (IQR)	20 (10-30)	24 (18-30)
	Progression to LGD, n (%)	1 (5)	0
	Progression to HGD/EAC, n (%)	0	0

*Abbreviations: BE – Barrett’s esophagus; EAC – esophageal adenocarcinoma; FU – follow-up; HGD – high-grade dysplasia; IM – intestinal metaplasia; IQR – interquartile range; LGD – low-grade dysplasia; mo – months; NDBE – non-dysplastic Barrett’s esophagus*

**Table S7. Yield of frequent FU in the first year of FU**

	<b>Frequent FU (t=0,3,6,9,12mo) N=393</b>	<b>Annual FU (t=0, 12mo) N=486</b>	<b>P-value</b>
<b>S6.A Recurrence in the first 30months of FU</b>			
FU duration, mo, median (IQR)	30 (30-30)	30 (29-30)	0.31
Endoscopies, n, median (IQR)	6 (4-7)	3 (2-4)	0.01
Recurrence, n (%)	11 (2.8)	7 (1.4)	0.15
LGD in GEJ	3 (0.8)	1 (0.2)	0.75
Early BE neoplasia	6 (1.5)	5 (1.0)	
Advanced EAC	2 (0.5)	1 (0.2)	
Annual risk, % [95% CI]	0.11 [0.06-0.19]	0.05 [0.02-0.11]	0.15
HR recurrence* [95% CI]	1.57 [0.59-4.14]	Ref	0.37
<b>S6.B Progression during entire FU</b>			
Advanced neoplasia, n (%)	3 (0.7)	2 (0.4)	0.40
Annual risk, % [95% CI]	0.01 [0-0.03]	0.01 [0-0.04]	0.65
HR progression* [95% CI]	0.79 [0.11-5.84]	Ref	0.82

\*Ratio for 3-monthly endoscopies versus annual endoscopies, adjusted for age, gender, length of BE, worst pathology at baseline, reflux stenosis, incident lesion lesion

Abbreviations: BE – Barrett’s esophagus; CI – confidence interval; EAC – esophageal adenocarcinoma; FU – follow-up; HR – hazard ratio; IQR – interquartile range; LGD – low-grade dysplasia; mo - months

**Figure S1. Changes in outcomes over time****S1.A New patients per year**

*The proportion of patients treated for LGD significantly increased over time, with 14% of patients with LGD before 2013 and 36% thereafter (P 0.01; regression coefficient 2.44 [95% CI 0.82-4.07]).*

**S1.B Proportion of patients with ER per year**

*The proportion of ER for HGD patients significantly changed over time, with 47% of HGD patients undergoing ER before 2013 and 59% in the years thereafter (P0.01, regression coefficient 1.54 [95% CI 0.43-2.64]). The proportion for EAC and LGD patients did not differ significantly over time (regression coefficients , 0.01 [95% CI -0.38-0.21] for EAC and 0.28 [95% CI -1.70-2.26] for LGD).*

**S1B. Treatment outcomes per year**

*The proportion of patients with complete eradication of BE did not change over time; 5.2% of patients had successful treatment before 2013 and 6.0% thereafter (P 0.42; regression coefficient 0.01 [95%CI -0.53-0.55]).*

## Figure S2. Three types of recurrences during FU

Recurrences were categorized into three grades; (1) recurrent LGD in a normal appearing cardia; (2) recurrent early neoplasia with curative endoscopic treatment; (3) advanced neoplasia that exceeded boundaries for curative endoscopic re-treatment.

### 2.1 Recurrent LGD in GEJ

*A+B) Initial C12M12 with flat HGD; C+D) CE-BE was achieved after 1 C-RFA; 2 F-RFA and touch-up APC for small remaining BE islands and biopsies from just below the cardia showed absence of IM; E) 2 years after CE-BE was established no endoscopic abnormalities were found, but biopsies from just below the cardia showed LGD. This was reproduced at the first follow-up 6 months later but not during further FU.*

### 2.2 Recurrent early BE neoplasia

*A+B) Initial BE C8M9 with a visible lesion at the 4 o'clock position that contained a well-differentiated mucosal cancer; C) after ER, 1 C-RFA and 2 F-RFA, patients achieved CE-BE and biopsies from the cardia confirmed absence of IM; D+E) 2 years after CE-BE, a small recurrent BE lesion was detected at the 6 o'clock position; and (F+G) ER was performed for a well-differentiated mucosal EAC; (H) CE-BE was re-achieved and sustained afterwards.*

### 2.3 Progression

*A) Initial C6M10 BE with a visible lesion at 3 o'clock; B) EMR was performed for mucosal, well-differentiated EAC, C) followed by circumferential RFA, 2 Focal RFA and touch-up APC for remaining small BE islands. D) CE-BE was achieved. E) 3 years after CE-BE, a recurrent BE lesion was detected at the 7 o'clock position. F+G) ER was performed for sm1-EAC with poor differentiation and positive deep resection margins. Patient was referred for esophagectomy (TxNOM0). Eight years later, recurrent EAC with lymph node metastasis had developed in the gastric tube, for which chemoradiation therapy was performed. Final outcome is pending.*



**Figure S3. Timing and location of recurrences**

T (mo)	0	12	24	36	48	60	72	84	96	108
N	1154	977	611	455	349	317	216	148	67	33

*Timing, location and size of dysplastic BE recurrences according to the initial BE length. The x-axis represents follow-up in months after the last treatment; the y-axis represents the length of the esophagus in cm with 0 being the gastro-esophageal junction. The size in the graph represents the actual size of the recurrence.*

**Figure S4. Timing of recurrent non-dysplastic BE tongues and BE islands**

0	12	24	36	48	60	72	84	96
1154	977	611	455	349	317	216	148	67

*Kaplan Meier curves for recurrent BE tongues and recurrent BE islands. Recurrent BE tongues were detected after median 38 months and BE islands after median 15 months (P 0.02). The annual risk for BE tongues was 0.4% [95% CI 0.2-0.8] in the first 2 years and 1.0% [95% CI 0.7-1.5] thereafter. BE islands had an annual risk of 3.1% [2.4-4.0] in year 1-2 and 0.8% [0.5-1.3] in the years thereafter*

**Figure S5. Recurrent non-dysplastic BE tongues and islands**

#### 5.1 Recurrent NDBE

*A+B+C) Initial BE was C13M17 and ER was performed for a lesion containing HGD, followed by 1 Circumferential and 2 Focal RFA. D+E) CE-BE was achieved and biopsies from just below the cardia confirmed absence of intestinal metaplasia. F+G) 4 years after CE-BE was established, recurrent COM2 BE tongue was found and biopsies showed intestinal metaplasia but no dysplasia. No progression occurred during 2 years follow-up.*

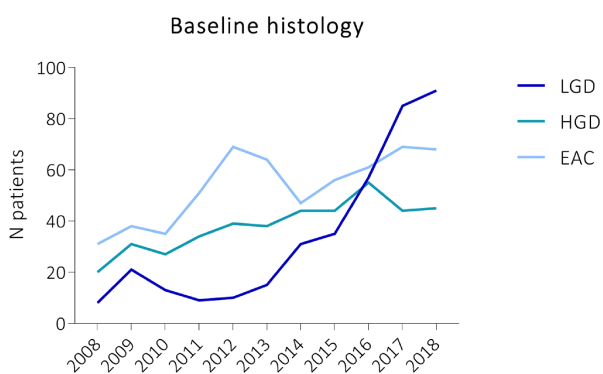
#### 5.2 Tiny islands

*Several examples of tiny BE islands that were found during FU.*

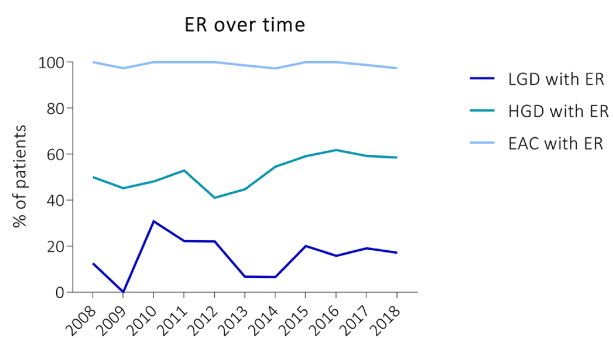
**Figure S6. Risk for recurrence and unrelated death during long-term FU**

*Cumulative incidence curves for recurrence and unrelated death for the RFA durability cohort. Patients with dysplastic recurrence were censored at the moment of detection of recurrence; patients with unrelated death were censored at the date of death; all other patients were censored at the last endoscopic FU.*

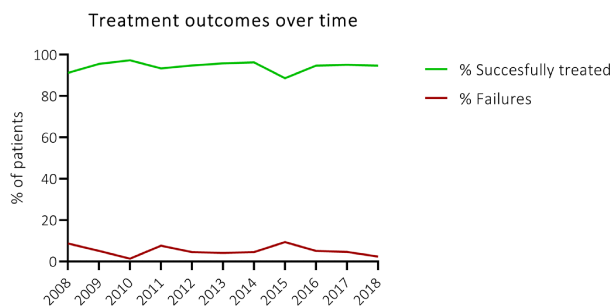
SFig 1A



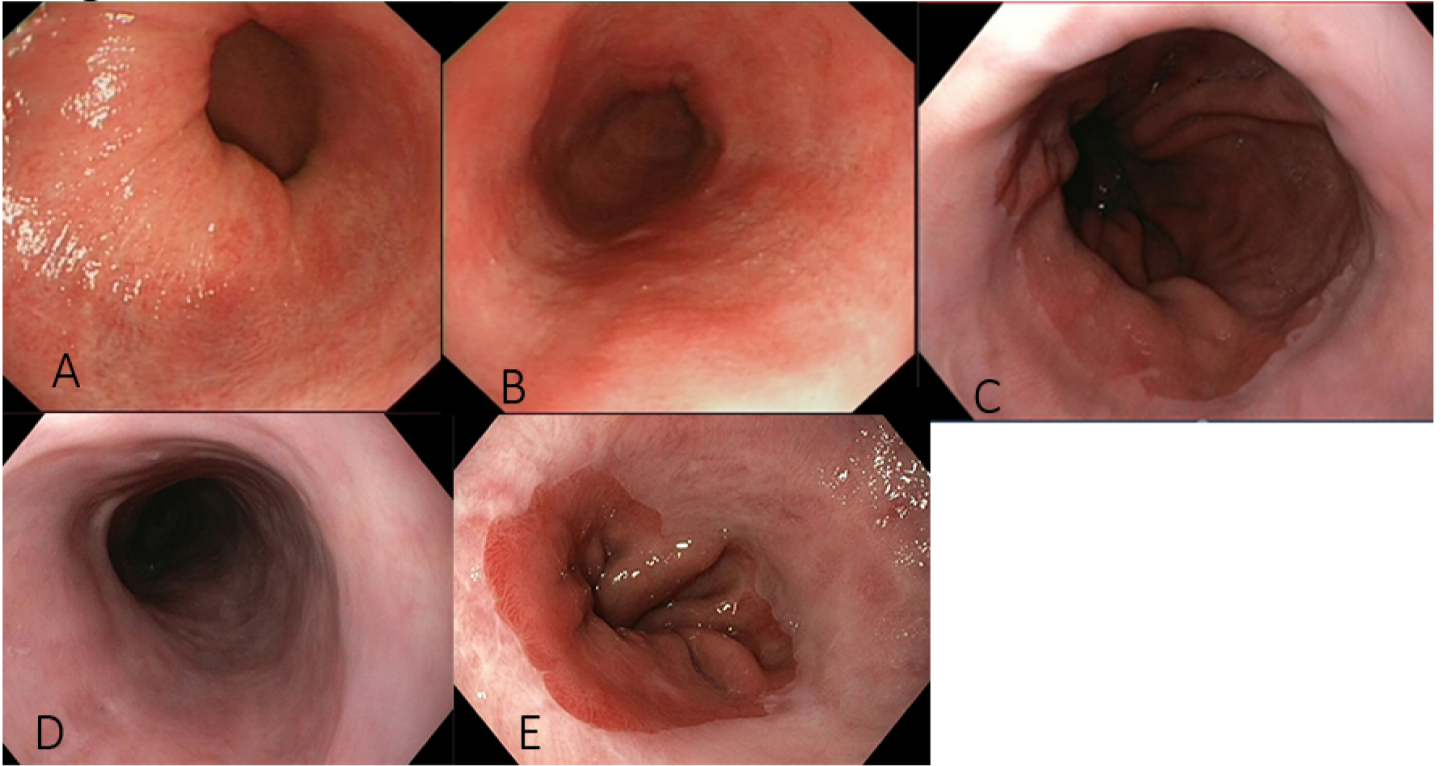
SFig 1B



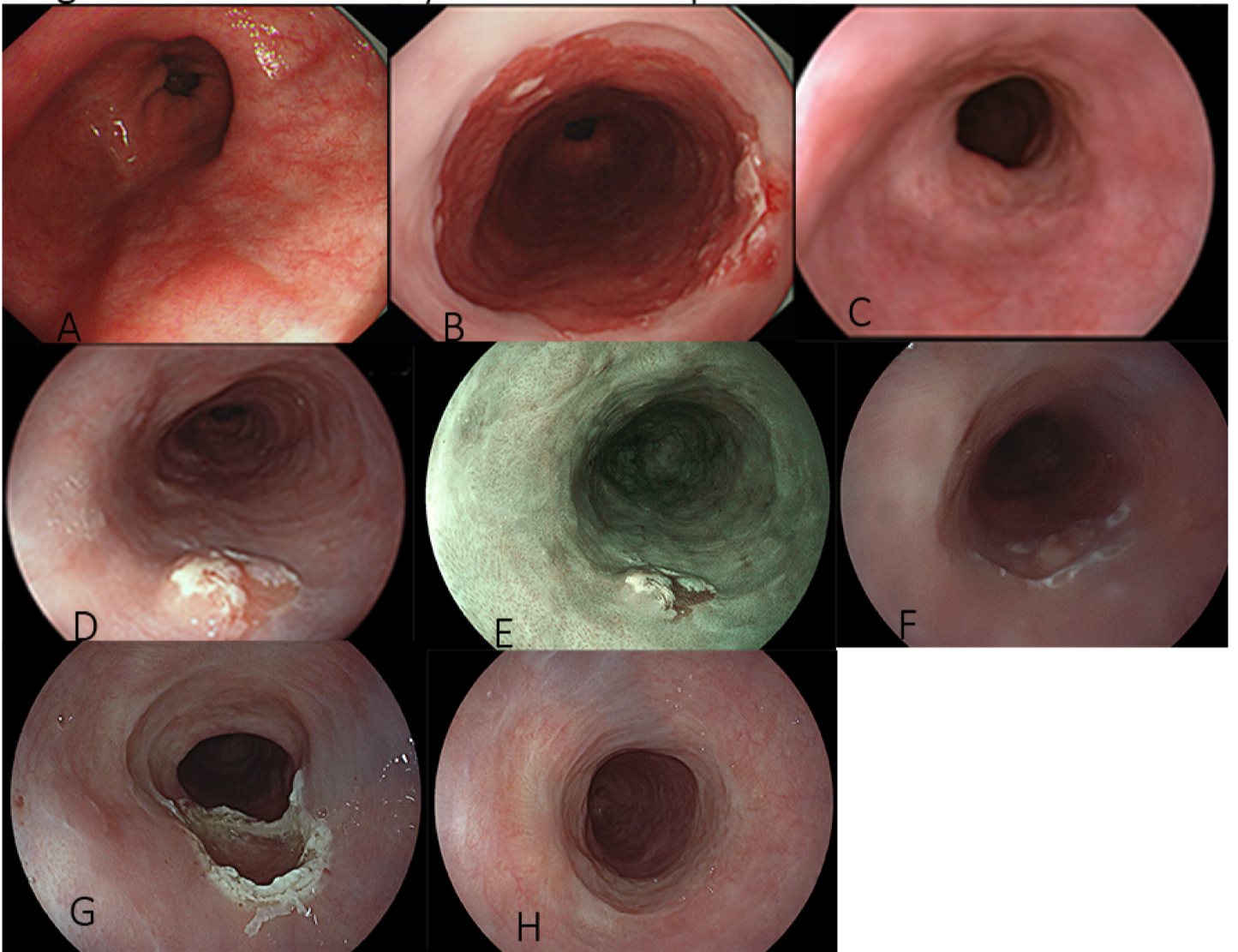
SFig 1C



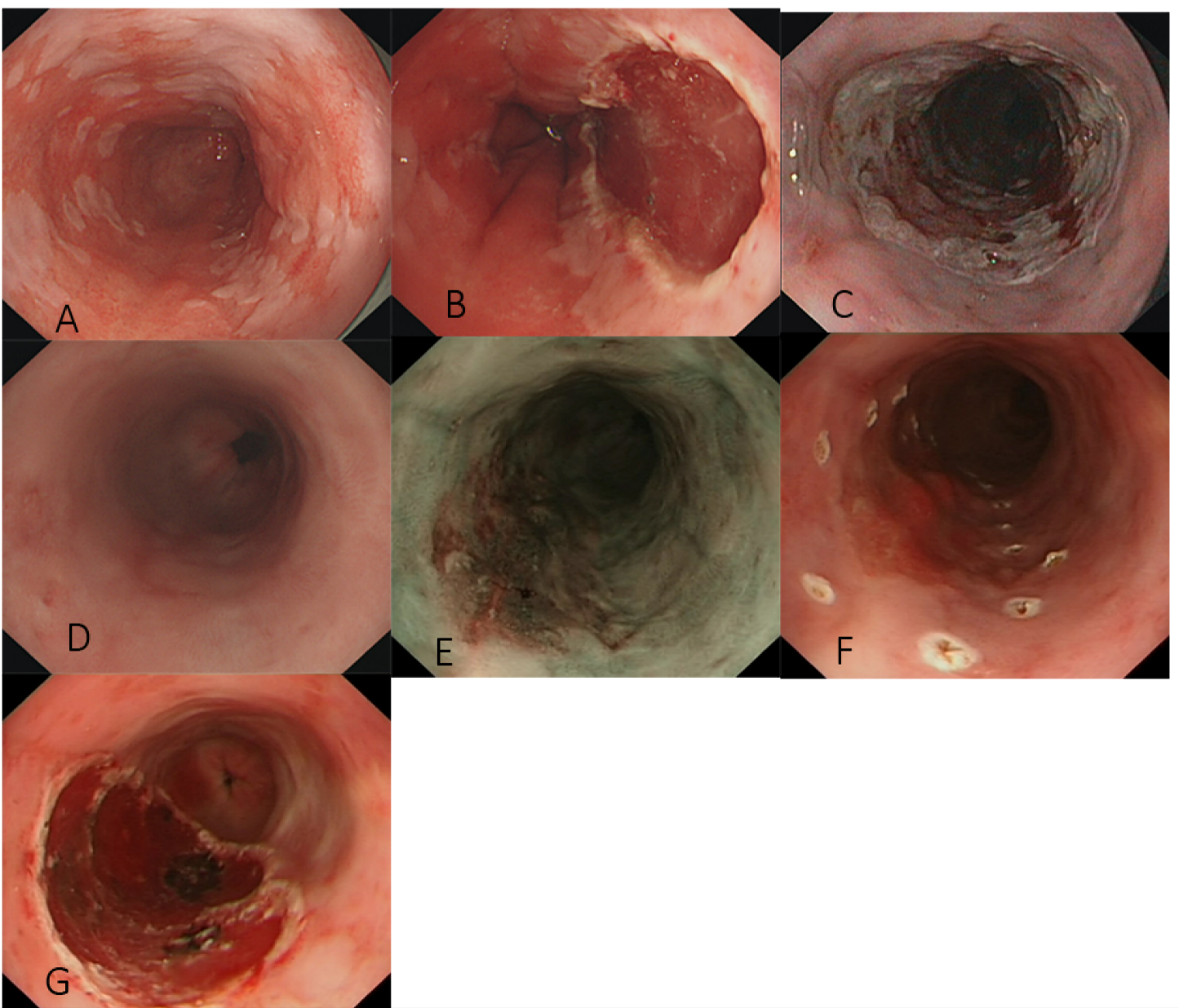
SFig 2.1 recurrent LGD in the cardia

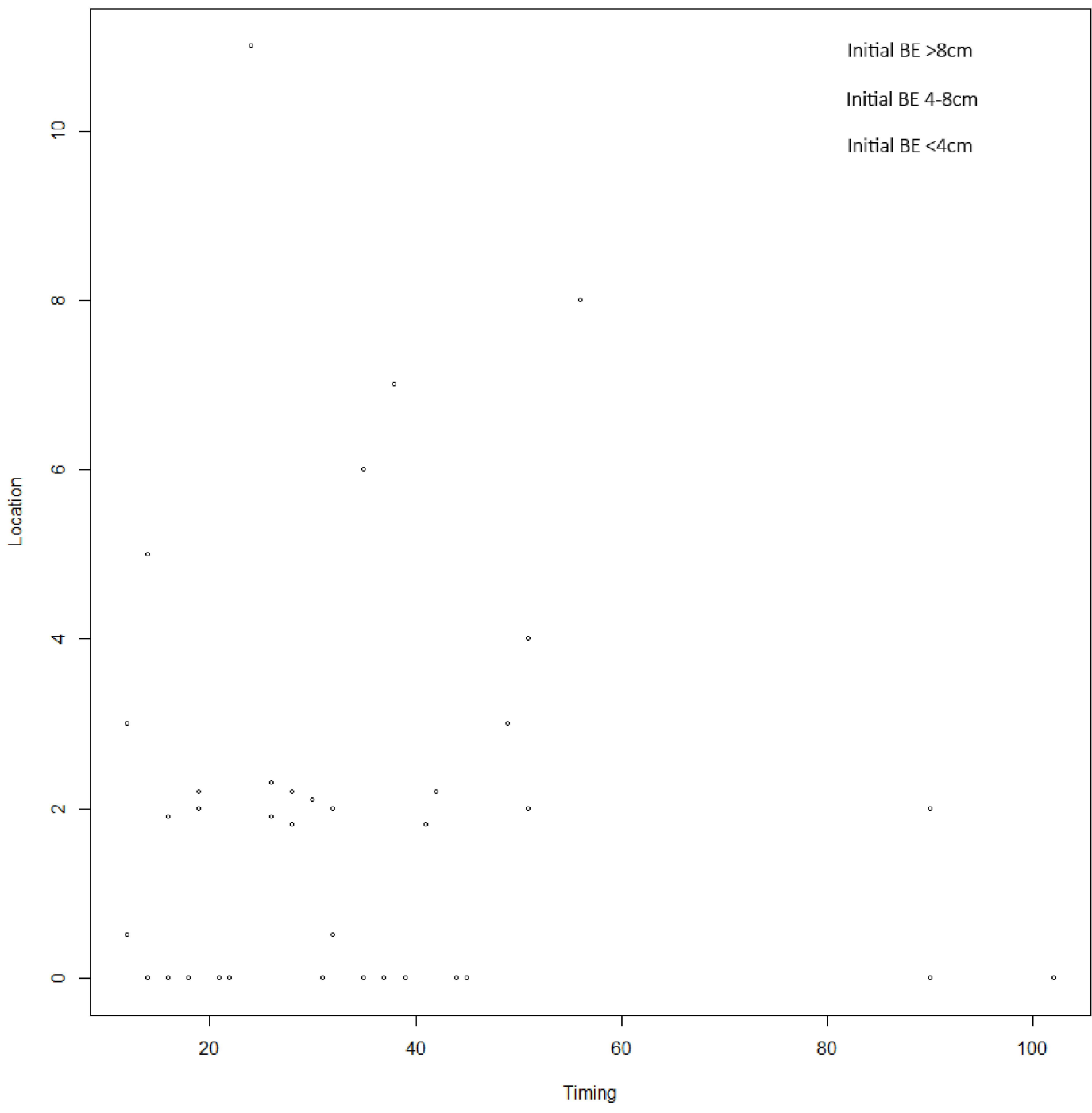


SFig 2.2 Recurrent early Barrett's neoplasia



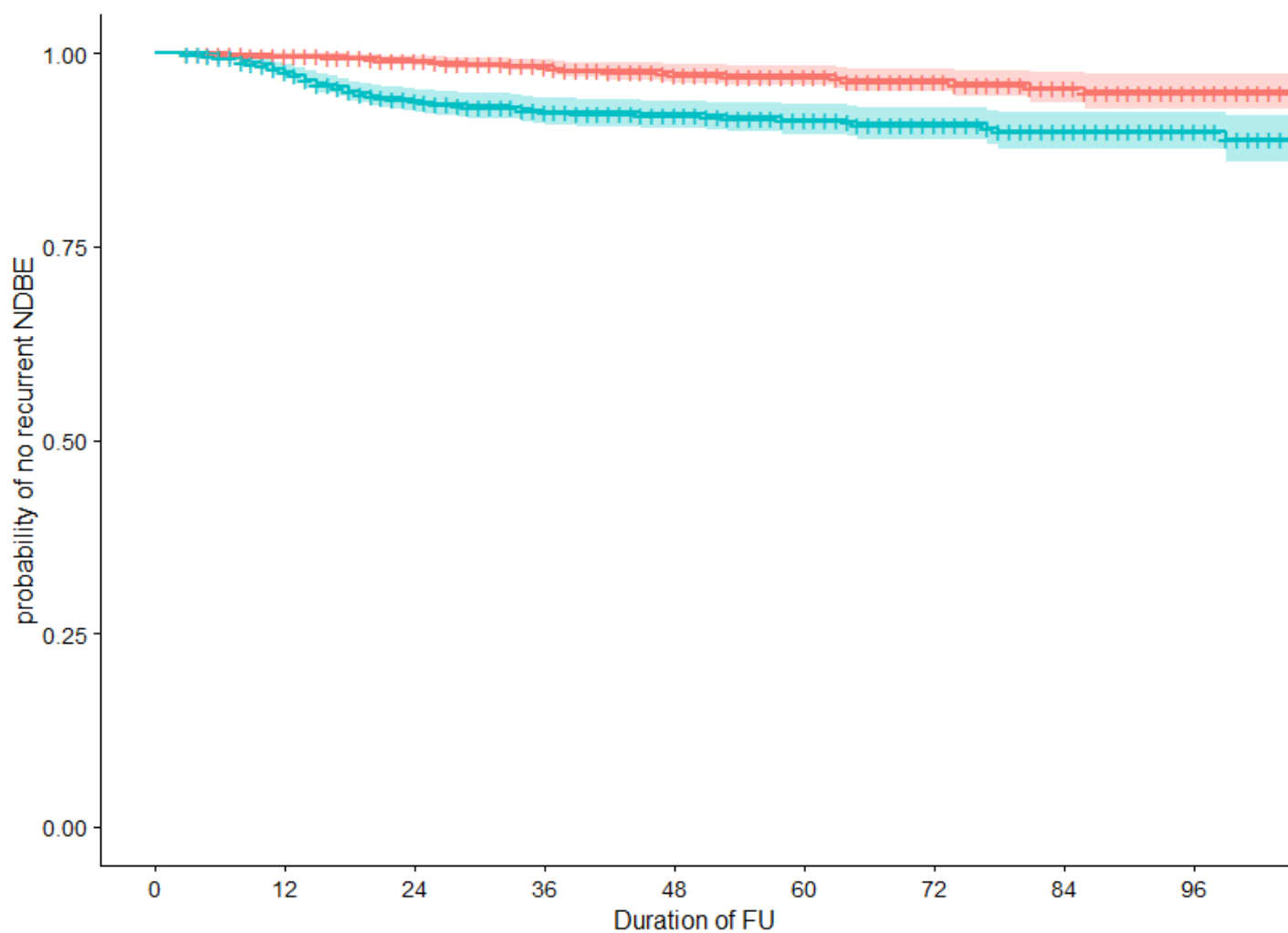
SFig 2.3 Progression to advanced cancer



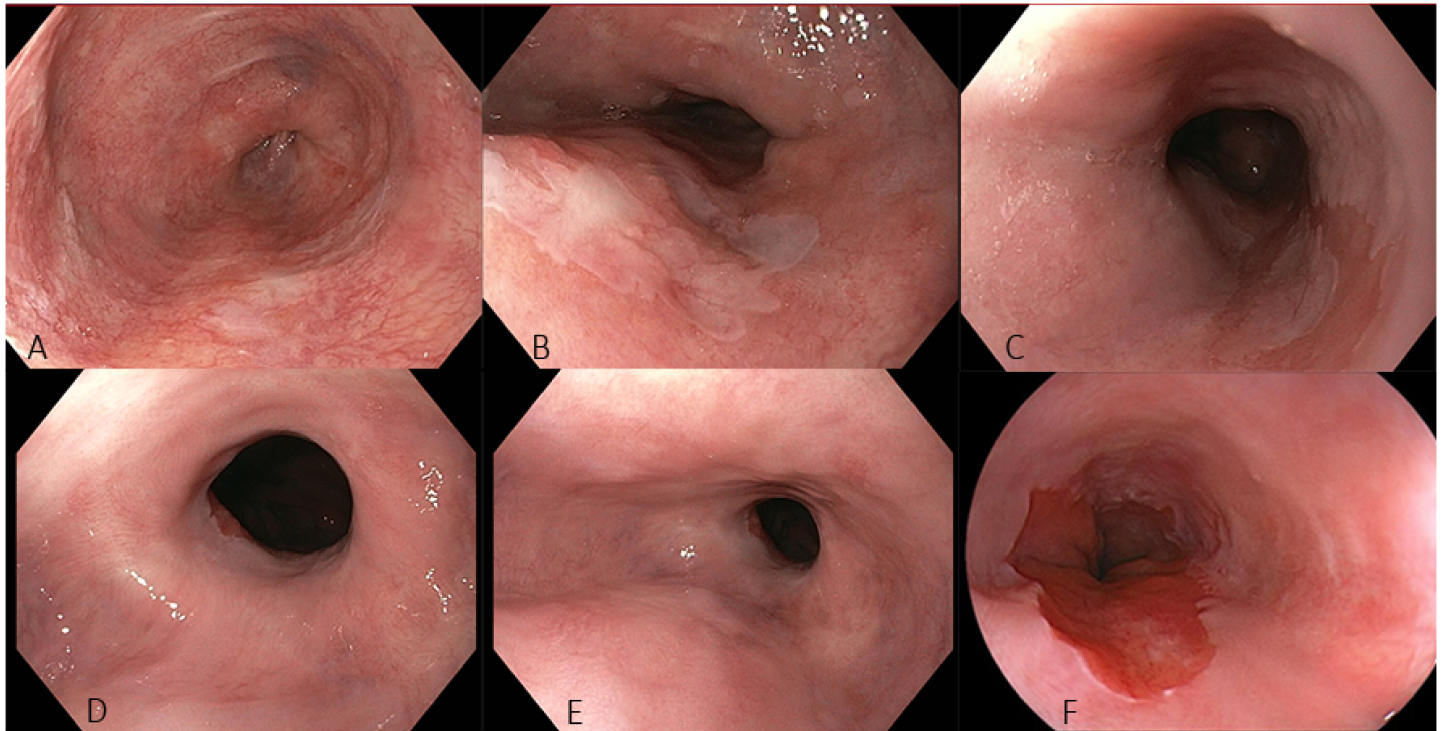


### Recurrent Non-dysplastic BE during FU

Strata + Non dysplastic BE tongues + Diminutive non-dysplastic BE islands



Supplementary Figure 5.1 recurrent non-dysplastic Barrett's epithelium



5.2 Recurrent small Barrett's islands

