

# Faecal carriage, risk factors, acquisition and persistence of ESBL-producing Enterobacteriaceae in dogs and cats and co-carriage with humans belonging to the same household

G. van den Bunt<sup>1,2</sup>, A. C. Fluit<sup>3</sup>, M. P. Spaninks<sup>4</sup>, A. J. Timmerman<sup>4</sup>, Y. Geurts<sup>5</sup>, A. Kant<sup>5</sup>, J. Scharringa<sup>3</sup>, D. Mevius<sup>4,5</sup>, J. A. Wagenaar<sup>4,5</sup>, M. J. M. Bonten<sup>1,2,3</sup>, W. van Pelt<sup>2</sup> and J. Hordijk<sup>4\*</sup>

<sup>1</sup>Julius Center for Health Sciences and Primary Care, University Medical Center Utrecht (UMCU), Utrecht, The Netherlands; <sup>2</sup>Centre for Infectious Disease Control, National Institute for Public Health and the Environment (RIVM), Bilthoven, The Netherlands; <sup>3</sup>Department of Medical Microbiology, University Medical Center Utrecht (UMCU), Utrecht, The Netherlands; <sup>4</sup>Department of Infectious Diseases and Immunology, Faculty of Veterinary Medicine, Utrecht University, Utrecht, The Netherlands; <sup>5</sup>Department of Bacteriology and Epidemiology, Wageningen Bioveterinary Research, Lelystad, The Netherlands

\*Corresponding author. Present address: Centre for Infectious Disease Control, National Institute for Public Health and the Environment (RIVM), Bilthoven, The Netherlands. E-mail: joost.hordijk@rivm.nl

Received 26 April 2019; returned 17 June 2019; revised 6 September 2019; accepted 10 October 2019

**Background:** ESBL-producing Enterobacteriaceae (ESBL-E) are observed in many reservoirs. Pets might play an important role in the dissemination of ESBL-E to humans since they live closely together.

**Objectives:** To identify prevalence, risk factors, molecular characteristics, persistence and acquisition of ESBL-E in dogs and cats, and co-carriage in human–pet pairs belonging to the same household.

**Methods:** In a nationwide study, one person per household was randomly invited to complete a questionnaire and to submit a faecal sample. Dog and cat owners were invited to also submit a faecal sample from their pet. Repeated sampling after 1 and 6 months was performed in a subset. ESBL-E were obtained through selective culture and characterized by WGS. Logistic regression analyses and random forest models were performed to identify risk factors.

**Results:** The prevalence of ESBL-E carriage in these cohorts was 3.8% (95% CI: 2.7%–5.4%) for human participants ( $n=550$ ), 10.7% (95% CI: 8.3%–13.7%) for dogs ( $n=555$ ) and 1.4% (95% CI: 0.5%–3.8%) for cats ( $n=285$ ). Among animals, *bla*<sub>CTX-M-1</sub> was most abundant, followed by *bla*<sub>CTX-M-15</sub>. In dogs, persistence of carriage was 57.1% at 1 month and 42.9% at 6 months. Eating raw meat [OR: 8.8, 95% CI: 4.7–16.4; population attributable risk (PAR): 46.5%, 95% CI: 41.3%–49.3%] and dry food (OR: 0.2, 95% CI: 0.1–0.5; PAR: 56.5%, 95% CI: 33.2%–66.6%) were predictors for ESBL-E carriage in dogs. Human–dog co-carriage was demonstrated in five households. Human–cat co-carriage was not observed.

**Conclusions:** ESBL-E prevalence was higher in dogs than in humans and lowest in cats. The main risk factor for ESBL-E carriage was eating raw meat. Co-carriage in dogs and household members was uncommon.

## Introduction

ESBL-producing Enterobacteriaceae (ESBL-E) have been observed in many reservoirs,<sup>1–5</sup> including companion animals.<sup>6–8</sup> In the Netherlands, approximately 18% of the households have a dog and 23% a cat.<sup>9</sup> The prevalence and risk factors of ESBL-E in dogs and cats has been studied before, but often in a diseased population or in small sample sizes. In the Netherlands, the reported prevalence of ESBL-E was 45% and 55% in 20 healthy and

diarrhoeic dogs, respectively, and 0% and 25% in 20 healthy and diarrhoeic cats, respectively.<sup>10</sup> Pet contact was related to ESBL-E carriage in humans in a previous study,<sup>11</sup> but little is known about transmission and co-carriage in humans and dogs belonging to the same household. In Sweden, identical ESBL-E strains were detected in dogs and humans in 2 out of 22 households studied.<sup>12</sup> In addition, little is known about the persistence of ESBL-producing bacteria in dogs and cats. In one study, 84% of 38 dogs had ESBL-E

carriage at least once in 6 months when tested monthly and faecal shedding of ESBL-E appeared to be highly dynamic over time.<sup>13</sup>

In this study we aimed to identify the prevalence, risk factors, molecular characteristics, persistence and acquisition of ESBL-E in dogs and cats, and co-carriage of these bacteria in human-pet pairs belonging to the same household.

## Materials and methods

### Study design, setting and data collection of the cross-sectional part of the study

We performed a monthly-repeated cross-sectional study among Dutch residents from November 2014 to November 2016. Each month during the study period, a random sample of ~2000 residents, stratified by geographical region and degree of urbanization, including all age groups, was drawn from municipal registries covering the whole Dutch population (~17 million inhabitants), as described earlier.<sup>14</sup> One person per household was invited by regular mail to complete a web-based questionnaire; we enquired whether there was a dog or cat in the household and whether they were willing to participate with the dog or cat (or one of the dogs and cats, with the preference to participate with a dog). If they wanted to participate together with a dog or cat, additional questions about the dog or cat were immediately available to be filled out for the dog or cat (later on also called 'pet').

If the participant agreed to participate, faecal sample kits were provided to the participant's home address, accompanied by a second questionnaire to ensure up-to-date information. The kit contained two pre-labelled sterile tubes for faecal sample collection and instructions regarding the collection and transport (one for the human participant and one for the pet). Transport was via regular mail in a special biological substance category B envelope.

### Study design of the longitudinal part of the study

After 1 and 6 months from the first time of study participation, all phenotypically ESBL-E screen-positive participants and a random selection of non-carriers were invited to provide a faecal sample, accompanied by a third and fourth questionnaire to ensure up-to-date information. If the participant provided a faecal sample from the dog or cat during the cross-sectional part of the study, we asked them to do this again and in the same way as the first time, making longitudinal participation of the pets dependent on the longitudinal participation of the owners.

Questions regarding the pets included antimicrobial usage, hospitalization or visiting a veterinary clinic, having health complaints, predation, coprophagy (in the case of a dog only: ingestion of faeces, either their own or from other animals), feeding patterns, travelling abroad, staying in a kennel and having contact with other animals. In the second, third and fourth questionnaires, some of the questions from the first questionnaire were repeated to ensure up-to-date information about contact with animals, antimicrobial use in the 4 weeks prior to faecal sample collection and eating of raw or undercooked meat in the week prior to faecal sample collection. We sent reminders to the participants after 10 and 20 days in the case of no response.

### ESBL-E detection

Samples were cultured overnight at 37°C on MacConkey agar with 1 mg/L cefotaxime (MacConkey+) (Oxoid, The Netherlands). In addition, 0.5 g of faecal material from each sample was cultured overnight at 37°C in 4.5 mL LB broth with 1 mg/L cefotaxime (LB+). When growth was observed on the MacConkey+ agar, up to five colonies with different morphologies were selected and recultured on MacConkey+ agar. The selective enrichment broths were discarded in these cases. In the absence of growth on the

MacConkey+ plate, the LB+ enrichment broth was cultured on MacConkey+ agar. The isolates were stored in LB broth with 30% glycerol at -80°C until further use. Isolate species identification was performed using MALDI-TOF (Bruker, Germany). Only isolates belonging to *Escherichia coli*, *Klebsiella pneumoniae* and *Enterobacter cloacae* complex, which are the predominant ESBL-E causing infections in humans, were studied further.<sup>15</sup>

The isolates were first checked by specific PCR for the presence of genes encoding CTX-M-group-1, TEM and SHV ESBLs as these are the most common. Isolates negative in the PCR were tested for the presence of ESBL-encoding genes by the Check-MDR CT101 microarray (Check-Points, The Netherlands). ESBL-encoding genes were identified by specific PCRs and subsequent sequencing of the amplification products by conventional ABI sequencing technology (Thermo Fisher, USA and BaseClear, The Netherlands).

For WGS analysis, bacterial DNA was purified using the MO BIO UltraClean Microbial DNA Isolation Kit (QIAGEN, USA) and a library for sequencing with NextSeq (Illumina, USA) was prepared using the Nextera v2 kit (Illumina). Contigs were assembled with SPAdes genome assembler v3.10.1. Core-genome analysis was performed on the assembled contigs. Core-genome alignments were made using Parsnp v1.2.<sup>16</sup> Recombination regions in the alignments were detected and corrected for using Gubbins.<sup>17</sup> Phylogenetic trees were visualized with FigTree (<http://tree.bio.ed.ac.uk/software/figtree/>). The resistance genes, plasmids and multilocus STs were identified by ResFinder, PlasmidFinder and MLST of the Center for Genomic Epidemiology (DTU, Copenhagen, Denmark).<sup>18-20</sup> Sequences of dog isolates were deposited in the European Nucleotide Archive short-read archive, under project number PRJEB31805. Sequences of human isolates were deposited at BioSample, with accession numbers SAMN11494421 to SAMN11494425.

### Data analysis

The prevalence of ESBL-E carriage was calculated for dogs and cats.

The random forest algorithm was used to identify the relative importance of the putative factors in ESBL-E prediction. Random forest is a machine-learning algorithm that produces multiple decision trees based on bootstrapping and merges them together to get a more accurate and stable prediction. One thousand decision trees were grown to form the random forest and a random subset of variables was used at each split point, with 2 out of 25 variables used in each subset. To assess the importance of the variables, we evaluated the accuracy decrease (mean decrease of prediction accuracy by removing the variable in question from the model) and Gini decrease (mean decrease in the Gini index of node impurity; how each variable contributes to the homogeneity of the nodes and leaves in the resulting random forest). Higher decrease of accuracy and Gini index means higher variable importance.<sup>21</sup> The AUC was calculated for the random forest model. An AUC value >0.7 is generally considered useful.<sup>22</sup>

A total of 25 putative risk factors were assessed by chi-squared or Fisher's exact tests and a Benjamini and Hochberg correction for multiple testing was applied to *P* values in order to control for a false discovery rate of 0.15.<sup>23</sup> All *P* values considered significant after Benjamini and Hochberg correction, as well as risk factors described in the literature, were included in univariate logistic regression analyses. Variables with a *P* value ≤0.10 in univariate analyses were selected for multivariable regression models built in a backward stepwise fashion. Variables showing a *P* value <0.05 and variables of which the covariates changed ≥10% remained in the model. Biologically plausible interactions between variables were assessed and if *P* values were <0.05 the interaction was added to the model.

The population attributable risk (PAR) among dogs, which is the proportion of ESBL-E carriers that would be prevented following elimination of the exposure, assuming the exposure is causal, was calculated. The adjusted ORs were used from the final multivariable logistic regression model for the variables significantly associated with ESBL-E carriage and the prevalence

of exposure in the cases. Similarly, the 95% CIs were calculated based on the 95% CIs of the adjusted ORs.<sup>24</sup>

Missing values (2.5%–14%) in the dataset were imputed by chained equations, imputing and pooling 10 imputations.<sup>25</sup> A sensitivity analysis was performed comparing the imputed data with complete case analyses.

To determine co-carriage of ESBL-E within households, we defined whether there was any association between human and pet co-carriage. Based on the observed prevalence of ESBL-E in humans and dogs, and assuming co-carriage in humans and dogs was uncorrelated, we determined the probability that both human and dog harboured ESBL-E (regardless of the ESBL genes) in a given household, as was done before.<sup>26</sup> Likewise, within the households in which both human and dog were ESBL-E positive, we calculated the expected number of households sharing the same ESBL genes based on the variance in ESBL genes observed in humans and dogs. The expected values were compared with the observed values by binomial probability testing.

Analyses were performed in R v3.2.2 with the mice (v3.1.0) and randomForest packages (v4.6-14). Binomial probability testing was performed in Stata 13 (StataCorp LP, College Station, TX, USA).

## Ethics

This study received ethics approval from the Medical Research Ethics Committee of the University Medical Center, Utrecht (WAG/om/14/012490). Informed consent was obtained from all participants. All participants gave consent and in the case of children, parents gave consent. All animal sampling was performed within the guidelines of the Dutch Animals Act (stb-2011-345) and the Animal Welfare Body Utrecht, meaning no additional license was required.

## Results

In total, faecal samples from 555 dogs and 285 cats were received. Of the dogs, 265 ( $N=539$ ; 49.2%) were male and 265 ( $N=526$ ; 50.4%) had contact with other animals. There were 95 ( $N=478$ ; 19.9%) and 372 ( $N=542$ ; 68.6%) dogs who had been seen by a vet in the 4 weeks and the 12 months prior to faecal sample collection, respectively. In addition, 34 ( $N=476$ ; 7.1%) and 74 ( $N=539$ ; 13.7%) had received antimicrobials in the past 4 weeks and 6 months prior to faecal sample collection, respectively (Table 1).

For cats, 125 ( $N=282$ ; 44.3%) were male, 165 ( $N=253$ ; 65.2%) had contact with other animals and 25 ( $N=238$ ; 10.5%) had visited a vet in the past 4 weeks. Antimicrobial use was reported in 12 ( $N=237$ ; 5.1%) and 30 ( $N=275$ ; 10.9%) in the 8 weeks or 6 months prior to sample collection, respectively (Table S1, available as [Supplementary data](#) at JAC Online).

### Prevalence of ESBL-E carriage

ESBL-E were detected in samples of 59 dogs (10.6%, 95% CI: 8.3%–13.6%) and 4 cats (1.4%, 95% CI: 0.5%–3.8%). ESBL-E carriers were distributed equally over the country, without discernible differences in the degree of urbanization (Table S2). The number of ESBL-E per gram of faeces was variable and did not have a normal distribution. The median was  $6.1 \times 10^4$  (IQR:  $9.9 \times 10^3$ – $3.3 \times 10^5$ ).

### Risk factors in dogs

In random forest analyses, ‘eating of raw meat’ was the best predictor for ESBL-E carriage in dogs, followed by the absence of ‘eating dry feed’ (Figure S1). The AUC of the random forest model was 0.78, meaning the random forest is useful for prediction (>0.70).

Risk factors for carriage with ESBL-E and the associated PAR for dogs were ‘eating raw meat’ (OR: 8.8, 95% CI: 4.7–16.4; PAR: 46.5, 95% CI: 41.3–49.3), ‘walking the dog in the forest’ (OR: 2.2, 95% CI: 1.1–4.6; PAR: 42.5, 95% CI: 7.1–61.0) and ‘hospitalized or visited a vet in the past 4 weeks’ (OR: 2.0, 95% CI: 1.0–3.9; PAR: 17.0, 95% CI: 0.3–25.3). ‘Eating dry feed’ appeared protective for ESBL-E carriage in dogs (OR: 0.2, 95% CI: 0.1–0.5; PAR: 56.5, 95% CI: 33.2–66.6). Complete case analysis did not give significantly different results compared with the analysis on the imputed data (data not shown).

Risk factors could not be determined for cats.

### Co-carriage in humans and pets

There were 550 pairs of faecal samples from human participants and dogs and 282 pairs from human participants and cats (for five dogs and three cats, a faecal sample from the owner was missing). The prevalence of ESBL-E carriage in these cohorts was 3.8% (95% CI: 2.7%–5.4%) for human participants, 10.7% (95% CI: 8.3%–13.7%) for dogs and 1.4% (95% CI: 0.5%–3.8%) for cats. There was no co-carriage found between cat owners and cats. In seven households, both the human participant and the dog were ESBL-E positive, of which five harboured the same ESBL gene. The isolates from the five human participant–dog pairs carrying the same ESBL gene were subjected to WGS. The core-genome cluster analysis is shown in Figure 1. In three human participant–dog pairs, no distinction can be made between the human participant and the dog isolates, based on the core genome. Additionally, if multiple isolates were selected from one dog sample, no distinction could be made between isolates, indicating low within-sample diversity.

Given the 550 households and the observed ESBL-E prevalence in humans and dogs, the expected prevalence of both being ESBL-E positive (regardless of harbouring the same ESBL gene) within a household in a one-to-one relationship based on chance was 0.4%. This corresponds to 2 out of 550 households, which is less than the observed 7 households in which both were ESBL-E positive ( $P$  value=0.013). Within these seven households, there were five in which the human and the dog carried identical ESBL genes. By taking the variance of the ESBL genes into account, the chance of harbouring the same ESBL gene in cases where both were ESBL-E positive was 0.19%. Therefore, 1.3 out of 7 households were expected to be harbouring identical ESBL genes ( $P$  value=0.004).

### ESBL gene diversity in dogs and cats and comparison with humans

In faecal samples of 28 (47%) of 59 ESBL-E-positive dogs, multiple ESBL allele variants (maximum of three) were detected and there were 90 different isolates in total. Potential duplicates within a sample were excluded (e.g. multiple  $bla_{CTX-M-1}$  genes within one sample were counted as one). The most frequently observed ESBL gene was  $bla_{CTX-M-1}$  ( $n=32$ ; 35.6%; 95% CI: 25.9%–46.4%), followed by  $bla_{CTX-M-15}$  ( $n=19$ ; 21.1%; 95% CI: 13.4%–31.2%),  $bla_{CTX-M-32}$  ( $n=10$ ; 11.1%; 95% CI: 5.7%–19.9%),  $bla_{SHV-12}$  ( $n=8$ ; 8.9%; 95% CI: 4.2%–17.3%) and  $bla_{TEM-52}$  ( $n=7$ ; 7.8%; 95% CI: 3.5%–15.9%) (Figure 2). Among 24 isolates from colonized dog owners,  $bla_{CTX-M-15}$  ( $n=15$ ; 62.5%; 95% CI: 40.8%–80.4%) was most prevalent and the distribution of ESBL genes differed

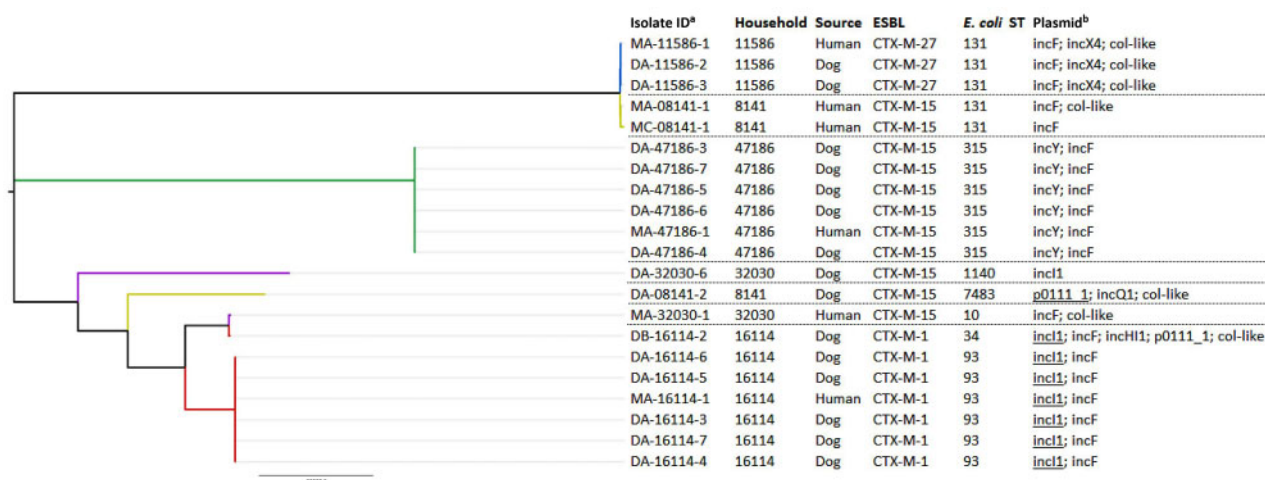
**Table 1.** Descriptive statistics, univariate and multivariate logistic regression and PAR of ESBL-E in dogs

Variable	ESBL-E negative <i>n</i> =496 (89.4%)	ESBL-E positive <i>n</i> =59 (10.6%)	Univariate OR (95% CI)	Multivariate OR (95% CI)	PAR (95% CI)
Age, years					
0–5	227 (47.2)	26 (44.1)			
>5	254 (52.8)	33 (55.9)			
Season					
autumn	164 (33.4)	18 (30.5)	ref.		
spring	130 (26.5)	19 (32.2)	1.3 (0.7–2.6)		
summer	93 (18.9)	12 (20.3)	1.2 (0.5–2.6)		
winter	104 (21.2)	10 (16.9)	0.9 (0.4–2.2)		
Number of dogs in the household					
1	377 (78.1)	40 (67.8)			
>1	106 (21.9)	19 (32.2)			
Gender					
female	245 (51.0)	29 (49.2)			
male	235 (49.0)	30 (50.8)	1.1 (0.6–1.9)		
Dog breed					
crossbred	166 (36.4)	15 (26.8)			
purebred	290 (63.6)	41 (73.2)			
Contact with other dogs					
no	236 (50.3)	25 (43.9)			
yes	233 (49.7)	32 (56.1)			
Stayed in kennel in past 12 months					
no	389 (81.4)	51 (86.4)			
yes	89 (18.6)	8 (13.6)			
Abroad in the past 12 months					
no	397 (82.4)	44 (74.6)			
yes	85 (17.6)	15 (25.4)	1.6 (0.8–3.0)		
Walking the dog in dog-walking area					
no	363 (75.5)	40 (67.8)			
yes	118 (24.5)	19 (32.2)			
Walking the dog in forest					
no	193 (40.1)	13 (22.0)			
yes	288 (59.9)	46 (78.0)	2.4 (1.2–4.5)	2.2 (1.1–4.6)	42.5 (7.1–61.0)
Walking the dog in area with livestock					
no	437 (90.9)	50 (84.7)			
yes	44 (9.1)	9 (15.3)			
Swimming					
no	367 (76.3)	38 (64.4)			
yes	114 (23.7)	21 (35.6)	1.8 (1.0–3.2)		
Walking the dog without leash					
≤50% of time	278 (57.7)	32 (54.2)			
>50% of time	204 (42.3)	27 (45.8)			
Coprophagy (eating stools)					
no	341 (70.9)	40 (67.8)			
yes	140 (29.1)	19 (32.2)			
Fed with dry feed (kibble)					
no	26 (5.4)	15 (25.4)			
yes	456 (94.6)	44 (74.6)	0.2 (0.1–0.3)	0.2 (0.1–0.5)	56.5 (33.2–66.6)
Fed with wet food					
no	390 (80.9)	46 (78.0)			
yes	92 (19.1)	13 (22.0)			

Continued

**Table 1.** *Continued*

Variable	ESBL-E negative n=496 (89.4%)	ESBL-E positive n=59 (10.6%)	Univariate OR (95% CI)	Multivariate OR (95% CI)	PAR (95% CI)
Fed with raw meat					
no	438 (90.9)	28 (47.5)			
yes	44 (9.1)	31 (52.5)	11.0 (6.1–20.1)	8.8 (4.7–16.4)	46.5 (41.3–49.3)
Hospitalized/consulted vet in the past 12 months					
no	158 (32.7)	12 (20.3)			
yes	325 (67.3)	47 (79.7)	1.9 (1.0–3.7)		
Antimicrobial usage in the past 6 months					
no	415 (86.3)	50 (86.2)			
yes	66 (13.7)	8 (13.8)	1.0 (0.5–2.2)		
Catch prey					
no	377 (80.7)	51 (87.9)			
yes	90 (19.3)	7 (12.1)			
Hospitalized/consulted vet in the past 4 weeks					
no	348 (81.9)	35 (66.0)			
yes	77 (18.1)	18 (34.0)	2.3 (1.2–4.3)	2.0 (1.0–3.9)	17.0 (0.3–25.3)
Stayed in kennel in past 4 weeks					
no	396 (93.4)	46 (86.8)			
yes	28 (6.6)	7 (13.2)			
Abroad in the past 4 weeks					
no	410 (96.9)	52 (98.1)			
yes	13 (3.1)	1 (1.9)	0.6 (0.1–4.8)		
Antimicrobial usage in the past 8 weeks					
no	393 (92.9)	49 (92.5)			
yes	30 (7.1)	4 (7.5)	1.1 (0.4–3.2)		

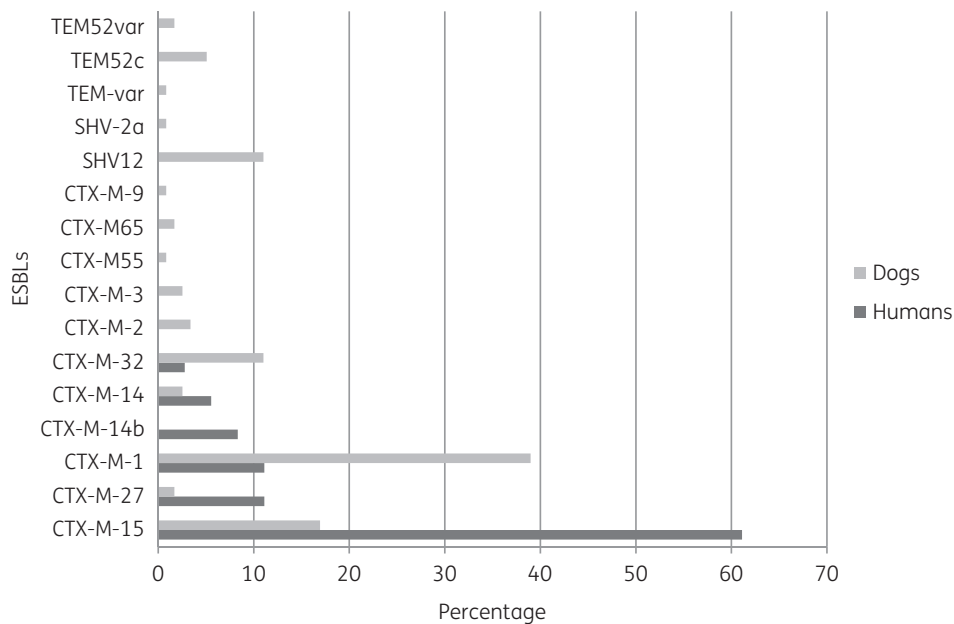


**Figure 1.** Core-genome cluster analysis of isolates from dogs and owners with matching ESBLs. Each household is represented by a colour. <sup>a</sup>DA/MA, initial measurement; DB/MB, second sample 1 month after selection of participants; MC, third sample 6 months after selection of participants. <sup>b</sup>All plasmids identified. Underlined plasmids harboured both the PCR-based replicon typing reference gene and ESBL gene on the same contig. This figure appears in colour in the online version of *JAC* and in black and white in the print version of *JAC*.

compared with dog isolates (Figure 2). ESBL gene distribution was comparable between dog owners and non-dog owners (Figure S2). All four ESBL-E from cats harboured *bla*<sub>CTX-M-1</sub>.

**Longitudinal results for dogs and cats**

We received samples from 80 dogs and 38 cats after 1 month and from 61 dogs and 28 cats after 6 months (60 dogs had samples at



**Figure 2.** Distribution of ESBL types in participating dog owners and dogs at baseline. The distribution of ESBL genes in isolates from dog owners differed compared with those from dogs.

all three timepoints). The prevalence of ESBL-E carriage was comparable at each timepoint [being 11.7% ( $N=7$ ), 11.7% ( $N=7$ ) and 15.0% ( $N=9$ ), respectively], as was the predominance of *bla*<sub>CTX-M-1</sub> (Table 2). Persistence of carriage was 57.1% at 1 month and 42.9% at 6 months. For those that had lost carriage at 1 month, ESBL-E carriage was detected in 13.2% at 6 months (Figure 3).

Although the number of positive samples at each timepoint was more or less the same, the specific dogs or ESBL genes involved were not. If dogs were positive at consecutive samplings, in most cases other ESBL-E or another combination of different ESBL-E were observed, indicating transient carriage. Since this is an observational study and we only screened for the ESBL gene and not the *E. coli* ST or plasmid, it cannot be determined whether recurring ESBL genes (mainly *bla*<sub>CTX-M-1</sub>) either persisted, were present due to recurring uptake, or appeared completely independent from prior presence.

## Discussion

In this nationwide cross-sectional and longitudinal study of ESBL-E carriage in 555 dogs and 285 cats, the observed prevalence was 10.6% and 1.4%, respectively. The prevalence of ESBL-E in dogs was higher than the observed prevalence of 4.5% in humans from our previous study<sup>14</sup> collected in the same households at the same time, indicating that dogs are a larger reservoir for ESBL-E when looking at the general population of humans and dogs. A study performed in the UK (2008–09) observed an ESBL-E prevalence of 1.9% in vet-visiting dogs, which is considerably lower than the observed prevalence in healthy dogs in the current study.<sup>27</sup>

Random forest analysis indicated that being fed with raw meat was most predictive for ESBL-E carriage. In a study of 73 healthy dogs from the UK, ESBL production was only observed in one *E. coli* isolate, but the authors proved that being fed with raw meat was a risk factor for antimicrobial resistance in general.<sup>28</sup> A study in dogs

visiting a veterinarian also indicated that eating raw poultry meat was a risk factor for ESBL carriage.<sup>27</sup> Also, in 36 cats, raw pet feed was associated with ESBL carriage.<sup>29</sup> ESBL has been detected in raw meat as well.<sup>30–32</sup> The fact that being fed with dry feed (kibble) is a protective factor in our study is probably due to the inverse association between being fed with dry feed and being fed with raw meat. The observed risk factors ‘walking the dog in the forest’ and ‘walking the dog in an area with livestock’ are probably related to exposure to other animals or their faecal material. Although we did not identify coprophagic behaviour as a risk factor in our analyses, a previous study in 78 dogs and 22 cats attending a veterinary hospital did for resistance to ampicillin, amoxicillin/clavulanic acid, cephamycin, ciprofloxacin, streptomycin and trimethoprim/sulfamethoxazole.<sup>33</sup> Being hospitalized or having consulted a vet in the 4 weeks prior to sampling was not observed as a risk factor before. We did not observe antimicrobial usage of the animals as a risk factor, as has been observed previously.<sup>27</sup> We did not find discernible differences in the prevalence of ESBL-E between the degrees of urbanization. This might be explained by the fact that the observed risk factors are not related to the degree of urbanization (e.g. being fed with raw meat).

We presented that from the seven dogs initially positive, 57.1% were still positive after 1 month and 42.9% after 6 months. Furthermore, we observed an acquisition rate of 13.2% after 6 months in dogs initially negative. Another Dutch study screened for ESBL-E and AmpC in faecal samples from 38 dogs monthly for 6 months; 32 dogs (84%) had at least one faecal sample positive for ESBL/AmpC during the study period.<sup>13</sup> That study also indicated that the faecal carriage of ESBLs in dogs had a transient character. However, by comparing both studies, it should be noted that in the present study AmpC-type  $\beta$ -lactamases were not included in the calculations.

In 5 out of 550 households, both the human and dog samples were positive for the same ESBL gene, which was more than

**Table 2.** ESBLs in dogs from the longitudinal part

	Dog ID																
Timepoint	2661	3154	7183	8141	9709	11027	13664	15110	15218	15371	15710	16114	25440	27659	30208	38556	49409
Baseline	ND	CTX-M-65 TEM-52c	ND <sup>a</sup>	CTX-M-15 <sup>b</sup>	—	CTX-M-1 SHV-12	—	CTX-M-1 CTX-M-15	—	CTX-M-1 CTX-M-15	—	CTX-M-1	—	CTX-M-55	CTX-M-1	CTX-M-1 CTX-M-15	CTX-M-15
1 month	CTX-M-14	X	CTX-M-1 CTX-M-15	—	—	CTX-M-1 CTX-M-32 SHV-12	SHV-12	CTX-M-1 CTX-M-15	—	CTX-M-1 CTX-M-32	ND	CTX-M-1	—	—	—	CTX-M-2	CTX-M-1
6 months	ND	—	CTX-M-1	—	CTX-M-1	CTX-M-1 CTX-M-32	—	CTX-M-1 SHV-12 TEM-52c	CTX-M-1	X	CTX-M-1 TEM-52c	—	CTX-M-1	—	CTX-M-1	X	CTX-M-14

ND, not determined; —, sample negative in culture; X, sample not submitted by participant.

<sup>a</sup>Sample positive in culture, no ESBL gene was observed.

<sup>b</sup>Human sample also positive for ESBL.

expected based on chance. Although co-carriage in human-dog pairs was demonstrated, having a dog was not observed as a risk factor in our previous study<sup>14</sup> and there was no significant difference in ESBL-E prevalence between dog owners and people not owning a dog. In three out of the five pairs, the human and dog isolates could not be distinguished based on core-genome and plasmid content. In total, 59 dogs had a positive faecal sample, indicating humans within these households were exposed. This means that in only 5% of the exposed households we have observed a match in ESBL-E carriage between humans and dogs, which is relatively low. This finding is also in line with a pooled analysis on molecular relatedness of ESBL/AmpC-producing *E. coli* in humans, animals, food and the environment, in which some overlap was observed in various reservoirs, but most reservoirs had a distinct distribution in gene frequency.<sup>30</sup> The co-carriage rate might be different in other (high prevalence) countries and although data on ESBLs in relation to co-carriage with owners are scarce, a study conducted in Brazil, screening 134 human-dog pairs, demonstrated that there were 42 pairs in which MDR *E. coli* strains were isolated from both and in 9.5% (4/42) of the pairs identical PFGE profiles were detected, denoting the sharing of strains.<sup>34</sup>

Although we collected 285 faecal samples from cats, we were not able to do risk factor analyses due to the low number of ESBL-E-positive cats. A limitation is that pets were only included in the longitudinal study if a household member was also included. In addition, since WGS was only performed in dogs in which we observed co-carriage within the household, we were not able to calculate the chance of co-carriage given the chance of sharing the combination of the same ESBL genes, STs and plasmids. However, the more characteristics are added to the calculation, the higher the diversity and therefore the lower the chance of co-carriage within households will be.

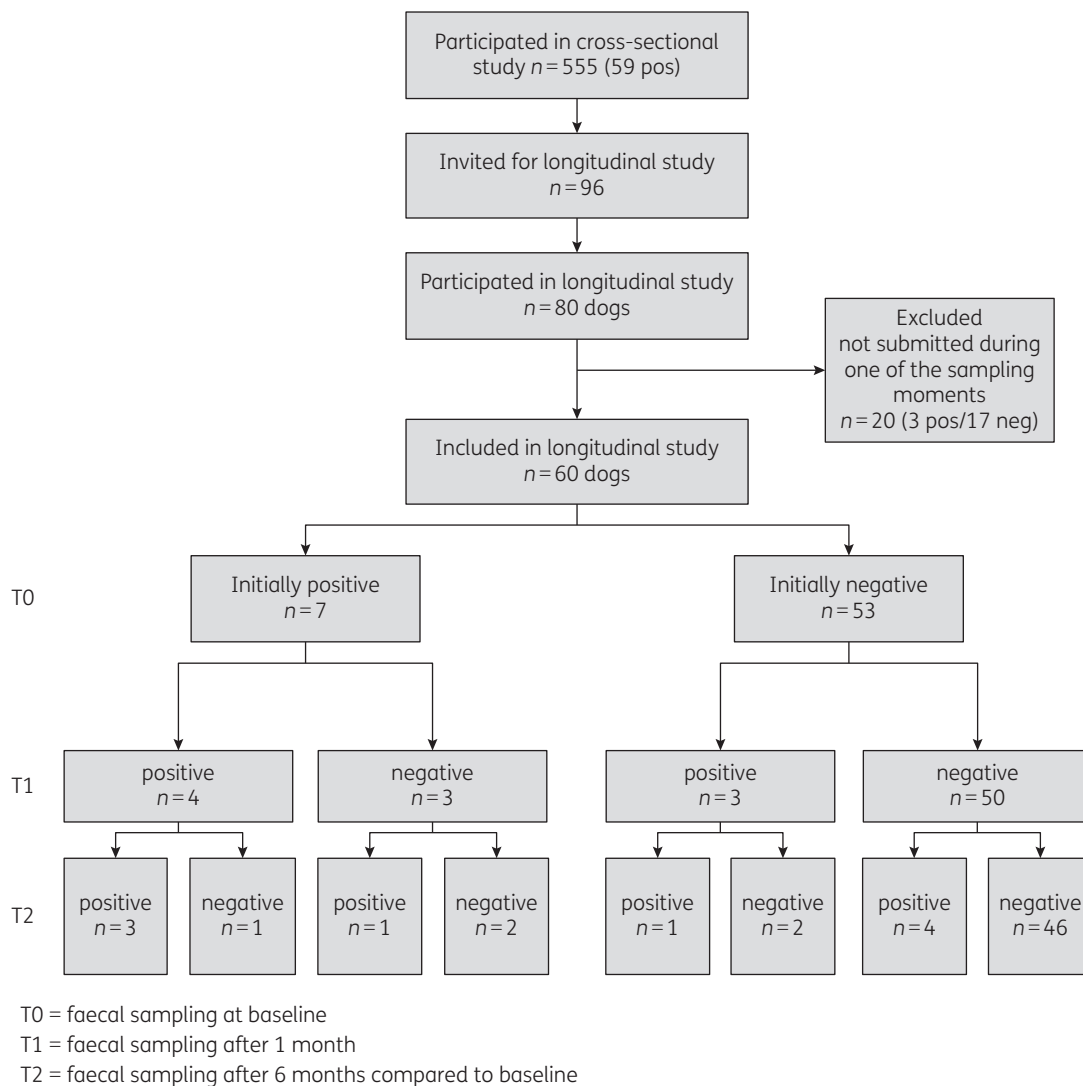
In conclusion, the prevalence of ESBL-E in healthy dogs from the community is high, while it is low in cats (10.6% and 1.4%, respectively). Being fed with raw meat is the main risk factor in dogs. The acquisition rate of ESBL-E in dogs was 13.2% after 6 months. Furthermore, we indicated there is evidence of co-carriage in dogs and humans belonging to the same household, and this occurred more often than expected based on chance only, suggesting either clonal transmission of ESBL-E between humans and pets within households, or exposure to the same source.

## Acknowledgements

We would like to thank all participants for their contribution in submitting samples and filling in the questionnaires. We would also like to thank Linda van der Graaf-van Bloois for her technical assistance in the WGS analysis. In addition, we thank L. J. L. Muller, J. P. M. Vlooswijk, G. M. A. Riemens-van Zetten, M. R. C. Rogers, R. Zuidema and L.W. Pisa for technical assistance and/or help with logistics.

## Funding

This work was supported by the Dutch public private partnership 1Health4Food (1H4F) and by the Dutch Ministry of Health, Welfare, and Sport. ESBL Attribution (ESBLAT) consortium project number TKI AF-12067.



**Figure 3.** Flow chart of the ESBL status of dogs at baseline and after 1 and 6 months. pos, positive; neg, negative.

## Transparency declarations

None to declare.

## Supplementary data

Tables S1 and S2 and Figures S1 and S2 are available as [Supplementary data](#) at JAC Online.

## References

- 1 Blaak H, de Kruijff P, Hamidjaja R *et al*. Prevalence and characteristics of ESBL-producing *E. coli* in Dutch recreational waters influenced by wastewater treatment plants. *Vet Microbiol* 2014; **171**: 448–59.
- 2 Overdeest I, Willemsen I, Rijnsburger M *et al*. Extended-spectrum  $\beta$ -lactamase genes of *Escherichia coli* in chicken meat and humans, the Netherlands. *Emerg Infect Dis* 2011; **17**: 1216–22.

- 3 Dohmen W, Bonten MJM, Bos MEH *et al*. Carriage of extended-spectrum  $\beta$ -lactamases in pig farmers is associated with occurrence in pigs. *Clin Microbiol Infect* 2015; **21**: 917–23.

- 4 Reuland EA, Naiemi N, Kaiser AM *et al*. Prevalence and risk factors for carriage of ESBL-producing Enterobacteriaceae in Amsterdam. *J Antimicrob Chemother* 2016; **71**: 1076–82.

- 5 Platteel TN, Hall MAL, Stuart JWC *et al*. Predicting carriage with extended-spectrum  $\beta$ -lactamase-producing bacteria at hospital admission: a cross-sectional study. *Clin Microbiol Infect* 2015; **21**: 141–6.

- 6 Pomba C, Rantala M, Greko C *et al*. Public health risk of antimicrobial resistance transfer from companion animals. *J Antimicrob Chemother* 2017; **72**: 957–68.

- 7 Poirel L, Nordmann P, Ducroz S *et al*. Extended-spectrum  $\beta$ -lactamase CTX-M-15-producing *Klebsiella pneumoniae* of sequence type ST274 in companion animals. *Antimicrob Agents Chemother* 2013; **57**: 2372–5.

- 8 Dierikx CM, van Duijkeren E, Schoormans AH *et al*. Occurrence and characteristics of extended-spectrum- $\beta$ -lactamase- and AmpC-producing clinical isolates derived from companion animals and horses. *J Antimicrob Chemother* 2012; **67**: 1368–74.



- 9 HAS Hogeschool and Utrecht University Faculty of Veterinary Medicine. Feiten & Cijfers Gezelschapsdierensector 2015. 2015. <https://www.rijksoverheid.nl/documenten/rapporten/2015/11/03/feiten-cijfers-gezelschapsdieren-sector-2015>.
- 10 Hordijk J, Schoormans A, Kwakernaak M et al. High prevalence of fecal carriage of extended spectrum  $\beta$ -lactamase/AmpC-producing Enterobacteriaceae in cats and dogs. *Front Microbiol* 2013; **4**: 242.
- 11 Meyer E, Gastmeier P, Kola A et al. Pet animals and foreign travel are risk factors for colonisation with extended-spectrum  $\beta$ -lactamase-producing *Escherichia coli*. *Infection* 2012; **40**: 685–7.
- 12 Ljungquist O, Ljungquist D, Myrenäs M et al. Evidence of household transfer of ESBL-/pAmpC-producing Enterobacteriaceae between humans and dogs—a pilot study. *Infect Ecol Epidemiol* 2016; **6**: 31514.
- 13 Baede VO, Wagenaar JA, Broens EM et al. Longitudinal study of extended-spectrum- $\beta$ -lactamase- and AmpC-producing Enterobacteriaceae in household dogs. *Antimicrob Agents Chemother* 2015; **59**: 3117–24.
- 14 van den Bunt G, van Pelt W, Hidalgo L et al. Prevalence, risk factors and genetic characterisation of extended-spectrum  $\beta$ -lactamase and carbapenemase-producing Enterobacteriaceae (ESBL-E and CPE): a community-based cross-sectional study, the Netherlands, 2014 to 2016. *Euro Surveill* 2019; **24**: pii=1800594.
- 15 Voets GM, Platteel TN, Fluit AC et al. Population distribution of  $\beta$ -lactamase conferring resistance to third-generation cephalosporins in human clinical Enterobacteriaceae in the Netherlands. *PLoS One* 2012; **7**: e52102.
- 16 Treangen TJ, Ondov BD, Koren S et al. The harvest suite for rapid core-genome alignment and visualization of thousands of intraspecific microbial genomes. *Genome Biol* 2014; **15**: 524.
- 17 Croucher NJ, Page AJ, Connor TR et al. Rapid phylogenetic analysis of large samples of recombinant bacterial whole genome sequences using Gubbins. *Nucleic Acids Res* 2015; **43**: e15.
- 18 Zankari E, Hasman H, Cosentino S et al. Identification of acquired antimicrobial resistance genes. *J Antimicrob Chemother* 2012; **67**: 2640–4.
- 19 Carattoli A, Zankari E, García-Fernández A et al. *In silico* detection and typing of plasmids using PlasmidFinder and plasmid multilocus sequence typing. *Antimicrob Agents Chemother* 2014; **58**: 3895–903.
- 20 Larsen MV, Cosentino S, Rasmussen S et al. Multilocus sequence typing of total-genome-sequenced bacteria. *J Clin Microbiol* 2012; **50**: 1355–61.
- 21 Breiman L. Random forests. *Mach Learn* 2001; **45**: 5–32.
- 22 Steyerberg E. *Clinical Prediction Model: A Practical Approach to Development, Validation, and Updating*. Springer, 2009.
- 23 Benjamini Y, Hochberg Y. Controlling the false discovery rate: a practical and powerful approach to multiple testing. *J R Stat Soc* 1995; **57**: 289–300.
- 24 Rockhill B, Newman B, Weinberg C. Use and misuse of population attributable fractions. *Am J Public Health* 1998; **88**: 15–9.
- 25 van Buuren S, Groothuis-Oudshoorn K. mice: multivariate imputation by chained equations in R. *J Stat Softw* 2011; **45**: 1–67.
- 26 Liakopoulos A, van den Bunt G, Geurts Y et al. High prevalence of intra-familial co-colonization by extended-spectrum cephalosporin resistant Enterobacteriaceae in preschool children and their parents in Dutch households. *Front Microbiol* 2018; **9**: 293.
- 27 Wedley AL, Dawson S, Maddox TW et al. Carriage of antimicrobial resistant *Escherichia coli* in dogs: prevalence, associated risk factors and molecular characteristics. *Vet Microbiol* 2017; **199**: 23–30.
- 28 Schmidt VM, Pinchbeck GL, Nuttall T et al. Antimicrobial resistance risk factors and characterisation of faecal *E. coli* isolated from healthy Labrador retrievers in the United Kingdom. *Prev Vet Med* 2015; **119**: 31–40.
- 29 Baede VO, Broens EM, Spaninks MP et al. Raw pet food as a risk factor for shedding of extended-spectrum  $\beta$ -lactamase-producing Enterobacteriaceae in household cats. *PLoS One* 2017; **12**: e0187239.
- 30 Dorado-García A, Smid JH, van Pelt W et al. Molecular relatedness of ESBL/AmpC-producing *Escherichia coli* from humans, animals, food and the environment: a pooled analysis. *J Antimicrob Chemother* 2018; **73**: 339–47.
- 31 Leverstein-van Hall MA, Dierikx CM, Cohen Stuart J et al. Dutch patients, retail chicken meat and poultry share the same ESBL genes, plasmids and strains. *Clin Microbiol Infect* 2011; **17**: 873–80.
- 32 Cohen Stuart J, van den Munckhof T, Voets G et al. Comparison of ESBL contamination in organic and conventional retail chicken meat. *Int J Food Microbiol* 2012; **154**: 212–4.
- 33 Leite-Martins LR, Mahú MIM, Costa AL et al. Prevalence of antimicrobial resistance in enteric *Escherichia coli* from domestic pets and assessment of associated risk markers using a generalized linear mixed model. *Prev Vet Med* 2014; **117**: 28–39.
- 34 Carvalho AC, Barbosa AV, Arais LR et al. Resistance patterns, ESBL genes, and genetic relatedness of *Escherichia coli* from dogs and owners. *Braz J Microbiol* 2016; **47**: 150–8.