

# Polarity of Neuronal Membrane Traffic Requires Sorting of Kinesin Motor Cargo during Entry into Dendrites by a Microtubule-Associated Septin

Eva P. Karasmanis, Cat-Thi Phan, Dimitrios Angelis, Ilona A. Kesisova, Casper C. Hoogenraad, Richard J. McKenney, and Elias T. Spiliotis\*

\*Correspondence: [ets33@drexel.edu](mailto:ets33@drexel.edu)

<https://doi.org/10.1016/j.devcel.2018.08.004>

(Developmental Cell 46, 204–218.e1–e7; July 16, 2018)

In the originally published version of this article, the landing rate units in Figures 4A, 6A, and 7E, as well as in the Quantification and Statistical Analysis section of the STAR Methods under the “In Vitro Motor Motility” subheading, were erroneously noted as “events  $\mu\text{m}^{-1} \text{s}^{-1}$ ” rather than as “events  $\mu\text{m}^{-1} \text{min}^{-1}$ ” due to mistaken changes made at the proof stage. These errors have now been corrected in the online version of the paper. The authors regret this error and apologize for any confusion that it might have caused.



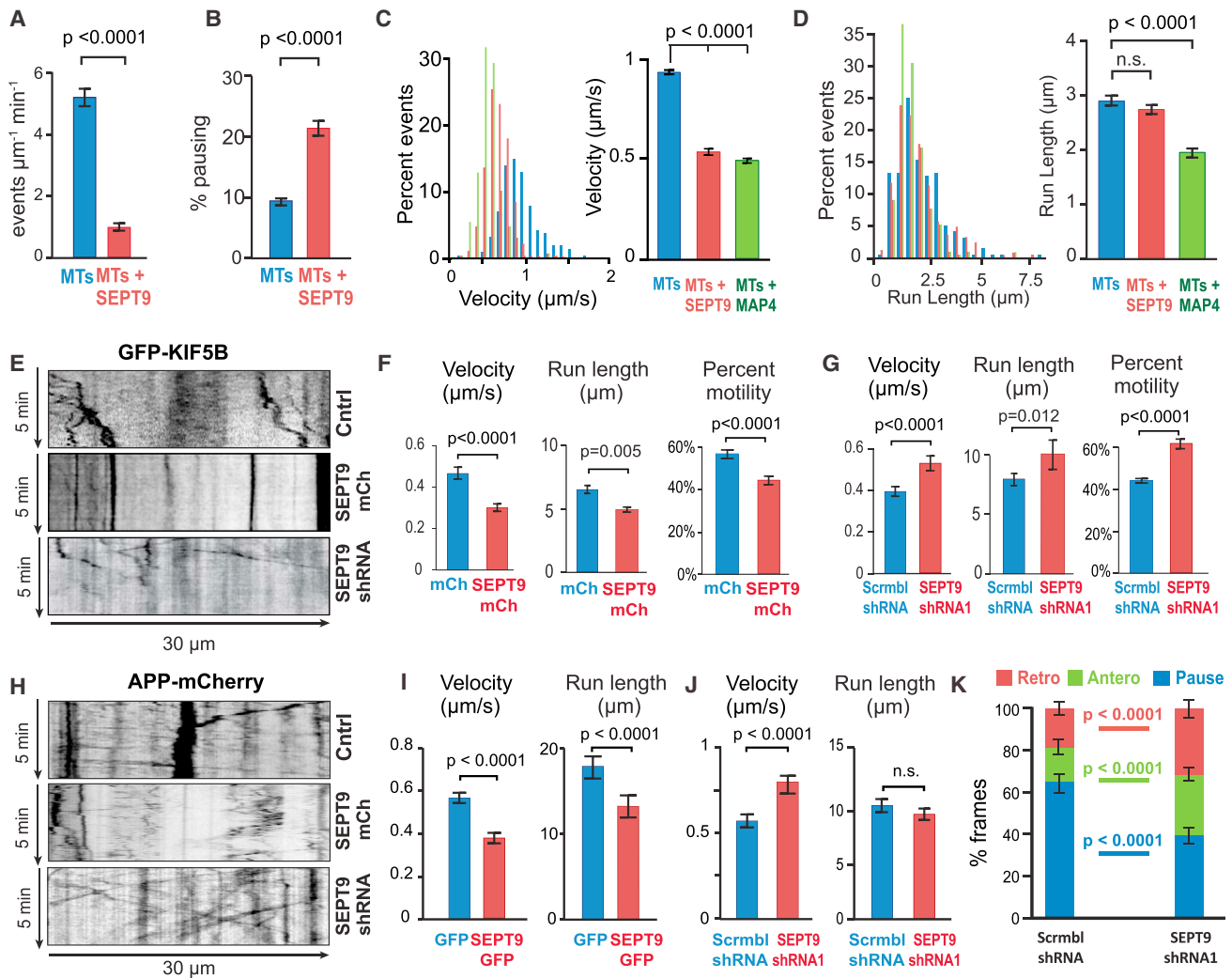


Figure 4. SEPT9 Impedes the Motility of Kinesin-1 and Its Axonal Cargo (corrected)

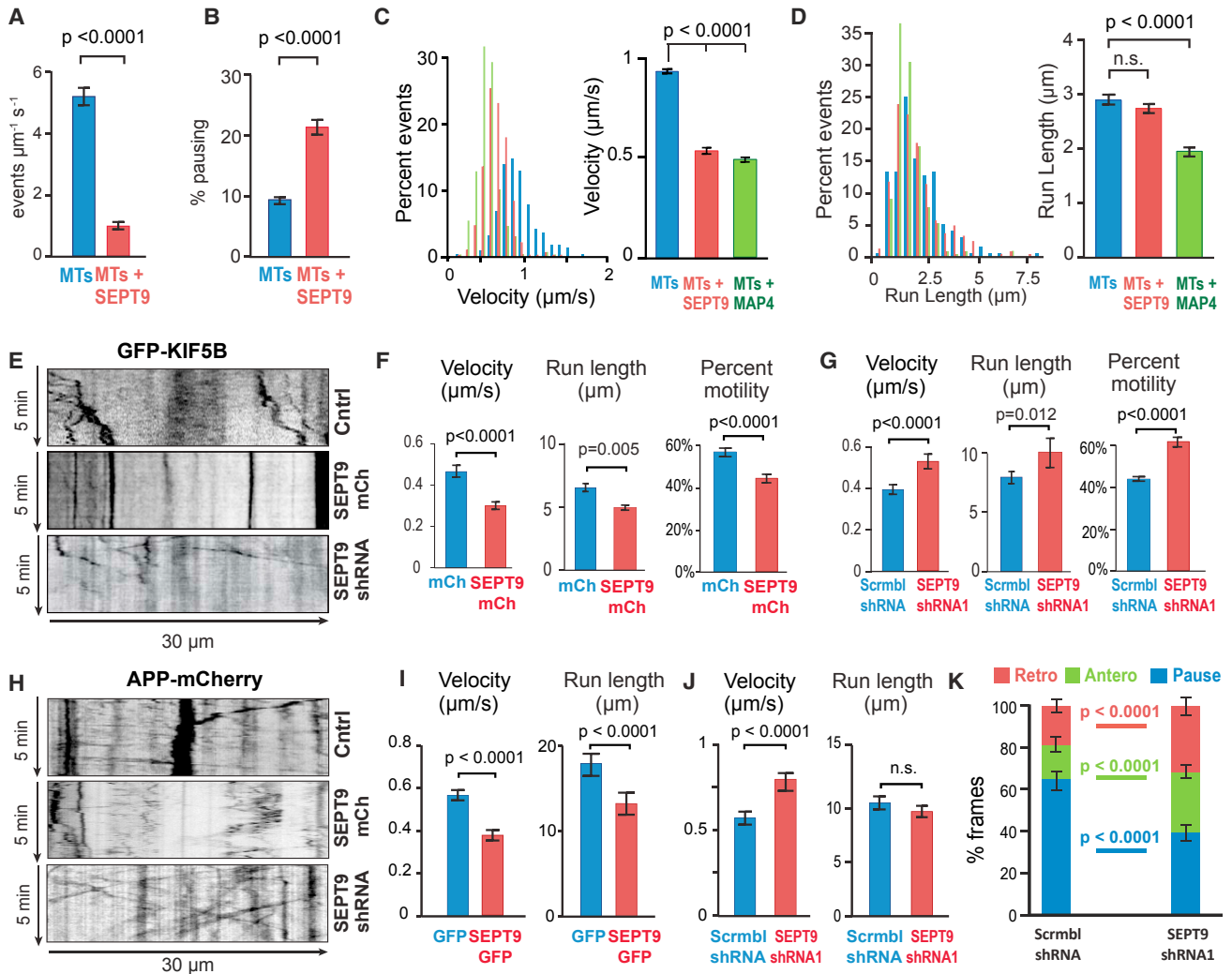


Figure 4. SEPT9 Impedes the Motility of Kinesin-1 and Its Axonal Cargo (original)

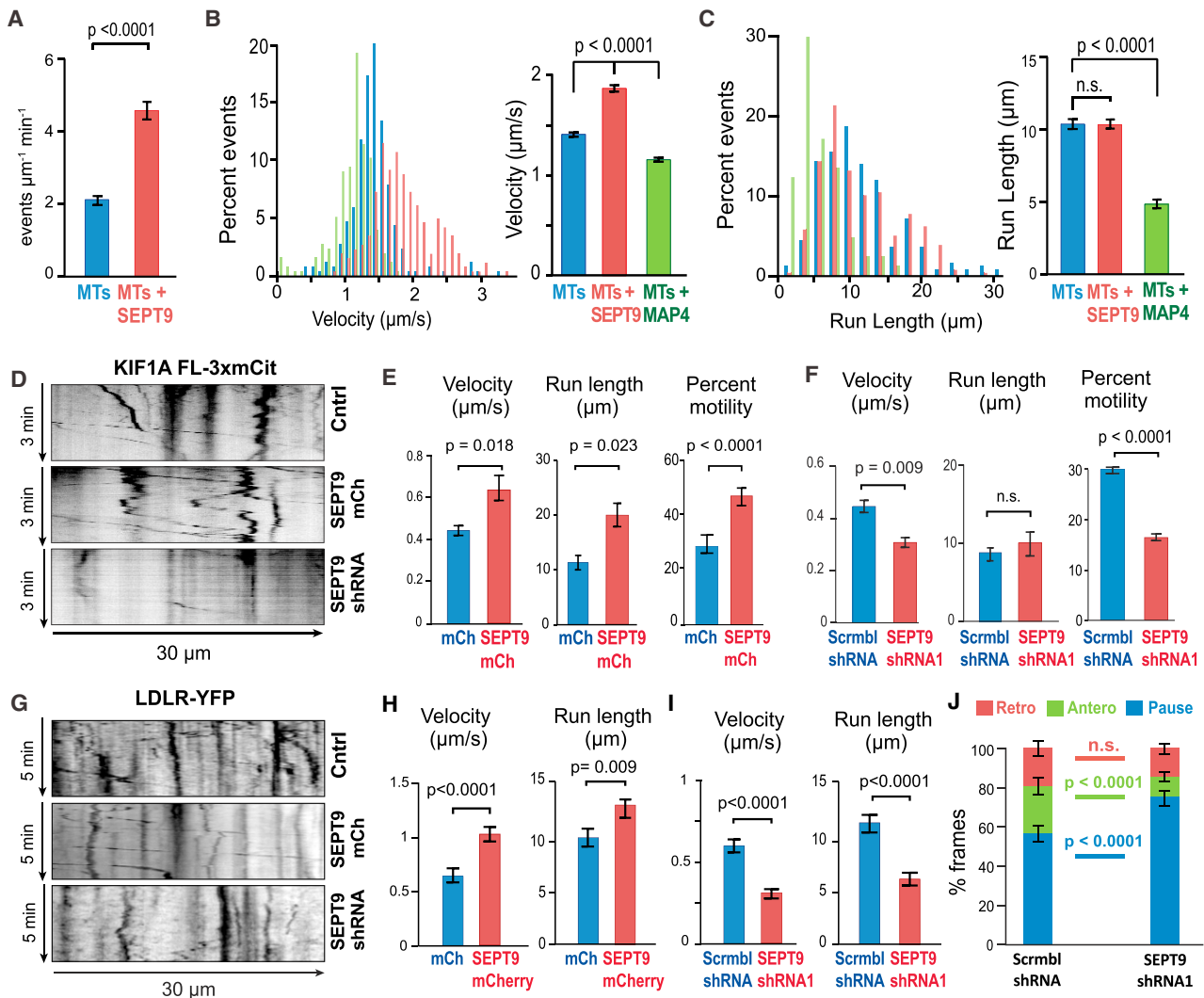


Figure 6. SEPT9 Enhances the Motility of Kinesin-3/KIF1A and LDLR Cargo (corrected)

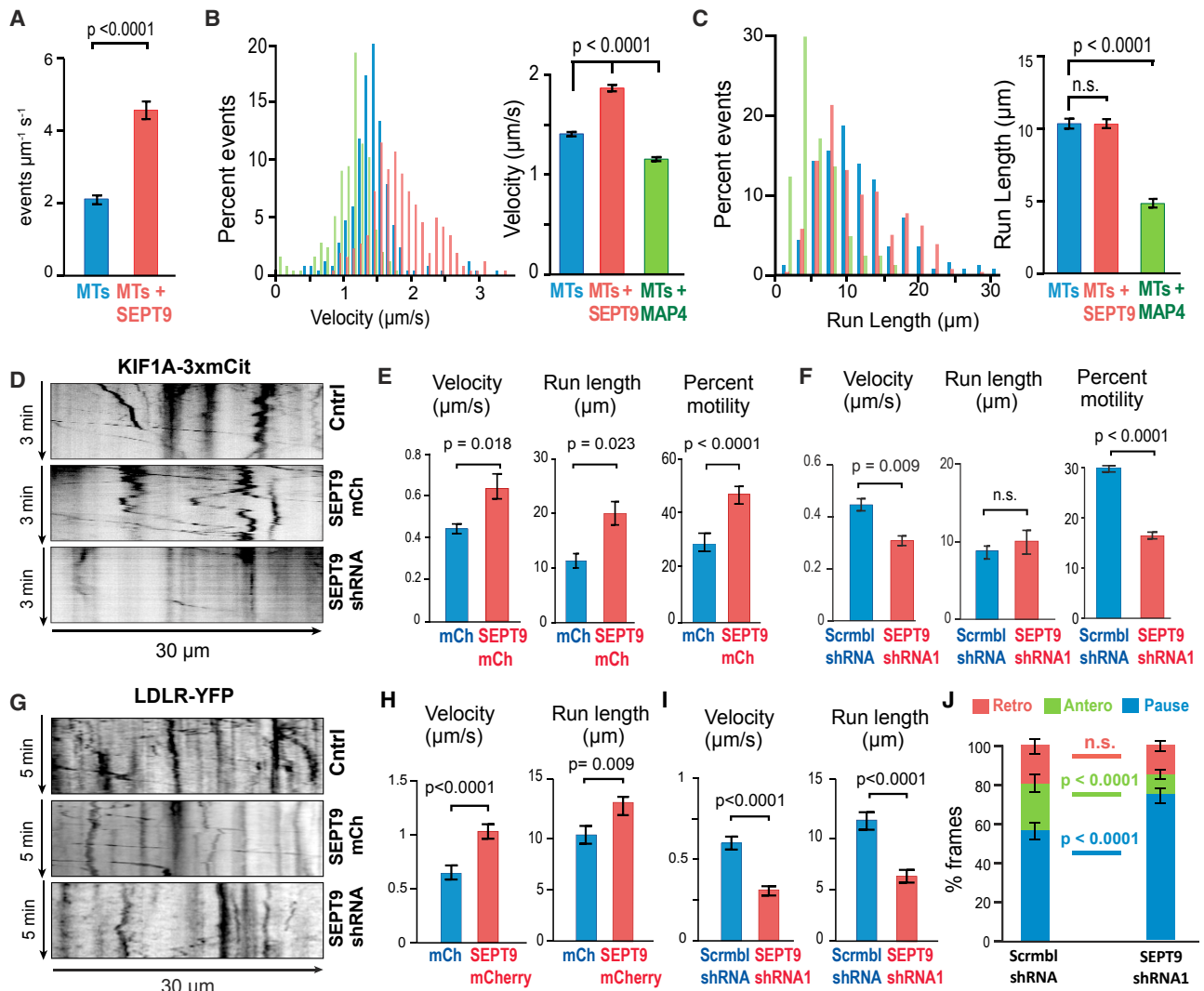


Figure 6. SEPT9 Enhances the Motility of Kinesin-3/KIF1A and LDLR Cargo (original)

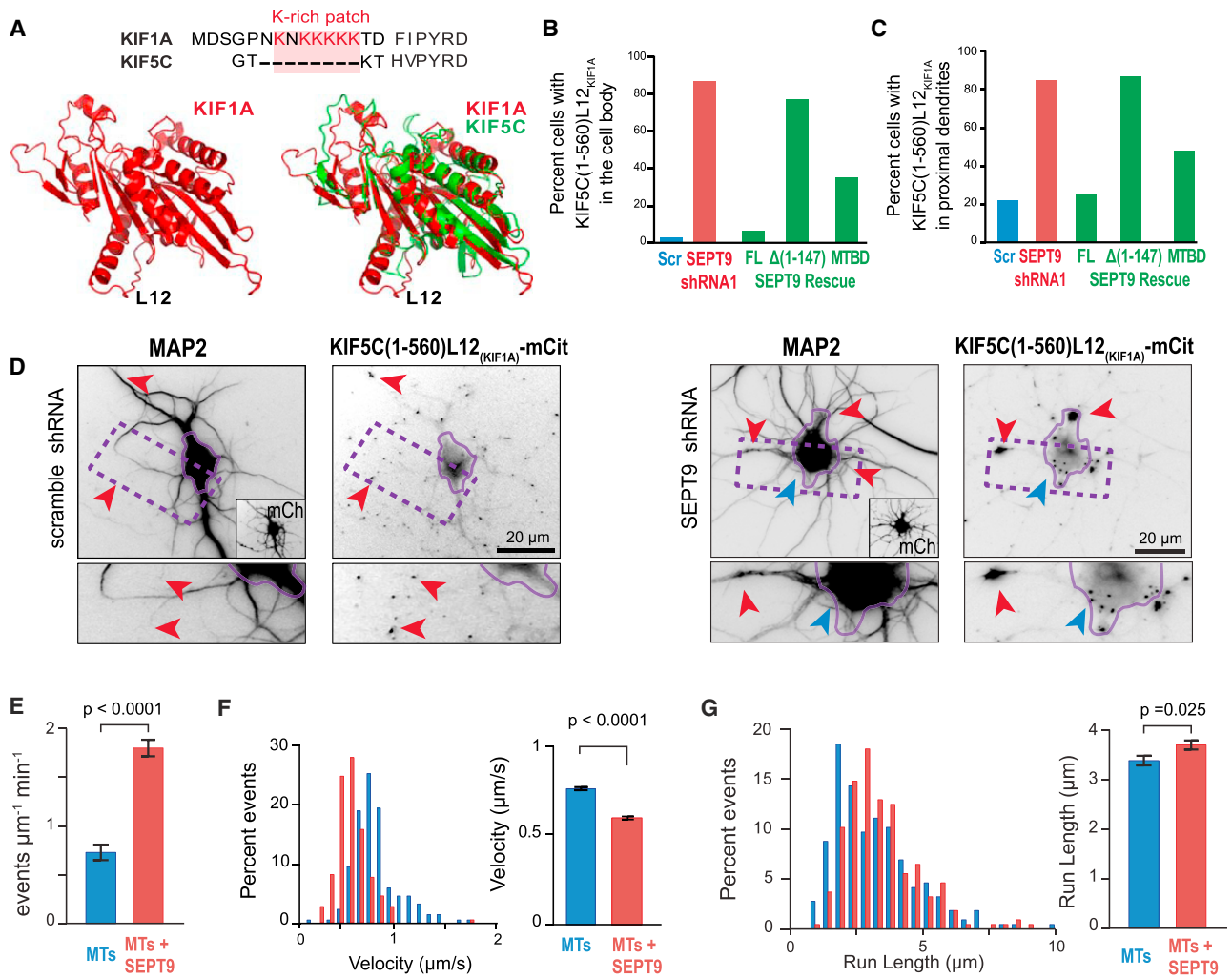


Figure 7. SEPT9 Distinguishes between the L12 Loops of Kinesin-1/KIF5 and Kinesin-3/KIF1A (corrected)

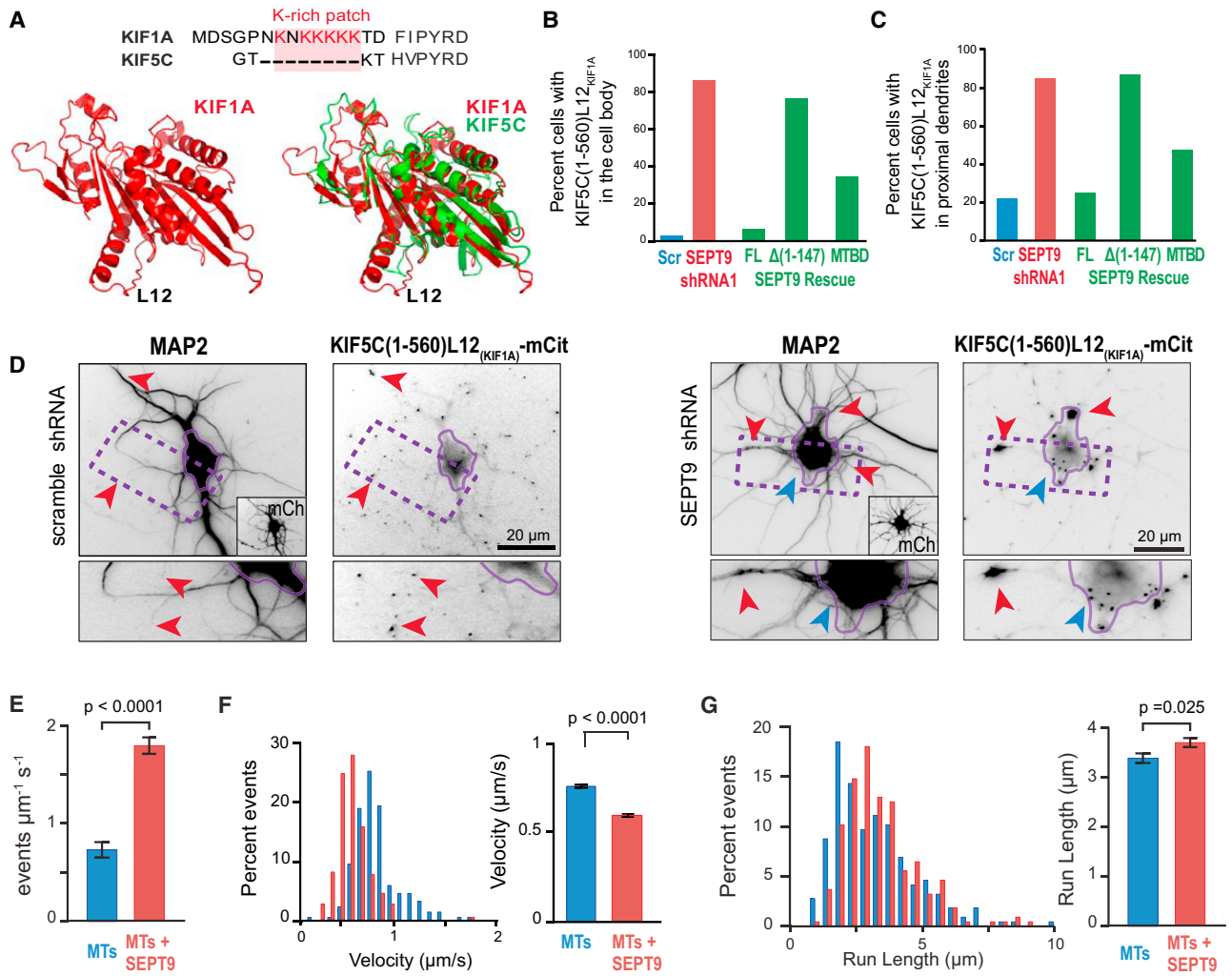


Figure 7. SEPT9 Distinguishes between the L12 Loops of Kinesin-1/KIF5 and Kinesin-3/KIF1A (original)