



On the importance of the albedo parameterization for the mass balance of the Greenland ice sheet in EC-Earth

Michiel M. Helsen¹, Roderik S. W. van de Wal¹, Thomas J. Reerink¹, Richard Bintanja², Marianne S. Madsen³, Shuting Yang³, Qiang Li⁴, and Qiong Zhang⁴

¹Institute for Marine and Atmospheric Research Utrecht, Utrecht University, Utrecht, the Netherlands

²Royal Netherlands Meteorological Institute, De Bilt, the Netherlands

³Danish Meteorological Institute, Copenhagen, Denmark

⁴Bolin Centre for Climate Research, Department of Physical Geography, Stockholm University, Stockholm, Sweden

Correspondence to: Michiel M. Helsen (m.m.helsen@uu.nl)

Received: 7 December 2016 – Discussion started: 22 December 2016

Revised: 6 July 2017 – Accepted: 10 July 2017 – Published: 23 August 2017

Abstract. The albedo of the surface of ice sheets changes as a function of time due to the effects of deposition of new snow, ageing of dry snow, bare ice exposure, melting and run-off. Currently, the calculation of the albedo of ice sheets is highly parameterized within the earth system model EC-Earth by taking a constant value for areas with thick perennial snow cover. This is an important reason why the surface mass balance (SMB) of the Greenland ice sheet (GrIS) is poorly resolved in the model. The purpose of this study is to improve the SMB forcing of the GrIS by evaluating different parameter settings within a snow albedo scheme. By allowing ice-sheet albedo to vary as a function of wet and dry conditions, the spatial distribution of albedo and melt rate improves. Nevertheless, the spatial distribution of SMB in EC-Earth is not significantly improved. As a reason for this, we identify omissions in the current snow albedo scheme, such as separate treatment of snow and ice and the effect of refreezing. The resulting SMB is downscaled from the lower-resolution global climate model topography to the higher-resolution ice-sheet topography of the GrIS, such that the influence of these different SMB climatologies on the long-term evolution of the GrIS is tested by ice-sheet model simulations. From these ice-sheet simulations we conclude that an albedo scheme with a short response time of decaying albedo during wet conditions performs best with respect to long-term simulated ice-sheet volume. This results in an optimized albedo parameterization that can be used in future EC-Earth simulations with an interactive ice-sheet component.

1 Introduction

Ice mass loss from the Greenland ice sheet (GrIS) is currently an important and accelerating contributor to sea level rise (Shepherd et al., 2012; Vaughan et al., 2013; Velicogna et al., 2014; Kjeldsen et al., 2015). Ice-sheet models are used in order to understand ice-sheet evolution and to generate projections for the future. The outcome of ice-sheet model (ISM) simulations of the GrIS is strongly constrained by the surface mass balance (SMB) forcing, i.e. the net result of mass gain at the surface of the ice sheet by snowfall and rain, redistribution of snow through wind action, and mass loss by sublimation and meltwater run-off. One can use different sources to obtain a SMB forcing for ISM simulations, ranging from observations, regional climate model (RCM) output and global climate model (GCM) output. This choice is usually determined by the nature of the ISM simulation: future projections rely on climate model output, from which observations of snow accumulation can be used for present-day analysis.

For centennial-scale present-day and near-future ice-sheet simulations, high-resolution SMB products from RCMs such as the MAR model (Fettweis et al., 2013) or RACMO2 (Van Angelen et al., 2014) are widely used to drive GrIS model simulations (e.g. Lea et al., 2014; Colgan et al., 2015). Climate models that include a multilayer snow model are increasingly able to simulate relevant processes such as snow densification, percolation and refreezing, which improve the physics of the simulated near-surface climate and firn processes. Moreover, high-resolution regional climate

modelling is generally regarded as superior to observation-based SMB products due to the better spatial coverage of the models, which offer more details than interpolating inhomogeneous available observations.

However, the performance of RCMs is to a large extent determined by the quality of the forcing at the lateral boundaries and the sea surface. For the present-day configuration this is not a problem due to the existence of good-quality global reanalysis data (e.g. Uppala et al., 2005; Dee et al., 2011). Nevertheless, this is not possible for palaeo-studies nor for future projections; hence RCMs then have to rely on changing lateral boundary conditions from simulations of GCMs (e.g. Hostetler et al., 2000; Van de Berg et al., 2011; Maris et al., 2014). Consequently, a more direct approach for those cases would be to calculate the SMB directly within the GCM. However, this requires a high-resolution GCM or alternatively downscaling techniques. In addition, millennial-scale (and longer) ice-sheet simulations lead to significant changes in ice-sheet surface elevation and extent. To account for feedbacks from the growth or decay of ice sheets on the climate system itself, an interactive ISM component needs to be included in a GCM.

Different GCMs with interactive ISM components exist, all with their own downscaling solutions to retrieve a meaningful SMB forcing over ice sheets. Lipscomb et al. (2013) compute SMB by solving the surface energy balance in combination with a multilayer snow model. Moreover, to overcome differences in resolution between the Community Earth System Model (CESM) and the ISM grid, they apply the multilayer snow model in 10 elevation classes for each grid cell within the land surface model. For each elevation class, prognostic calculations of albedo, melt, refreezing and run-off are carried out, driven by downscaled turbulent fluxes (using Monin–Obukhov similarity theory), atmospheric surface temperature (using a globally uniform lapse rate of 6 K km^{-1}) and specific humidity (assuming constant relative humidity), from the mean grid cell elevation to the elevation of each class. Incoming radiative fluxes and precipitation are not downscaled. A more simplified approach is the use of a positive degree day (PDD) model to estimate surface melt from near-surface temperatures, which is estimated using a lapse rate. This method is applied by e.g. Ziemen et al. (2014) to force the Parallel Ice Sheet Model (PISM) with the ECHAM5 GCM. A review of the status and challenges related to earth system models with interactive ice sheets is given in Vizcaíno (2014).

SMB calculations using an energy balance approach strongly rely on the parameterization of albedo. Since snow albedo is high, only a small portion of incoming solar radiation is absorbed by the snow, implying a strong sensitivity of SMB to the albedo values. Local melting leads to rapid snow metamorphism and a related drop of the albedo (e.g. Lefebre et al., 2003), increasing absorbed solar radiation, and thereby providing more energy that can contribute to melting of the snow. As such, even a small perturbation of the albedo can

amplify changes in the radiation budget of the snowpack. In the absence of a snow layer, the albedo of bare ice is much lower and depends on the impurity content (Greuell and Genthon, 2004; Bøggild et al., 2010; Wientjes and Oerlemans, 2010; Wientjes et al., 2011). The albedo of dry snow decreases more slowly as a function of changes in snow grain size and shape, but is also influenced by impurity content, solar zenith angle and cloudiness (Warren, 1982; Greuell and Genthon, 2004; Gardner and Sharp, 2010). As a consequence albedo schemes need to be treated carefully. Each climate model has its own albedo parameterization, ranging from the most simple solution of a prescribed constant albedo over ice sheets (e.g. HadGEM2, ECHAM5; Martin et al., 2011; Ziemen et al., 2014), through snow albedo as a diagnostic variable depending on the time after snow deposition (e.g. CNRM, Douville et al., 1995; Voldoire et al., 2013), to albedo as a prognostic variable based on radiative transfer computations, effective snow grain size, solar zenith angle and the presence of carbon or dust (e.g. CESM, Lipscomb et al., 2013).

To better understand changes in the mass of the ice sheet and in its interaction with the climate system for palaeo-studies, present-day simulations and future climate projections, we aim to include an ISM component in the earth system model EC-Earth (Hazeleger et al., 2010). As a step in this direction, the quality of the SMB forcing from EC-Earth over the GrIS should be improved. In this study, we investigate how the snow albedo parameterization over ice sheets influences the modelled SMB estimates. The original albedo parameterization in EC-Earth is adjusted to accommodate a more realistic seasonal evolution of the albedo, which leads to a more realistic calculation of snow melt and hence also the SMB. The SMB over GrIS resulting from simulations using various parameters in the albedo parameterization scheme are compared and evaluated using the SMB climatology estimated with the high-resolution RCM RACMO2. Subsequently, we compare the downscaled SMB on the higher-resolution ice-sheet topography, using spatial relations between SMB and surface elevation (SMB gradients method, Helsen et al., 2012). As a final step, we carry out ISM simulations to simulate the steady-state size of the GrIS as a function of the different SMB climatologies. In this way, we use the albedo parameterization as a calibration tool, such that we determine the optimal combination of parameters in the albedo parameterization, which results in a SMB forcing which in turn leads to a steady-state GrIS simulation close to the present-day size. Our experiments also identify which modifications are necessary for further improvements of the ice-sheet mass balance within GCMs. Such improvements regarding the description of ice sheets in GCMs is vital for a better understanding of changes in ice sheets in the past, present and future.

2 Albedo parameterization

Ice-sheet SMB is the net result of accumulation of snow, ice mass loss by sublimation, surface melt and subsequent run-off. The amount of melt is a function of the surface energy balance (SEB) components, which vary widely in space and time over the ice sheet. An important source of melt energy is delivered by shortwave radiation, but due to the high albedo of snow most of the incoming shortwave radiation is reflected back into space. Therefore, the snow albedo evolution exerts a strong control on the ice-sheet SEB, and thus on the SMB.

In cold, dry conditions, snow albedo over ice sheets remains relatively high (Loth et al., 1993), although with time snow grains grow, which effectively reduces the albedo (Warren, 1982; Gardner and Sharp, 2010). However, this process is generally slow at low temperatures. Observed broadband albedo values in the accumulation area of the GrIS are in the range 0.75–0.83 (Alexander et al., 2014). The presence of liquid water has a darkening effect on snow: water in snow strongly accelerates grain growth and fills in voids between the snow grains. Both of these effects increase the effective grain size, thus rapidly decreasing the broadband albedo of wet snow (e.g. Gardner and Sharp, 2010). Liquid water ponding on the glacier surface, removal of the firn layer and subsequent melting of the bare ice are associated with broadband albedo values of ~ 0.5 (Van de Wal and Oerlemans, 1994; Van de Wal et al., 2005; Van den Broeke et al., 2008; van den Broeke et al., 2011; Alexander et al., 2014). The accumulation of impurities, microorganisms, dust or debris on the glacier surface can further decrease albedo to values < 0.3 (Greuell and Genthon, 2004; Bøggild et al., 2010; Wientjes and Oerlemans, 2010; Wientjes et al., 2011). To minimize the bias introduced by uncertainty in the albedo, it can be a solution to use observed albedo (e.g. MODIS, Box et al., 2017), but this is only a solution for experiments describing the recent observational period, and not possible for palaeo and future simulations.

2.1 Albedo in EC-Earth standard set-up

EC-Earth (version 2.3) participated in CMIP5 (Taylor et al., 2012). The model was evaluated against observations, reanalysis data and other coupled atmosphere–ocean–sea ice models, and its performance was good in terms of the mean state, spatial patterns, seasonal cycle and variability of present-day climate (Hazeleger et al., 2010, 2012). We use the updated EC-Earth version 3.1, i.e. ECMWF’s Integrated Forecasting System (IFS) on a spectral resolution truncated at wave number 255 (T255), with 91 vertical atmospheric levels. Snow albedo (α_{sn}) is calculated in EC-Earth as part of the Hydrology Tiled ECMWF Scheme of Surface Exchanges over Land (HTESSEL; Viterbo and Beljaars, 1995) and it includes an explicit snow scheme, which consists of one layer of snow, with a time-evolving density (Dutra et al., 2010). Heat fluxes are calculated through the snow layer, and snow liquid water

capacity is approximated as a function of density and snow mass. Albedo varies as a function of time, linearly decreasing for dry snow and exponentially decreasing for melting conditions. When the flux of fresh snow exceeds a certain threshold, α_{sn} is reset to its maximum value ($\alpha_{\text{max}} = 0.85$). However, α_{sn} is assigned a fixed value ($\alpha_{\text{per}} = 0.80$) for areas where the snow layer has reached the maximum value of 10 m. These are typical conditions that prevail over ice sheets, and as such snow albedo is in effect constant over Greenland in the standard set-up of EC-Earth:

$$\alpha_{\text{sn}} = 0.80. \quad (1)$$

A continuous growth of the snow layer due to a positive SMB over perennial snow covered areas is not desirable in climate models, because it violates water conservation. Therefore, the snow layer thickness is set to a maximum (10 m w.e.) in EC-Earth. When snowfall occurs on top of a snow layer with maximum thickness, the excess snow is returned to the hydrological cycle as run-off, i.e. by adding it to the meltwater flux. This aspect of the treatment of ice sheets has been left unchanged, but to enable a time-varying snow albedo, the snow model has been adjusted as described below. The melting of snow is based on the surface energy balance and only occurs when the energy flux to the surface is positive.

2.2 Adjustments for ice sheets

Efforts have been undertaken by groups in Stockholm (Bolin Center), Copenhagen (DMI) and Utrecht (IMAU-KNMI) to include an interactive ice-sheet component within EC-Earth (Svendsen et al., 2015). As part of this effort, a new surface-type ice sheet is introduced to the land surface module HTESSEL of the IFS atmosphere model within EC-Earth. GrIS areal extent from Howat et al. (2014) is mapped to the T255 resolution using the mapping method OBLIMAP (Reerink et al., 2010, 2016) and is read by EC-Earth in the initialization phase. All runs described in this study use the same GrIS domain.

Snow albedo can be prescribed differently for this ice-sheet surface type. However, the land surface model does not distinguish between snow or ice, nor is snow grain size simulated. Therefore, the basis of the snow scheme applied over ice sheets is still from the original scheme for seasonal snow by Dutra et al. (2010), but each of the groups mentioned above has made different choices for the parameter settings. Here, these different choices for snow albedo are briefly described.

Instead of using a constant value of $\alpha_{\text{sn}} = 0.80$, a time-evolving scheme is adopted, using different minimum and maximum values. When fresh snow accumulates the snow albedo is reset to a maximum value (α_{max}). This is done similarly by all groups:

$$\alpha_{\text{sn}}^{t+1} = \alpha_{\text{sn}}^t + \min\left(1, \frac{F \Delta t}{10}\right) (\alpha_{\text{max}} - \alpha_{\text{sn}}^t). \quad (2)$$

Table 1. Albedo scheme parameter values.

Parameter	Sto	Cph	Utr-5	Utr-6	Utr-7	Utr-8	Utr-9
α_{\min}	0.60	0.60	0.50	0.50	0.50	0.50	0.45
α_{refr}	–	0.65	0.60	0.60	0.60	0.60	0.60
α_{firm}	–	0.75	0.75	0.75	0.75	0.75	0.75
α_{\max}	0.80	0.85	0.80	0.85	0.85	0.85	0.80
τ_{melt}	4 days	0 days	4 days	4 days	2 days	1 day	0 days
τ_{firm}	–	30 days	30 days	30 days	30 days	30 days	30 days

Δt represents the time step in the model (in hours). When the snowfall rate (F) exceeds $10 \text{ kg m}^{-2} \text{ h}^{-1}$, snow albedo is fixed at α_{\max} . A continuous reset for small amounts of snowfall is implemented to reduce the importance of small amounts of snowfall on albedo. However, α_{\max} depends on the scheme which is used (Table 1).

When the snow layer is not refreshed by new snowfall, albedo can decrease with time. A distinction is made between the slow effect of ageing of dry snow (slow decay of albedo) and the faster effect of wet, melting snow. So-called “wet” conditions are recognized when either liquid water is present (due to melting or rainfall) or when snow temperature is within 2K of the melting point.

For dry conditions, a slow exponential decay is applied toward a minimum firm albedo value ($\alpha_{\text{firm}} = 0.75$), parameterizing the effect of grain growth on snow albedo:

$$\alpha_{\text{sn}}^{t+1} = (\alpha_{\text{sn}}^t - \alpha_{\text{firm}}) e^{-\frac{\Delta t}{\tau_{\text{firm}}}} + \alpha_{\text{firm}}. \quad (3)$$

We use an e -folding timescale τ_{firm} of 30 days. Parameterizing the effect of dry metamorphism of snow by applying an exponential function has also been done, for example by Bougamont et al. (2005), who also used $\tau_{\text{firm}} = 30$ days.

For wet conditions, a faster exponential decay of albedo can be prescribed towards a minimum value (α_{\min}), with an e -folding timescale (τ_{melt}):

$$\alpha_{\text{sn}}^{t+1} = (\alpha_{\text{sn}}^t - \alpha_{\min}) e^{-\frac{\Delta t}{\tau_{\text{melt}}}} + \alpha_{\min}. \quad (4)$$

Note that we do not make an explicit distinction between the albedo of snow and ice. When all snow is melted on a grid point within the ice-sheet mask, we use a constant minimum albedo (α_{\min}). The parameter values as used by different groups are summarized in Table 1.

2.2.1 Albedo scheme Stockholm (Sto)

In the “Sto” albedo scheme, fresh snowfall is given the value $\alpha_{\max} = 0.80$. The effect of ageing of dry snow on the albedo is neglected; hence no decrease of α_{sn} is applied for dry conditions. Instead of applying Eq. (3), α_{sn} is kept constant during dry conditions:

$$\alpha_{\text{sn}}^{t+1} = \alpha_{\text{sn}}^t. \quad (5)$$

For wet conditions, the Sto albedo scheme uses the exponential decay (Eq. 4) with an e -folding timescale (τ_{melt}) of 4 days (Table 1). This timescale is similar to the original snow albedo scheme for seasonal snow by Douville et al. (1995) and Dutra et al. (2010).

2.2.2 Albedo scheme Copenhagen (Cph)

The albedo scheme “Cph” assigns a higher value to fresh snow compared to the Sto albedo scheme: $\alpha_{\max} = 0.85$. For dry conditions, scheme Cph applies the slow exponential decay (Eq. 3), parameterizing the effect of grain growth on snow albedo.

In contrast to the Sto scheme, the Cph scheme prescribes an instantaneous response of the albedo in wet conditions:

$$\alpha_{\text{sn}}^{t+1} = \alpha_{\min}. \quad (6)$$

The rationale behind this choice is that by infilling the voids between the snow grains, the presence of water within the snow can have an instantaneous effect by increasing the effective grain radius. However, it should be noted that this immediate effect is generally regarded as weak, and that the dominant effect of the presence of water is a strong acceleration of grain growth (Gardner and Sharp, 2010).

In case the conditions switch from wet to dry, the albedo is reset to $\alpha_{\text{refr}} = 0.65$ to account for the relatively low albedo of refrozen meltwater.

2.2.3 Albedo scheme Utrecht (Utr)

For dry conditions, the “Utr” scheme adopts the same choices as the Cph scheme (Eq. 3). A set of simulations is performed in which the value of α_{\max} is varied from 0.80 to 0.85.

For wet conditions, we test different e -folding timescales for the exponential decay (Eq. 4), varying from 0 to 4 days in order to account for the influence of rapid snow metamorphism on albedo during wet conditions. We also perform one experiment with an extremely low albedo of 0.45, which is attained instantaneously when wet conditions prevail. This value is consistent with bare ice. Next to that, we use somewhat lower minimum albedo values for melting snow and snow with refrozen meltwater (Table 1), which are more in line with observations in the ablation area of the GrIS (Van

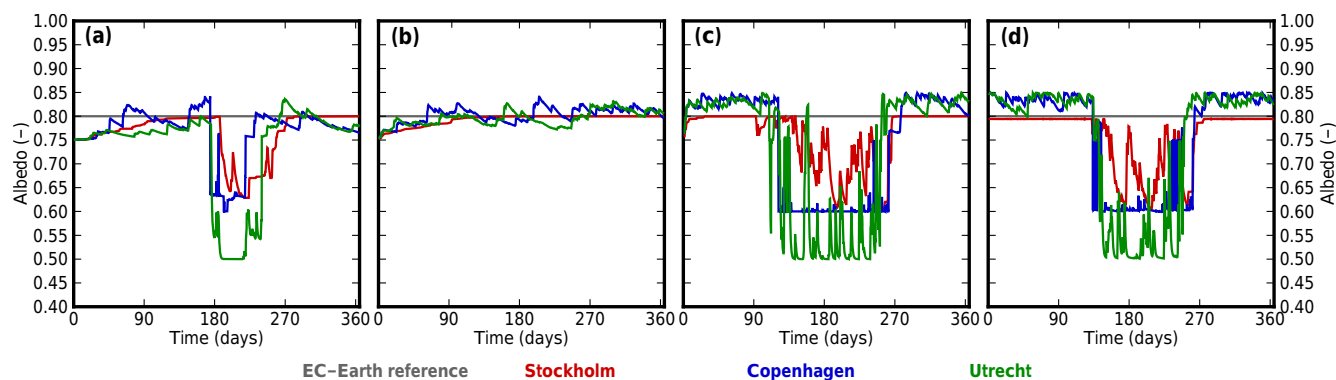


Figure 1. Evolution of albedo over 1 year at four locations over the GrIS: north-western ablation area (a), summit (b), south-western ablation area (c) and south-eastern high accumulation area (d). Locations are shown as circles in Fig. 2. Albedo schemes Sto (red), Cph (blue) and Utr-8 (green) are shown. Albedo in the standard version of EC-Earth3 is constant (grey line).

de Wal and Oerlemans, 1994; Van den Broeke et al., 2008; van den Broeke et al., 2011; Alexander et al., 2014).

2.3 Performance of albedo schemes

To test the performance of the different albedo schemes, we performed atmosphere-only runs using EC-Earth version 3.1. Simulations start on 1 January 1990, and are forced with 1990–2012 sea surface temperatures from the ERA-Interim reanalysis. Figure 1 illustrates the temporal evolution of α_{sn} in the different simulations at four locations over the GrIS: the western ablation area, the north-eastern ablation area, Summit and the south-eastern high accumulation area. Locations are shown in Fig. 2. For clarity, only the first simulated year (1990) is shown in Fig. 1, which allows identification of the influence of individual snowfall events. Hence, initial values of α_{sn} are identical for all the simulations except for the reference run, which has a constant value of $\alpha_{\text{sn}} = 0.80$ throughout the whole simulation. Note that qualitatively, a similar picture arises for other years (not shown). Since the simulated climate is freely evolving after initialization, a direct comparison with observed time series is not meaningful.

The albedo time series of the different schemes have some common aspects: albedo fluctuations are minor during the dry wintertime conditions, whereas albedo drops rapidly to lower values during the ablation season in all runs. The Sto scheme (red line) shows the fewest variations due to its characteristic of a constant albedo during cold, dry conditions.

The Cph scheme allows more variability in α_{sn} during dry conditions: the exponential decay of ageing dry snow is especially clearly visible in Fig. 1b, which is representative for the cold and dry interior. During wet conditions, α_{sn} instantly drops to α_{min} , which can be seen in Fig. 1a, a relatively dry site in north-eastern Greenland. The interplay of episodes of melt and accumulation of fresh snow introduces a large variability, which is especially apparent in Fig. 1d.

In all figures, we only show results of one of the five versions of the Utrecht scheme: Utr-8, which uses $\tau_{\text{melt}} = 1$ day.

This scheme performs best in terms of the resulting climate forcing and steady-state ISM simulations (see below). It results in more rapid and larger transitions between dry and wet conditions than the Sto and Cph schemes (Fig. 1c and d). In conditions when ablation prevails, α_{sn} is lower, since we chose lower values for α_{min} and α_{refr} , which are more in line with measured albedo over ice sheets (Van de Wal and Oerlemans, 1994; Van den Broeke et al., 2008; van den Broeke et al., 2011; Alexander et al., 2014). It should be noted that the timing of snowfall events can differ between the simulations. This is a consequence of the different albedo schemes: temperatures are slightly different and the atmospheric circulation changes.

The different albedo parameterizations give rise to subtle differences in the pattern of average albedo over Greenland, because albedo is more or less constant during winter and varies in summer depending on the melt. Results for the summer season (23-year mean JJA albedo values) are shown in Fig. 2. Observations indicate that Greenland JJA albedo should be within the range 0.75–0.85 in the accumulation area and 0.5–0.6 in the ablation area (Van de Wal and Oerlemans, 1994; Van den Broeke et al., 2008; van den Broeke et al., 2011; Alexander et al., 2014). Despite the assumption that α_{sn} does not decrease in dry conditions, the Sto albedo scheme shows lower JJA albedo in the accumulation area than the other schemes. This is caused by the lower value for α_{max} : the Sto scheme uses 0.80, whereas Cph and Utr-8 schemes use 0.85. With respect to the observed JJA albedo in the ablation area, the Sto albedo pattern (Fig. 2a) has somewhat too high albedo. The Cph scheme leads to a more pronounced difference between the accumulation area and the ablation area (Fig. 2b). The decrease of the albedo towards the ice-sheet margin can be attributed to the choice of a constant value for α_{min} for melt conditions. The Utr-8 albedo scheme leads to an even more pronounced difference between the accumulation and ablation areas (Fig. 2c), with values more in line with observed values (Van de Wal and Oer-

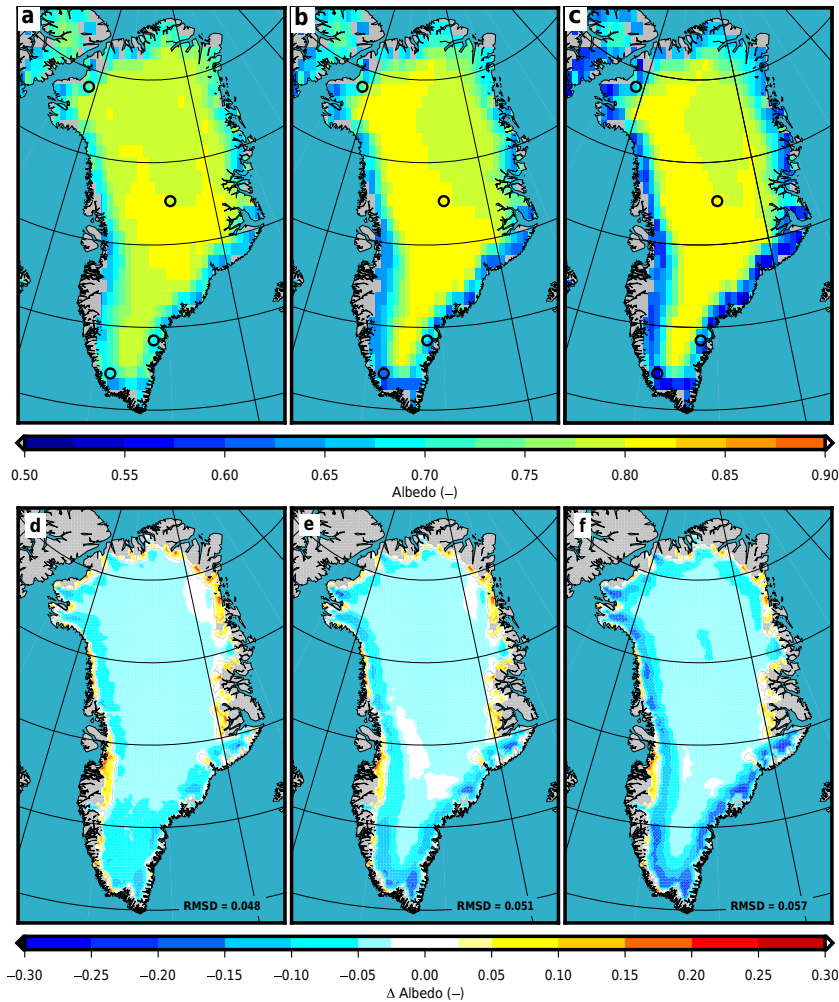


Figure 2. Average JJA albedo (1990–2012) from EC-Earth for the Sto scheme (a), Cph scheme (b) and the Utr-8 scheme (c). Difference with JJA albedo from RACMO2 (1960–1989, Van Angelen et al., 2014) is shown in (d–f). The circles indicate the locations of the four time series shown in Fig. 1. Albedo is only shown for the ice-sheet surface type; i.e. grey land area is outside the ice-sheet domain in EC-Earth.

lemans, 1994; Van den Broeke et al., 2008; van den Broeke et al., 2011; Alexander et al., 2014), mainly due to the choice of a lower value of α_{\min} compared to the other schemes. The rapid exponential decay in scheme Utr-8 ($\tau_{\text{melt}} = 1$ day) serves as a good compromise between the instantaneous effect of melt (Cph) and the delayed response of 4 days (Sto).

For a spatial comparison, we compare our simulated JJA albedo fields with albedo from the high-resolution regional atmospheric climate model RACMO2 (1960–1989) (Van Angelen et al., 2014). Forced with ERA-40 (Uppala et al., 2005) and ERA-Interim (Simmons et al., 2007) at its lateral boundaries, RACMO2 is run on an 11 km horizontal resolution, and it has 40 sigma levels in the vertical. Snow albedo in RACMO2 is based on effective snow grain size in a more sophisticated snow scheme (Kuipers Munneke et al., 2011). RACMO2 uses observed (MODIS) albedo in case the snow layer is absent, so for these regions we effectively compare with satellite-observed albedo. To facilitate a compari-

son, EC-Earth fields and RACMO2 fields are mapped onto a 20 km rectangular grid (also used for the ISM simulations, see below). The difference with JJA albedo from RACMO2 is plotted in Fig. 2d–f. This comparison reveals that the different schemes in EC-Earth slightly underestimate albedo in the upper accumulation area, but biases are small (< 0.05). The bias becomes larger in a narrow zone in the lower accumulation area, where EC-Earth JJA albedo is lower than RACMO2 albedo. This is a firm-covered area of the ice sheet, where our snow albedo scheme falls short, as it does not distinguish between snow and ice. Hence melt conditions lead to (too) fast declining albedo values, leading to slightly deteriorated RMSD values. Instead, snow albedo in RACMO2 remains higher for melt conditions in this area. However, in the lower ablation zone the bias becomes positive, and these biases are smallest for the Utr-8 scheme. This positive bias in the lower ablation zone indicates that in some locations, sum-

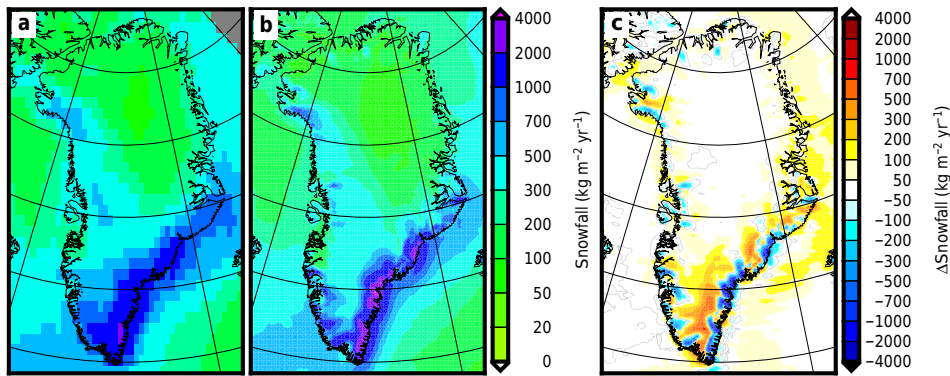


Figure 3. Average snowfall (1990–2012) from the reference run (a), from RACMO2 (Van Angelen et al., 2014) (b) and difference (EC-Earth – RACMO) (c).

meritime albedo can drop to values lower than 0.5 (minimum snow albedo used in this study).

3 Simulated surface mass balance

Differences in albedo affect the SMB through the SEB. Here, we calculate SMB using an energy balance approach. Model-simulated 6-hourly accumulated values of the net shortwave radiation (SW_{net}), longwave radiation (LW_{net}), the turbulent fluxes of sensible heat (SH) and latent heat (LH) are used to calculate the SEB over the GrIS domain:

$$\text{SEB} = SW_{\text{net}} + LW_{\text{net}} + \text{SH} + \text{LH}. \quad (7)$$

In addition, skin temperature (T_s) of the ice-sheet surface is inferred from upwelling longwave radiation, using the Stefan–Boltzmann law, assuming an emissivity of 1. For each 6-hourly interval with a positive SEB and T_s within 1 K of the melting point it is assumed that all available energy is used to melt snow. SMB is consequently calculated as the sum of total solid precipitation, evaporation and melt. As such, we assume that all melt immediately runs off and hence ignore refreezing of percolating meltwater.

Uncertainties exist in estimates of SMB. Contemporary best estimates of SMB integrated over the GrIS are based on RCMs and range between $388 \pm 103 \text{ Gt yr}^{-1}$ (1980–1999, Fettweis et al., 2013) and $406 \pm 98 \text{ Gt yr}^{-1}$ (1960–1990, Van Angelen et al., 2014). These time periods are still relatively short in climatological terms for an ice sheet. SMB estimates covering a much longer time period also exist, but typically rely on a PDD model to estimate melt and runoff, and combine data from reanalysis, weather stations and ice cores to calculate a SMB record. Following this approach, Hanna et al. (2011) estimated a GrIS SMB value of $368 \pm 129 \text{ Gt yr}^{-1}$ for the period 1871–2010, whereas Box (2013) found an average SMB value of $459 \pm 100 \text{ Gt yr}^{-1}$ for the period 1840–2010.

Here we compare different components of simulated SMB fields (1990–2012 averages), resulting from the use of dif-

ferent albedo schemes in EC-Earth, with components of the SMB climatology from RACMO2 (1960–1989), which has been extensively compared with observed SMB data (Ettema et al., 2009; Van Angelen et al., 2014).

The patterns of mean annual snowfall are very similar in all runs; therefore we only show the 23-year (1990–2012) snowfall climatology from the reference run with the unchanged albedo scheme in Fig. 3a. A comparison with RACMO2 (Van Angelen et al., 2014, Fig. 3b and c) shows that the general pattern of snowfall is captured well in EC-Earth, with accumulation maximums in the south-east, dry areas in central and northern Greenland, and weak local maximums along the western ice margin. The differences can be attributed to the lower resolution of EC-Earth, causing a more widespread zone of maximum snowfall, which leads to a wide band of overestimated snowfall over the southern part of the GrIS (positive values in Fig. 3c). The lower resolution misses more pronounced local maximums in snowfall along the south-eastern ice margin, which translates to local underestimation of snowfall (negative values in Fig. 3c). This is in broad agreement with results from Franco et al. (2012), who did RCM experiments with MAR on a range of spatial resolutions. Ice-sheet-integrated snowfall of the EC-Earth reference run is 95 Gt yr^{-1} larger than snowfall from RACMO2 (Table 2), but uncertainty estimates based on the interannual variability from these fields are quite large.

The differences in albedo directly affect simulated melt (Fig. 4). Melt is simulated in the southern part and on relatively low-lying areas on the GrIS. As expected, more melt is simulated with decreasing summertime albedo. In reality, the most pronounced (and extensive) ablation area of the GrIS is situated along the western margin at $\sim 67^\circ \text{ N}$, but in EC-Earth this region does not stand out as a major ablation area. Compared to RACMO2, melt is underestimated for this area in all runs (Fig. 4e–h), but overestimated in the north-western, southern and south-eastern margin. RMSD values of melt indicate that the Utr-8 performs best with respect to the reproduction of the melt pattern.

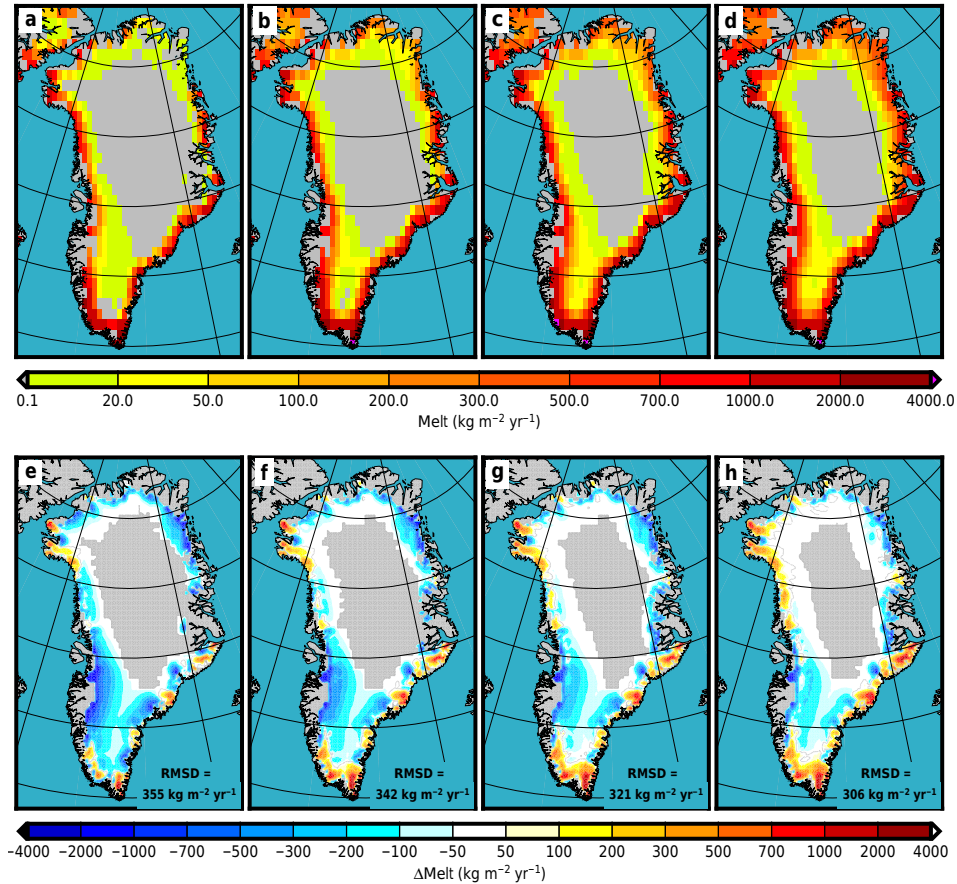


Figure 4. Average melt (1990–2012) from the reference run (a) and modified albedo schemes Sto (b), Cph (c) and Utr-8 (d). Difference with melt from RACMO2 (Van Angelen et al., 2014) is shown in (e–h).

The overestimation of melt may be due to a difference in topography of the GrIS as represented in EC-Earth and in reality, which will be investigated below. The differences in melt rate between EC-Earth and RACMO2 may also be influenced by biases in incoming radiation. However, a comparison of incoming shortwave and longwave radiation between EC-Earth and RACMO2 reveals that the differences in incoming shortwave radiation are mostly small over the ice sheet. Downwelling longwave radiation is slightly higher in EC-Earth than in RACMO2, suggesting warmer air over the ice sheet in EC-Earth. This difference is most pronounced over the ice marginal area. From this we conclude that biases in incoming radiation do not play an important role in explaining the pattern of the difference in melt rate.

An additional effect of the use of a time-evolving albedo scheme is an increase of interannual variability in melt (Table 2). Qualitatively, this can be explained by the snow-albedo feedback: years with little snowfall will experience more melt due to a low albedo, whereas in years with frequent snowfall, albedo is kept high and melt rates remain lower.

A comparison of the simulated SMB distribution (1990–2012 averages, Fig. 5), resulting from the use of different albedo schemes in EC-Earth, with the SMB climatology from RACMO2 reveals that the general distribution of SMB over Greenland is to a reasonable extent captured by EC-Earth: high accumulation in the south-east, a zone of high SMB over the western GrIS, a dry northern interior and ablation areas along the western, north-western and north-eastern margins. However, the ablation areas in EC-Earth are locally not large enough, and the amount of ablation is also underestimated. Note that the ice mask used in EC-Earth is somewhat larger than the ice mask in RACMO2, so the different fields (Figs. 4e–h and 5e–h) are only shown for common grid points.

We can compute ice-sheet-integrated values of the SMB components by summing over the entire ice-sheet area (Table 2). All numbers for EC-Earth are computed on the same ice-sheet mask (Howat et al., 2014) and mapped to a 20 km rectangular grid; values outside this mask are disregarded. Note that ice-sheet-integrated SMB values for EC-Earth can be computed from the components in Table 2 ($SMB = SF - E - R$). This is not the case for RACMO2, since this SMB

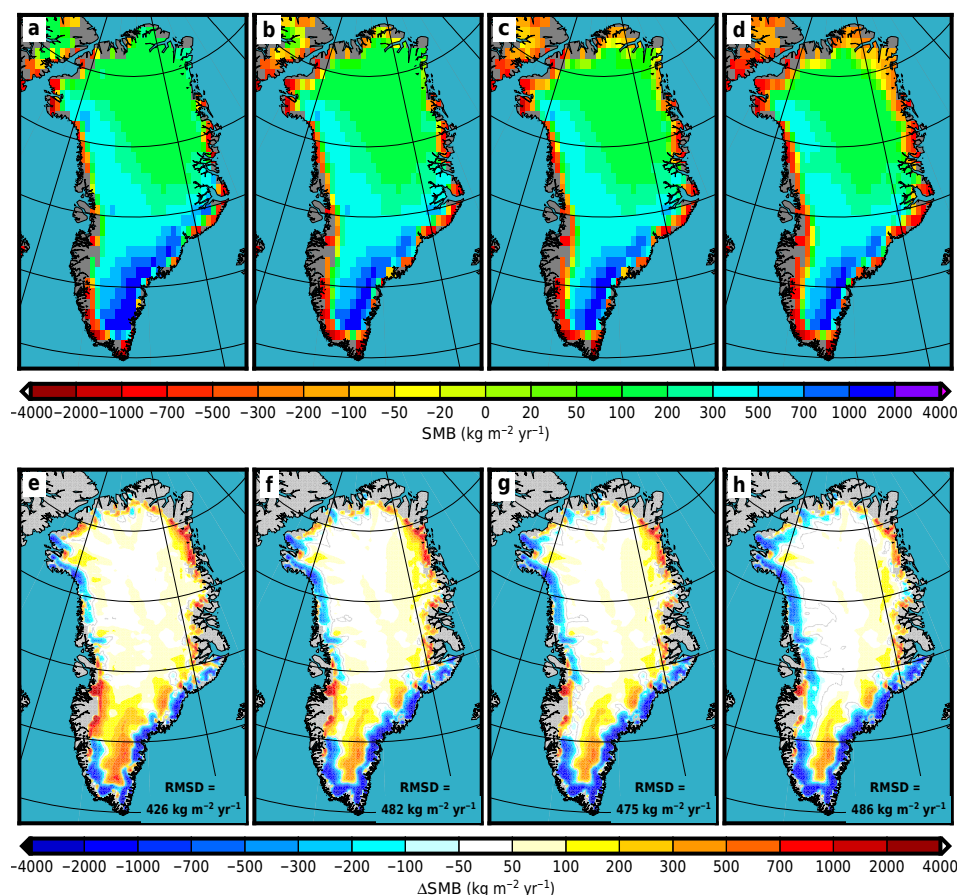


Figure 5. Average SMB (1990–2012) from the reference run (a) and from runs using modified albedo schemes Sto (b), Cph (c) and Utr-8 (d). Difference with SMB from RACMO2 (Van Angelen et al., 2014) is shown in (e–h).

Table 2. GrIS area-integrated values of SMB components (SF is snowfall, E is evaporation, M is melt, R is run-off, SMB is surface mass balance; all numbers are given in Gt yr⁻¹). The uncertainty estimate is the standard deviation from the interannual variability.

	ref	Sto	Cph	Utr-5	Utr-6	Utr-7	Utr-8	Utr-9	RACMO2*
SF	768 ± 72	736 ± 85	754 ± 69	761 ± 67	768 ± 56	733 ± 63	731 ± 94	762 ± 75	673 ± 76
E	18 ± 4	20 ± 3	21 ± 3	26 ± 2	18 ± 3	23 ± 3	24 ± 4	37 ± 4	41 ± 3
M	270 ± 28	371 ± 56	418 ± 45	460 ± 634	389 ± 59	443 ± 87	480 ± 92	693 ± 165	436 ± 68
R	–	–	–	–	–	–	–	–	258 ± 49
SMB	479 ± 85	345 ± 121	315 ± 88	274 ± 102	361 ± 85	267 ± 123	227 ± 152	32 ± 152	407 ± 111
Downscaled-SMB	327 ± 85	208 ± 121	190 ± 88	159 ± 1024	225 ± 85	151 ± 123	115 ± 152	–66 ± 152	198 ± 111

* RACMO2 data are computed for the period 1960–1989 and are projected onto the ice mask at 20 km resolution to ensure a fair comparison, but this causes small differences with the original data reported in Van Angelen et al. (2014).

calculation also includes a rain fraction, which is assumed to directly run off in the calculation of SMB in EC-Earth.

Using the standard albedo scheme in EC-Earth, this results in a remarkably good match with ice-sheet-integrated SMB from RACMO2, but in fact the spatial distribution of the mismatch shows that the standard albedo scheme in EC-Earth leads to a large underestimation of the major ablation areas, which is compensated by ablation areas in the south that are much larger than in RACMO2. Next to that,

the larger accumulation in EC-Earth also influences the ice-sheet-integrated SMB. The revised albedo schemes have led to a somewhat better representation of the ablation areas, indicating better agreement of the melt rates with respect to the RACMO2 estimate. However, while melt rates are simulated better, the match with ice-sheet-integrated SMB values deteriorates with respect to RACMO2. This can be largely attributed to the neglect of refreezing in the SMB budget (Table 2).

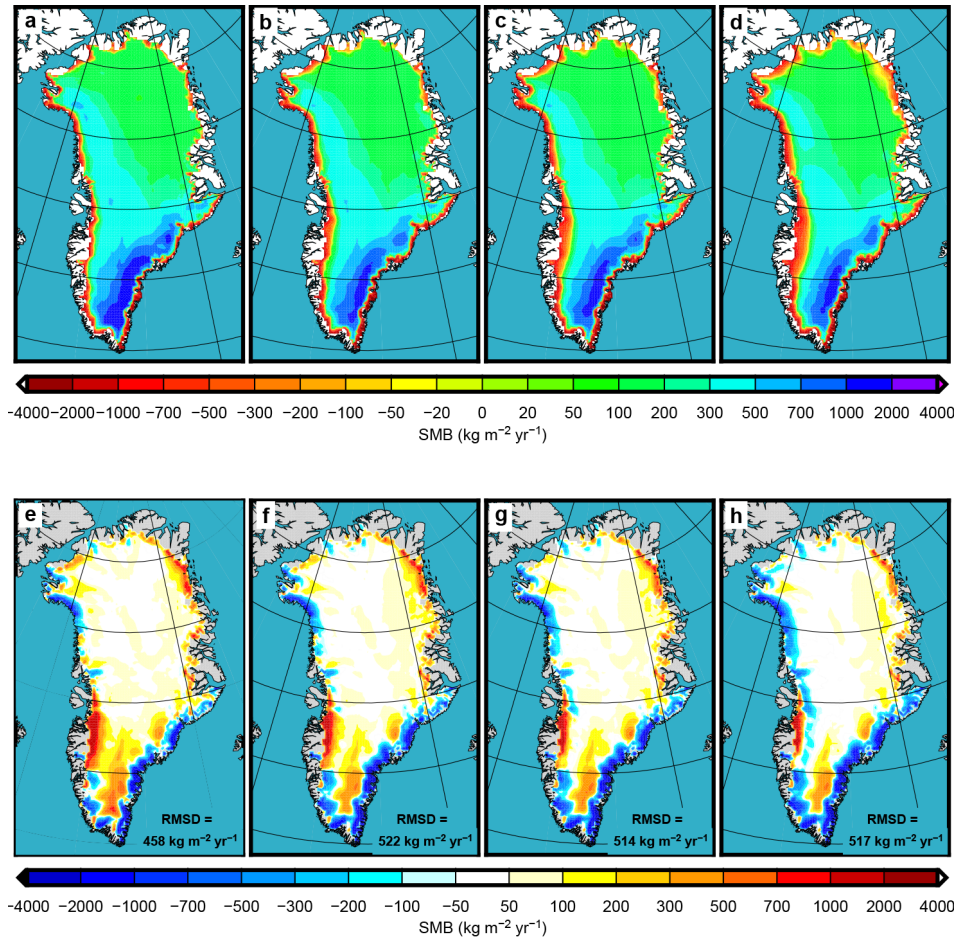


Figure 6. Downscaled SMB from the reference run (a) and from runs using albedo schemes Sto (b), Cph (c) and Utr-8 (d) and the difference with SMB_{RACMO2} (e–h).

This can also be illustrated by a closer inspection of the SMB pattern and its components at the western margin of the GrIS at $\sim 67^\circ$ N. SMB is strongly overestimated in the reference run of EC-Earth in this area (Fig. 5a and e). This is not surprising, considering the constant value of $\alpha_{\text{sn}} = 0.80$ applied in this run, strongly limiting the role of absorbed solar radiation in SEB and leading to an underestimation of the melt rate. When α_{sn} is allowed to decrease in response to the occurrence of meltwater, the underestimation of the melt becomes smaller. The albedo scheme Utr-8 even leads to lower SMB values compared to RACMO2 in the higher parts of the western ice-sheet margin at $\sim 67^\circ$ N (blue colours in Fig. 5h), despite a local underestimation of the melt (Fig. 4h), and only a minor difference in snowfall (Fig. 3h). The key factor that explains this mismatch is our assumption that all melt translates into run-off; i.e. the buffering effect of refreezing is neglected.

Apart from the quite simple snow scheme, the relatively coarse resolution (a spectral resolution of T255 translates to ~ 78 km horizontal grid spacing) is an important factor that hampers a realistic representation of the SMB over Green-

land. In some areas, steep topography cannot be resolved, producing associated errors in SMB. To downscale the SMB field from EC-Earth to a higher-resolution topography that is used for ISM simulations, we use the SMB gradient approach (Helsen et al., 2012). Local spatial gradients of SMB as a function of surface elevation are used to correct the SMB for a mismatch between the surface topography in the climate model and the true ice-sheet topography. For the latter we use the surface elevation field and ice-sheet mask from Howat et al. (2014), regridded to a 20 km resolution using the mapping method OBLIMAP (Reerink et al., 2010, 2016) to facilitate ISM simulations (see below). SMB gradients are computed for each SMB field, and resulting downscaled SMB fields are shown in Fig. 6.

The overall effect of this procedure is an increase in melt and a decrease in SMB (Table 2). This can be mainly attributed to an increase of low-lying topography within the ablation zone of the ice sheet, resulting in more negative SMB. RMSD values of downscaled SMB are not improved, but regionally we can see an improved pattern of increased ablation area, which is of importance for ice-sheet simulation (see be-

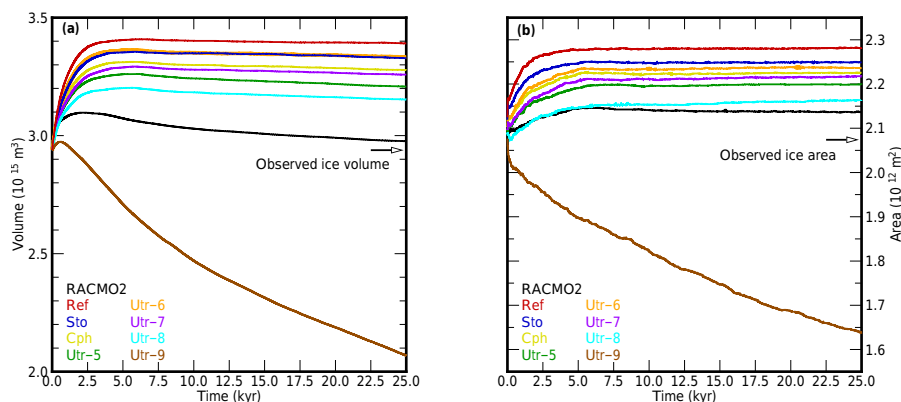


Figure 7. Ice volume (a) and area (b) resulting from simulations forced with different climatologies.

low). This is particularly the case on the western ablation area at $\sim 67^\circ\text{N}$: it can be seen that SMB on the EC-Earth topography was not negative enough in the lower reaches in the ablation zone, whereas it was too low in the upper part of the ablation zone (Fig. 5). Although this pattern of mismatch is still present, it is improved due to the downscaling step. The decrease in RACMO2 SMB after regridding is due to a larger ice-sheet mask in the ISM, adding primarily ablation area.

4 Ice-sheet simulations

Finally we test the effect of the different parameter values in the albedo parameterization on long-term simulations of a GrIS ISM. We performed simulations using the 3-D thermomechanical ISM IMAU-ICE (previously known as AN-ICE, Van de Wal, 1999a, b; Bintanja and Van de Wal, 2008; Graverson et al., 2011; Helsen et al., 2012, 2013; de Boer et al., 2014), based on the Shallow Ice Approximation (SIA, Hutter, 1983). No ice shelf dynamics are included; as soon as the ice advances into ocean water and its thickness is not large enough to stay grounded, it breaks off. As such, calving by means of a floatation criterion is included, but calving physics are not explicitly incorporated.

The ISM calculates ice flow, thermodynamics and bedrock response on a rectangular domain of 141×91 grid points with a grid spacing of 20 km. Initial bedrock elevation and ice thickness are taken from Bamber et al. (2013) and Howat et al. (2014). Initialization of the internal ice temperatures is obtained by using the Robin solution based on surface temperature and SMB (Van Angelen et al., 2014) and a spatially distributed geothermal heat flux (Shapiro and Ritzwoller, 2004). Internal ice temperatures in the ablation zone are initialized as a linear profile between the surface temperature and the pressure melting point at the ice-sheet base.

Several 25 kyr runs are carried out using the 23-year mean SMB forcing fields resulting from the different choices in albedo parameters. To take into account the influence of topography changes on surface temperature, a uniform lapse

rate of -7.4 K km^{-1} is applied. The influence of topography changes on SMB (height–mass balance effect) is parameterized by calculating a new SMB forcing field at each time step using SMB gradients (Helsen et al., 2012). These gradients are computed for each grid point, from a linear regression between surface elevation and mean SMB values in an area with a radius of 150 km. This allows the ice sheet to advance outside the initial ice-sheet mask, but also can lead to substantial retreat when ice-sheet thinning occurs (Helsen et al., 2012).

After 25 kyr of simulation, all but one of the simulated ice sheets are larger than the initial (present-day) volume and area and close to steady state (Fig. 7). Only the ice sheet forced by the Utr-9 climatology resulted in ice-sheet collapse. This is expected, as it is the only climatology with an initial negative SMB (Table 2), which suggests that the α_{\min} value of 0.45 of albedo scheme Utr-9 is too low. However, this result might be different if the model accounted for re-freezing, which would lead to a higher SMB, perhaps up to the point that the ice sheet will be stable. Hence, our results are strongly determined by the characteristics of our snow scheme.

The ISM run forced by the RACMO2 climatology results in an ice volume and area that are most comparable to the present-day state (Howat et al., 2014), in spite of the fact that several EC-Earth schemes result in lower ice-sheet-integrated SMB (Table 2). This points out that the spatial distribution of SMB is important to the evolution of the ice sheet, rather than the overall numbers.

Figure 8 shows steady-state ice-sheet elevation, and the difference of ice thickness with respect to the present day. A common feature is the negative anomaly in ice thickness in the ice-sheet interior, which is commonly seen in SIA-type models, but can also be partly attributed to the fact that these simulations are in steady state with the present-day climate, whereas the current GrIS contains colder ice originating from the last glacial period.

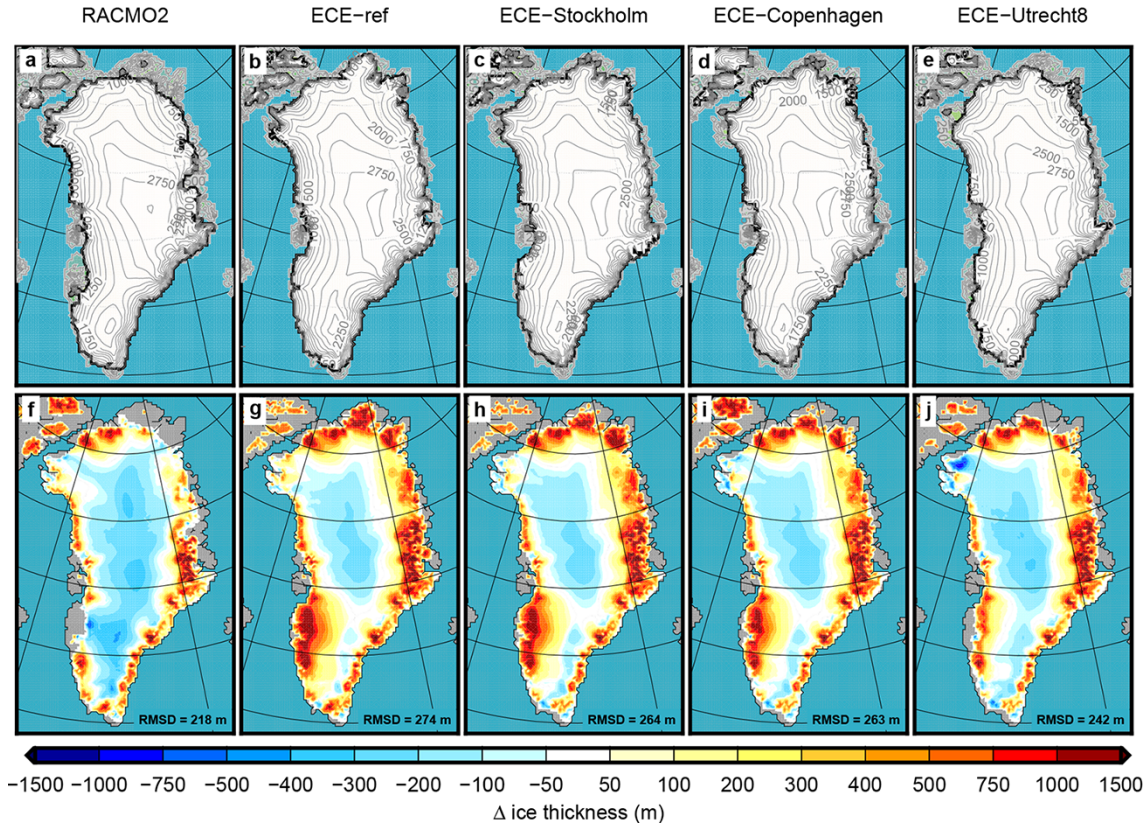


Figure 8. Ice-sheet surface elevation (a–e) and difference of ice thickness with present-day (f–j) resulting from 25 000-year simulations forced with different climatologies. Root mean square deviation (RMSD) is given as a measure for the mismatch between simulated and observed ice thickness.

Another common feature in all simulations is ice growth (almost) all around the ice sheet. We cannot simply attribute this to an underestimation of the total melt, as it also occurs in the run forced with the RACMO2 climatology, and even in EC-Earth forced runs with more melt (and thus run-off) than the RACMO2 climatology. Rather, the ice-sheet thickening at the margins is a combination of different factors. Local ablation zones are not captured well by the SMB products everywhere when the resolution of the climate model is not fine enough. In these cases, applying the downscaling method does not make much of a difference, as the resulting SMB gradients are not steep enough. This underestimation of ablation area results in ice-sheet advance. Consequently, the height–mass balance effect results in an amplification of the initial perturbations. In addition, SIA-type ISM simulations suffer from a lack of fast-flowing outlet glacier dynamics, which explains part of the thickening in all areas where the ice sheet predominantly loses its mass through iceberg calving of narrow outlet glaciers. This is also caused by the limited spatial resolution of 20 km which does not resolve most of the fjord systems and hampers a correct simulation of ice loss due to calving of outlet glaciers. The ice sheet thus

needs to advance to a point in contact with the ocean in order to lose its mass by calving.

From all ice-sheet simulations forced with EC-Earth climatologies, we regard the simulation Utr-8 as the best match with the observed ice-sheet thickness and extent. It has the lowest RMSD value (Fig. 8f–j), and the simulated ice volume and area are closest to the present day observed value. The limited mismatch of the south-western ice margin at $\sim 67^\circ$ N stands out, where other simulations show a much further advanced ice sheet towards the coastline. Also at other locations (north and north-east), the current position of the GrIS margin is best simulated using the Utr-8 SMB forcing.

5 Discussion

The performance of the different albedo schemes is described in terms of the temporal evolution at distinct locations, and in terms of the spatial pattern of α_{sn} in the ablation season. Apart from that, the different albedo schemes are evaluated in terms of their ability to generate a realistic SMB forcing for ice-sheet simulations, in contrast to a direct comparison to observed albedo. This is a deliberate choice, which fits our goal of developing an earth system model that includes inter-

active ice sheets. In such a model framework, it is an endeavour to simulate a GrIS that remains close to the present-day size under late-Holocene climate forcing; i.e. the ice sheet should not grow significantly larger, nor should it retreat far from its present-day margin. To this end, we use the albedo parameterization as a calibration tool, since the sensitivity of ice-sheet evolution to snow albedo is shown to be large. Our results show that this procedure is able to generate an ice sheet that remains reasonably close to the present-day size. However, we do not claim that our proposed albedo scheme is physically superior to other schemes. Discrepancies remain, for example with respect to the spatial distribution of SMB. Due to error compensation, the best parameters found here make up for model flaws (e.g. in the simplistic snow albedo scheme, but also in the limitations of the ISM) or other unknown flaws, which might lead to errors in future projections. Nevertheless, based on the agreement in ice-sheet area and volume, the Utr-8 albedo parameterization seems the best parameter setting within the set of albedo schemes to be used in EC-Earth simulations with the current snow scheme and an interactive ice-sheet component. Adding a more sophisticated snow scheme will likely change optimal choices for albedo parameters.

Our modifications of the EC-Earth albedo scheme do not yet lead to a SMB forcing field that is of equal quality to that produced by climate models using more sophisticated snow schemes (e.g. Vizcaíno et al., 2013; Fettweis et al., 2013; Van Angelen et al., 2014). An important omission of the snow albedo scheme in EC-Earth over ice sheets as described here is that it does not distinguish between melting ice and melting snow. This has particular implications for the ablation zone, where the seasonal removal and reappearance of a snow/firn layer strongly influence the seasonal cycle of the albedo, determining the start of the ablation season. The pattern of underestimated SMB in the lower ablation zone and overestimated melt in the higher parts (Figs. 5h and 6h) is likely partly an effect of this lack of discrimination between wet snow and ice albedo, and does not account for the effect of impurity content. Moreover, this effectively means that the effects of liquid water in snow and the (lower) albedo of bare ice with or without impurities are lumped into one exponential function for melting conditions. This may explain our result that the rapid exponential decay ($\tau_{\text{melt}} = 1$ day) and the relatively low minimum albedo ($\alpha_{\text{min}} = 0.50$) provide best results. More adjustments to the snow scheme are necessary to enable a distinction between the bare ice area and the firn-covered ice sheet. This is not feasible for this study, but it is a key recommendation for improvement in the future development of the land surface model.

The snow albedo scheme in EC-Earth is diagnostic, as albedo depends on the time past since last snowfall. This type of albedo parameterization is of similar complexity to snow albedo schemes in other GCMs (e.g. CNRM, Voldoire et al., 2013; MIROC, Watanabe et al., 2010). For a further improvement of the description of snow albedo, the snow model

needs to include snow grain size evolution to enable calculations of snow albedo as a function of grain size, such as those used in CESM (Lipscomb et al., 2013).

Another omission in our SMB calculation is the effect of refreezing percolating meltwater. Refreezing has a buffering effect on mass loss by run-off, especially at the equilibrium line and higher. Accordingly, neglecting the effect of refreezing provides an explanation for the underestimation of SMB around the equilibrium line in Fig. 5h. An extension of the number of layers in the snow model can improve the simulation of refreezing percolating meltwater. This will considerably decrease the total run-off and hence improve simulated ice-sheet-integrated SMB values compared to contemporary assessments from RCMs. Moreover, accurately describing the effect of refreezing will improve the spatial distribution of SMB, which is of great importance for interactive climate–ice-sheet model simulations.

The problem of a difference in horizontal resolution between climate model and ISM is circumvented here by applying a correction to the SMB fields based on the difference in elevation (Helsen et al., 2012). This method is based on the spatially varying relations between surface elevation and SMB. Similar efforts to parameterize the SMB–elevation feedback exist. Instead of deriving a spatial relation of SMB with elevation, Franco et al. (2012) and Noël et al. (2016) correlate individual SMB components to elevation. Edwards et al. (2014) uses a suite of climate simulations with different GrIS topographies to derive SMB–elevation gradients. The latter study does not allow spatially varying relations, apart from distinguishing between northern and southern Greenland, and above and below the equilibrium line. We applied the method by Helsen et al. (2012) because it offers more spatial variability and can be applied outside the current ice-sheet mask, a prerequisite for long-term ISM simulations. An alternative approach to correcting for the SMB–elevation feedback effects due to differences in spatial resolution is described by Vizcaíno et al. (2013) and Lipscomb et al. (2013), who solve SEB and SMB in different sub-grid elevation classes in the CESM land model, and subsequently downscale SMB to the high-resolution ISM grid (see Sect. 1). However, their approach only partly allows energy balance terms to vary with elevation, and keeps incoming radiative terms constant for each climate model grid point. The most physically sound solution for this issue will come with increasing computer power, allowing climate models to fully solve the energy balance at sufficiently high resolution. Moreover, one-to-one ISM–GCM coupling will most adequately account for the height–mass balance feedback.

6 Conclusions

We have extended the albedo parameterization over the GrIS in the earth system model EC-Earth to replace the constant value of 0.80 over perennial snow in EC-Earth. We applied different exponentially decaying functions to account for the slow and fast responses of α_{sn} in dry and wet conditions respectively. Our results show that small adjustments to the albedo scheme significantly influence the SMB over Greenland. This in turn affects the ice-sheet response, implying consequences for coupled ice-sheet–climate simulations in an earth system model framework. The height–mass balance effect that we parameterized here using a relation of SMB with surface elevation will be more accurately solved when ice-sheet elevation and extent are given back to the climate model. Based on the ice-sheet simulations, the Utr-8 albedo parameterization seems the most suitable albedo scheme to be used in EC-Earth simulations with an interactive ice-sheet component. However, based on the different results obtained with a climate forcing from a RCM, our results emphasize the importance of capturing the spatial distribution of the SMB, rather than the ice-sheet-integrated number. We note that the physics of the albedo scheme can still be greatly improved with the inclusion of a multilayer snow model component in the land surface component of EC-Earth to better account for the refreezing of percolating meltwater in snow, and to distinguish between bare ice and snow. Hence, further improvements of the snow scheme are crucial for the development of earth system models that include an interactive ice-sheet component.

Data availability. The model output data and scripts for running experiments and creating figures are stored in an archive at the Institute for Marine and Atmospheric research Utrecht. They are available upon request.

Competing interests. The authors declare that they have no conflict of interest.

Special issue statement. This article is part of the special issue “Mass balance of the Greenland Ice Sheet”. It is not associated with a conference.

Acknowledgements. Michiel M. Helsen was supported by The Netherlands Polar Programme (NPP) of the Earth and Life Sciences division of The Netherlands Organisation for Scientific Research (NWO/ALW). Thomas J. Reerink was financially supported by the Netherlands Earth System Science Centre (NESSC, NWO/ALW). Marianne S. Madsen and Shuting Yang were partly supported by Nordic Centers of Excellence eSTICC (sScience Tool for Investigating Climate Change in northern high latitudes) and SVALI (Stability and Variations of Arctic Land Ice), funded by Nordforsk (grant 57001 and grant 24420).

Edited by: Marco Tedesco

Reviewed by: Xavier Fettweis and two anonymous referees

References

- Alexander, P. M., Tedesco, M., Fettweis, X., van de Wal, R. S. W., Smeets, C. J. P. P., and van den Broeke, M. R.: Assessing spatio-temporal variability and trends in modelled and measured Greenland Ice Sheet albedo (2000–2013), *The Cryosphere*, 8, 2293–2312, <https://doi.org/10.5194/tc-8-2293-2014>, 2014.
- Bamber, J. L., Griggs, J. A., Hurkmans, R. T. W. L., Dowdeswell, J. A., Gogineni, S. P., Howat, I., Mouginot, J., Paden, J., Palmer, S., Rignot, E., and Steinhage, D.: A new bed elevation dataset for Greenland, *The Cryosphere*, 7, 499–510, <https://doi.org/10.5194/tc-7-499-2013>, 2013.
- Bintanja, R. and Van de Wal, R. S. W.: North American ice-sheet dynamics and the onset of 100,000-year glacial cycles, *Nature*, 454, 869–872, 2008.
- Bøggild, C. E., Brandt, R. E., Brown, K. J., and Warren, S. G.: The ablation zone in northeast Greenland: ice types, albedos and impurities, *J. Glaciol.*, 56, 101–113, <https://doi.org/10.3189/002214310791190776>, 2010.
- Bougamont, M., Bamber, J., and Greuell, W.: A surface mass balance model for the Greenland Ice Sheet, *J. Geophys. Res.*, 110, F04018, <https://doi.org/10.1029/2005JF000348>, 2005.
- Box, J. E.: Greenland Ice Sheet Mass Balance Reconstruction. Part II: Surface Mass Balance (1840–2010), *J. Climate*, 26, 6974–6989, <https://doi.org/10.1175/JCLI-D-12-00518.1>, 2013.
- Box, J. E., Van As, D., Steffen, K., Fausto, R. S., Ahlstrøm, A. P., Citterio, M., and Andersen, S. B.: Greenland, Canadian and Icelandic land ice albedo grids (2000–2016), *Geol. Surv. Den. Greenl.*, 38, 69–72, 2017.
- Colgan, W., Sommers, A., Rajaram, H., Abdalati, W., and Frahm, J.: Considering thermal-viscous collapse of the Greenland ice sheet, *Earth's Future*, 3, 252–267, <https://doi.org/10.1002/2015EF000301>, 2015.
- de Boer, B., Stocchi, P., and van de Wal, R. S. W.: A fully coupled 3-D ice-sheet–sea-level model: algorithm and applications, *Geosci. Model Dev.*, 7, 2141–2156, <https://doi.org/10.5194/gmd-7-2141-2014>, 2014.
- Dee, D. P., Uppala, S. M., Simmons, A. J., Berrisford, P., Poli, P., Kobayashi, S., Andrae, U., Balmaseda, M. A., Balsamo, G., Bauer, P., Bechtold, P., Beljaars, A. C. M., van de Berg, L., Bidlot, J., Bormann, N., Delsol, C., Dragani, R., Fuentes, M., Geer, A. J., Haimberger, L., Healy, S. B., Hersbach, H., Hólm, E. V., Isaksen, I., Kållberg, P., Köhler, M., Matricardi, M., McNally, A. P., Monge-Sanz, B. M., Morcrette, J.-J., Park, B.-K., Peubey, C., de Rosnay, P., Tavolato, C., Thépaut, J.-N., and Vitart, F.: The ERA-Interim reanalysis: configuration and performance of the data assimilation system, *Q. J. Roy. Meteor. Soc.*, 137, 553–597, <https://doi.org/10.1002/qj.828>, 2011.
- Douville, H., Royer, J.-F., and Mahfouf, J.-F.: A new snow parameterization for the Météo-France climate model. Part I: validation in stand-alone experiments, *Clim. Dynam.*, 12, 21–35, 1995.
- Dutra, E., Balsamo, G., Viterbo, P., Miranda, P. M. A., Beljaars, A., Schär, C., and Elder, K.: An Improved Snow Scheme for the ECMWF Land Surface Model: Descrip-

- tion and Offline Validation, *J. Hydrometeorol.*, 11, 899–916, <https://doi.org/10.1175/2010JHM1249.1>, 2010.
- Edwards, T. L., Fettweis, X., Gagliardini, O., Gillet-Chaulet, F., Goelzer, H., Gregory, J. M., Hoffman, M., Huybrechts, P., Payne, A. J., Perego, M., Price, S., Quiquet, A., and Ritz, C.: Probabilistic parameterisation of the surface mass balance-elevation feedback in regional climate model simulations of the Greenland ice sheet, *The Cryosphere*, 8, 181–194, <https://doi.org/10.5194/tc-8-181-2014>, 2014.
- Ettema, J., Van den Broek, M. R., Van Meijgaard, E., Van de Berg, W. J., Bamber, J. L., Box, J. E., and Bales, R. C.: Higher surface mass balance of the Greenland ice sheet revealed by high-resolution climate modeling, *Geophys. Res. Lett.*, 36, L12501, <https://doi.org/10.1029/2009GL038110>, 2009.
- Fettweis, X., Franco, B., Tedesco, M., van Angelen, J. H., Lenaerts, J. T. M., van den Broeke, M. R., and Gallée, H.: Estimating the Greenland ice sheet surface mass balance contribution to future sea level rise using the regional atmospheric climate model MAR, *The Cryosphere*, 7, 469–489, <https://doi.org/10.5194/tc-7-469-2013>, 2013.
- Franco, B., Fettweis, X., Lang, C., and Erpicum, M.: Impact of spatial resolution on the modelling of the Greenland ice sheet surface mass balance between 1990–2010, using the regional climate model MAR, *The Cryosphere*, 6, 695–711, <https://doi.org/10.5194/tc-6-695-2012>, 2012.
- Gardner, A. S. and Sharp, M. J.: A review of snow and ice albedo and the development of a new physically based broadband albedo parameterization, *J. Geophys. Res.*, 115, F01009, <https://doi.org/10.1029/2009JF001444>, 2010.
- Graversen, R. G., Drijfhout, S., Hazeleger, W., Van de Wal, R., Bintanja, R., and Helsen, M.: Greenland's contribution to global sea-level rise by the end of the 21st century, *Clim. Dynam.*, 37, 1427–1442, <https://doi.org/10.1007/s00382-010-0918-8>, 2011.
- Greuell, W. and Genthon, C.: Modelling land-ice surface mass balance, in: *Mass balance of the cryosphere: observations and modelling of contemporary and future changes*, edited by: Bamber, J. and Payne, T., Cambridge University Press, Cambridge, 117–168, 2004.
- Hanna, E., Huybrechts, P., Cappelen, J., Steffen, K., Bales, R. C., Burgess, E., McConnell, J. R., Peder Steffensen, J., Van den Broeke, M., Wake, L., Bigg, G., Griffiths, M., and Savas, D.: Greenland Ice Sheet surface mass balance 1870 to 2010 based on Twentieth Century Reanalysis, and links with global climate forcing, *J. Geophys. Res.*, 116, D24121, <https://doi.org/10.1029/2011JD016387>, 2011.
- Hazeleger, W., Severijns, C., Semmler, T., Ștefănescu, S., Yang, S., Wang, X., Wyser, K., Dutra, E., Baldasano, J., Bintanja, R., Bougeault, P., Caballero, R., Ekman, A. M. L., Christensen, J. H., van den Hurk, B., Jimenez, P., Jones, C., Kållberg, P., Koenigk, T., McGrath, R., Miranda, P., Van Noije, T., Palmer, T., Parodi, J., Schmith, T., Selten, F., Storelvmo, T., Sterl, A., Tapamo, H., Vancoppenolle, M., Viterbo, P., and Willén, U.: EC-Earth: A Seamless Earth-System Prediction Approach in Action, *B. Am. Meteorol. Soc.*, 91, 1357–1363, <https://doi.org/10.1175/2010BAMS2877.1>, 2010.
- Hazeleger, W., Wang, X., Severijns, C., Ștefănescu, S., Bintanja, R., Sterl, A., Wyser, K., Semmler, T., Yang, S., Van den Hurk, B., Van Noije, T., Van der Linden, E., and Van der Wiel, K.: EC-Earth V2.2: description and validation of a new seamless earth system prediction model, *Clim. Dynam.*, 39, 2611–2629, <https://doi.org/10.1007/s00382-011-1228-5>, 2012.
- Helsen, M. M., van de Wal, R. S. W., van den Broeke, M. R., van de Berg, W. J., and Oerlemans, J.: Coupling of climate models and ice sheet models by surface mass balance gradients: application to the Greenland Ice Sheet, *The Cryosphere*, 6, 255–272, <https://doi.org/10.5194/tc-6-255-2012>, 2012.
- Helsen, M. M., van de Berg, W. J., van de Wal, R. S. W., van den Broeke, M. R., and Oerlemans, J.: Coupled regional climate–ice–sheet simulation shows limited Greenland ice loss during the Eemian, *Clim. Past*, 9, 1773–1788, <https://doi.org/10.5194/cp-9-1773-2013>, 2013.
- Hostetler, S. W., Bartlein, P. J., Clark, P. U., Small, E. E., and Solomon, A. M.: Simulated influence of Lake Agassiz on the climate of Central North America 11,000 years ago, *Nature*, 405, 334–337, 2000.
- Howat, I. M., Negrete, A., and Smith, B. E.: The Greenland Ice Mapping Project (GIMP) land classification and surface elevation data sets, *The Cryosphere*, 8, 1509–1518, <https://doi.org/10.5194/tc-8-1509-2014>, 2014.
- Hutter, K.: *Theoretical glaciology: material science of ice and the mechanics of glaciers and ice sheets*, Reidel Publ. Co., Dordrecht, 1983.
- Kjeldsen, K. K., Korsgaard, N. J., Bjørk, A. A., Khan, S. A., Box, J. E., Funder, S., Larsen, N. K., Bamber, J. L., Colgan, W., van den Broeke, M., Siggaard-Andersen, M.-L., Nuth, C., Schomacker, A., Andresen, C. S., Willerslev, E., and Kjær, K. H.: Spatial and temporal distribution of mass loss from the Greenland Ice Sheet since AD 1900, *Nature*, 528, 396–400, <https://doi.org/10.1038/nature16183>, 2015.
- Kuipers Munneke, P., Van den Broeke, M. R., Lenaerts, J. T. M., Flanner, M. G., Gardner, A. S., and Van de Berg, W. J.: A new albedo parameterization for use in climate models over the Antarctic ice sheet, *J. Geophys. Res.*, 116, D05114, <https://doi.org/10.1029/2010JD015113>, 2011.
- Lea, J. M., Mair, D. W. F., Nick, F. M., Rea, B. R., van As, D., Morlighem, M., Nienow, P. W., and Weidick, A.: Fluctuations of a Greenlandic tidewater glacier driven by changes in atmospheric forcing: observations and modelling of Kangiata Nunaata Sermia, 1859–present, *The Cryosphere*, 8, 2031–2045, <https://doi.org/10.5194/tc-8-2031-2014>, 2014.
- Lefebvre, F., Galée, H., Van Ypersele, J.-P., and Greuell, W.: Modeling of snow and ice melt at ETH Camp (West Greenland): A study of surface albedo, *J. Geophys. Res.*, 108, 4231, <https://doi.org/10.1029/2001JD001160>, 2003.
- Lipscomb, W. H., Fyke, J. G., Vizcaíno, M., Sacks, W. J., Wolfe, J., Vertenstein, M., Craig, A., Kluzek, E., and Lawrence, D. M.: Implementation and Initial Evaluation of the Glimmer Community Ice Sheet Model in the Community Earth System Model, *J. Climate*, 26, 7352–7371, <https://doi.org/10.1175/JCLI-D-12-00557.1>, 2013.
- Loth, B., Graf, H.-F., and Oberhuber, J. M.: Snow Cover Model for Global Climate Simulations, *J. Geophys. Res.*, 98, 10451–10464, 1993.
- Maris, M. N. A., de Boer, B., Ligtenberg, S. R. M., Crucifix, M., van de Berg, W. J., and Oerlemans, J.: Modelling the evolution of the Antarctic ice sheet since the last interglacial, *The Cryosphere*, 8, 1347–1360, <https://doi.org/10.5194/tc-8-1347-2014>, 2014.

- The HadGEM2 Development Team: Martin, G. M., Bellouin, N., Collins, W. J., Culverwell, I. D., Halloran, P. R., Hardiman, S. C., Hinton, T. J., Jones, C. D., McDonald, R. E., McLaren, A. J., O'Connor, F. M., Roberts, M. J., Rodriguez, J. M., Woodward, S., Best, M. J., Brooks, M. E., Brown, A. R., Butchart, N., Dearden, C., Derbyshire, S. H., Dharssi, I., Doutriaux-Boucher, M., Edwards, J. M., Falloon, P. D., Gedney, N., Gray, L. J., Hewitt, H. T., Hobson, M., Huddleston, M. R., Hughes, J., Ineson, S., Ingram, W. J., James, P. M., Johns, T. C., Johnson, C. E., Jones, A., Jones, C. P., Joshi, M. M., Keen, A. B., Liddicoat, S., Lock, A. P., Maidens, A. V., Manners, J. C., Milton, S. F., Rae, J. G. L., Ridley, J. K., Sellar, A., Senior, C. A., Totterdell, I. J., Verhoef, A., Vidale, P. L., and Wiltshire, A.: The HadGEM2 family of Met Office Unified Model climate configurations, *Geosci. Model Dev.*, 4, 723–757, <https://doi.org/10.5194/gmd-4-723-2011>, 2011.
- Noël, B., van de Berg, W. J., Machguth, H., Lhermitte, S., Howat, I., Fettweis, X., and van den Broeke, M. R.: A daily, 1 km resolution data set of downscaled Greenland ice sheet surface mass balance (1958–2015), *The Cryosphere*, 10, 2361–2377, <https://doi.org/10.5194/tc-10-2361-2016>, 2016.
- Reerink, T. J., Kliphuis, M. A., and van de Wal, R. S. W.: Mapping technique of climate fields between GCM's and ice models, *Geosci. Model Dev.*, 3, 13–41, <https://doi.org/10.5194/gmd-3-13-2010>, 2010.
- Reerink, T. J., van de Berg, W. J., and van de Wal, R. S. W.: OBLIMAP 2.0: a fast climate model–ice sheet model coupler including online embeddable mapping routines, *Geosci. Model Dev.*, 9, 4111–4132, <https://doi.org/10.5194/gmd-9-4111-2016>, 2016.
- Shapiro, N. M. and Ritzwoller, M. H.: Inferring surface heat flux distribution guided by a global seismic model: particular application to Antarctica, *Earth Planet. Sc. Lett.*, 233, 213–224, <https://doi.org/10.1016/j.epsl.2004.04.011>, 2004.
- Shepherd, A., Ivins, E. R., A. G., Barletta, V. R., Bentley, M. J., Bettadpur, S., Briggs, K. H., Bromwich, D. H., Forsberg, R., Galin, N., Horwath, M., Jacobs, S., Joughin, I., King, M. A., Lenaerts, J. T. M., Li, J., Ligtenberg, S. R. M., Luckman, A., Luthcke, S. B., McMillan, M., Meister, R., Milne, G., Mouginot, J., Muir, A., Nicolas, J. P., Paden, J., Payne, A. J., Pritchard, H., Rignot, E., Rott, H., Sørensen, L. S., Scambos, T. A., Scheuchl, B., Schrama, E. J. O., Smith, B., Sundal, A. V., van Angelen, J. H., van de Berg, W. J., van den Broeke, M. R., Vaughan, D. G., Velicogna, I., Wahr, J., Whitehouse, P. L., Wingham, D. J., Yi, D., Young, D., and Zwally, H. J.: A Reconciled Estimate of Ice-Sheet Mass Balance, *Science*, 338, 1183–1189, <https://doi.org/10.1126/science.1228102>, 2012.
- Simmons, A., Uppala, S., Dee, D., and Kobayashi, S.: ERA-Interim: new ECMWF reanalysis products from 1989 onwards, *ECMWF Newsletter*, 110, 25–35, 2007.
- Svendsen, S. H., Madsen, M. S., Yang, S., Rodehacke, C., and Aðalgeirsdóttir, G.: An Introduction to the Coupled EC-Earth-PISM Model System, Danish Meteorological Institute, Copenhagen, Scientific Report 15-05, 54 pp., 2015.
- Taylor, K. E., Stouffer, R. J., and Meehl, G. A.: An overview of CMIP5 and the experiment design, *B. Am. Meteorol. Soc.*, 93, 485–498, <https://doi.org/10.1175/BAMS-D-11-00094.1>, 2012.
- Uppala, S. M., Kållberg, P. W., Simmons, A. J., Andrae, U., Bechtold, V. D. C., Fiorino, M., Gibson, J. K., Haseler, J., Hernandez, A., Kelly, G. A., Li, X., Onogi, K., Saarinen, S., Sokka, N., Allan, R. P., Andersson, E., Arpe, K., Balmaseda, M. A., Beljaars, A. C. M., Berg, L. V. D., Bidlot, J., Bormann, N., Caires, S., Chevallier, F., Dethof, A., Dragosavac, M., Fisher, M., Fuentes, M., Hagemann, S., Hólm, E., Hoskins, B. J., Isaksen, I., Janssen, P. A. E. M., Jenne, R., McNally, A. P., Mahfouf, J.-F., Morcrette, J.-J., Rayner, N. A., Saunders, R. W., Simon, P., Sterl, A., Trenberth, K. E., Untch, A., Vasiljevic, D., Viterbo, P., and Woollen, J.: The ERA-40 re-analysis, *Q. J. Roy. Meteor. Soc.*, 131, 2961–3012, <https://doi.org/10.1256/qj.04.176>, 2005.
- Van Angelen, J. H., Van den Broeke, M. R., Wouters, B., and Lenaerts, J. T. M.: Contemporary (1960–2012) Evolution of the Climate and Surface Mass Balance of the Greenland Ice Sheet, *Surv. Geophys.*, 35, 1155–1174, <https://doi.org/10.1007/s10712-013-9261-z>, 2014.
- Van de Berg, W. J., Van den Broeke, M., Ettema, J., Van Meijgaard, E., and Kaspar, F.: Significant contribution of insolation to Eemian melting of the Greenland ice sheet, *Nat. Geosci.*, 4, 679–683, <https://doi.org/10.1038/ngeo1245>, 2011.
- Van de Wal, R. S. W.: The importance of thermodynamics for modeling the volume of the Greenland ice sheet, *J. Geophys. Res.*, 104, 3889–3898, 1999a.
- Van de Wal, R. S. W.: Processes of buildup and retreat of the Greenland ice sheet, *J. Geophys. Res.*, 104, 3899–3906, 1999b.
- Van de Wal, R. S. W. and Oerlemans, J.: An energy balance model for the Greenland ice sheet, *Global Planet. Change*, 9, 115–131, 1994.
- Van de Wal, R. S. W., Greuell, W., Van den Broeke, M. R., Reijmer, C. H., and Oerlemans, J.: Surface mass-balance observations and automatic weather station data along a transect near Kangerlussuaq, West Greenland, *Ann. Glaciol.*, 42, 311–316, 2005.
- Van den Broeke, M., Smeets, P., Ettema, J., and Kuipers Munneke, P.: Surface radiation balance in the ablation zone of the west Greenland ice sheet, *J. Geophys. Res.*, 113, D13105, <https://doi.org/10.1029/2007JD009283>, 2008.
- van den Broeke, M. R., Smeets, C. J. P. P., and van de Wal, R. S. W.: The seasonal cycle and interannual variability of surface energy balance and melt in the ablation zone of the west Greenland ice sheet, *The Cryosphere*, 5, 377–390, <https://doi.org/10.5194/tc-5-377-2011>, 2011.
- Vaughan, D. G., Comiso, J., Allison, I., Carrasco, J., Kaser, G., Kwok, R., Mote, P., Murray, T., Paul, F., Ren, J., Rignot, E., Solomina, O., Steffen, K., and Zhang, T.: Observations: Cryosphere, Chapter 4, in: *Climate Change 2013: The Physical Science Basis. Contribution of Working Group I to the Fifth Assessment Report of the Intergovernmental Panel on Climate Change*, edited by: Stocker, T. F., Qin, D., Plattner, G.-K., Tignor, M., Allen, S. K., Boschung, J., Nauels, A., Xia, Y., Bex, V., and Midgley, P. M., Cambridge University Press, Cambridge, United Kingdom and New York, NY, USA, 2013.
- Velicogna, I., Sutterley, T. C., and Van den Broeke, M. R.: Regional acceleration in ice mass loss from Greenland and Antarctica using GRACE time-variable gravity data, *Geophys. Res. Lett.*, 41, 8130–8137, <https://doi.org/10.1002/2014GL061052>, 2014.
- Viterbo, P. and Beljaars, A. C. M.: An improved land-surface parameterizationscheme in the ECMWF model and its validation, *J. Climate*, 8, 2716–2748, 1995.
- Vizcaíno, M.: Ice sheets as interactive component of Earth System Models: progress and challenges, *WIREs Clim. Change*, 5, 557–568, <https://doi.org/10.1002/wcc.285>, 2014.

- Vizcaíno, M., Lipscomb, W. H., Sacks, W. J., Van Angelen, J. H., Wouters, B., and Van den Broeke, M. R.: Greenland surface mass balance as simulated by the Community Earth System Model. Part I: Model evaluation and 1850–2005 results, *J. Climate*, 26, 7793–7812, <https://doi.org/10.1175/JCLI-D-12-00615.1>, 2013.
- Voldoire, A., Sanchez-Gomez, E., Salas y Mélia, D., Decharme, B., Cassou, C., Sénési, S., Valcke, S., Beau, I., Alias, A., Chevallier, M., Déqué, M., Deshayes, J., Douville, H., Fernandez, E., Madec, G., Maisonnave, E., Moine, M.-P., Planton, S., Saint-Martin, D., Szopa, S., Tyteca, S., Alkama, R., Belamari, S., Braun, A., Coquart, L., and Chauvin, F.: The CNRM-CM5.1 global climate model: description and basic evaluation, *Clim. Dynam.*, 40, 2091–2121, <https://doi.org/10.1007/s00382-011-1259-y>, 2013.
- Warren, S. G.: Optical Properties of Snow, *Rev. Geophys.*, 20, 67–89, <https://doi.org/10.1029/RG020i001p00067>, 1982.
- Watanabe, M., Suzuki, T., O'ishi, R., Komuro, Y., Watanabe, S., Emori, S., Takemura, T., Chikira, M., Ogura, T., Sekiguchi, M., Takata, K., Yamazaki, D., Yokohata, T., Nozawa, T., Hasumi, H., Tatebe, H., and Kimoto, M.: Improved Climate Simulation by MIROC5: Mean States, Variability, and Climate Sensitivity, *J. Climate*, 23, 6312–6335, <https://doi.org/10.1175/2010JCLI3679.1>, 2010.
- Wientjes, I. G. M. and Oerlemans, J.: An explanation for the dark region in the western melt zone of the Greenland ice sheet, *The Cryosphere*, 4, 261–268, <https://doi.org/10.5194/tc-4-261-2010>, 2010.
- Wientjes, I. G. M., Van de Wal, R. S. W., Reichert, G. J., Sluijs, A., and Oerlemans, J.: Dust from the dark region in the western ablation zone of the Greenland ice sheet, *The Cryosphere*, 5, 589–601, <https://doi.org/10.5194/tc-5-589-2011>, 2011.
- Ziemen, F. A., Rodehacke, C. B., and Mikolajewicz, U.: Coupled ice sheet-climate modeling under glacial and pre-industrial boundary conditions, *Clim. Past*, 10, 1817–1836, <https://doi.org/10.5194/cp-10-1817-2014>, 2014.