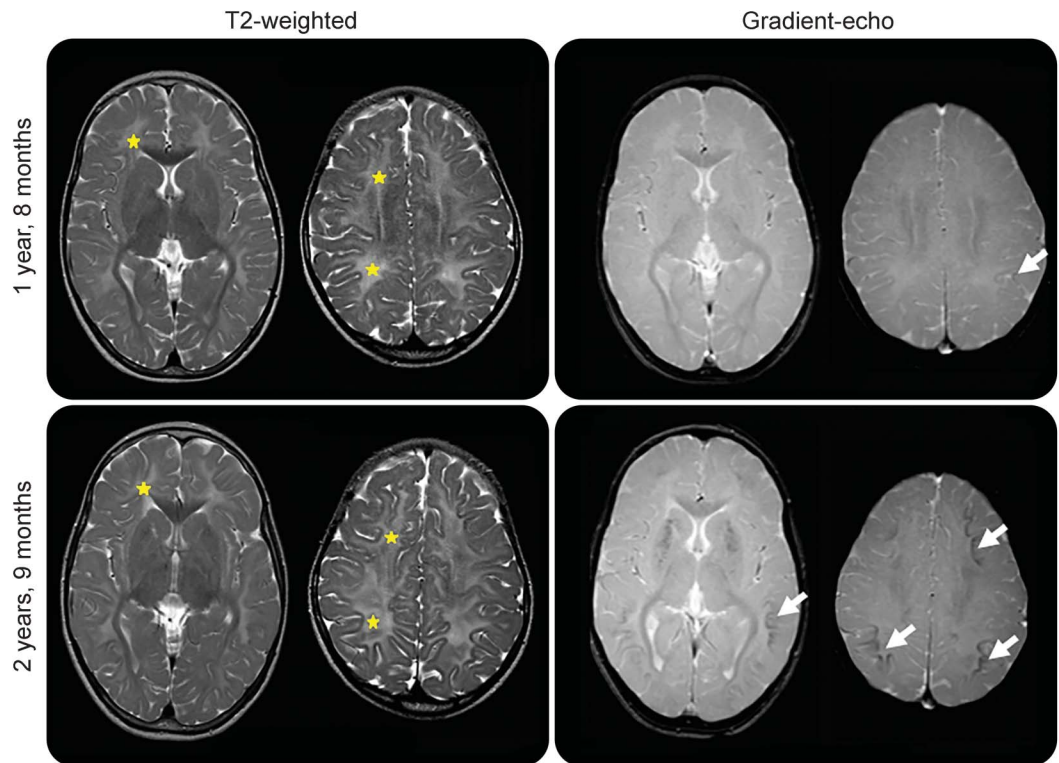


Teaching NeuroImages: White matter hypomyelination and progressive calcifications in cerebral folate deficiency

Joost Nicolai, MD, PhD
Marjan J.A. van Kempen,
PhD
Alida A. Postma, MD,
PhD

Correspondence to
Dr. Nicolai:
j.nicolai@mumc.nl

Figure MRI



MRI at age 1 year, 8 months (upper row) and at age 2 years, 9 months (lower row). White matter hyperintensity (*) at T2-weighted (left-sided) imaging is prominent but does not change evidently over time. An increase in the number of calcifications (arrows) at the gradient-echo images (right-sided) is mainly seen in the lentiform nuclei and peripheral white matter.

Cerebral folate transport deficiency is caused by homozygous or compound heterozygous mutations of the *FOLR1* gene.¹ Recently, we found a homozygous *FOLR1* mutation (NM_016725.2: c.562C>G p.[Leu188Val]) in a 2.5-year-old boy with febrile and nonfebrile status epilepticus, progressive ataxia, and progressive MRI abnormalities. Until the diagnosis was made, serial MRI had been performed (figure). CSF analysis (5-methyltetrahydrofolate <2 nmol/L, normal >40 nmol/L) and magnetic resonance spectroscopy showing a low choline peak validated the pathogenicity of our findings.²

Nonprogressive hypomyelination is considered part of *FOLR1*,^{1,2} although no author has published serial MRI. Our data show that cerebral folate transport deficiency must be considered in hypomyelination and progressive calcifications.

AUTHOR CONTRIBUTIONS

Joost Nicolai: study concept and design, acquisition of data. Marjan J.A. van Kempen: analysis and interpretation of genetic data. Alida A. Postma: analysis and interpretation of MRI and MRS data.

STUDY FUNDING

No targeted funding reported.

Download teaching slides:
Neurology.org

From the Departments of Neurology (J.N.) and Radiology (A.A.P.), Maastricht University Medical Center; and Department of Medical Genetics (M.J.A.v.K.), University Medical Center Utrecht, the Netherlands.

Go to Neurology.org for full disclosures. Funding information and disclosures deemed relevant by the authors, if any, are provided at the end of the article.

DISCLOSURE

The authors report no disclosures relevant to the manuscript. Go to Neurology.org for full disclosures.

REFERENCES

1. Grapp M, Just IA, Linnankivi T, et al. Molecular characterization of folate receptor 1 mutations delineates cerebral folate transport deficiency. *Brain* 2012;135:2022–2031.
2. Steinfeld R, Grapp M, Kraetzner R, et al. Folate receptor alpha defect causes cerebral folate transport deficiency: a treatable neurodegenerative disorder associated with disturbed myelin metabolism. *Am J Hum Genet* 2009;85:354–363.

Neurology®

Teaching *NeuroImages*: White matter hypomyelination and progressive calcifications in cerebral folate deficiency

Joost Nicolai, Marjan J.A. van Kempen and Alida A. Postma

Neurology 2016;87:e4-e5

DOI 10.1212/WNL.0000000000002805

This information is current as of July 4, 2016

Updated Information & Services	including high resolution figures, can be found at: http://www.neurology.org/content/87/1/e4.full.html
Supplementary Material	Supplementary material can be found at: http://www.neurology.org/content/suppl/2016/07/04/WNL.0000000000002805.DC1.html
References	This article cites 2 articles, 1 of which you can access for free at: http://www.neurology.org/content/87/1/e4.full.html##ref-list-1
Subspecialty Collections	This article, along with others on similar topics, appears in the following collection(s): All Epilepsy/Seizures http://www.neurology.org/cgi/collection/all_epilepsy_seizures All Pediatric http://www.neurology.org/cgi/collection/all_pediatric Gait disorders/ataxia http://www.neurology.org/cgi/collection/gait_disorders_ataxia Leukodystrophies http://www.neurology.org/cgi/collection/leukodystrophies MRI http://www.neurology.org/cgi/collection/mri
Permissions & Licensing	Information about reproducing this article in parts (figures, tables) or in its entirety can be found online at: http://www.neurology.org/misc/about.xhtml#permissions
Reprints	Information about ordering reprints can be found online: http://www.neurology.org/misc/addir.xhtml#reprintsus

Neurology® is the official journal of the American Academy of Neurology. Published continuously since 1951, it is now a weekly with 48 issues per year. Copyright © 2016 American Academy of Neurology. All rights reserved. Print ISSN: 0028-3878. Online ISSN: 1526-632X.

