

Acta Crystallographica Section E

Structure Reports

Online

ISSN 1600-5368

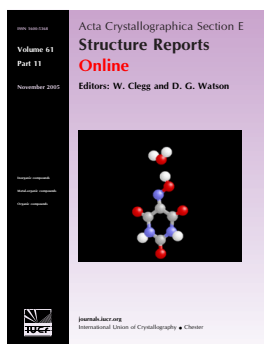
Editors: W. Clegg and D. G. Watson

Indole-3-thiouronium nitrate

Martin Lutz, Anthony L. Spek, Erwin P. L. van der Geer, Gerard van Koten and Robertus J. M. Klein Gebbink

Acta Cryst. (2008). E64, o194

This article is distributed under the terms of the Creative Commons Attribution Licence <http://creativecommons.org/licenses/by/2.0/uk/legalcode>, which permits unrestricted use, distribution, and reproduction in any medium, provided the original authors and source are cited.



Acta Crystallographica Section E: Structure Reports Online is the IUCr's highly popular open-access structural journal. It provides a simple and easily accessible publication mechanism for the growing number of inorganic, metal-organic and organic crystal structure determinations. The electronic submission, validation, refereeing and publication facilities of the journal ensure very rapid and high-quality publication, whilst key indicators and validation reports provide measures of structural reliability. In 2007, the journal published over 5000 structures. The average publication time is less than one month.

Crystallography Journals Online is available from journals.iucr.org

Indole-3-thiouronium nitrate

Martin Lutz,^a Anthony L. Spek,^{a*} Erwin P. L. van der Geer,^b Gerard van Koten^b and Robertus J. M. Klein Gebbink^b

^aCrystal and Structural Chemistry, Bijvoet Center for Biomolecular Research, Faculty of Science, Utrecht University, Padualaan 8, 3584 CH Utrecht, The Netherlands, and

^bChemical Biology & Organic Chemistry, Faculty of Science, Utrecht University, Padualaan 8, 3584 CH Utrecht, The Netherlands

Correspondence e-mail: a.l.spek@chem.uu.nl

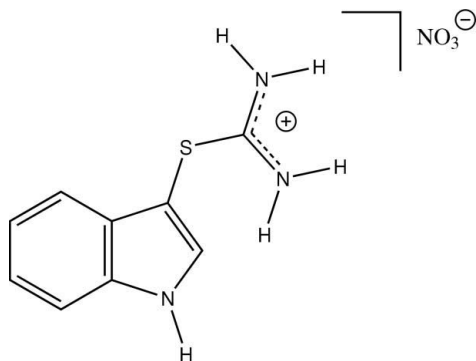
Received 29 November 2007; accepted 30 November 2007

Key indicators: single-crystal X-ray study; $T = 150$ K; mean $\sigma(\text{C}-\text{C}) = 0.002$ Å; R factor = 0.032; wR factor = 0.089; data-to-parameter ratio = 13.2.

In the title compound, $\text{C}_9\text{H}_{10}\text{N}_3\text{S}^+\cdot\text{NO}_3^-$, the indole ring system and the thiouronium group are nearly perpendicular, with a dihedral angle of $88.62(6)^\circ$. Hydrogen bonding generates two-dimensional networks which are linked to each other *via* π stacking interactions of the indole groups [average inter-planar ring–ring distance of $3.449(2)$ Å].

Related literature

For reviews of the supramolecular chemistry of thiourea derivatives, see: Takemoto (2005); Fitzmaurice *et al.* (2002); Schmidtchen & Berger (1997). For anion recognition of thiouronium salts, see: Esteban Gómez *et al.* (2005). For the synthesis of the title compound, see: Harris (1969); van der Geer *et al.* (2007). For thermal motion analysis, see: Schomaker & Trueblood (1998).



Experimental

Crystal data

$\text{C}_9\text{H}_{10}\text{N}_3\text{S}^+\cdot\text{NO}_3^-$
 $M_r = 254.27$

Orthorhombic, $Pbca$
 $a = 12.0524(2)$ Å

$b = 8.7395(1)$ Å
 $c = 21.1893(3)$ Å
 $V = 2231.91(5)$ Å³
 $Z = 8$

Mo $K\alpha$ radiation
 $\mu = 0.29$ mm⁻¹
 $T = 150(2)$ K
 $0.30 \times 0.24 \times 0.06$ mm

Data collection

Nonius KappaCCD diffractometer
Absorption correction: none
32180 measured reflections
2563 independent reflections
2120 reflections with $I > 2\sigma(I)$
 $R_{\text{int}} = 0.048$

Refinement

$R[F^2 > 2\sigma(F^2)] = 0.032$
 $wR(F^2) = 0.089$
 $S = 1.04$
2563 reflections
194 parameters
All H-atom parameters refined
 $\Delta\rho_{\text{max}} = 0.26$ e Å⁻³
 $\Delta\rho_{\text{min}} = -0.23$ e Å⁻³

Table 1

Hydrogen-bond geometry (Å, °).

$D-H\cdots A$	$D-H$	$H\cdots A$	$D\cdots A$	$D-H\cdots A$
$\text{N1}-\text{H1N}\cdots\text{O1}^{\text{i}}$	0.880 (18)	2.036 (19)	2.8290 (16)	149.4 (16)
$\text{N2}-\text{H2N}\cdots\text{O1}$	0.87 (2)	2.00 (2)	2.8679 (17)	174.2 (16)
$\text{N2}-\text{H3N}\cdots\text{O2}^{\text{ii}}$	0.90 (2)	2.108 (19)	2.9013 (16)	147.0 (16)
$\text{N3}-\text{H4N}\cdots\text{O2}$	0.90 (2)	2.00 (2)	2.8966 (19)	172.5 (19)
$\text{N3}-\text{H5N}\cdots\text{O3}^{\text{iii}}$	0.89 (2)	2.10 (2)	2.8817 (17)	145.0 (18)

Symmetry codes: (i) $-x+1, y-\frac{1}{2}, -z+\frac{1}{2}$; (ii) $x-\frac{1}{2}, y, -z+\frac{1}{2}$; (iii) $-x+2, y-\frac{1}{2}, -z+\frac{1}{2}$.

Data collection: *COLLECT* (Nonius, 1999); cell refinement: *HKL-2000* (Otwinowski & Minor, 1997); data reduction: *HKL-2000*; program(s) used to solve structure: *SHELXS97* (Sheldrick, 1997); program(s) used to refine structure: *SHELXL97* (Sheldrick, 1997); molecular graphics: *PLATON* (Spek, 2003); software used to prepare material for publication: *SHELXL97*.

This work was supported by the Council for Chemical Sciences of the Netherlands Organization for Scientific Research (CW-NWO).

Supplementary data and figures for this paper are available from the IUCr electronic archives (Reference: BT2657).

References

- Esteban Gómez, D., Fabbrizzi, L., Lichelli, M. & Monzani, E. (2005). *Org. Biomol. Chem.* **3**, 1495–1500.
- Fitzmaurice, R. J., Kyne, G. M., Douheret, D. & Kilburn, J. D. (2002). *J. Chem. Soc. Perkin Trans. 1*, pp. 841–864.
- Geer, E. P. L. van der, Li, Q., van Koten, G., Klein Gebbink, R. J. M. & Hessen, B. (2007). *Inorg. Chim. Acta*, doi:10.1016/j.ica.2007.09.021.
- Harris, R. L. N. (1969). *Tetrahedron Lett.* 4465–4466.
- Nonius (1999). *COLLECT*. Nonius BV, Delft, The Netherlands.
- Otwinowski, Z. & Minor, W. (1997). *Methods in Enzymology*, Vol. 276, *Macromolecular Crystallography*, Part A, edited by C. W. Carter Jr & R. M. Sweet, pp. 307–326. New York: Academic Press.
- Schmidtchen, F. P. & Berger, M. (1997). *Chem. Rev.* **97**, 1609–1646.
- Schomaker, V. & Trueblood, K. N. (1998). *Acta Cryst.* **B54**, 507–514.
- Sheldrick, G. M. (1997). *SHELXS97* and *SHELXL97*. University of Göttingen, Germany.
- Spek, A. L. (2003). *J. Appl. Cryst.* **36**, 7–13.
- Takemoto, Y. (2005). *Org. Biomol. Chem.* **3**, 4299–4306.

supplementary materials

Acta Cryst. (2008). E64, o194 [doi:10.1107/S1600536807064707]

Indole-3-thiuronium nitrate

M. Lutz, A. L. Spek, E. P. L. van der Geer, G. van Koten and R. J. M. Klein Gebbink

Comment

Thiourea derivatives have found widespread application in molecular recognition and supramolecular chemistry, largely due to their hydrogen-bonding complementarity with carboxylate groups (Takemoto, 2005; Fitzmaurice *et al.*, 2002; Schmidtchen & Berger, 1997). Of all thiourea derivatives, positively-charged thiuronium salts may be among the strongest anion receptors due to their increased acidity and the electrostatic stabilization of the anion-receptor complex (Esteban Gómez *et al.*, 2005). Recently, we have demonstrated that N-substituted indole-3-thiuronium salts are readily available from indole by nucleophilic substitution at the nitrogen atom followed by electrophilic aromatic substitution with thiourea (van der Geer *et al.*, 2007). In order to gain more insight into the hydrogen-bonding properties of indole-3-thiuronium salts, we have obtained the crystal structure of the title compound indole-3-thiuronium nitrate (I).

Bond distances and angles are as expected. The thiuronium group itself is planar, with the C—N bond lengths of 1.3076 (19) and 1.3162 (19) Å indicating a significant degree of double-bond character. Reflecting the resulting hindered rotation about the C—N bonds, solution-phase ¹H NMR shows separate signals for the thiuronium hydrogen atoms *cis* and *trans* to sulfur at room temperature. The least-squares plane of the thiuronium moiety forms an interplanar angle of 88.62 (6)° with respect to the least-squares plane of the indole group (Fig. 1).

A thermal motion analysis using the program THMA11 (Schomaker & Trueblood, 1998) results in a low weighted *R* value ($R = \text{SQRT}[(\sum (w\Delta U)^2) / (\sum (wU_{\text{obs}})^2)]$) of 0.084 indicating that the molecule behaves as a rigid body in the solid state.

All N—H groups act as hydrogen bond donors with the oxygen atoms of the nitrate anion as acceptors. O1 and O2 accept two hydrogen bonds, respectively, while O3 accepts only one. By this hydrogen bonding scheme a two-dimensional network in the a,b-plane is formed (Fig. 2).

Via π stacking interactions the indole ring systems form parallel, centrosymmetric dimers with an average ring···ring distance of 3.449 (2) Å (Fig. 3). These π stacking interactions occur between the two-dimensional hydrogen bonded layers.

Experimental

Indole-3-thiuronium iodide was prepared as described in literature (Harris, 1969). To a solution of indole-3-thiuronium iodide (0.100 g, 0.313 mmol) in EtOH (10 ml) was added AgNO₃ (0.0532 g, 0.313 mmol). The solution was stirred for 1 h, filtered to remove AgCl, and concentrated to approximately 3 ml. Ether (60 ml) was added, and after 48 h, white needles were collected by centrifugation, washed with ether, and dried *in vacuo*. Yield: 0.0738 g (0.290 mmol, 93%). Anal. Calcd for C₉H₁₀N₄O₃S: C, 42.51; H, 3.96; N, 22.03; S, 12.61. Found: C, 42.32; H, 4.08; N, 21.92; S, 12.73. The ¹H NMR spectrum was identical to that of indole-3-thiuronium iodide. FT—IR (ATR, ν , cm⁻¹): 3335, 3264, 3122, 1662, 1640, 1498, 1423, 1388, 1308, 1237, 1218, 1128, 1104, 1065, 1049, 1006, 816, 744. Crystals suitable for X-ray diffraction studies were obtained by ether vapor diffusion into an EtOH solution of the product.

Refinement

364 frames were collected as φ scans and 397 frames as ω scans with a rotation angle of 1° and an exposure time of 60 s, respectively.

Figures

- Fig. 1. The molecular structure of (I). Displacement ellipsoids are drawn at the 50% probability level and H atoms are shown as small spheres of arbitrary radii.
- Fig. 2. Hydrogen bonding scheme in compound (I). View along the crystallographic b axis. C—H hydrogen atoms are omitted for clarity. Symmetry operations i: $1 - x, 1/2 + y, 0.5 - z$; ii: $1/2 + x, y, 0.5 - z$; iii: $2 - x, 1/2 + y, 0.5 - z$.
- Fig. 3. π stacking interactions between the indole ring systems in (I). View along the crystallographic a axis. Symmetry operation i: $1 - x, 1 - y, -z$.

Indole-3-thiuronium nitrate

Crystal data

$C_9H_{10}N_3S^+ \cdot NO_3^-$	$F_{000} = 1056$
$M_r = 254.27$	$D_x = 1.513 \text{ Mg m}^{-3}$
Orthorhombic, $Pbca$	Mo $K\alpha$ radiation
Hall symbol: $-P\ 2ac\ 2ab$	$\lambda = 0.71073 \text{ \AA}$
$a = 12.0524 (2) \text{ \AA}$	Cell parameters from 44477 reflections
$b = 8.7395 (1) \text{ \AA}$	$\theta = 1.0\text{--}27.5^\circ$
$c = 21.1893 (3) \text{ \AA}$	$\mu = 0.29 \text{ mm}^{-1}$
$V = 2231.91 (5) \text{ \AA}^3$	$T = 150 (2) \text{ K}$
$Z = 8$	Plate, colourless
	$0.30 \times 0.24 \times 0.06 \text{ mm}$

Data collection

Nonius KappaCCD diffractometer	2120 reflections with $I > 2\sigma(I)$
Radiation source: rotating anode	$R_{\text{int}} = 0.048$
Monochromator: graphite	$\theta_{\text{max}} = 27.5^\circ$
$T = 150(2) \text{ K}$	$\theta_{\text{min}} = 1.9^\circ$
φ and ω scans	$h = -15 \rightarrow 15$
Absorption correction: none	$k = -11 \rightarrow 11$
32180 measured reflections	$l = -27 \rightarrow 27$
2563 independent reflections	

Refinement

Refinement on F^2	Secondary atom site location: difference Fourier map
Least-squares matrix: full	Hydrogen site location: difference Fourier map

$$R[F^2 > 2\sigma(F^2)] = 0.032$$

$$wR(F^2) = 0.089$$

$$S = 1.04$$

2563 reflections

194 parameters

Primary atom site location: structure-invariant direct methods

All H-atom parameters refined

$$w = 1/[\sigma^2(F_o^2) + (0.0479P)^2 + 0.7806P]$$

$$\text{where } P = (F_o^2 + 2F_c^2)/3$$

$$(\Delta/\sigma)_{\max} < 0.001$$

$$\Delta\rho_{\max} = 0.26 \text{ e } \text{\AA}^{-3}$$

$$\Delta\rho_{\min} = -0.23 \text{ e } \text{\AA}^{-3}$$

Extinction correction: none

Special details

Geometry. All e.s.d.'s (except the e.s.d. in the dihedral angle between two l.s. planes) are estimated using the full covariance matrix. The cell e.s.d.'s are taken into account individually in the estimation of e.s.d.'s in distances, angles and torsion angles; correlations between e.s.d.'s in cell parameters are only used when they are defined by crystal symmetry. An approximate (isotropic) treatment of cell e.s.d.'s is used for estimating e.s.d.'s involving l.s. planes.

Refinement. Refinement of F^2 against ALL reflections. The weighted R -factor wR and goodness of fit S are based on F^2 , conventional R -factors R are based on F , with F set to zero for negative F^2 . The threshold expression of $F^2 > 2\sigma(F^2)$ is used only for calculating R -factors(gt) etc. and is not relevant to the choice of reflections for refinement. R -factors based on F^2 are statistically about twice as large as those based on F , and R -factors based on ALL data will be even larger.

Fractional atomic coordinates and isotropic or equivalent isotropic displacement parameters (\AA^2)

	x	y	z	$U_{\text{iso}}^*/U_{\text{eq}}$
S1	0.69778 (3)	0.42394 (4)	0.119223 (18)	0.02623 (13)
N1	0.37464 (10)	0.47136 (15)	0.12180 (6)	0.0261 (3)
H1N	0.3086 (14)	0.448 (2)	0.1367 (9)	0.034 (5)*
N2	0.67908 (11)	0.63413 (15)	0.21093 (6)	0.0247 (3)
H2N	0.7073 (14)	0.693 (2)	0.2402 (9)	0.036 (5)*
H3N	0.6067 (17)	0.642 (2)	0.2016 (8)	0.037 (5)*
N3	0.85228 (11)	0.53570 (16)	0.19399 (7)	0.0281 (3)
H4N	0.8814 (17)	0.598 (2)	0.2236 (10)	0.049 (6)*
H5N	0.9029 (17)	0.481 (2)	0.1728 (10)	0.048 (6)*
C1	0.47062 (12)	0.40523 (18)	0.14151 (7)	0.0263 (3)
H1	0.4724 (13)	0.320 (2)	0.1715 (8)	0.030 (4)*
C2	0.55884 (11)	0.47801 (17)	0.11306 (6)	0.0224 (3)
C3	0.56104 (12)	0.70408 (16)	0.03254 (7)	0.0241 (3)
H3	0.6404 (14)	0.7099 (18)	0.0278 (7)	0.025 (4)*
C4	0.49126 (14)	0.80176 (18)	0.00043 (7)	0.0283 (3)
H4	0.5191 (15)	0.876 (2)	-0.0291 (9)	0.037 (5)*
C5	0.37534 (13)	0.79541 (18)	0.00913 (7)	0.0296 (3)
H5	0.3302 (14)	0.868 (2)	-0.0129 (9)	0.040 (5)*
C6	0.32737 (12)	0.68900 (18)	0.04876 (7)	0.0267 (3)
H6	0.2499 (15)	0.6822 (18)	0.0556 (7)	0.028 (4)*
C7	0.39845 (11)	0.58860 (16)	0.08036 (6)	0.0222 (3)
C8	0.51463 (11)	0.59550 (15)	0.07326 (6)	0.0203 (3)
C9	0.74591 (11)	0.54277 (16)	0.18022 (6)	0.0219 (3)
O1	0.78687 (8)	0.82212 (13)	0.30339 (5)	0.0302 (3)

supplementary materials

O2	0.95458 (8)	0.75180 (13)	0.27976 (5)	0.0308 (3)
O3	0.92651 (9)	0.94570 (13)	0.34188 (5)	0.0351 (3)
N4	0.88984 (10)	0.84099 (14)	0.30879 (6)	0.0240 (3)

Atomic displacement parameters (\AA^2)

	U^{11}	U^{22}	U^{33}	U^{12}	U^{13}	U^{23}
S1	0.0208 (2)	0.0269 (2)	0.0309 (2)	0.00496 (14)	-0.00216 (14)	-0.00352 (15)
N1	0.0191 (6)	0.0331 (7)	0.0262 (6)	-0.0050 (5)	0.0008 (5)	0.0028 (5)
N2	0.0174 (6)	0.0284 (7)	0.0284 (7)	0.0015 (5)	-0.0012 (5)	-0.0036 (6)
N3	0.0179 (6)	0.0306 (7)	0.0357 (7)	0.0028 (5)	-0.0010 (5)	-0.0007 (6)
C1	0.0244 (7)	0.0292 (8)	0.0253 (7)	-0.0031 (6)	-0.0015 (6)	0.0024 (6)
C2	0.0186 (6)	0.0248 (7)	0.0239 (7)	0.0001 (5)	-0.0017 (5)	-0.0015 (6)
C3	0.0212 (7)	0.0245 (7)	0.0265 (7)	-0.0034 (6)	0.0018 (6)	-0.0024 (6)
C4	0.0323 (8)	0.0253 (8)	0.0273 (8)	-0.0035 (6)	-0.0004 (6)	0.0022 (6)
C5	0.0311 (8)	0.0286 (8)	0.0291 (8)	0.0039 (6)	-0.0066 (6)	-0.0009 (6)
C6	0.0190 (7)	0.0326 (8)	0.0287 (8)	0.0008 (6)	-0.0038 (6)	-0.0048 (6)
C7	0.0198 (7)	0.0260 (7)	0.0207 (6)	-0.0029 (6)	-0.0005 (5)	-0.0030 (5)
C8	0.0178 (6)	0.0222 (7)	0.0209 (7)	-0.0010 (5)	-0.0001 (5)	-0.0029 (5)
C9	0.0175 (6)	0.0228 (7)	0.0255 (7)	-0.0004 (5)	-0.0009 (5)	0.0059 (6)
O1	0.0145 (5)	0.0416 (6)	0.0345 (6)	0.0011 (4)	0.0000 (4)	-0.0075 (5)
O2	0.0186 (5)	0.0431 (7)	0.0308 (6)	0.0075 (5)	0.0033 (4)	0.0002 (5)
O3	0.0293 (6)	0.0403 (7)	0.0358 (6)	-0.0102 (5)	0.0002 (5)	-0.0051 (5)
N4	0.0177 (6)	0.0309 (7)	0.0235 (6)	0.0003 (5)	0.0013 (5)	0.0042 (5)

Geometric parameters (\AA , $^\circ$)

S1—C2	1.7448 (14)	C3—C4	1.378 (2)
S1—C9	1.7566 (15)	C3—C8	1.399 (2)
N1—C1	1.359 (2)	C3—H3	0.963 (17)
N1—C7	1.3795 (19)	C4—C5	1.410 (2)
N1—H1N	0.880 (18)	C4—H4	0.963 (18)
N2—C9	1.3076 (19)	C5—C6	1.380 (2)
N2—H2N	0.87 (2)	C5—H5	0.955 (19)
N2—H3N	0.90 (2)	C6—C7	1.397 (2)
N3—C9	1.3162 (19)	C6—H6	0.946 (18)
N3—H4N	0.90 (2)	C7—C8	1.4096 (19)
N3—H5N	0.89 (2)	O1—N4	1.2572 (15)
C1—C2	1.378 (2)	O2—N4	1.2628 (16)
C1—H1	0.979 (18)	O3—N4	1.2348 (16)
C2—C8	1.432 (2)		
C2—S1—C9	102.23 (7)	C3—C4—H4	121.7 (11)
C1—N1—C7	109.54 (12)	C5—C4—H4	117.2 (11)
C1—N1—H1N	124.0 (12)	C6—C5—C4	121.41 (14)
C7—N1—H1N	126.1 (12)	C6—C5—H5	120.3 (11)
C9—N2—H2N	118.1 (11)	C4—C5—H5	118.3 (11)
C9—N2—H3N	122.4 (11)	C5—C6—C7	117.25 (14)
H2N—N2—H3N	119.5 (16)	C5—C6—H6	123.3 (10)

C9—N3—H4N	120.3 (13)	C7—C6—H6	119.5 (10)
C9—N3—H5N	125.3 (13)	N1—C7—C6	130.09 (13)
H4N—N3—H5N	113.9 (18)	N1—C7—C8	107.84 (12)
N1—C1—C2	109.03 (13)	C6—C7—C8	122.07 (13)
N1—C1—H1	122.8 (10)	C3—C8—C7	119.47 (13)
C2—C1—H1	128.2 (10)	C3—C8—C2	134.50 (13)
C1—C2—C8	107.55 (12)	C7—C8—C2	106.03 (12)
C1—C2—S1	125.65 (12)	N2—C9—N3	121.22 (14)
C8—C2—S1	126.55 (11)	N2—C9—S1	121.59 (11)
C4—C3—C8	118.73 (14)	N3—C9—S1	117.19 (11)
C4—C3—H3	121.4 (10)	O3—N4—O1	120.15 (12)
C8—C3—H3	119.8 (10)	O3—N4—O2	120.86 (12)
C3—C4—C5	121.04 (15)	O1—N4—O2	118.99 (12)
C7—N1—C1—C2	-0.19 (17)	C4—C3—C8—C7	0.1 (2)
N1—C1—C2—C8	-0.26 (17)	C4—C3—C8—C2	179.62 (15)
N1—C1—C2—S1	-174.86 (11)	N1—C7—C8—C3	178.96 (13)
C9—S1—C2—C1	-95.95 (14)	C6—C7—C8—C3	-1.2 (2)
C9—S1—C2—C8	90.45 (13)	N1—C7—C8—C2	-0.71 (15)
C8—C3—C4—C5	1.3 (2)	C6—C7—C8—C2	179.17 (13)
C3—C4—C5—C6	-1.7 (2)	C1—C2—C8—C3	-179.01 (16)
C4—C5—C6—C7	0.6 (2)	S1—C2—C8—C3	-4.5 (2)
C1—N1—C7—C6	-179.29 (15)	C1—C2—C8—C7	0.60 (16)
C1—N1—C7—C8	0.58 (16)	S1—C2—C8—C7	175.14 (11)
C5—C6—C7—N1	-179.32 (14)	C2—S1—C9—N2	4.19 (14)
C5—C6—C7—C8	0.8 (2)	C2—S1—C9—N3	-176.06 (11)

Hydrogen-bond geometry (\AA , $^\circ$)

$D-H\cdots A$	$D-H$	$H\cdots A$	$D\cdots A$	$D-H\cdots A$
N1—H1N \cdots O1 ⁱ	0.880 (18)	2.036 (19)	2.8290 (16)	149.4 (16)
N2—H2N \cdots O1	0.87 (2)	2.00 (2)	2.8679 (17)	174.2 (16)
N2—H3N \cdots O2 ⁱⁱ	0.90 (2)	2.108 (19)	2.9013 (16)	147.0 (16)
N3—H4N \cdots O2	0.90 (2)	2.00 (2)	2.8966 (19)	172.5 (19)
N3—H5N \cdots O3 ⁱⁱⁱ	0.89 (2)	2.10 (2)	2.8817 (17)	145.0 (18)

Symmetry codes: (i) $-x+1, y-1/2, -z+1/2$; (ii) $x-1/2, y, -z+1/2$; (iii) $-x+2, y-1/2, -z+1/2$.

Fig. 1

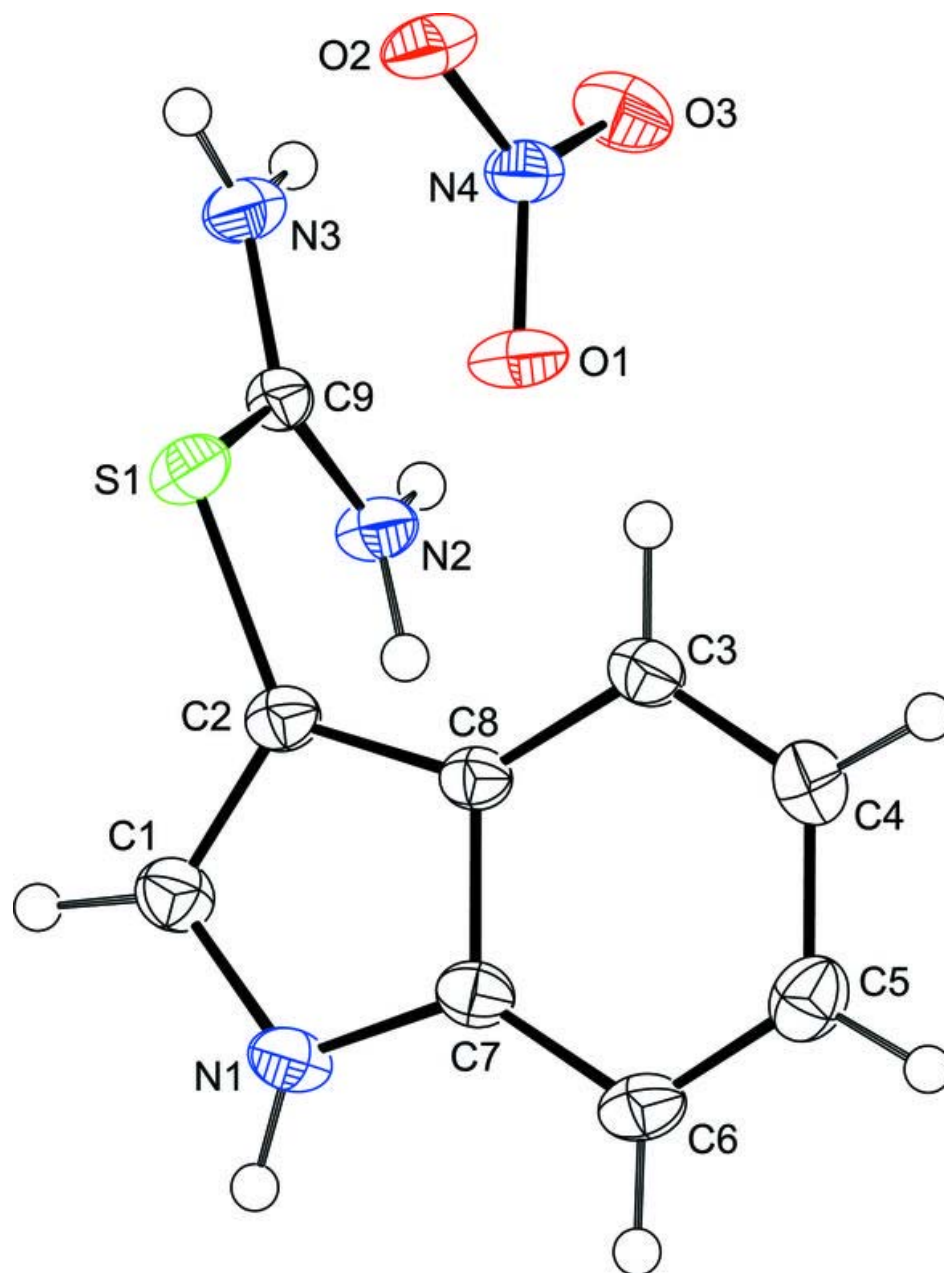


Fig. 2

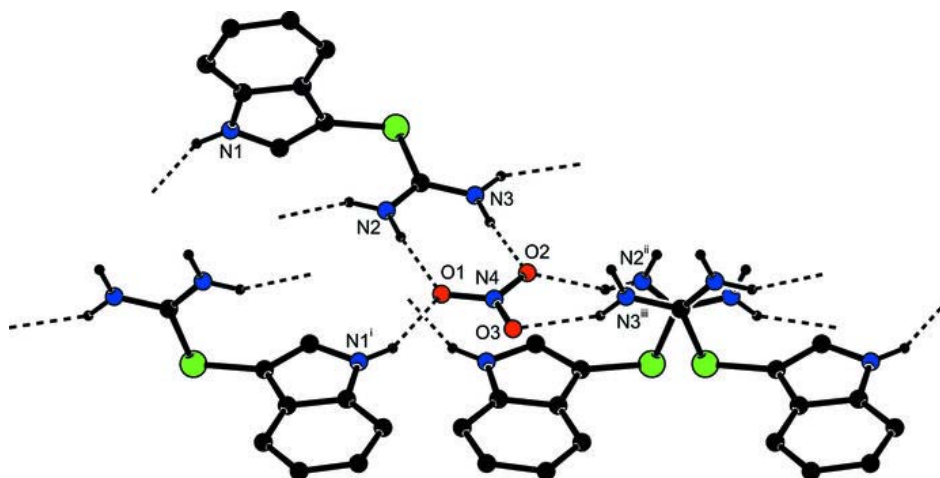


Fig. 3

