

EDITORIAL

Open Access

Lung particle overload: old school –new insights?

Paul Borm^{1*}, Flemming R Cassee^{2,3} and Günter Oberdörster⁴



The late Paul E. Morrow

It is more than 25 years ago that the late Paul Morrow published his paper entitled “Possible mechanisms to explain dust overloading of the lungs” [1]. The paper had a major impact on our thinking on the retained dose and clearance upon inhalation of respirable dust. We have to realize that in those years’ asbestos, man-made mineral fibres and coal-mine dust induced pulmonary diseases dominated the publications. Particle and Fibre Toxicology was not yet started, and fundamental discussions on general particle paradigms were disseminated through

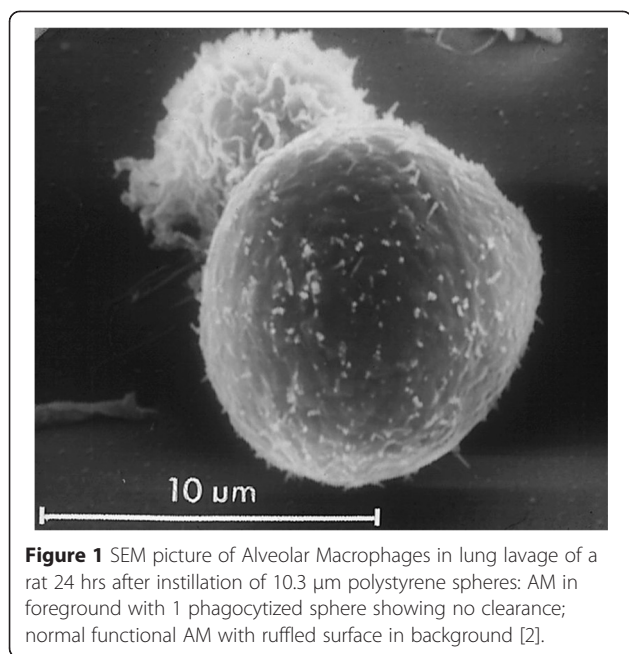
Inhalation Toxicology and general Toxicology journals, such as the journal chosen by Paul Morrow, *Fundamental and Applied Toxicology*. Ambient fine particles and nanoparticles were not yet explored by particle toxicologists, [which is hard to imagine] in stark contrast to these days, where 90% of papers in *Particle and Fibre Toxicology* focus on nanomaterials, and fundamental mechanisms of particle induced cell damage.

Morrow [1] proposed the lung particle overload hypothesis based on a careful analysis of many publications on effects and disposition of particles delivered to the lungs of rodents. At the core of the particle overload hypothesis is the question about the relevancy for humans of both non-neoplastic and neoplastic effects observed specifically in rats exposed chronically to extremely high concentrations of poorly soluble particles of low acute toxicity (PSP). Morrow proposed that a continuously increasing prolongation of particle lung clearance of PSP occurs when the retained lung burden exceeds a certain threshold; he identified that this effect on particle clearance is due to an impairment of the alveolar macrophage (AM) clearance function and concluded from his analysis of the data that the impaired clearance correlates with the phagocytized volumetric loading of AM. More specifically, he suggested that the impairment starts when the average composite phagocytized volume exceeds 6% of the normal AM volume, and that complete cessation of clearance occurs when this phagocytized volume reaches 60% of the normal AM volume. Morrow proposed to test this hypothesis by administering tracer doses (below overload) of radioactively-labelled either 3 μm or 10 μm polystyrene spheres to rats, the volume of one 10 μm sphere (600 μm^3) being equivalent to ~60% of a rat’s AM volume. The clearance of both particle sizes via *in vivo* counting of chest radioactivity over 6 months in a collimated detector system confirmed that the 10 μm particles were not cleared, whereas the 3 μm particles cleared with a rat specific normal retention $T_{1/2}$ of 80 days [2]. Indeed, examination of lung lavage samples showed that AM had readily phagocytized the large spheres so that one sphere completely filled one AM (Figure 1).

* Correspondence: paul.borm@zuyd.nl

¹Zuyd Hogeschool, Department of Life Sciences & Health, PO Box 550, 6400, AN Heerlen, The Netherlands

Full list of author information is available at the end of the article



Morrow's pioneering studies prompted additional research into the fate of particles in the lung under normal and overload conditions; for example, an increasing interstitial access of particles associated with overload [3]; or, the finding that a decrease in the alveolar inflammatory response despite increasing doses of ultrafine TiO_2 – as indicated by the number of inflammatory neutrophils in lung lavage samples – may be explained by a shift of the inflammation from the alveolar space to the interstitium when more than 50% of the lung deposited dose has translocated to the pulmonary interstitium [4]. Could such interstitial shift of inflammation explain results in coal miners where a large portion of very high lung burdens – consistent with overload – translocated to the interstitium so that no increase of neutrophils in lung lavage is seen. And, may this primate-specific interstitial particle sequestration compartment [5] explain that coal miners – in contrast to rats – do not have an increased risk of lung cancer under lung overload conditions?

Morrow [1] also recognized that other metrics be considered in the ongoing discussion about the “overload” phenomenon; in particular he co-authored a paper indicating that severely retarded AM clearance of test particles following sub-chronic inhalation of ultrafine TiO_2 in rats occurred at AM phagocytized doses far below the 6% AM threshold volume, but that the phagocytized particle surface area correlated very well with the observed clearance impairment of both the ultrafine and fine TiO_2 [6]. Even taking into account the void spaces between the agglomerated phagocytized particles in AM did not improve the correlation between retained volumetric lung burden of TiO_2 and impaired particle clearance or

pulmonary inflammation, in contrast to the adequate correlation with retained TiO_2 surface area. Since then, the importance of the particle surface area dose-metric for particle-induced pulmonary inflammatory effects has been repeatedly shown by many investigators [7-11].

The fascination with Morrow's theory on particle overload continues, particle overload has been at the centre of debate for over 25 years, even at times when we were discussing particles with different sizes, at much lower concentrations and exposure conditions. The overload concept has upstaged debates at many public, scientific, regulatory and personal meetings. In 1998, an international workshop by ILSI in Washington set the stage for a larger debate with two main objectives [12]: (1) provide guidance for risk assessment on the interpretation of neoplastic and non-neoplastic responses of the rat lung to PSPs; and (2) to identify important data gaps in our understanding of the lung responses of rats and other species to PSPs. The consensus of the workshop participants was:

“Because it is still not known with certainty whether high lung burdens of PSPs can lead to lung cancer in humans via mechanisms similar to those of the rat, in the absence of mechanistic data to the contrary it must be assumed that the rat model can identify potential carcinogenic hazards to humans. Since the apparent responsiveness of the rat model at overload is dependent on coexistent chronic active inflammation and cell proliferation, at lower lung doses where chronic active inflammation and cell proliferation are not present, no lung cancer hazard is anticipated”.

In 2000, a workshop on fibre and particle toxicology was organized by the German Permanent Senate Commission for the Investigation of Health Hazards of Chemical Compounds in the Work Area (MAK Commission) in Munich to revisit similar topics with an update on emerging biological mechanisms such as particle induced pulmonary inflammatory response, anti-oxidant protection and secondary genotoxicity of particles due to inflammation under overload conditions.

The workshop participants concluded [13] that “the lung tumors observed in chronic rat inhalation studies with high dose PSPs ... are due to a secondary genotoxicity”, which in rats “operates only at high doses and high levels of neutrophils” and for “PSP, pathology in rodents indicates that if there is no inflammation there is no fibrosis, and if there is no fibrosis, there is no cancer”. The participants also noted that surface area of PSPs is an important dose-metric and recommended that particle surface area should be measured, along with number, mass and diameter. Concerning species differences regarding DNA repair and other defence mechanisms, the participants agreed “that at present there is no better

animal model than the rat for assessing lung cancer risk for PSP. The rat appears to be the only laboratory animal species that develops lung tumours in response to PSP and, therefore, is the most sensitive species for this endpoint". Still, the participants recognized that "It is unknown whether in humans secondary PSP-induced DNA damage could occur at extremely high retained particle levels in the lung. However, this appears unlikely, since even among coal workers who have been chronically exposed to very high dust levels, rates of lung tumors are not significantly increased".

In the late nineties, the Medical Institute for Environmental Hygiene (MIU) in Düsseldorf, completed a lifetime animal study with 19 different particles at different doses started by the late Friedrich Pott and co-workers [10,14,15]. In this study a series of particles were administered at high doses to rats by intratracheal instillation, to apply and prove the Morrow-volumetric overload hypothesis and at the same time determine induction of lung cancer by these particles. The work has initiated a lot of discussion and debate with basically two views: people that supported the "surface" hypothesis, while the others considered the concept of "volumetric" overload as the prime mechanism leading to tumours. More important however, was the split in opinions regarding the relevance of the theory to humans, if so how extrapolation should occur. Both the ILSI workshop in 1998 [12] and MAK workshop in 2000 [13] were not conclusive on this topic, since data to support it were missing.

Today we still see that the above issues are not entirely solved and that the debate is ongoing. We have invited two groups, that is Jürgen Pauluhn (formerly Bayer) and a group of authors led by Peter Morfeld (Evonik, Germany) to review the literature and to summarize the current views on particle lung overload and the relevance to predict the carcinogenic potency of PSPs. Morfeld and colleagues [16] argue that the host defence mechanisms and particle retention metrics in rats are entirely different than those in humans (or even other rodents). However, this is what the German MAK committee is adapting and the result is a rather precautionary exposure limit value [17]. Morfeld et al. contend that the classification depends highly on debatable assumptions and calculations on lung particle overload by software which is not freely available as it is for the Multiple Path Particle Dosimetry model. They argue that the total surface area of particles retained in the lung is the more appropriate metric for the inflammation and impaired clearance function. On the other hand, Pauluhn in his paper [18] argues that the existing information on mechanistic information, primarily lung inflammation and particle retention kinetics, is by and large driven by the volumetric particle dose and the AM pool, because this determines the percentage of macrophage volume that is displaced by particles leading to

overload and associated impaired clearance function. However, Pauluhn also acknowledges that surface area and in particular surface chemistry and associated potential for particle dissolution play a role in the development of host responses so that volume may not be the only critical parameter that determines the likelihood of a carcinogenic potential of PSPs.

Both Pauluhn [18] and Morfeld *et al.* [16] cite the papers by Cullen *et al.* [19] and Tran *et al.* [7] describing effects, deposition and retention kinetics and lung lavage neutrophil data of inhaled BaSO₄ and TiO₂ particles in rats, and came to divergent conclusions. Morfeld *et al.* [16] concurred with the conclusion of the authors that particle surface area rather than volume or mass was the appropriate metric to confirm that both particle types are PSP particles; whereas Pauluhn [18] pointed to an enhanced dissolution of BaSO₄ when fitting the data of the accumulation phase. Indeed a recent study [20] in rats with inhalation and intratracheal instillation of nano-sized BaSO₄ reported that 95% of the retained lung burden of BaSO₄ was cleared within 34 days post-inhalation and that the retention half-time of instilled BaSO₄ was less than 10 days. This is significantly faster than a normal T_{1/2} of 60–80 days for both modes of BaSO₄ delivery to the lung. Is this consistent with a PSP (poorly soluble) category for BaSO₄? Whatever the final judgement on the studies by Cullen *et al.* [19] and Tran *et al.* [7] is, these studies provide an important contribution to the overload discussion in terms of not only viewing accumulation and retention kinetics of the inhaled particles but also determining *in vivo* particle dissolution rates. The result of Konduru *et al.* [20] reflects either an efficient rapid translocation of the 20 nm BaSO₄ particles, or a high dissolution rate. Clearly, studies aimed at generating new insights regarding the fate of phagocytized particles in AM of rodents and primates are required to advance our thinking about the 25-year old phenomenon of lung particle overload.

After reading both invited reviews, some conclusions and questions can be summarized as:

- Before lung particle overload was brought to the attention of the scientific community by the late professor Morrow, Davies [21] had concluded from studying dust accumulation and retention in the lungs of coal miners that an observed greatly enhanced rate of accumulation "must be associated with an increased likelihood of a particle being retained in the lungs after it has been deposited upon the surface of an alveolus".
- Impaired alveolar macrophage clearance function for particles remains the hallmark of lung particle overload. The originally proposed mechanism for such impaired clearance in terms of volumetric loading of AM still seems to hold for larger

particles; however, the particle surface area dose-metric is a valid alternative, especially when nanoparticles are involved, knowing that surface properties and chemistry can make a significant difference in terms of particle-cell interaction which is not associated with simply the volume of the particle in question [22–25].

- The dissolution rate of the phagocytized particles inside a phagolysosome is an important determinant of the particulate state; regardless as to whether the volume or surface area is considered as dose-metric. Also, significant differences between rodents and primates regarding interstitial particle sequestration and associated retention kinetics need to be considered.
- Regarding extrapolation modelling of results from rat overload studies to human exposure conditions - some of the open questions to be discussed are: should the normalization of retained lung burdens preferably be based on the denominator alveolar surface area, lung weight, or AM number?
- Which value for alveolar surface area should be used: Surface area at total lung capacity (TLC), at functional residual capacity (FRC)? Obviously, normal breathing occurs at FRC + tidal volume (TV), so the average surface area for particle deposition to consider during breathing is FRC + ½ TV.
- Is dosimetric extrapolation modelling of results from long term particle inhalation studies in rats meaningful? A fundamental question is, which retention $T_{1/2}$ for humans should be used? Options based on Gregoratto (2010) might be: clearance from the alveolar space to the mucociliary escalator ($T_{1/2} = 400$ days, for 60% of alveolar deposit), or clearance from the alveolar space to the interstitium ($T_{1/2} = 700$ days, for 40% of alveolar deposits), or combined clearance from the alveolar space to the mucociliary escalator and interstitium (250 days, for 100% of alveolar deposits) as sequestration compartment
- What is the biologically effective/available surface area? BET surface area is generally used as a surrogate based on studies showing good correlations with responses, however, are there better alternatives? Might the specific surface reactivity be a more relevant metric, expressed as response per unit particle surface area, and useful for purposes of hazard ranking (Rushton et al. [26]).
- Is there evidence for particle overload associated impaired clearance in humans? There seems to be conditional evidence in coal miners as indicated by Davies [21] and based on calculations by Stöber et al. [27] using autopsied lung samples from miners and from actual magneto-pneumographic

measurements of dust retention in coal miners' lungs by Freedman and Robinson [28].

In a time when kinetics and overload belong to old school descriptive toxicology, we felt it is our obligation to bring the discussion back to the scientific forum and out of the risk assessment arena. In addition, for our younger readers who are mainly focused on molecular mechanistic endpoints within specific area's such as the inflammasome, DNA repair or oncogene-regulation, this may also be a message that findings need to be viewed and interpreted in a translational context. Driven by the new events such as SCOEL using the overload approach using a volumetric approach and defining elimination kinetics to half-times exceeding 60-days, and AM pool size as the key elements] for setting occupational exposure levels in the EU, the editor of PFT decided to invite key players in the field to give their opinion on the most important events of the past 10–15 years, and give their opinion on dose-metrics and rat-human extrapolation. Both the submission and reviewing process showed how topical the overload issue still is, including the impact and debate on its use for risk assessment. At the same time it is interesting to note that some toxicologists don't even realize what the debate is all about. We hope that with this mini-series of 2 papers [16,18] we have positioned the debate in the current time frame. We believe this enables the arguments to be separated from the political arena, allowing a renewed objective debate. This procedure goes back to the roots and mission of the founding of our open-access journal, dedicated to general aspects of particle and fibre toxicology [29].

Author details

¹Zuyd Hogeschool, Department of Life Sciences & Health, PO Box 550, 6400, AN Heerlen, The Netherlands. ²National Institute for Public Health and the Environment (RIVM), PO Box 1, 3720, BA Bilthoven, The Netherlands. ³Institute of Risk Assessment Sciences, Utrecht University, PO Box 80.163, 3508, TD Utrecht, The Netherlands. ⁴Professor Emeritus of Toxicology, University of Rochester, Department of Environmental Medicine, Rochester, NY 14642, USA.

Received: 3 March 2015 Accepted: 9 March 2015

Published online: 26 April 2015

References

1. Morrow PE. Possible mechanisms to explain dust overloading of the lungs. *Fundam Appl Toxicol.* 1988;10(3):369–84.
2. Oberdörster G, Ferin J, Morrow PE. Volumetric loading of alveolar macrophages (AM): A possible basis for diminished AM-mediated particle clearance. *Exp Lung Res.* 1992;18:87–104.
3. Ferin J, Oberdörster G, Soderholm SC, Gelein R. The rate of dose delivery affects pulmonary interstitialization of particles in rats. *Ann Occup Hyg.* 1994;38 Suppl 1:289–93.
4. Oberdörster G, Ferin J, Gelein R, Soderholm SC, Finkelstein J. Role of the alveolar macrophage in lung injury: Studies with ultrafine particles. *Environ Health Perspect.* 1992;97:193–7.
5. Gregoratto D, Bailey MR, Marsh JW. Modelling particle retention in the alveolar-interstitial region of the human lungs. *J Radiol Prot.* 2010;30(3):491–512.

6. Oberdörster G, Ferin J, Soderholm SC, Gelein R, Cox C, Baggs R, et al. "Increased pulmonary toxicity of inhaled ultrafine particles: Due to lung overload alone?". *Ann Occup Hyg.* 1994;38 Suppl 1:295–302.
7. Tran CL, Buchanan D, Cullen RT, Searl A, Jones AD, Donaldson K. Inhalation of poorly soluble particles. II. Influence of particle surface area on inflammation and clearance. *Inhal Toxicol.* 2000;12:1113–26.
8. Donaldson K, Brown D, Clouter A, Duffin R, MacNee W, Renwick L, et al. The pulmonary toxicology of ultrafine particles. *J Aerosol Med - Deposition Clearance & Effects in the Lung.* 2002;15(2):213–20.
9. Elder A, Gelein R, Finkelstein JN, Driscoll KE, Harkema J, Oberdörster G. Effects of subchronically inhaled carbon black in three species. I. Retention Kinetics, lung inflammation, and histopathology. *Toxicol Sci.* 2005;88(2):614–29.
10. Borm PJA, Schins RPF, Albrecht C. Inhaled particles and lung cancer - A review. part B- paradigms and risk assessment. *Int J Cancer.* 2004;110:3–14.
11. Duffin R, Tran L, Brown D, Stone V, Donaldson K. Proinflammogenic Effects of Low-Toxicity and Metal Nanoparticles In Vivo and In Vitro: Highlighting the role of particle surface area and surface reactivity. *Inhal Toxicol.* 2007;19:849–56.
12. Risk Science Institute Workshop Participants ILSI. The relevance of the rat lung response to particle overload for human risk assessment: A workshop consensus report. *Inhal Toxicol.* 2000;12:1–17.
13. Greim H, Borm P, Schins R, Donaldson K, Driscoll K, Hartwig A, et al. Toxicity of fibers and particles - report of the workshop held in Munich, Germany, 26–27 October 2000. *Inhal Toxicol.* 2001;13:737–54.
14. Morfeld P, Albrecht C, Drommer W, Borm P. Dose–response and threshold analysis of tumour prevalence after intratracheal instillation of six types of low and high surface area particles in a chronic rat experiment. *Inhal Toxicol.* 2006;18:215–25.
15. Mohr U, Ernst H, Roller M, Pott F. Pulmonary tumor types induced in Wistar rats of the so-called "19-dust study". *Exp Toxicol Pathol.* 2006;58(1):13–20.
16. Morfeld P, Bruch J, Ngiewich Y, Chaudhuri I, Muranko H, Myerson R, et al. Translation toxicology in setting occupational exposure limits for dusts and hazard classification- a critical evaluation of a recent approach to translate dust overload findings from rats to humans. *Particle and Fibre Toxicology* 2015.
17. MAK. The MAK-Collection Part I, MAK Value Documentations, DFG, Wiley-VCH Verlag GmbH & Co. 2014.
18. Pauluhn. PFT paper published dec 2014. Derivation of occupational exposure levels (OELs) of Low-toxicity isometric biopersistent particles: how can the kinetic lung overload paradigm be used for improved inhalation toxicity study design and OEL-derivation? *Part Fibre Toxicol.* 2014;11:72.doi:10.1186/s12989-014-0072-2.
19. Cullen RT, Tran CL, Buchanan D, Davis JMG, Searl A, Jones AD. Inhalation of poorly soluble particles. I. Differences in inflammatory response and clearance during exposure. *Inhal Toxicol.* 2000;12:1089–111.
20. Konduru N, Keller J, Ma-Hock L, Gröters S, Landsiedel R, et al. Biokinetics and effects of barium sulfate nanoparticles. *Part Fibre Toxicol.* 2014;11:55.
21. Davies CN. The Handling of Particles by the Human Lungs. *Brit Med Bull.* 1963;19(1):49–52.
22. Nel, A. E., L. Mädler, D. Velegol, T. Xuia, E. M. V. Hoek, P. Somasundaran, F. Klaessig, V. Castranova and M. Thompson (2009). "Understanding biophysicochemical interactions at the nano-bio interface." *Nature Materials* 8(July,2009): 543-557.
23. Warheit DB, Webb TR, Reed KL, Frerichs S, Sayes CM. Pulmonary toxicity study in rats with three forms of ultrafine-TiO₂ particles: differential responses related to surface properties. *Toxicology.* 2007;230(1):90–104.
24. Dutta D, Sundaram SK, Teeguarden JG, Riley BJ, Fifield LS, Jacobs JM, et al. Adsorbed proteins influence the biological activity and molecular targeting of nanomaterials. *Toxicol Sci.* 2007;100(1):303–15.
25. Haniu H, Saito N, Matsuda Y, Kim Y-A, Park KC, Tsukahara T, et al. Effect of dispersants of multi-walled carbon nanotubes on cellular uptake and biological responses. *Intl J Nanomedicine.* 2011;6:3295–330.
26. Rushton EK, Jiang J, Leonard SS, Eberly S, Castranova V, Biswas P, et al. Concept of assessing nanoparticle hazards considering nanoparticle dosemetric and chemical/biological response-metrics. *JTEH Part A.* 2010;73:445–61.
27. Stöber W, Einbrodt HJ, Klosterkötter W. Quantitative studies of dust retention in animal and human lungs after chronic inhalation. In: Davies CN, editor. *Inhaled Particles and Vapours II* (Proceedings of an International Symposium organized by the British Occupational Hygiene Society, Cambridge, 28 Sept - 1 Oct 1965). Cambridge: Pergamon Press, Symposium Publications Division; 1965. p. 409–18.
28. Freedman AP, Robinson SE. In: Frantz RL, Ramani RV, editors. *Respirable dust in the mineral industries: health effects, characterization, and control.* University Park, PA: The Pennsylvania State University; 1988. p. 181–6.
29. Donaldson and Borm. *Particle and Fibre Toxicology*, a new journal to meet a real need. *Part Fibre Toxicol.* 2004;1:1. doi:10.1186/1743-8977-1-1.

Submit your next manuscript to BioMed Central and take full advantage of:

- Convenient online submission
- Thorough peer review
- No space constraints or color figure charges
- Immediate publication on acceptance
- Inclusion in PubMed, CAS, Scopus and Google Scholar
- Research which is freely available for redistribution

Submit your manuscript at
www.biomedcentral.com/submit

