

REVIEW

Open Access

Usefulness of bovine and porcine IVM/IVF models for reproductive toxicology

Regiane R Santos^{1,2*}, Eric J Schoevers³ and Bernard AJ Roelen^{3,4}

Abstract

Women presenting fertility problems are often helped by Assisted Reproductive Techniques (ART), such as *in vitro* fertilization (IVF) programs. However, in many cases the etiology of the in/subfertility remains unknown even after treatment. Although several aspects should be considered when assisting a woman with problems to conceive, a survey on the patients' exposure to contaminants would help to understand the cause of the fertility problem, as well as to follow the patient properly during IVF. Daily exposure to toxic compounds, mainly environmental and dietary ones, may result in reproductive impairment. For instance, because affects oocyte developmental competence. Many of these compounds, natural or synthetic, are endocrine disruptors or endocrine active substances that may impair reproduction. To understand the risks and the mechanism of action of such chemicals in human cells, the use of proper *in vitro* models is essential. The present review proposes the bovine and porcine models to evaluate toxic compounds on oocyte maturation, fertilization and embryo production *in vitro*. Moreover, we discuss here the species-specific differences when mice, bovine and porcine are used as models for human.

Keywords: Female fertility, Toxicology, Bovine, Porcine, Model

Background

The adverse effects caused by various natural and synthetic chemicals include impairment of both the male and the female reproductive system. Many of these effects are related to temporary or permanent actions on the endocrine system. When the mechanisms of action of these chemicals are endocrine-mediated, they may induce non-heritable defects culminating with sub/infertility, growth retardation, endocrine disorders or even death of the organism/subpopulation or its descendants [1].

Subfertility of women at reproductive age is often caused by endocrine disorders, occasionally (~10% of the cases) characterized by polycystic ovary syndrome (PCOS) [2,3]. Although there is strong evidence that PCOS is a genetic disease, diagnoses do not always indicate the cause of the sub/infertility neither the mode of action of the causative agent [4]. It has been shown that PCOS can be correlated with exposure to the endocrine disruptor bisphenol A (BPA) [5]. Also, women with PCOS when

exposed to nicotine have a higher chance to acquire other metabolic disorders [6]. Probably, many other endocrine active substances present in the environment, food, drugs or cosmetics will also cause subfertility. More than 25% of the subfertility cases are of unknown etiology and remain not diagnosed, and the affected couples attempt to achieve their parenthood experience through ART. However, knowledge on the source of subfertility, as well as the risks of oocyte defects during maturation will improve the success of IVF programs. Women exposed to a determined toxic agent may have a temporary negative effect on their oocyte quality, which may reflect on the health of the offspring.

Most information regarding reproductive toxicology has been obtained from case reports, clinical analyses and *in vivo* tests with mice and rats. The use of laboratory animals for such tests is under debate for many years [7], because *in vivo* reproductive toxicity tests require large numbers of animals. Indeed approximately 70% of all the animals used in toxicological studies are for assays involving reproductive toxicity [8]. Furthermore, rodents are not the most suitable model animals for human, especially when considering oocyte maturation and fertilization [9].

* Correspondence: R.Rodriguesdossantos@pq.cnpq.br

¹Institute for Risk Assessment Sciences, Faculty of Veterinary Medicine, Utrecht University, P.O. Box 80152, 3508 TD Utrecht, The Netherlands

²Laboratory of Wild Animal Biology and Medicine, Federal University of Pará, Rua Augusto Corrêa, Campus Básico, CEP 66075-110 Belém, Pará, Brazil
Full list of author information is available at the end of the article

Although the *in vivo* assays should not as yet be eliminated, alternative assays including computational, integrative *in vitro* tests using embryonic stem cells and cell lines are novel approaches in reproductive toxicology [10,11]. Available screening tests for hormone-like active compounds do not identify endocrine disruptors nor assure that a chemical will have an endocrine activity [12]. Nevertheless, such tests are useful to suggest the potential effect of certain substances. Furthermore, if the tests are integrated and projected with a clear knowledge on the main targets of reproductive toxic compounds and their involved mechanisms, the use of a large number of laboratory animals can be avoided.

Due to their complexity, not always reproductive cells such as oocytes can be mimicked by somatic cells. Moreover, oocytes and their surrounding cumulus cells have to undergo a unique process known as maturation that for the oocyte includes meiosis. Indeed, during maturation, oocytes are susceptible to epigenetic alterations that may interfere with fertilization and early embryo development [13]. Accordingly, exposure to polycyclic aromatic hydrocarbons before ART affects oocyte quality, as observed in women with a lower rate of cell division after IVF [14]. By evaluating data from different laboratories, it has been suggested that maturation of bovine oocytes can be used as a reliable model to screen toxic agents for human oocytes [15-17]. Also, the use of the porcine model has been indicated to evaluate oocyte maturation as a model for human oocytes due to some similarities between these species [18-20]. Furthermore, both bovine and porcine models can reduce the large number of laboratory animals used for reproductive testing, since oocytes can be obtained from slaughterhouse ovaries which are leftover organs when animals enter the food production chain.

The REACH (Registration, Evaluation, and Authorization of Chemicals) legislation is a European program impacting manufacturers worldwide since 2007/2008. For instance, marketing in Europe of any chemical (pure form or in a formulation) is allowed solely if data on physical/chemical properties, toxicity and environmental effects are provided. As a result, there is an enormous increase in the number of experimental animals used to test the safety of many thousands of chemicals, existing and new ones [21]. However, the adopted EU directive from 2010 focus on the protection of animals used for scientific purposes and demands a decrease in the number of animals used in research, including toxicity (drug) testing [22]. Innovative approaches have been suggested by developing a battery of tests targeting aspects of the reproductive cycle, and by integrating the approaches based on the mechanisms in cells and tissues [21]. The possibility to use slaughterhouse material for *in vitro* tests related to gametes and early embryo development appears as an important option to diminish the number of *in vivo* tests.

The aim of the present review was to evaluate the usefulness of using bovine and porcine IVM/IVF as model for reprotoxicity studies. For this, we address reproductive toxins and toxicants and their main effects on female fertility focusing on *in vitro* oocyte maturation and fertilization. Moreover, the use of oocytes from cattle and pig provides insight on the possibilities to evaluate chemicals on the *in vitro* oocyte maturation, fertilization and early embryonic development (preimplantation stage) as a model for human.

Methods

The present review has been prepared based on a survey of data available in PubMed (1998 to June 2014), from which non-English manuscripts were excluded. The search terms were "oocyte", "*in vitro* maturation", "*in vitro* fertilization" and "toxicology", and two independent persons analyzed the data in the papers. Only studies indicating experimental procedures applying bovine and porcine cells as *in vitro* models were considered. Data from mice and human were also considered to compare with the bovine and porcine *in vitro* data. Most human data are from women submitted to ART procedures due to fertility problems. Review papers were used solely to support our introduction and discussion sections.

Oocyte maturation, fertilization and embryo development: species differences

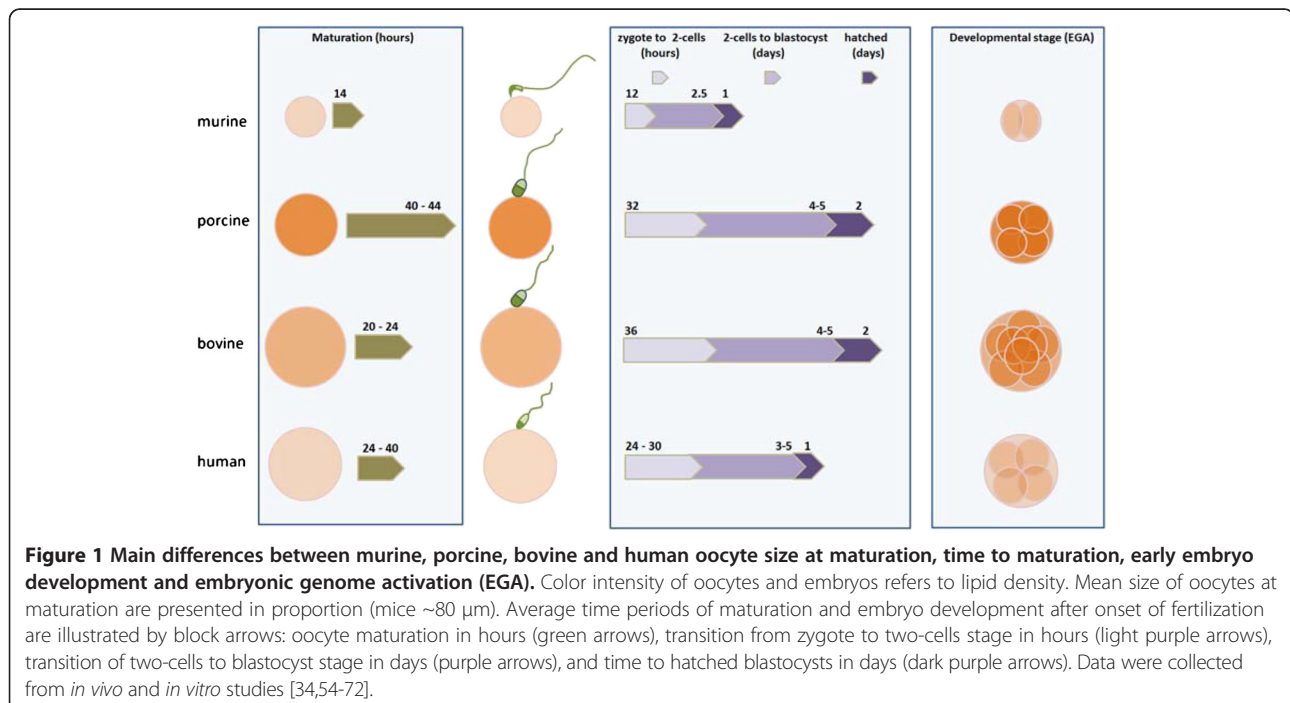
Oogenesis is an extremely specialized process and, depending on the species, the formation of a mature oocyte from the initial oocyte enclosed in dormant primordial follicles is completed in several weeks, as in mice [23,24], or several months as in bovine, porcine and human [25-27]. Ovarian folliculogenesis is not detailed here, as it is well described in some recent reviews [28,29]. When an oocyte is fully grown, it is capable of resuming meiosis, but further follicle growth is necessary to deliver an oocyte that will mature properly and give rise to an embryo after fertilization. As means of toxicological research, this is a unique event because (i) apart from that it is completed in a relatively short period of time, 14 hours in mice to 44 hours in sows, cytoplasmic and nuclear maturation require dynamic interactions that will reflect the success of fertilization [30], (ii) species-specific differences have been described during chromatin configuration at germinal vesicle stages [31,32], and (iii) the maturation process differs among mammalian species. For example, protein synthesis is required for germinal vesicle breakdown (GVBD) in cow [33], pig [34] and human [35], but not in mice [36]. More details on the differences between large mammals and laboratory animals are available in a review from Bilodeau-Goeseels [37].

In general, after ovulation, the mature oocyte is able to be fertilized and will give rise to an embryo after a series

of coordinated processes in both sperm and oocyte: spermatozoa binding to the zona pellucida, an acrosome reaction which gives the ability to the spermatozoa to penetrate the zona pellucida, binding of the spermatozoa to the plasma membrane leading to membrane depolarization and Ca^{2+} dependent events that include cortical granule exocytosis, cell cycle resumption with concomitant decreases in maturation promoting factor (MPF) and mitogen-activated protein (MAP) kinase activities, and recruitment of maternal mRNAs. After zygote formation, depending on the species, a defined number of cellular divisions take place under control of maternal mRNAs, where after embryo development will be taken over by mRNAs transcribed from the embryonic genome. Embryos with insufficient embryonic DNA transcription will cease development. Parallel to these cellular divisions, from the zygote towards the morula/blastocyst stage the embryonic genome will be demethylated and thereafter be remethylated shortly before implantation. This process of DNA methylation is indispensable for proper embryo development and protects the embryo from premature death *in utero* [38,39].

Although the oocyte has conserved developmental pathways throughout evolution, phylogenetic analysis of proteins that are involved with fertilization or embryonic development revealed that human oocytes are more closely related in this respect to cow oocytes than mouse oocytes [40]. Figure 1 depicts the main similarities among murine, bovine and porcine model when compared to human. For example, oocyte diameter, the time to reach the 2-cell stage, blastocysts or hatching is

similar between human, porcine and bovine, but is shorter in mice. Moreover, the time period of oocyte maturation and initial embryo development is very similar when human and bovine are compared. When the developmental stage of embryonic genome activation is observed, then human is more similar to pigs than to cattle or mice [41-43]. The morphological similarity between oocytes from women and mice is related to the cellular opacity. In these species, oocytes are translucent, while oocytes from cows are dark and from sows are very dark, due to the accumulation of lipid vesicles in the ooplasm [44]. Even though the concentration of fatty acids differ between the oocytes of the afore mentioned species, their composition is similar between these gametes [45,46]. Lipids stored in the oocyte will function as energy source during oocyte maturation but used in a less extent during embryo development [47]. The role of the large lipid content throughout porcine embryo development remains unknown, as lipid removal from cleavage stage embryos does not seem to affect their further development to the blastocyst stage [48]. Despite of difference in oxygen consumption between bovine, mouse and porcine embryos, at the morula stage, a sharp rise of metabolic activity is recorded in all three species [44]. Murine oocytes have low amounts of fatty acids and are therefore more glucose dependent for embryo development than bovine or porcine oocytes [49]. DNA methylation results from the activity of DNA methyltransferases (DNMTs) and these proteins show a greater degree of structural similarity between human and bovine than between human and mouse [50-53].



Oocyte maturation, fertilization and subsequent embryo development involve multifaceted changes that are not easily mimicked by cell lines. Besides this, there are chronological and biochemical differences between laboratory and domestic mammals during the course of oocyte maturation and development of the embryo. Considering the feasibility to obtain ovaries from pigs and cows, the readily efficient protocols available from oocyte maturation to embryo production *in vitro*, as well as physiological and phylogenetic similarities, the use of these animal models in reproductive toxicology is encouraged [17,73,74]. Laboratory animals remain valuable research tools particularly humanized mice, i.e. those carrying functioning human genes, cell, tissues or organs [75]. However, oocyte maturation, fertilization and embryo development in mice cannot easily be genetically changed to be humanized; translational studies in these rodents will not always reflect the effects in human when female reproduction is evaluated.

Exposure to toxic compounds in relation to reproductive failure

People are constantly exposed to toxic compounds present in the environment, food, drugs, and for instance cosmetics or due to occupational exposure. Exposure to several chemicals may also vary between species. For example, pigs are environmentally exposed to polychlorinated biphenyl (PCB) and dioxins, which can accumulate in fatty tissues and meat [76]. Therefore, human contamination is also related to food consumption and, as accumulated in fat, risks of exposure to new-born babies during breast-feeding is evident [77]. Human antidepressants, on the other hand, have been described as causing reproductive disorders in mice [78], while no clear effects on human fertility could be detected [79,80]. However, such drugs can become important environmental reproductive toxicants in the aquatic environment [81]. Phthalates are environmental contaminants also used in the coating of oral medications, making the drug as a toxicant exposure source [82]. Another agent, acrylamide, is known as an occupational toxicant [17]. However, this compound can also be produced during food processing [83], including baby food and infant formulas [84], and can pass through the placenta thereby affecting fetal growth [85]. Moreover, as shown in bovine [17], acrylamide affects oocyte maturation. In the present review, we divided the toxic compounds in five main categories (environmental, food, drugs, cosmetics or occupational) for didactical reasons. For details on specific toxic compounds, Table 1 is given as reference.

Environmental toxic compounds

Although the use of some agricultural fertilizers, pesticides or animal parasitological solutions has been banned or

diminished in many countries, the ability of these substances to persist in the environment (soil and water resources) presents a threat to human and animal health. This means that the negative effect of these compounds may be present longer in a population than in the environment. Moreover, for every toxic compound that has been banned or diminished, one or even more hazardous substances have come back due to adaptations in the production of new so-called less harmful metabolites. Therefore, the final threat may even increase instead of decrease or stabilize. For instance, atrazine is a 21st century herbicide which also acts as an endocrine disruptor [115] and its metabolites such as desethylatrazine [116] and cyanuric acid [117] might persist in the environment. In human, a survey quantifying biomarkers in maternal and umbilical cord serum to detect *in utero* exposure to pesticides showed that those agricultural contaminants affect offspring outcome and development [118]. Many reproductive dysfunctions are likely caused by environmental toxicants. To exclude this source of contamination is very difficult indeed. However, systematic studies detecting the main harmful compounds are needed to define alternatives to substitute or limit their use. From the agricultural chemicals, carbedazim has been identified as a potential endocrine disruptor as shown in a human ovarian granulosa-like tumor cell line [119]. Chlorinated pesticides like dichlorodiphenyltrichloroethane (DDT) and hexachlorobenzene (HCB) in sera from women submitted to IVF have been related to impaired embryo implantation [120]. Methoxychlor, a substitute for DDT, is a pesticide linked to female reproductive dysfunction by hypermethylation in estrogen receptors, and phosphatase and tensin homolog (PTEN) signaling, which is involved in follicular activation [121].

Plasticizers, mostly phthalates used to increase the flexibility of materials like construction products, cosmetics, medical devices or to coat medication, encompass another important group of environmental contaminants. These chemicals do not accumulate in human follicular fluid [122]. However, prenatal exposure to phthalates may lead to estrogenic or anti-androgenic effects in girls at pubertal age affecting uterine volume [123]. It can be expected that impaired steroidogenesis will lead to impaired oocyte development.

PCBs and dioxins can disturb female fertility [124] and embryo development [125,126]. Exposure *in utero* to these compounds delayed reproductive development especially in girls [127]. There is heightened investment as well as apprehension on nanoparticle research. For example, nanoparticles containing silver are able to inhibit porcine oocyte maturation [94], but knowledge on the possible effects and endocrine interactions on human reproduction is limited [128]. The use of *in vitro* models will help to predict the risks of these compounds on

Table 1 Toxic compounds tested in vitro using bovine and porcine models

<i>Environmental</i>	<i>Species</i>		<i>Exposure</i>			<i>Cumulus</i>		<i>Oocytes</i>			<i>Embryos</i>			
	<i>Bovine</i>	<i>Porcine</i>	<i>IVM</i>	<i>IVF</i>	<i>IVC</i>	<i>Viability</i>	<i>Expansion</i>	<i>Viability</i>	<i>MII</i>	<i>Fertilization/Activation</i>	<i>2-4 cells</i>	<i>Blast</i>	<i>N nuclei</i>	<i>Ploidy</i>
Anabasine [86]		86	86				86							
Atrazine [17,87,88]	17,87	88	17,87,88	87		17,88			17, 88	87		87		
Benzo(a)pyrene [15]	15		15	15		15			15	15				
Benzyl butyl phthalate [89]		89	89				89		89					
Cadmium [15,17,86]	15,17	86	15,17,86	15		15,17	86		15,17	15				
Carbedazim [15]	15		15	15		15			15	15				
4-Chloro-3-methyl phenol [89]		89	89				89		89					
Cotinine [17,86]	17	86	17,86			17	86		17					
Cycloheximide [15,17]	15,17		15,17	15		15,17			15,17	15				
DEHP [89,90]	90	89	89,90				89		89,90		90	90		
Diazinon [88,91]		88,91	88,91	91	91	88		91	88	91	91	91		
DDT [92]	92		92						92	92	92	92	92	
Fenoxaprop-ethyl [88]		88	88			88			88					
Hexachlorocyclohexane [92]	92		92						92	92	92	92	92	
Lindane [15]	15		15	15		15			15	15				
Malathion [88,91]		88,91	88,91	91	91	88		91	88	91	91	91		
Methoxychlor [92]	92		92						92	92	92	92	92	
MEHP [17,90,93]	17,90,93		17,90,93			17	93		17,90,93		90	90		
Nanoparticles Au-Ag [94]		94	94				94		94					
Nicotine [17,86,95,96]	17,95,96	86	17,86,95,96	95	95	17	86,95		17,95,96	95	95,96	95,96	96	96
PCB mixtures [19,97-102]	97-99	19,100-102	19,97-101	101	102	19,99,100	19,100	19	19,97-100	19,97,98, 100,101	19,97, 98,101	19,97,98, 100-102	98,101, 102	
4-tert-octylphenol [103]	103		103						103	103	103	103	103	
Food														
Bisphenol A [89]		89	89				89		89					
α-Chaconine [104]	104		104	104	104						104	104		
Daidzein [105]		105	105				105		105	105	105	105		
Deoxynivalenol [106-108]		106-108	106-108		106	108	108		106-108	108	107,108	107,108	107,108	107,108
Flavanones [109]		109	109				109		109	109	109	109		
Genistein [15]	15		15	15		15			15	15				

Table 1 Toxic compounds tested in vitro using bovine and porcine models (Continued)

α-Solanine [104]	104	104	104	104	104	104	104		
Solanidine-N-oxide [104]	104	104	104	104	104	104	104		
Zearelanone [107,110,111]	110,111	107	107,110,111		107,110, 111	107,110	107,110	107	107
α-zearelanol [106,107,112]		106,107, 112	106,107	106	106, 107	107,112	107,112	107,112	107
β-zearelanol [106,107]		106,107			106,107	107	107	107	107
Drugs									
Busulfan [15]	15	15	15	15	15	15			
Diethylstilbestrol I [15,17]	15,17	15,17	15	15,17	15,17	15			
17β-Estradiol [17,103]	17,103	17,103		17	17,103	103	103	103	
Ionomycin [15]	15	15	15	15	15	15			
Ketoconazole [15]	15	15	15	15	15	15			
Methyl acetoacetate [15]	15	15	15	15	15	15			
Mifepristone [15]	15	15	15	15	15	15			
Nocodazole [15,17]	15,17	15,17	15	15,17	15,17	15			
Okadaic acid [95]	95	95			95	95			
Piperazine [17]	17	17		17	17				
Swainsonine [113]	113	113	113	113			113	113	113
Taxol [95]	95	95			95	95			
Cosmetics									
Butylparaben [15]	15	15	15	15	15	15			
9-cis-Retinoic acid [114]	114	114					114	114	
Retinoic acid [17]	17	17		17	17				
Occupational									
Acrylamide [17]	17	17		17	17				

DDT: Dichlorodiphenyltrichloroethane; DEHP: Di-(2-ethylhexyl) phthalate; MEHP: Mono-(2-ethylhexyl) phthalate; PCB: polychlorinated biphenyl.

oocyte maturation and subsequent fertilization and embryo development.

Nicotine and other chemicals present in cigarette smoke, e.g. anabasine, benzo(a)pyrene, cadmium and cotinine, are environmental contaminants that have not only been demonstrated to cause neoplasia but also reproductive failure. Bordel et al. [129] have shown that nicotine induces apoptosis in ovarian follicles. Different from phthalates, chemicals present in cigarette smoke can accumulate in follicular fluid. The main tobacco related compounds benzo(a)pyrene, cadmium, and cotinine for instance were found in human follicular fluid and related to fertility failure [130,131]. Cigarette smoke also leads to reduced concentrations of anti-Müllerian hormone (AMH) in follicular fluid, which may negatively impact oocyte development [132]. More recently, it has been reported that *in utero* exposure to cigarette smoke can impair endocrine signaling in female fetuses and can inhibit the progression of early ovarian follicle development [133]. Furthermore cotinine, a nicotine metabolite, has been detected in follicular fluid from passive smokers [134,135], which is a warning also for non-smoker women constantly exposed to cigarette smoke.

Food toxic compounds

Together with environmental toxic compounds, exposure to food contaminants can also affect animal and human reproductive function. Food toxic agents can be of natural origin, as mycotoxins, and can be synthetic, for instance BPA. While BPA is known as an endocrine disruptor, mycotoxins have the ability to act either as endocrine disruptors or as endocrine active substances [136].

Mycotoxins like deoxynivalenol (DON), zearalenone (ZEA) and its metabolites (alpha- and beta-zearalenol) can cause reproductive failure. Although DON has been associated with gastroenteritis [137], there are reports on the reproductive effect of this mycotoxin in domestic animals [138]. Abundant knowledge is available on the estrogenic effect of ZEA in human and domestic animals [136]. However, there are many of the so-called emerging mycotoxins, e.g. enniatins, alternariol and beauvericin, that need to be screened on their action on female reproduction. For example, it is known that alternariol at high concentrations impairs progesterone synthesis in porcine granulosa cells [139]. Beauvericin might be another potential mycotoxin with reproductive effects since recently this mycotoxin was advocated to be an antitumor candidate due to its role in the inhibition of MAP kinase phosphorylation [140]. Although BPA does not accumulate in follicular fluid [122], it negatively affects human oocyte maturation *in vitro* by disturbing spindle architecture and chromosome organization [141]. However, there is a lack of data revealing if BPA affects human oviduct, placenta and pubertal development [142].

Alpha-chaconine and alpha-solanine are natural glycoalkaloids, natural pesticides, found in potatoes. These secondary metabolites are produced by potatoes when threatened by pathogens or insects. This means that injuries to some vegetables like potatoes can pose a risk to human health [143]. Besides this, most information related to female reproduction, however, is limited to studies in rats [144] and mice [145]. Phytoestrogens, with isoflavones and flavanones as the most studied are also investigated for their effects on human reproduction. Genistein is found in soybeans. Although isoflavones like genistein do not impair murine oocyte maturation [146], this phytoestrogen, as well as daidzein, can affect the development of mice reproductive organs [147]. It has been shown also that although daidzein does not affect porcine oocyte maturation, it is able to disturb progesterone secretion by cumulus cells [105]. Recently, Solak et al. [109] also showed that naringenin and 8-prenyl-naringenin impaired porcine oocyte maturation by different mechanisms. Besides these solid evidences of the risks of phytoestrogens, and the fact that human consumption of these compounds is high, epidemiological data in human are scarce and more studies using animal models are crucial as every day more phytoestrogens are recognized or included as therapeutic compounds [148].

In a sophisticated cohort study in France, Chan-Hon-Tong et al. [149] acquired detailed information on dietary exposure to potential contaminants in women before pregnancy and at the third trimester of pregnancy. Although exposure before pregnancy appeared higher than at the end of pregnancy, the fetus still can be exposed to contaminants like mycotoxins, acrylamide and PCBs. Besides, exposure before pregnancy may also impair the ability of a woman to conceive naturally, thus requiring ART.

Drugs, cosmetics and occupational toxic compounds

Research on the endocrine effect of drugs, cosmetics and occupational toxic compounds is available but more limited. Probably because some adverse effects are already expected, like the use of antineoplastic drugs, or due the fact that exposure to occupational toxicants is already under strict regulation. However, in some developing countries children are constantly exposed to parasites, requiring a routinely based administration of drugs such as antifungals, which may act also as endocrine disruptors [150]. Maternal anemia or risks of perinatal death can be caused by helminthic infestation, which must be treated with anthelmintic drugs. But, such drugs may also have embryotoxic effects [151].

In humans a relatively constant exposure to drugs is inevitable, either by choice (contraceptives) or to treat diseases (chemotherapeutic, antiparasitic, antidepressants or antiepileptic agents) which, after chronic use, may affect fertility or embryo development [152-154]. It is well

known that many chemotherapeutic agents, particularly alkylating agents, impair fertility not because of their cytotoxic characteristics but also by leading to premature ovarian failure or insufficiency, affecting oocyte reserve, activation and growth [155]. Other drugs like busulfan, diethylstilbestrol, 17 β -estradiol, mifepristone, ketoconazole, piperazine, methyl acetoacetate, okadaic acid and taxol are endocrine disruptors. Although *in vitro* data in bovine and porcine show the risks that these compounds bring to oocyte maturation and fertilization, little is known about their effect on human oocyte maturation and fertilization.

Cosmetics bring concerns because of their increase in the market and augmented use by humans, including children. Among them, compounds present in UV-filters like benzophenone are endocrine disruptors that have been detected in human serum [156]. Topical use of retinoic acid has been included as a hazard for its teratogenic risk, but such exposure is too low when compared to the oral administration of vitamin A [157]. Besides, Tahaei et al. [158] showed that treatment of murine oocyte with retinoic acid during IVM has positive impact on maturation rate and subsequent embryo development after IVF.

Also, occupational toxicants have been analyzed for effects on reproduction. Acrylamide has been characterized as an occupational toxicant, once it is used to synthesize polyacrylamides, one of the compounds used in gels for electrophoresis. Due to severe legislation to protect researchers and analysts who work with this compound, most risks are avoided. However, this compound still harms human health since it is also a food toxicant. Dimethylene glycol monobutyl ether (DGBE) is present in latex paints, but is not toxic for rats after 10 weeks of exposure [159]. However, humans who by their profession may be exposed to these compounds for years might be affected. Pesticides, including insecticides and rodenticides, also act as occupational toxicants, affecting adults and children [160]. Even at low concentrations, chronic exposure to these compounds affects endocrine activity [161].

Final remarks

Many couples apply to ART because of fertility problems and more than one fifth of the causes of sub/infertility in female are unknown. There is compelling evidence that fertility problems are related to the exposure to different sources of contaminants, among them dietary and environmental appearing as a great concern. Some of the identified chemicals can affect the oocyte already during maturation. If the oocyte does not follow an apoptotic pathway, there is still the risk that fertilization and subsequent embryo development will be somehow affected. Furthermore, when ART is necessary, patients should be advised about the environmental and dietary contaminants

not only because of metabolic diseases, but also to prevent exposure to hazardous chemicals.

To identify the effect of such dietary and environmental compounds, cell lines have been used as an important screening tool. However, a cell line will not always mimic gametes during a critical phase of maturation, which requires specific biochemical changes. It is possible to apply reliable and more complex screening methods, as well as decrease the number of laboratory animals, by using bovine or porcine as models for IVM, IVF and embryo production *in vitro*. Obviously the bovine/porcine model will not replace rapid and massive screenings with cell lines, and cannot completely eliminate *in vivo* studies with rodents. Although, the research material will be obtained from healthy animals that entered the food chain and no extra facilities are necessary to house animals, bovine and porcine IVM/IVF models have certain disadvantages that should be considered when applied to test potential toxic compounds. For instance, the origin of slaughterhouse-derived materials (ovaries) is often unknown such as age, reproductive status, possible reproductive disorders or stressful conditions. To overcome this, Ovum Pick-Up (OPU) from donors with known background can provide a solution. Even though cattle oocyte development is rather similar to that of humans, in *in vivo* studies the porcine appears as a good model for transgenerational research since it is a monogastric species with a gastrointestinal tract similar to that of humans. Overweighing supposed risks of certain chemicals should be avoided. However, human beings are daily exposed to different contaminants. Even though exposure may occur at extremely low concentrations of each contaminant, chronic multi-exposure should be taken into account, and epigenetic changes affecting embryo development must be considered.

Competing interests

The authors declare that they have no competing interests.

Authors' contributions

RRS and EJS participated in the survey of the data. RRS, EJS and BAJR conceived the study, and participated in its design and wrote the manuscript. All authors read and approved the final manuscript.

Acknowledgements

BR was supported by EU FP7 Anistem PIAPP-GA-2011-286264; EpiHealthNet PITN-GA-2013-317146.

Author details

¹Institute for Risk Assessment Sciences, Faculty of Veterinary Medicine, Utrecht University, P.O. Box 80152, 3508 TD Utrecht, The Netherlands.

²Laboratory of Wild Animal Biology and Medicine, Federal University of Pará, Rua Augusto Corrêa, Campus Básico, CEP 66075-110 Belém, Pará, Brazil.

³Department of Farm Animal Health, Utrecht University, Yalelaan 104, 3584 CM Utrecht, The Netherlands. ⁴Department of Equine Sciences, Faculty of Veterinary Medicine, Utrecht University, Yalelaan 104, 3584 CM Utrecht, The Netherlands.

Received: 22 July 2014 Accepted: 5 November 2014

Published: 26 November 2014

References

- European Food Safety Authority (EFSA): Scientific Opinion on the hazard assessment of endocrine disruptors: scientific criteria for identification of endocrine disruptors and appropriateness of existing test methods for assessing effects mediated by these substances on human health and the environment. *EFSA J* 2013, **11**:3132.
- Dokras A, Witchel SF: Are young adult women with polycystic ovary syndrome slipping through the healthcare cracks? *Endocrinol Metab* 2014, **99**:1583–1585.
- Turner-McGrievy G, Davidson CR, Billings DL: Dietary intake, eating behaviours, and quality of life in women with polycystic ovary syndrome who are trying to conceive. *Hum Fertil* 2014, **12**:1–6.
- Matzuk MM, Lamb DJ: The biology of infertility: research advances and clinical challenges. *Nat Med* 2008, **14**:1197–1213.
- Kandaraki E, Chatzigeorgiou A, Livadas S, Palioura E, Economou F, Koutsilieris M, Palimeri S, Panidis D, Diamanti-Kandarakis E: Endocrine disruptors and polycystic ovary syndrome (PCOS): elevated serum levels of bisphenol A in women with PCOS. *J Clin Endocrinol Metab* 2011, **96**:480–484.
- Pau CT, Keeffe CC, Welt CK: Cigarette smoking, nicotine levels and increased risk for metabolic syndrome in women with polycystic ovary syndrome. *Gynecol Endocrinol* 2013, **29**:551–555.
- Bremer S, Pellizzer C, Hoffmann S, Seidle T, Hartung T: The development of new concepts for assessing reproductive toxicity applicable to large scale toxicological programmes. *Curr Pharm Des* 2007, **13**:3047–3058.
- Spielmann H: The way forward in reproductive/developmental toxicity testing. *Altern Lab Anim* 2009, **37**:641–656.
- Ménézo YJ, Héroubelle F: Mouse and bovine models for human IVF. *Reprod Biomed Online* 2002, **4**:170–175.
- Piersma AH: Innovations in testing strategies in reproductive toxicology. *Methods Mol Biol* 2013, **16**:295–305.
- Piersma AH, Bosgra S, van Duursen MB, Hermsen SA, Jonker LR, Kroese ED, van der Linden SC, Man H, Roelofs MJ, Schulpen SH, Schwarz M, Uibel F, van Vugt-Lussenburg BM, Westerhout J, Wolterbeek AP, van der Burg B: Evaluation of an alternative in vitro test battery for detecting reproductive toxicants. *Reprod Toxicol* 2013, **38**:53–64.
- Nohynek GJ, Borgert CJ, Dietrich D, Rozman KK: Endocrine disruption: fact or urban legend? *Toxicol Lett* 2013, **16**:295–305.
- Sirard MA: Factors affecting oocyte and embryo transcriptomes. *Reprod Domest Anim* 2012, **47**:148–155.
- Pocar P, Brevini TAL, Fischer B, Gandolfi F: The impact of endocrine disruptors on oocyte competence. *Reproduction* 2003, **125**:313–325.
- Lazzari G, Tessaro I, Crotti G, Galli C, Hoffmann S, Bremer S, Pellizzer C: Development of an in vitro test battery for assessing chemical effects of bovine germ cells under the ReProtect umbrella. *Toxicol Appl Pharmacol* 2008, **233**:360–370.
- Luciano AM, Franciosi F, Lodde V, Corbani D, Lazzari G, Crotti G, Galli C, Pellizzer C, Bremer S, Weimer M, Modena SC: Transferability and inter-laboratory variability assessment of the in vitro bovine oocyte maturation (IVM) test within ReProTect. *Reprod Toxicol* 2010, **30**:81–88.
- Beker van Woudenberg AB, Gröllers-Mulderij M, Snel C, Jeurissen N, Stierum R, Wolterbeek A: The bovine oocyte in vitro maturation model: a potential tool for reproductive toxicology screening. *Reprod Toxicol* 2012, **34**:251–260.
- Ulf M: Can farm animals help to study endocrine disruption. *Domest Anim Endocrinol* 2005, **39**:430–435.
- Campagna C, Ayotte P, Sirard MA, Arsenaault G, Laforest JP, Bailey JL: Effect of an environmentally relevant metabolized organochlorine mixture on porcine cumulus-oocyte complexes. *Reprod Toxicol* 2007, **23**:145–152.
- Schoevers EJ, Santos RR, Colenbrander B, Fink-Gremmels J, Roelen BA: Transgenerational toxicity of zearalenone in pigs. *Reprod Toxicol* 2012, **34**:110–119.
- Lorenzetti S, Altieri I, Arabi S, Balduzzi D, Bechi N, Cordelli E, Galli C, Letta F, Modena SC, Narciso: Innovative non-animal testing strategies for reproductive toxicology: the contribution of Italian partners within the EU project ReProTect. *Ann Ist Super Sanita* 2011, **47**:429–444.
- European Union: Directive 2010/63/EU of the European Parliament and of the Council of 22 September 2010 on the protection of animals used for scientific purposes. *OJEU L* 2010, **276**:33.
- Wassarman PM, Litscher ES: Influence of the zona pellucida of the mouse egg on folliculogenesis and fertility. *Int J Dev Biol* 2012, **56**:833–839.
- Sanchez F, Smitz J: Molecular control of oogenesis. *Biochim Biophys Acta* 1822, **2012**:1896–1912.
- Driancourt MA: Regulation of ovarian follicular dynamics in farm animals. Implications for manipulation of reproduction. *Theriogenology* 2001, **55**:1211–1239.
- Baerwald AR, Adams GP, Pierson RA: Ovarian antral folliculogenesis during the human menstrual cycle: a review. *Hum Reprod Update* 2012, **18**:73–91.
- Evans AC, Mossa F, Walsh SW, Scheetz D, Jimenez-Krassel F, Ireland JL, Smith GW, Ireland JJ: Effects of maternal environment during gestation on ovarian folliculogenesis and consequences for fertility in bovine offspring. *Reprod Domest Anim* 2012, **47**:31–37.
- Coticchio G, Dal-Canto M, Guglielmo MC, Mignini-Renzini M, Fadini R: Human oocyte maturation in vitro. *Int J Dev Biol* 2012, **56**:909–918.
- Li R, Albertini DF: The road of maturation: somatic cell interaction and self-organization of the mammalian oocyte. *Nat Rev Mol Cell Biol* 2013, **14**:141–152.
- Cortvrindt RG, Smitz JE: Follicle culture in reproductive toxicology: a tool for in vitro testing of ovarian function. *Hum Reprod Update* 2002, **8**:243–254.
- Tan JH, Wang HL, Sun XS, Liu XS, Sui HS, Zhang J: Chromatin configurations in the germinal vesicle of mammalian oocytes. *Mol Hum Reprod* 2009, **15**:1–9.
- Sirard MA: Follicle environment and quality of in vitro matured oocytes. *J Assist Reprod Genet* 2011, **28**:483–488.
- Hunter AG, Moor RM: Stage-dependent effects of inhibiting ribonucleic acids and protein synthesis on meiotic maturation of bovine oocytes in vitro. *J Dairy Sci* 1987, **70**:1646–1652.
- Motlik J, Fulka J: Factors affecting meiotic competence in pig oocytes. *Theriogenology* 1986, **25**:87–96.
- Cha KY, Chian RC: Maturation in vitro of immature human oocytes for clinical use. *Hum Reprod Update* 1998, **4**:103–120.
- Schultz RM, Wassarman PM: Biochemical studies of mammalian oogenesis: protein synthesis during oocyte growth and meiotic maturation in the mouse. *J Cell Sci* 1977, **24**:167–194.
- Bilodeau-Goeseels S: Cows are not mice: the role of cyclic AMP, phosphodiesterases, and adenosine monophosphate-activated protein kinase in the maintenance of meiotic arrest in bovine oocytes. *Mol Reprod Dev* 2011, **78**:734–743.
- Ueda Y, Okano M, Williams C: Roles for Dnmt3b in mammalian development: a mouse model for the ICF syndrome. *Development* 2006, **133**:631–647.
- Reik W, Dean W, Walter J: Epigenetic reprogramming in mammalian development. *Science* 2001, **293**:1089–1093.
- Sylvestre EL, Robert C, Pennetier S, Labrecque R, Gilbert I, Dufort I, Léveillé, Sirard MA: Evolutionary conservation of the oocyte transcriptome among vertebrates and its implications for understanding human reproductive function. *Mol Hum Reprod* 2013, **19**:369–379.
- Jarell VL, Day BN, Prather RS: The transition from maternal to zygotic control of development occurs during the 4-cell stage in the domestic pig, *Sus scrofa*: quantitative and qualitative aspects of protein synthesis. *Biol Reprod* 1991, **44**:62–68.
- Frei RE, Schultz GA, Church RB: Qualitative and quantitative changes in protein synthesis occur at the 8-16-cell stage of embryogenesis in the cow. *J Reprod Fertil* 1989, **86**:637–641.
- Levey RH, Stull GB, Brinster RL: Poly(A) and synthesis of polyadenylated RNA in the preimplantation mouse embryo. *J Exp Zool* 1978, **203**:351–360.
- Sturmey RG, Reis A, Leese HJ, McEvoy TG: Role of fatty acids in energy provision during oocyte maturation and early embryo development. *Reprod Domest Anim* 2009, **44**:50–58.
- McEvoy TG, Coull GD, Broadbent PJ, Hutchinson JSM, Speake BK: Fatty acid composition of lipids in immature cattle, pig and sheep oocytes with intact zona pellucida. *J Reprod Fert* 2000, **118**:163–170.
- Haggarty P, Wood M, Ferguson E, Hoag G, Srikantharajah A, Milna E, Hamilton M, Bhattacharya S: Fatty acids metabolism in human preimplantation embryos. *Hum Reprod* 2006, **21**:766–773.
- Sturmey RG, Leese HJ: Energy metabolism in pig oocytes and early embryos. *Reproduction* 2003, **126**:197–204.
- Nagashima H, Hiruma K, Saito H, Tomii R, Ueno S, Nakayama N, Matsunari H, Kurome M: Production of live piglets following cryopreservation of embryos derived from in vitro-matured oocytes. *Biol Reprod* 2007, **76**:900–905.

49. Mihalik J, Rehák P, Koppel J: **The influence of insulin on the in vitro development of mouse and bovine embryos.** *Physiol Res* 2000, **49**:347–354.
50. Rodriguez-Osorio N, Wang H, Rupinski J, Bridges SM, Memili E: **Comparative functional genomics of mammalian DNA methyltransferases.** *Reprod Biomed Online* 2010, **20**:243–255.
51. Misirlioglu M, Page GP, Sagirkaya H: **Dynamic of global transcriptome in bovine matured oocytes and preimplantation embryos.** *Proc Natl Acad Sci U S A* 2006, **103**:18905–18910.
52. Vassena R, Dee Schramm R, Latham KE: **Species-dependent expression patterns of DNA methyltransferase genes in mammalian oocytes and preimplantation embryos.** *Mol Reprod Dev* 2005, **133**:430–436.
53. Huntriss J, Hinkins M, Oliver B: **Expression of mRNAs for DNA methyltransferases and methyl-CpG-binding proteins in the human female germ line, preimplantation embryos and embryonic stem cells.** *Mol Reprod Dev* 2004, **67**:323–336.
54. Otoi T, Yamamoto K, Koyama N, Tachikawa S, Suzuki T: **Bovine oocyte diameter in relation to developmental competence.** *Theriogenology* 1997, **48**:769–774.
55. Durinzi KL, Saniga EM, Lanzendorf SE: **The relationship between size and maturation in vitro in the unstimulated human oocyte.** *Fertil Steril* 1995, **63**:404–406.
56. Serta RT, Michalopoulos J, Seibel MM, Kiessling AA: **The developmental potential of mouse oocytes matured in serum-free culture conditions.** *Hum Reprod* 1995, **10**:1810–1815.
57. Sanfins A, Lee GY, Plancha CE, Overstrom EW, Albertini DF: **Distinctions in meiotic spindle structure and assembly during in vitro and in vivo maturation of mouse oocytes.** *Biol Reprod* 2003, **69**:2059–2067.
58. Moon JH, Jee BC, Ku SY, Suh CS, Kim SH, Choi YM, Kim JG, Moon SY: **Spindle positions and their distributions in in vivo and in vitro matured mouse oocytes.** *Hum Reprod* 2005, **20**:2207–2210.
59. Laurincik J, Rath D, Niemann H: **Differences in pronucleus formation and first cleavage following in vitro fertilization between pig oocytes matured in vivo and in vitro.** *J Reprod Fertil* 1994, **102**:227–284.
60. Wang WH, Abeydeera LR, Prather RS, Day BN: **Morphologic comparison of ovulated and in vitro-matured porcine oocytes, with particular reference to polyspermy after in vitro fertilization.** *Mol Reprod Dev* 1998, **49**:308–316.
61. Rizos D, Ward F, Duffy P, Boland MP, Lonergan P: **Consequences of bovine oocyte maturation, fertilization or early embryo development in vitro versus in vivo: implications for blastocyst yield and blastocyst quality.** *Mol Reprod Dev* 2002, **61**:234–248.
62. Van de Leemput EE, Vos PL, Zeinstra EC, Bevers MM, van der Weijden GC, Dieleman SJ: **Improved in vitro embryo development using in vivo matured oocytes from heifers superovulated with a controlled preovulatory surge.** *Theriogenology* 1999, **52**:335–349.
63. Jones GM, Trounson AO, Gardner DK, Kausche A, Lolatgis N, Wood C: **Evolution of a culture protocol for successful blastocyst development and pregnancy.** *Hum Reprod* 1998, **13**:169–177.
64. Cekleniak NA, Combelles CM, Ganz DA, Fung J, Albertini DF, Racowsky C: **A novel system for in vitro maturation of human oocytes.** *Fertil Steril* 2001, **75**:1185–1193.
65. Harlow GM, Quinn P: **Development of preimplantation mouse embryos in vivo and in vitro.** *Aust J Biol Sci* 1982, **35**:187–193.
66. Papaioannou VE, Ebert KM: **The preimplantation pig embryo: cell number and allocation to trophectoderm and inner cell mass of the blastocyst in vivo and in vitro.** *Development* 1988, **102**:793–803.
67. Rath D, Niemann H, Torres CR: **In vitro development to blastocysts of early porcine embryos produced in vivo or in vitro.** *Theriogenology* 1995, **43**:913–926.
68. Christians E, Davis AA, Thomas SD, Benjamin IJ: **Maternal effect of Hsf1 on reproductive success.** *Nature* 2000, **407**:693–694.
69. Anderson JE, Matterer RL, Abeydeera LR, Day BN, Prather RS: **Cyclin B1 transcript quantitation over the maternal to zygotic transition in both in vivo and in vitro-derived 4-cell porcine embryos.** *Biol Reprod* 1999, **61**:1460–1467.
70. Prather RS: **Nuclear control of early embryonic development in domestic pigs.** *J Reprod Fertil Suppl* 1993, **48**:17–29.
71. Braude P, Bolton V, Moore S: **Human gene expression first occurs between the four- and eight-cell stages of preimplantation development.** *Nature* 1988, **332**:459–461.
72. Bouniol-Baly C, Nguyen E, Besombes D, Debey P: **Dynamic organization of DNA replication in one-cell mouse embryos: relationship to transcriptional activation.** *Exp Cell Res* 1997, **236**:201–211.
73. Petro EM, Leroy JL, Van Cruchten SJ, Covaci A, Jorssen EP, Bols PE: **Endocrine disruptors and female fertility: focus on (bovine) ovarian follicular physiology.** *Theriogenology* 2012, **78**:1887–1900.
74. Swindle MM, Makin A, Herron AJ, Clubb FJ Jr, Frazier KS: **Swine as models in biomedical research and toxicology testing.** *Vet Pathol* 2012, **49**:344–356.
75. Brehm MA, Jouvet N, Greiner DL, Shultz LD: **Humanized mice for the study of infectious diseases.** *Curr Opin Immunol* 2013, **25**:428–435.
76. Shen H, Henkelmann B, Rambeck WA, Mayer R, Wehr U, Schramm KW: **The predictive power of the elimination of dioxin-like pollutants from pigs: an in vivo study.** *Environ Int* 2012, **38**:73–78.
77. Ulaszewska MM, Zuccato E, Davoli E: **PCDD/Fs and dioxin-like PCBs in human milk and estimation of infants' daily intake: a review.** *Chemosphere* 2011, **83**:774–782.
78. Müller JC, Imazaki PH, Boaretto AC, Lourenço EL, Golin M, Vecchi MF, Lombardi NF, Minatovicz BC, Scippo ML, Martino-Andrade AJ, Dalsenter PR: **In vivo and in vitro estrogenic activity of the antidepressant fluoxetine.** *Reprod Toxicol* 2012, **34**:80–85.
79. 't Jong GW, Einarson T, Koren G, Einarson A: **Antidepressant use in pregnancy and persistent pulmonary hypertension of the newborn (PPHN): a systematic review.** *Reprod Toxicol* 2012, **34**:293–297.
80. Kjaergaard MI, Parner ET, Vestergaard M, Sorensen MJ, Olsen J, Christensen J, Bech BH, Pedersen LH: **Prenatal antidepressant exposure and risk of spontaneous abortion – a population-based study.** *PLoS One* 2013, **28**:e72095.
81. Fong PP, Ford AT: **The biological effects of antidepressants on the molluscs and crustaceans: a review.** *Aquat Toxicol* 2014, **151**:4–13.
82. Hernández-Díaz S, Su YC, Mitechill AA, Kelley KE, Calafat AM, Hauser R: **Medications as a potential source of exposure to phthalates among women of childbearing age.** *Reprod Toxicol* 2013, **37**:1–5.
83. Cheng L, Jin C, Zhang Y: **Investigation of variations in the acrylamide and N(ε)-(carboxymethyl) lysine contents in cookies during baking.** *J Food Sci* 2014, **79**:1030–1038.
84. Erkekoglu P, Baydar T: **Toxicity of acrylamide and evaluation of its exposure in baby foods.** *Nutr Res Rev* 2010, **23**:323–333.
85. Duarte-Salles T, von Stedingk H, Granum B, Gützkow KB, Rydberg P, Törnqvist M, Mendez MA, Brunborg G, Brantsaeter AL, Meltzer HM, Alexander J, Haugen M: **Dietary acrylamide intake during pregnancy and fetal growth-results from the Norwegian mother and child cohort study (MoBa).** *Environ Health Perspect* 2013, **121**:374–379.
86. Vrsanska S, Nagyová E, Mlynarciková A, Ficková M, Kolena J: **Components of cigarette smoke inhibit expansion of oocyte cumulus complexes from porcine follicles.** *Physiol Res* 2003, **52**:383–387.
87. Graves JE, Richardson ME, Bernard RS, Camper ND, Bridges WC: **Atrazine effects on in vitro maturation and in vitro fertilization in the bovine oocyte.** *J Environ Sci Health* 2002, **37**:103–112.
88. Casas E, Bonilla E, Ducolomb Y, Betancourt M: **Differential effects of herbicides atrazine and fonoxaprop-ethyl, and insecticides diazinon and malathion, on viability and maturation of porcine oocytes in vitro.** *Toxicol In Vitro* 2010, **24**:224–230.
89. Mlynarcikova A, Nagyova E, Fickova M, Scsuková S: **Effects of selected endocrine disruptors on meiotic maturation, cumulus expansion, synthesis of hyaluronan and progesterone by porcine oocyte-cumulus complexes.** *Toxicol In Vitro* 2009, **23**:371–377.
90. Grossman D, Kalo D, Gendelman M, Roth Z: **Effect of di-(2-ethylhexyl) phthalate and mono-(2-ethylhexyl) phthalate on in vitro developmental competence of bovine oocytes.** *Cell Biol Toxicol* 2012, **28**:383–396.
91. Ducolomb Y, Casas E, Valdez A, González G, Altamiro-Lozano M, Betancourt M: **In vitro effect of malathion and diazinon on oocytes fertilization and embryo development in porcine.** *Cell Biol Toxicol* 2009, **25**:623–633.
92. Alm H, Torner H, Tiemann U, Kanitz W: **Influence of organochlorine pesticides on maturation and postfertilization development of bovine oocytes in vitro.** *Reprod Toxicol* 1998, **12**:559–563.
93. Anas MKI, Suzuki C, Yoshioka K, Iwamura S: **Effect of mono-(2-ethylhexyl) phthalate on bovine oocyte maturation in vitro.** *Reprod Toxicol* 2003, **17**:305–310.

94. Tiedemann D, Taylor U, Rehbock C, Jakobi J, Klein S, Kues WA, Barcikowski S, Rath D: **Reprotoxicity of gold, and gold-silver alloy nanoparticles on mammalian gametes.** *Analyst* 2014, **139**:931–942.
95. Li GP, Yang S, Liu Y, Sessions BR, White KL, Bunch TD: **Nicotine combined with okadaic acid or taxol adversely affects bovine oocyte maturation and subsequent embryo development.** *Fertil Steril* 2009, **92**:798–805.
96. Liu Y, Li GP, White KL, Rickords LF, Sessions BR, Aston KI, Bunch TD: **Nicotine alters bovine oocyte meiosis and affects subsequent embryonic development.** *Mol Reprod Dev* 2007, **74**:1473–1482.
97. Krogenaes AK, Nafstad I, Skare JU, Farstad W, Hafne AL: **In vitro reproductive toxicity of polychlorinated biphenyl congeners 153 and 126.** *Reprod Toxicol* 1998, **12**:575–580.
98. Pocar P, Perazzoli F, Risch M, Fischer B: **In vitro reproductive toxicity of polychlorinated biphenyls: effects on oocyte maturation and developmental competence in cattle.** *Mol Reprod Dev* 2001, **58**:411–416.
99. Pocar P, Nestler D, Risch M, Fischer B: **Apoptosis in bovine cumulus-oocyte complexes after exposure to polychlorinated biphenyl mixtures during in vitro maturation.** *Reproduction* 2005, **160**:857–868.
100. Campagna C, Sirard MA, Ayotte P, Bailey JL: **Impaired maturation, fertilization, and embryonic development of porcine oocytes following exposure to an environmentally relevant organochlorine mixture.** *Biol Reprod* 2001, **65**:554–560.
101. Campagna C, Guillemette C, Paradis R, Sirard MA, Ayotte P, Bailey JL: **An environmentally relevant organochlorine mixture impairs sperm function and embryo development in the porcine model.** *Biol Reprod* 2002, **67**:80–87.
102. Campagna C, Ayotte P, Sirard MA, Bailey JL: **An environmentally relevant mixture of organochlorines, their metabolites and effects of preimplantation development of porcine embryos.** *Reprod Toxicol* 2008, **25**:361–366.
103. Pocar P, Augustin R, Gandolfi F, Fischer B: **Toxic effects of in vitro exposure to p-tert-octylphenol on bovine oocyte maturation and developmental competence.** *Biol Reprod* 2003, **39**:462–468.
104. Wang S, Panter KE, Gaffield W, Evans RC, Bunch TD: **Effects of steroidal glycoalkaloids from potatoes (*Solanum tuberosum*) on in vitro bovine embryo development.** *Anim Reprod Sci* 2005, **85**:243–250.
105. Galeati G, Vallorani C, Bucci D, Bernardini C, Tamanini C, Parmeggiani A, Spinaci M: **Daidzein does affect progesterone secretion by pig cumulus cells but it does not impair oocytes IVM.** *Theriogenology* 2014, **74**:451–457.
106. Alm H, Greising T, Brüßow KP, Torner H, Tiemann U: **The influence of the mycotoxins deoxynivalenol and zearalenol on in vitro maturation of pig oocytes and in vitro culture of pig zygotes.** *Toxicol In Vitro* 2002, **16**:643–648.
107. Malekinejad H, Schoevers EJ, DAemen IJ, Zijlstra C, Colenbrander B, Fink-Gremmels J, Roelen BA: **Exposure of oocytes to the Fusarium toxins zearalenone and deoxynivalenol causes aneuploidy and abnormal embryo development in pigs.** *Biol Reprod* 2007, **77**:840–847.
108. Schoevers EJ, Fink-Gremmels J, Colenbrander B, Roelen BA: **Porcine oocytes are most vulnerable to the mycotoxin deoxynivalenol during formation of the meiotic spindle.** *Theriogenology* 2010, **74**:968–978.
109. Solak KA, Santos RR, van den Berg M, Blaauboer BJ, Roelen BA, van Duursen MB: **Narigenin (NAR) and 9-prenylnarigenin (8-PN) reduce the developmental competence of porcine oocytes in vitro.** *Reprod Toxicol* 2014, in press. doi:10.1016/j.reprotox.2014.05.013.
110. Tagaki M, Mukai S, Kuriyagawa T, Takagaki K, Uno S, Kokushi E, Otoi T, Budiayanto A, Shirasuna K, Miyamoto A, Kawamura O, Okamoto K, Deguchi E: **Detection of zearalenone and its metabolites in naturally contaminated follicular fluid by using LC/MS/MS and in vitro effects of zearalenone on oocyte maturation in cattle.** *Reprod Toxicol* 2008, **26**:164–169.
111. Minervini F, Dell'Aquila ME, Maritato F, Minoia P, Visconti A: **Toxic effects of the mycotoxin zearalenone and its derivatives on in vitro maturation of bovine oocytes and 17 beta-estradiol levels in mural granulosa cell cultures.** *Toxicol In Vitro* 2001, **15**:489–495.
112. Wang H, Camargo Rodriguez O, Memili F: **Mycotoxin alpha-zearalenol impairs the quality of preimplantation porcine embryos.** *J Reprod Dev* 2012, **58**:338–343.
113. Wang S, Panter KE, Holyoak GR, Molyneux RJ, Liu G, Evans RC, Bunch TD: **Development and viability of bovine preplacentation embryos treated with swainsonine in vitro.** *Anim Reprod Sci* 1999, **17**:19–29.
114. Gomez E, Royo LJ, Duque P, Carneiro G, Hidalgo C, Goyache F, Lorenzo PL, Alvarez I, Facal N, Díez C: **9-cis-Retinoic acid during in vitro maturation improves development of the bovine oocyte and increases midkine but not IGF-I expression in cumulus-granulosa cells.** *Mol Reprod Dev* 2003, **66**:247–255.
115. Jin Y, Lin X, Miao W, Wu T, Shen H, Chen S, Li Y, Pan Q, Fu Z: **Chronic exposure of mice to environmental endocrine-disrupting chemicals disturbs their energy metabolism.** *Toxicol Lett* 2014, **225**:392–400.
116. Ralston-Hooper KJ, Adamec J, Jannash A, Mollenhauer R, Ochoa-Acuña H, Sepúlveda MS: **Use of GC x GC/TOF-MS and LC/TOF-MS for metabolomics analysis of Hyalella Azteca chronically exposed to atrazine and its primary metabolite, desethylatrazine.** *J Appl Toxicol* 2011, **31**:399–410.
117. Albright VC, Coats JR: **Disposition of atrazine metabolites following uptake and degradation of atrazine in switchgrass.** *Int J Phytoremediation* 2014, **16**:62–72.
118. Barr DB, Ananth CV, Yan X, Lashley S, Smulian JC, Ledoux TA, Hore P, Robson MG: **Pesticide concentrations in maternal and umbilical cord sera and their relation to birth outcomes in a population of pregnant women and newborns in New Jersey.** *Sci Total Environ* 2010, **15**:790–795.
119. Morinaga H, Yanase T, Nomura M, Okabe T, Goto K, Harada N, Nawata H: **A benzimidazole fungicide, benomyl, and its metabolite, carbedazim, induce aromatase activity in a human ovarian granulosa-like tumor cell line (KGN).** *Endocrinology* 2004, **145**:1860–1869.
120. Mahalingaiah S, Missmer SA, Maity A, Williams PL, Meeker JD, Berry K, Ehrlich S, Perry MJ, Cramer DW, Hauser R: **Association of hexachlorobenzene (HCB), dichlorodiphenyltrichloroethane (DDT), and dichlorodiphenyltrichloroethylene (DDE) with in vitro fertilization (IVF) outcomes.** *Environ Health Perspect* 2012, **120**:316–320.
121. Uzumcu M, Zama AM, Oruc E: **Epigenetic mechanisms in the actions of endocrine-disrupting chemicals: gonadal effects and role in female reproduction.** *Reprod Domest Anim* 2012, **47**:338–347.
122. Krotz SP, Carson SA, Tomey C, Buster JE: **Phthalates and bisphenol do not accumulate in human follicular fluid.** *J Assist Reprod Genet* 2012, **29**:773–777.
123. Hart R, Doherty DA, Frederiksen H, Keelan JA, Hickey M, Sloboda D, Pennell CE, Newnham JP, Skakkebaek NE, Main KM: **The influence of antenatal exposure to phthalates on subsequent female reproductive development in adolescence: a pilot study.** *Reproduction* 2014, **147**:379–390.
124. Bastos AM, Souza Mdo C, Almeida Filho GL, Krauss TM, Pavesi T, Silva LE: **Organochlorine compound levels in fertile and infertile women from Rio de Janeiro, Brazil.** *Arq Bras Endocrinol Metabol* 2013, **57**:346–353.
125. Papadopoulou E, Caspersen IH, Kvale HE, Knutsen HK, Duarte-Salles T, Alexander J, Meltzer HM, Kogevinas M, Brantsaeter AL, Haugen M: **Maternal dietary intake of dioxins and polychlorinated biphenyls and birth size in the Norwegian mother and child cohort study (MoBa).** *Environ Int* 2013, **60**:209–216.
126. Vafeiadi M, Vrijheid M, Fthenou E, Chalkiadaki G, Rantakokko P, Kiviranta H, Kyrtopoulos SA, Chatzi L, Kogevinas M: **Persistent organic pollutants exposure during pregnancy, maternal gestational weight gain, and birth outcomes in the mother-child cohort in Crete, Greece (RHEA study).** *Environ Int* 2014, **64**:116–123.
127. Su PH, Huang PC, Lin CY, Ying TH, Chen JY, Wang SL: **The effect of in utero exposure to dioxins and polychlorinated biphenyls on reproductive development in eight year-old children.** *Environ Int* 2012, **39**:181–187.
128. Iavicoli I, Fontana L, Leso V, Bergamaschi A: **The effects of nanomaterials as endocrine disruptors.** *Int J Mol Sci* 2013, **14**:16732–16801.
129. Borden R, Lasche MW, Menger MD, Vollmar B: **Nicotine does not affect vascularization but inhibits growth of freely transplanted ovarian follicles by inducing granulosa cell apoptosis.** *Hum Reprod* 2006, **21**:610–617.
130. Zenzes MT, Krishnan S, Krishnan B, Zhang H, Casper RF: **Cadmium accumulation in follicular fluid of women in in vitro fertilization-embryo transfer is higher in smokers.** *Fertil Steril* 1995, **64**:599–603.
131. Neal MS, Zhu J, Foster WG: **Quantification of benzo[a]pyrene and other PAHs in the serum and follicular fluid of smokers versus non-smokers.** *Reprod Toxicol* 2008, **25**:100–106.
132. Fuentes A, Muñoz A, Pommer R, Argüello B, Galleguillos A, Torres A, Jesam C: **Decreased anti-Müllerian hormone concentration in follicular fluid of female smokers undergoing artificial reproductive techniques.** *Chemosphere* 2012, **88**:403–406.
133. Fowler PA, Childs AJ, Courant F, MacKenzie A, Rhind S, Antignac JP, Filis P, Evans F, Flannigan S, Maheshwari A, Bhattacharya S, Monteiro A, Anderson RA, O'Shaughnessy PJ: **In-utero exposure to cigarette smoke dysregulates**

- human fetal ovarian developmental signaling. *Hum Reprod* 2014, **29**:1471–1489.
134. Zenzes MT, Reed TE, Wang P, Klein J: **Cotinine, a major metabolite of nicotine, is detectable in follicular fluids of passive smokers in vitro fertilization therapy.** *Fertil Steril* 1996, **66**:614–619.
135. Benedict MD, Missmer SA, Vito AF, Cramer DW, Meeker JD: **Cotinine concentrations in follicular fluid as a measure of secondhand tobacco smoke exposure in women undergoing in vitro fertilization: inter-matrix comparisons with urine and temporal variability.** *Chemosphere* 2011, **84**:110–116.
136. Santos RR, Schoevers EJ, Roelen BAJ, Fink-Gremmels J: **Mycotoxins and female reproduction: in vitro approaches.** *World Mycotoxin J* 2013, **6**:245–253.
137. Petska JJ: **Deoxynivalenol: mechanisms of action, human exposure, and toxicological relevance.** *Arch Toxicol* 2010, **84**:663–679.
138. Cortinovis C, Pizzo F, Spicer LJ, Caloni F: **Fusarium mycotoxins: effects on reproductive function in domestic animals – review.** *Theriogenology* 2013, **80**:557–564.
139. Tiemann U, Tomek W, Schneider F, Müller M, Pöhland R, Vanselow J: **The mycotoxins alternariol and alternariol methyl ether negatively affect progesterone synthesis in porcine granulosa cells in vitro.** *Toxicol Lett* 2009, **186**:139–145.
140. Wätjen W, Debbab A, Hohlfeld A, Chovolou Y, Proksch P: **The mycotoxin beauvericin induces apoptotic cell death in H4IIE hepatoma cells accompanied by an inhibition of NF-κB-activity and modulation of MAP-kinases.** *Toxicol Lett* 2014, **231**:9–16.
141. Machtinger R, Combelles CM, Missmer SA, Correia KF, Williams P, Hauser R, Racowsky C: **Bisphenol-A and human oocyte maturation in vitro.** *Hum Reprod* 2013, **28**:2735–2745.
142. Peretz J, Vrooman L, Rieke WA, Hunt PA, Ehrlich S, Hauser R, Padmanabhan V, Taylor HS, Swan SH, VandeVoort CA, Flaws JA: **Bisphenol A and reproductive health: update of experimental and human evidence, 2007–2013.** *Environ Health Perspect* 2014, **122**:775–786.
143. Dinkins CL, Peterson RK: **A human dietary risk assessment associated with glycoalkaloid responses of potato to Colorado potato beetle defoliation.** *Food Chem Toxicol* 2008, **46**:2837–2840.
144. Taciak M, Tusno A, Pastuszewska B: **The effects of feeding diets containing potato protein concentrate on reproductive performance of rats and quality of the offspring.** *J Anim Physiol Anim Nutr* 2011, **95**:556–563.
145. Friedman M, Henika PR, Mackey BE: **Effect of feeding soladine, solasodine and tomatidine to non-pregnant and pregnant mice.** *Food Chem Toxicol* 2003, **41**:61–71.
146. Yoshida N, Mizuno K: **Effect of physiological levels of phytoestrogens on mouse oocyte maturation in vitro.** *Cytotechnology* 2012, **64**:241–247.
147. Kaludjerovic J, Chen J, Ward WE: **Early life exposure to genistein and daidzein disrupts structural development of reproductive organs in female mice.** *J Toxicol Environ Health A* 2012, **75**:649–660.
148. Jefferson WN, Patisaul HB, Williams CJ: **Reproductive consequences of developmental phytoestrogen exposure.** *Reproduction* 2012, **143**:247–260.
149. Chan-Hon-Tong A, Charles MA, Forhan A, Heude B, Sirot V: **Exposure to food contaminants during pregnancy.** *Sci Total Environ* 2013, **458–460**:27–35.
150. Kjaerstad MB, Taxvig C, Nellemann C, Vinggaard AM, Andersen HR: **Endocrine disrupting effects in vitro of conazole antifungals used as pesticides and pharmaceuticals.** *Reprod Toxicol* 2010, **30**:573–582.
151. Longo M, Zanoncelli S, Colombo PA, Harhay MO, Scandale I, Mackenzie C, Geary T, Madrill N, Mazué G: **Effects of the benzimidazole anthelmintic drug flubendazole on rat embryos in vitro.** *Reprod Toxicol* 2013, **36**:78–87.
152. Clark RL: **Embryotoxicity of the artemisinin antimalarials and potential consequences for use in women in the first trimester.** *Reprod Toxicol* 2009, **28**:285–296.
153. Hatch EE, Troisi R, Wise LA, Titus-Erntstoff L, Hyer M, Palmer JR, Strohssnitter WC, Robboy SJ, Anderson D, Kaufman R, Adam E, Hoover RN: **Preterm birth, fetal growth, and age at menarche among women exposed prenatally to diethylstilbestrol (DES).** *Reprod Toxicol* 2011, **31**:151–157.
154. Cassina M, Dilaghi A, Di Gianantonio E, Cesari E, De Santis M, Mannaioni G, Pistelli A, Clementi M: **Pregnancy outcome in women exposed to antiepileptic drugs: teratogenic role of maternal epilepsy and its pharmacologic treatment.** *Reprod Toxicol* 2013, **39**:50–57.
155. Roness H, Kalich-Philosoph L, Meirou D: **Prevention of chemotherapy-induced ovarian damage: possible roles for hormonal and non-hormonal attenuating agents.** *Hum Reprod Update* 2014, **20**:759–774.
156. Vela-Soria F, Ballesteros O, Zafra-Gómez A, Ballesteros L, Navalón A: **A new method for the determination of benzophenone-UV filters in human serum samples by dispersive liquid-liquid microextraction with liquid chromatography-tandem spectrometry.** *Talanta* 2014, **121**:97–104.
157. Nau H: **Embryotoxicity and teratogenicity of topical retinoic acid.** *Skin Pharmacol* 1993, **1**:35–44.
158. Tahaei LS, Eimani H, Yazdi PE, Ebrahimi B, Fathi R: **Effects of retinoic acid on maturation of immature mouse oocyte in the presence and absence of a granulosa cell co-culture system.** *J Assist Reprod Genet* 2011, **28**:553–558.
159. Sitarek K, Gromadzinska J, Lutz P, Stetkiewicz J, Swiercz R, Wasowicz W: **Fertility and developmental toxicity studies of diethylene glycol monobutyl ether (DGBE) in rats.** *Int J Occup Med Environ Health* 2012, **25**:404–417.
160. Roberts JR, Karr CJ: **Council on environmental health: pesticide exposure in children.** *Pediatrics* 2012, **130**:1765–1788.
161. Snijder CA, te Velde E, Roeleveld N, Burdorf A: **Occupational exposure to chemical substances and time to pregnancy: a systematic review.** *Hum Reprod Update* 2012, **18**:284–300.

doi:10.1186/1477-7827-12-117

Cite this article as: Santos *et al.*: Usefulness of bovine and porcine IVM/IVF models for reproductive toxicology. *Reproductive Biology and Endocrinology* 2014 **12**:117.

Submit your next manuscript to BioMed Central and take full advantage of:

- Convenient online submission
- Thorough peer review
- No space constraints or color figure charges
- Immediate publication on acceptance
- Inclusion in PubMed, CAS, Scopus and Google Scholar
- Research which is freely available for redistribution

Submit your manuscript at
www.biomedcentral.com/submit

