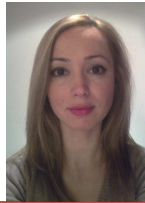


Assessment of the Impact of Climate Change on the Stocks and Fluxes of Toxicants and Pathogens at the River Basin Scale

M. Stergiadi¹, T. De Nijs², A. Sterk², M. Van Der Perk¹, M.F.P. Bierkens^{1,3}



Universiteit Utrecht

Corresponding author: m.stergiadi@uu.nl



National Institute for Public Health and the Environment
Ministry of Health, Welfare and Sport

1. BACKGROUND & OBJECTIVES

Anticipated climate change will most likely affect the concentration of contaminants in soil, groundwater and surface water, ultimately affecting the exposure of humans and ecosystems to these contaminants. *Aim* of this project is to assess the effects of climate change on the mobility and distribution of metals and pathogens at the catchment scale.

2. RIVER BASIN MODEL

A spatially distributed River Basin Model that integrates catchment-scale transport models will be developed. The River Basin Model will consist of modules describing the transfers and feedbacks between the environmental compartments soil, groundwater and surface water.

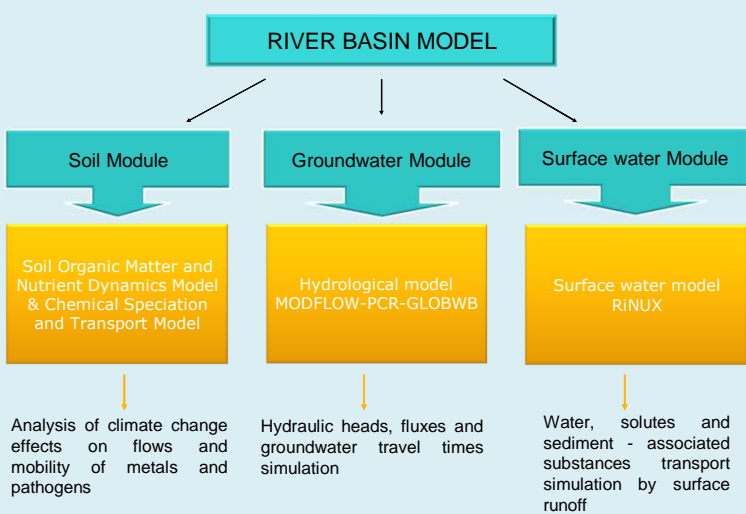
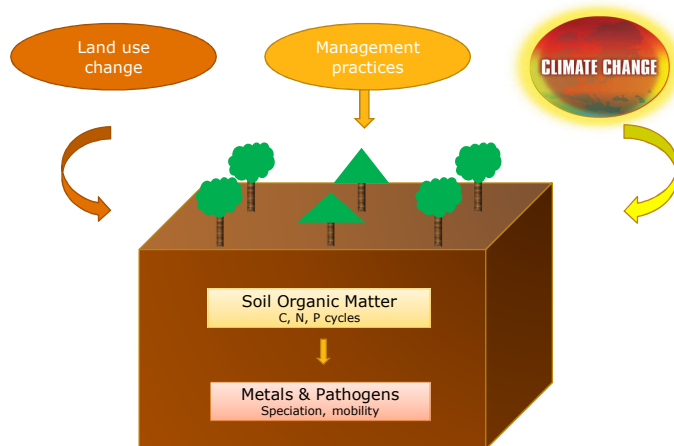


Figure 1: Schematic overview of the River Basin Model and the different environmental compartments

3. SOIL MODULE



Innovative aspect Development of a novel soil module to include the effects of changing soil organic matter content and composition on the speciation and transport pathways of contaminants.

A point-scale soil organic matter and nutrient dynamics model will be linked to a chemical speciation and transport model, in order to assess climate change effects on metals and pathogens in various soil types.

4. MODEL APPLICATION

To assess the impact of climate change and changes in land use on the future distribution of contaminant concentrations in the major exposure pathways to man and ecosystems, a selected number of scenarios addressing climate change, agricultural practices (land use change, land management), current policies and mitigation strategies, will be defined. For each scenario, the River Basin Model will be used to project the probability distributions of contaminant concentrations in soil, groundwater and surface water.

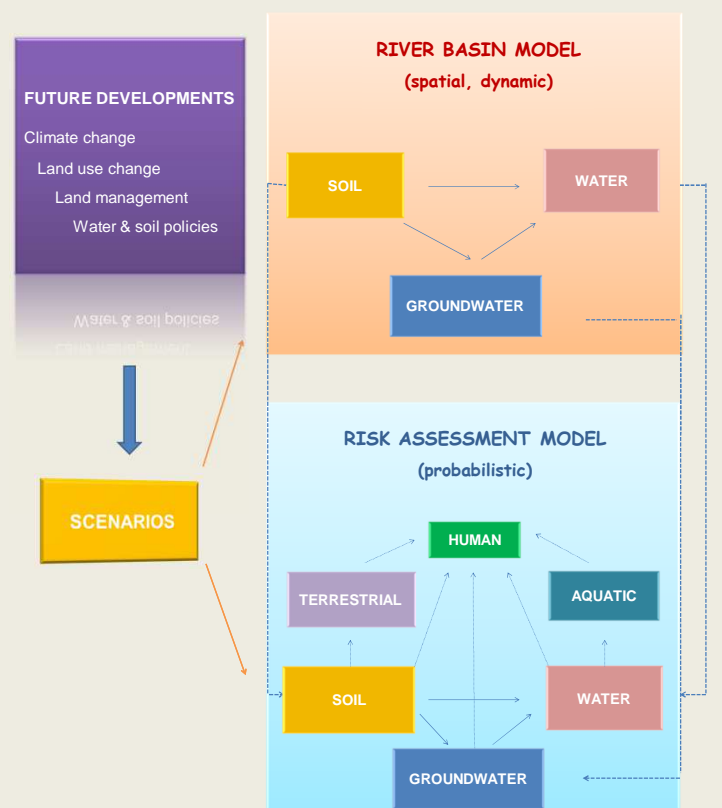


Figure 2: Schematic overview of the modelling framework

5. ANTICIPATED RESULTS & OUTLOOK

The River Basin Model will be tested in a moderately-sized river basin in the Netherlands and will feed input to a probabilistic risk assessment model that is being developed in a parallel project.

The results of the model will be included in the larger framework of the "Climate Cascades Project" which aims at assessing the impacts of toxic substances and pathogens on man and terrestrial and aquatic ecosystems that result from the effect of climate change on soil, groundwater and surface water at the river basin scale.

(1) Department of Physical Geography, Utrecht University, The Netherlands

(2) National Institute for Public Health and the Environment (RIVM), The Netherlands

(3) Unit Soil and Groundwater Systems, Deltares, The Netherlands



International Interdisciplinary Conference on
Land Use and Water Quality
Reducing Effects of Agriculture
The Hague, the Netherlands, 10-13 June 2013