


AUTHOR QUERY FORM

 ELSEVIER	Journal: RSSM	Please e-mail or fax your responses and any corrections to:
	Article Number: 112	E-mail: corrections.esil@elsevier.thomsondigital.com
	Fax: +353 6170 9272	

Dear Author,

Any queries or remarks that have arisen during the processing of your manuscript are listed below and highlighted by flags in the proof. Please check your proof carefully and mark all corrections at the appropriate place in the proof (e.g., by using on-screen annotation in the PDF file) or compile them in a separate list.

For correction or revision of any artwork, please consult <http://www.elsevier.com/artworkinstructions>.

Articles in Special Issues: Please ensure that the words ‘this issue’ are added (in the list and text) to any references to other articles in this Special Issue.

Uncited references: References that occur in the reference list but not in the text – please position each reference in the text or delete it from the list.	
Missing references: References listed below were noted in the text but are missing from the reference list – please make the list complete or remove the references from the text.	
Location in article	Query / remark Please insert your reply or correction at the corresponding line in the proof
Q1	Please ensure that affiliation is complete and accurate.
Q2	Please check the fax number of the corresponding author, and correct if necessary.
Q3	Ref. Van Poppel and Nelissen (1999) is cited in the text but not provided in the reference list. Please provide it in the reference list or delete this citation from the text.
Q4	Please note that Fig. 2 was not cited in the text. Please check that the citation suggested by the copyeditor is in the appropriate place, and correct if necessary.
Q5	Ref. Knippenberg (1986) is cited in the text but not provided in the reference list. Please provide it in the reference list or delete this citation from the text.
Q6	Ref. Landbouw (1872) is cited in the text but not provided in the reference list. Please provide it in the reference list or delete this citation from the text.
Q7	Ref. Van Leeuwen, Maas, and Miles (2002) is cited in the text but not provided in the reference list. Please provide it in the reference list or delete this citation from the text.
Q8	Ref. Péliissier et al. (2005) is cited in the text but not provided in the reference list. Please provide it in the reference list or delete this citation from the text.
Q9	Uncited references: This section comprises references that occur in the reference list but not in the body of the text. Please cite each reference in the text or, alternatively, delete it. Any reference not dealt with will be retained in this section.
Q10	Please check ‘Acknowledgements’.
Q11	Please verify the presentation of reference.
Q12	Please provide complete bibliographic details.

Electronic file usage

Sometimes we are unable to process the electronic file of your article and/or artwork. If this is the case, we have proceeded by:

Scanning (parts of) your article

Rekeying (parts of) your article

Scanning the artwork

Thank you for your assistance.



Assortative mating by occupational status during early industrialization

Richard L. Zijdeman*, Ineke Maas

Utrecht University, ICS, Department of Sociology, Utrecht University, Heidelberglaan 2, 3584 CS Utrecht, The Netherlands

Received 8 August 2008; received in revised form 16 June 2010; accepted 29 June 2010

Abstract

According to the logic of industrialism thesis during industrialization, the influence of, achieved characteristics on mate selection increased, while the influence of ascribed, characteristics decreased. Other processes that accompanied industrialization, such as, the development of mass communication, urbanization, increasing regional mobility, modern transport, and educational expansion, were hypothesized to break down, cultural differences and cause a decline of status based mate selection. This study, provides a first direct test of these hypotheses by analyzing a large dataset on, marriages in the Dutch province Zeeland between 1811 and 1915, a period before and, during industrialization. Industrialization and the other afore mentioned processes, were measured at the local level in each year of marriage, to take both local and, temporal variation into account. Using multilevel analyses it is shown that (1) the, influence of ascribed and achieved characteristics on status of the spouse differed, considerably between municipalities and changed over time, (2) the influence of, ascribed characteristics decreased, while the influence of achieved characteristics, remained unchanged, (3) the logic of industrialism thesis is supported, while, processes accompanying industrialization are less systematically related to changes in, ascription and achievement.

© 2010 Published by Elsevier Ltd on behalf of International Sociological Association Research Committee 28 on Social Stratification and Mobility.

Keywords: Homogamy; Industrialization; Status attainment; Context

1. Introduction

Over the past few decades, numerous researchers have studied the question of who marries whom (Kalmijn, 1998). This topic is of interest to social scientists and important to society because it enhances our understanding of the stratification of society. When high marries high and low marries low, there are strong barriers between status groups, and society can be con-

sidered socially closed. This is even more the case when characteristics determining partner choice are mainly ascribed and not achieved. In this case, the position in society of the future spouse can already be predicted at birth. Research shows that in recent marriage cohorts achieved characteristics (education for example) are more important predictors of marital choices than ascribed characteristics (father's occupational status for example) (Blau & Duncan, 1967; Kalmijn, 1991, 1994; Mare, 1991; Uunk, 1996). However, drawing on the industrialism thesis (Kerr, Dunlop, Harbison, & Myers, 1960; Treiman, 1970) one can conclude that in the past partner choices were predominantly affected by ascribed characteristics. Only when industrialization took place did societies become more open, barriers between sta-

Corresponding author. Tel.: +31 30 253 1967;

fax: +31 30 253 2101/253 4405.

E-mail addresses: r.l.zijdeman@uu.nl (R.L. Zijdeman),
i.maas@uu.nl (I. Maas).

tus groups become weaker, and achieved characteristics become more important.

This study investigates the validity of the claims that openness has increased by studying whether, and if so how, macro developments during early industrialization changed the process of partner selection in the Dutch province of Zeeland between 1811 and 1915. Focusing on the bridegroom, this chapter addresses the following questions: (1) To what extent did the occupational status of his father (ascribed characteristic) and his own occupational status (achieved characteristic) increase his likelihood of marrying a woman from a high-status group? (2) Did the influence of ascribed and achieved characteristics on partner selection differ between regions and periods? (3) To what extent can such differences be explained by macro processes such as industrialization, mass communication, and urbanization?

Theories concerning the effects of industrialization on status attainment were originally formulated in relation to attainment in the labor market, but they have since been extended to partner selection (Blau & Duncan, 1967; Uunk, 1996). With industrialization, labor markets and societal life changed. Industrialization can be defined as “the use of mechanical contrivances and inanimate energy (fossil fuels and water power) to replace or augment human power in the extraction, processing, and distribution of natural resources or products derived therefrom” (Davis, 1955, p. 255). It created many new occupations and changed the content of existing occupations. In industrial labor markets it became more rational for employers to select employees on the basis of achieved characteristics, such as the level of education, than on the basis of ascribed characteristics. Accordingly, achieved characteristics became more important predictors of an individual’s success on the labor market than ascribed characteristics. This has consequences for mate selection. One of the characteristics that potential mates value in each other is (future) economic success (Kalmijn, 1998, p. 502). In industrialized societies, ascribed characteristics should therefore be less important for mate selection and achieved characteristics more important, compared with preindustrialized societies (Blau & Duncan, 1967; Uunk, 1996).

Historical and sociological studies do not yet provide a definite answer to the question whether industrialization and its accompanying macro processes changed the importance of ascribed and achieved characteristics for the selection of a spouse. Historical studies addressing partner choice in the nineteenth and early twentieth centuries have often focused on partner characteristics other than occupational status, such as the age of the spouses or

the geographical distance between the spouses (Kalmijn, 1997; Nijch, 1986; Oris, 2000; Van Poppel and Nelissen, 1999; Van Poppel & Ekamper, 2005). Historical studies that do address the role of status attainment in partner selection tend to focus on a specific social group, a small region, or study a few points in time, making it difficult to generalize the research findings (Kocka, 1984; Lanzinger, 2005; Mitch, 1993; Schüren, 1993). Recent historical studies of marriage patterns, using log-linear analyses, do cover larger regions and longer periods, but they distinguish only a few periods and do not explicitly relate marriage choice to macro developments (Van Leeuwen & Maas, 2005). Sociological studies of homogamy more often study longer periods, larger regions, more variables, and a sample of the total population. However, their analyses seldom predate World War II, by which time the process of industrialization had been more or less completed in all Western countries (Smits, Ultee, & Lammers, 1998; Ultee & Luijkx, 1990).

The present study will improve on previous research in four ways. First, it investigates processes of partner selection in a Western country over a very long period, starting before the onset of industrialization and finishing when industrialization and its accompanying macro processes were advanced. In this way, the industrialism thesis can be tested on its home ground, i.e. during industrialization. Second, it distinguishes between local contexts within the province of Zeeland. This allows us to take into account the fact that macro-level developments such as industrialization did not occur throughout society at the same time. Some regions remained mainly agricultural long after industrialization had begun in other regions. Consequently, mate selection is expected to differ regionally, an expectation that has already found some support in research on occupational status attainment (Grusky, 1983; Zijdeman, 2008, 2009). Third, this study improves on previous research by relating several macro-level developments to the process of mate selection. Previous research has often been limited in the number of indicators it has used to characterize macro developments, while sometimes only time is used to indicate the development of industrialization and other macro processes. The macro-level developments that occurred in the nineteenth and early twentieth centuries have a more structural side, i.e. changes in the labor market that favor selection based on achieved characteristics, and a more cultural side, i.e. changes in human relations and values due to urbanization, educational expansion, mass communication, and mass transport (Craig, 1981; Garnier & Hage, 1991; Rijken, 1999; Treiman, 1970). Both aspects will be operationalized

and we will test which of the macro-level developments were more important in explaining processes of marital choice. We will refrain from using the term modernization when we refer to these macro-level developments. Theoretically, it is unclear what processes are considered to be part of modernization, and on what grounds. This makes it difficult to specify the mechanism behind modernization and to empirically test how modernization influences the processes of homogamy (Nettl & Robertson, 1966). Moreover, the term “modernization” often leads to a characterization of regions as either modern or traditional (Eisenstadt, 1974). Even studies that solve this issue by scaling the degree of modernization (Smits, Ultee, & Lammers, 2000) do not take into account differences in how advanced the separate modernization processes were. As a fourth improvement on previous research, this study utilizes a large dataset, including all marriages that took place among the total population of a large region encompassing over 100 municipalities over the course of more than a century. This will circumvent the selection problems encountered by previous studies and enable us to study macro-level changes and differences with sufficient power.

In the next section general notions about partner choice will be combined with the industrialism thesis to derive hypotheses on the changing effects of ascribed and achieved characteristics on partner choice. The hypotheses will be tested using data from all civil marriage records for the Dutch province of Zeeland in the period 1811–1915, supplemented by annual data on developments at the level of municipality, such as industrialization and urbanization. Using multilevel analyses this study will show whether the effects of one’s own and one’s father’s occupational status on the likelihood of marrying a high-status bride differed between regions

and periods. In a second step, we will explain these differences using data on macro-level developments.

2. Theories and hypotheses

Researchers interested in the effect of achieved and ascribed characteristics on marital choices in contemporary Western societies model marital choices in a symmetric way, taking into account both the characteristics of the bridegroom and those of the bride (Hendrickx, 1994; Kalmijn, 1991; Uunk, 1996). In the nineteenth and early twentieth centuries though the mate selection process was less symmetric. This was caused by the high likelihood of women ending their occupational career at marriage and their low likelihood of attaining a high-status occupation. As a consequence, their occupation at marriage was not a good predictor of the future economic success of the couple. The status of the father of the bride was a more important predictor of the couple’s economic success. High-status fathers could help the young couple with money, finding a house, and promoting the career of the son-in-law. We therefore model the mate selection process in the preindustrial and industrializing period as an asymmetrical process, omitting the status of the bride (Fig. 1) not because she did not play an active role in searching for a spouse, but because she often had no occupational status and, even if she had, it would hardly have affected the future economic success of the couple.

Ascribed and achieved characteristics of bride and groom are easy to distinguish in theory, but more difficult in this model. Whereas the association between the status of the father of the bridegroom and that of the father of the bride clearly reflects ascription, the association between the status of the groom and that of his father-in-law is a combination of ascription and achievement. This

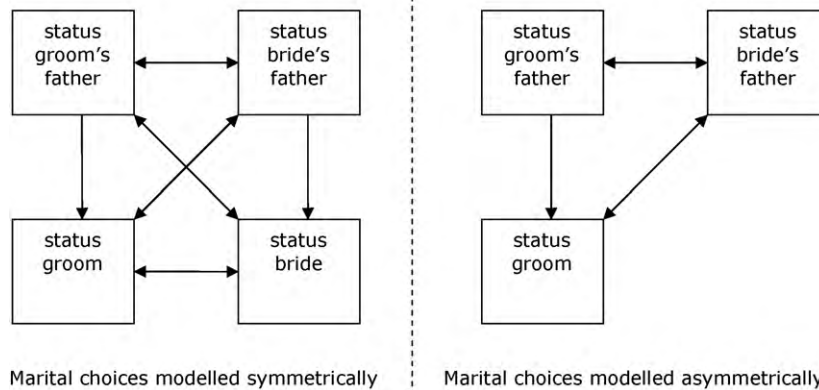


Fig. 1. Symmetric and asymmetric models of marital choice. Note: Single-headed arrows indicate causal relationships, double headed arrows indicate selection processes.

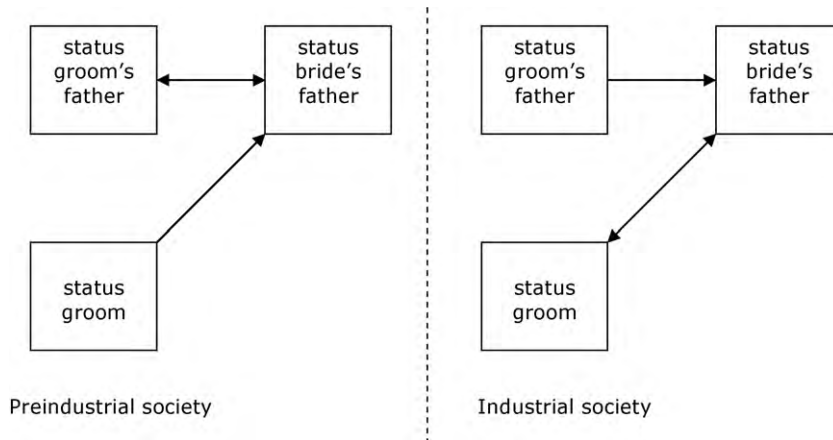



Fig. 2. Economic selection criteria with regard to marital choice in preindustrial and industrial societies. Note: Single-headed arrows indicate causal relationships, double headed arrows indicate selection processes.

217 association combines the effect of the achieved status of
218 the groom with that of the ascribed status of the bride.
219 In both cases, of course, these effects  describe selection
220 Q4 processes and not causal effects (Fig. 2).

2.1. Preferences, third parties, and the marriage market

223 The hypotheses on changes in the process of marital
224 selection will be derived both from general notions on
225 marital choice and from the industrialism thesis. Based
226 on the sociological literature, Kalmijn (1998) distin-
227 guishes three elements that determine the selection of
228 a marriage partner: (1) people's preferences concerning
229 the socioeconomic and cultural resources of the mar-
230 riage partner, (2) the influence of third parties, and (3)
231 the structure of the marriage market.

232 People's preferences for resources owned by potential
233 partners are important because, as in a market for goods
234 or jobs, a high demand for a particular resource increases
235 its value. As a result, potential spouses possessing this
236 popular resource are more desired than those who do
237 not. Given that these popular spouses are also looking
238 for popular resources, "the most attractive candidates
239 select among themselves, while the least attractive can-
240 didates have to rely on one another" (Kalmijn, 1998, p.
241 398). Kalmijn (1998) notes that people do not always
242 prefer more resources to fewer resources. He argues
243 that although people prefer partners with a larger quan-
244 tity of socioeconomic resources, with regard to cultural
245 resources they prefer partners similar to themselves.

246 A second element that plays an important part in
247 theories on marital choice is third-party (such as par-
248 ents, peers, Church) influence. Spouses share not only
249 personal resources, but also resources from their social

250 networks. Therefore, third parties have an interest in
251 ensuring that marriage does not corrode their pool of
252 resources. Although this seems beneficial for the spouse
253 as well, the individual preferences of the spouse and
254 third-party interests might collide. The more marriage
255 candidates depend on a third party (parents) and the more
256 they are integrated into a third party's social network
257 (such as the Church), the higher the probability of their
258 reconciling themselves to that third party's influence.

259 Selection of the marriage partner also depends on the
260 marriage market. The influence of the marriage market
261 is based on the notion that the more often one meets
262 individuals with a specific characteristic, the higher
263 the probability of selecting a marriage partner with
264 that particular characteristic. The probability of meeting
265 members of a group depends on several group charac-
266 teristics, such as the size and the geographical position-
267 ing of the group (Blau & Schwartz, 1984). Members of groups
268 that are larger and geographically more concentrated
269 are more likely to marry endogamously (Lieberson &
270 Waters, 1988).

271 The industrialism thesis argues that industrialization
272 and its accompanying macro processes have changed
273 the interplay between individual preferences, third-
274 party preferences, and the marriage market. In the next
275 sections, we will derive hypotheses from this thesis
276 concerning the effects of the status of parents and bride-
277 grooms on marital choices.

2.2. Effects of industrialization on partner selection: the industrialism thesis

280 According to the general notions on partner choice,
281 people have a preference for a partner with many eco-
282 nomic and similar cultural resources. Since marriage is

aimed at a long-lasting relationship, future marriage partners will have an interest not only in the current resources of the spouse, but also in the spouse's future resources. The quality and quantity of these future resources is uncertain (Oppenheimer, 1988). To decrease this uncertainty, people will look for proxies for future success (Kalmijn, 1991). According to the industrialism thesis, before industrialization the characteristics of the family of origin were especially good proxies for the spouse's future socioeconomic position. Sons would often eventually have similar occupations as their fathers. Some fathers would be able to pass on their own occupation directly to their sons. Others could help their sons in the local job market to attain an occupation with a status similar to that of their own. Often, daughters stopped working on marriage, if they had an occupation at all. Before industrialization, the occupational positions of the fathers of the bride and groom were therefore important indicators of the success of the bride and groom later in life.

The rise of industrialism changed the main indicator for the future socioeconomic position of the bridegroom. New and more diverse occupations emerged, making it more difficult for fathers to pass on the required occupational skills to their sons (Treiman, 1970). Instead, schools or firm-specific training programmes would provide the necessary skills, making the education and occupational status of the bridegroom rather than the occupational status of the groom's father the best proxy for future socioeconomic resources.

Industrialization also changed the influence of third parties, especially the parents. Before industrialization, the economic success of the children depended heavily on their parents. As a consequence, parental influence on the lives of their children, including their marital decisions, was considerable. Given the lack of a social security system to provide for them in old age, parents had an interest in promoting the future resources of their children by having them marry a member of a family at least as "good" as their own. Due to the new occupational opportunities created by the industrialization process, children became less economically dependent on their parents (Shorter, 1975). As a result, they were less inclined to concede to parental advice and preferences with respect to their future spouse.

To summarize, according to the industrialism thesis future socioeconomic success was a highly valued resource in a partner both before and after industrialization. Before industrialization, the best proxy for future success is the father's occupational position, and parental preferences mattered a great deal in partner choice. After early industrialization the best proxy for socioeconomic

success is the bridegroom's level of education and his achieved occupational status. The focus of a bride and her father therefore shifted from the groom's father to the groom. However, the focus of the groom and his father remained the occupational status of the bride's father (Fig. 3.2), since during early industrialization brides seldom had an occupational status that could be used as an indicator for future economic success. Thus the shift in the focus of the bride and her father decreased the association between the occupational status of both fathers, while increasing the association between the occupational status of the groom and that of the bride's father. We hypothesize:

Hypothesis 1a. The more industrialized a region or period, the weaker the association between the occupational status of the groom's father and that of the bride's father.

Hypothesis 1b. The more industrialized a region or period, the stronger the association between the occupational status of the groom and that of the bride's father.

2.3. Extensions of the industrialism thesis

Apart from industrialization, other macro processes such as migration and urbanization are hypothesized to influence the process of mate selection. However, while it is argued that industrialization changed economic preferences especially, it is also argued that the processes accompanying industrialization influenced cultural preferences and opportunities to meet in particular. Due to mass communication, urbanization, geographical mobility, educational expansion, and mass transport, people were increasingly confronted with elements (ideas, habits, individuals) from outside their own group (family, municipality, Church, or class), decreasing their orientation towards their own group and the influence of their own group. This led to a more open society by decreasing the influence of both ascription and achievement. More specifically, we test Treiman's hypotheses that (a) more pervasive mass communications, (b) greater urbanization, (c) increased geographical mobility, and (d) educational expansion "break down the rigidity of the class structure of traditional society, and thus [to] increase the ease of mobility" (Treiman, 1970, p. 219). In addition, this chapter provides a new hypothesis on the influence of means of mass transport on homogamy.

As a characteristic of modern societies, mass communication is said to develop a common culture and to decrease regional, ethnic, and class differences in attitudes and behavior (Treiman, 1970). Mass communication is able to "form historically new bases for

collective thought and action quickly, continuously and pervasively across previous boundaries of time, space and status” (Treiman, 1970, p. 219). We expect that due to mass communication the preference of a groom for marrying a bride from the same status group will decline. Not because his preference for a culturally similar spouse becomes less, but because the observed cultural differences between members of different status groups become smaller. Parents and other interested third parties, such as peers and neighbors, will also observe fewer cultural differences and therefore object less to marriages with someone with a different status (Gerbner, 1967). Urbanization and increased geographical mobility have the same effects as mass communication, but they are hypothesized to have changed processes of partner selection in other ways too. Treiman (1970) argues that people living in smaller communities are more easily helped (or hindered) by their parents, while people who move to a new area or who live in large cities have to depend on themselves. As a consequence, urban men and women on the marriage market are less affected by third parties in deciding whether to marry a partner with a high social status. Uunk adds that in large municipalities third parties, including parents, are less able to influence whom young people meet than in small municipalities (Uunk, 1996, p. 62). He also claims that urbanization caused an increasing number of people to grow up in more heterogeneous areas with regard to social status and education, creating opportunities for social mixing (Uunk, 1996, p. 62). Taken together, urbanization and geographical mobility seem to have decreased the influence of both ascribed and achieved characteristics on partner choice, although achieved characteristics were probably affected less.

Apart from these existing hypotheses, we derive a new hypothesis on the effects of means of mass transport. As is the case with urbanization and migration, transport increases people’s opportunities to escape from third-party influence and to meet people from other social and regional backgrounds. Transport, however, differs from urbanization and migration in that it allows a more gradual experience of what is outside the local community. People using transport for work or leisure experience what is outside their own group, even when living in less urbanized regions or in communities with low migration rates. Also, “outsiders” using transport “invade” local communities and allow the local population to experience different habits (such as clothing, manner of speech), changing their preferences and increasing their opportunities.

A last macro development that is hypothesized to increase people’s understanding of other groups and to

decrease their orientation towards their own group is the expansion of education. In the second half of the nineteenth century almost all children in the Netherlands attended primary school for at least a few years (Boonstra, 1993, 1995; Knippenberg, 1986). In 1863 a statutory education system was created that provided different types of secondary schooling for general and practical education (Bartels, 1963; Mandemakers, 1996). It is likely that these schools increased their pupils’ knowledge of the world outside their own municipality and thereby weakened their in-group preferences. Schools probably also increased opportunities to meet people from other social strata, although not directly people of the opposite sex. Only later, when tertiary education was expanded and opened up to women too, did universities become marriage markets coupling partners with the same achieved status (Blossfeld & Timm, 2003).

In sum, the arguments as to why macro processes accompanying industrialization affect homogamy focus on the cultural preferences of a spouse and/or on marriage markets. With the rise of a mass culture, people from different backgrounds become more alike, weakening the relationship between ascribed characteristics and a culturally similar other. Furthermore, due to increased opportunities to meet, people from different strata have a higher probability of meeting and potentially mating. While industrialization is argued to have actually changed the selection process, the processes accompanying industrialization merely weakened the selection based on status (Fig. 3). We therefore expect that:

Hypothesis 2a. The more mass communication, urbanization, migration, means of transport, and education in a region or period, the weaker the association between the occupational status of the groom’s father and that of the bride’s father.

Hypothesis 2b. The more mass communication, urbanization, migration, means of transport, and education in a region or period, the weaker the association between the occupational status of the groom and that of the bride’s father.

3. Area, data, measurements, and method

3.1. Area

The area under study is the Dutch province of Zeeland, situated in the southwest of the Netherlands and bordering the North Sea to the west and Belgium to the south. In the period being studied it consisted of two strips of land connected to the mainland north of Belgium

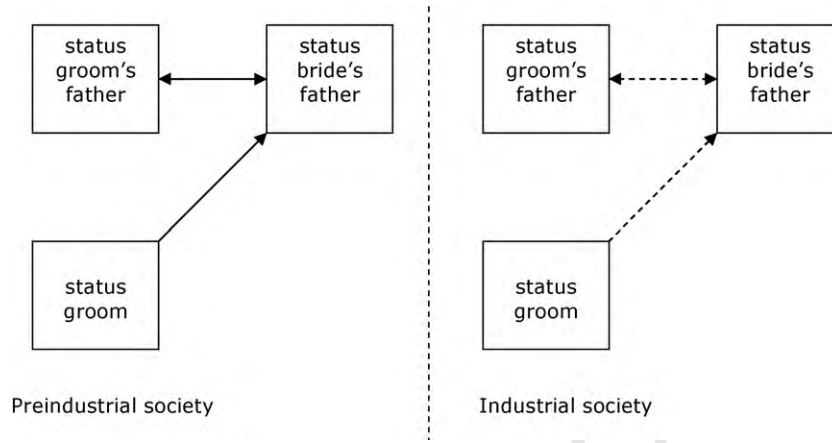


Fig. 3. Cultural selection with regard to marital choice in preindustrial and industrial societies. Note: Single-headed arrows indicate causal relationships, double headed arrows indicate selection processes. Dashed lines indicate weak selection, continuous lines indicate strong selection.

and to the southwest of the Netherlands and of about five inhabited small islands (the precise number changed over time). By reclaiming land from the sea through dykes and water management, several islets were merged and between 1817 and 1910 the area of land under cultivation in Zeeland increased from 311,833 to 366,259 acres (Priester, 1998, p. 446).

As a province, Zeeland can be characterized as largely agricultural. In the first half of the nineteenth century the main crop grown was wheat (Priester, 1998). Wheat being rather exhaustive for the clay soil, farmers chose from time to time either not to use their land or to grow other crops that were less exhaustive, such as rape-seed, common flax, rose madder, and sugar beet (Lewald, 1972; Knippenberg & De Pater, 2002; Landbouw, 1871, 1872). These other crops were grown mainly for trade, but by the end of the nineteenth century sugar beet and to a lesser extent common flax were grown on an increasingly large scale for the production of sugar and textiles, respectively, in factories in Zeeland (Franken, 2004; Priester, 1998). Given the large size of the agricultural sector and thus the large amount of manual labor required, it is remarkable how slowly the sector was mechanized and how slowly manual labor was replaced. Priester (1998) explains this by the special technique used in Zeeland to grow wheat, which involved thorough manual weeding. The extremely labor-intensive weeding resulted in clean sheaves for which there was a large demand throughout the country. However, the weeding required the wheat to be sown over a wide area, whereas the sowing machinery introduced from abroad sowed seeds in a concentrated fashion and row-wise. Also, thrashing machinery would damage too much of the scarce high-quality wheat and was therefore not used. Furthermore, the imported machinery designed for the

large farms in Britain and the United States was simply too large for Zeeland's farms or too heavy for the moist clay soil. Another problem was that the cost of purchasing machinery was too high to be beneficial for a single farmer. The cost of a steam plough was roughly four times the annual wage of an agricultural laborer (Van Zanden, 1992, p. 65).

Despite these difficulties, initiatives to acquire and use machinery in agriculture developed. While some farmers bought machines together and helped each other with sowing and harvesting, others bought a machine and employed personnel for hiring it out (Priester, 1998, p. 241). Also, the increasing demand from and better contracts provided by factories for large-scale production of crops such as sugar beet is likely to have stimulated the purchase of "modern" machinery by the growing number of large-scale farmers (Bakker, 1992; Priester, 1998, p. 245).

There was also increasing mechanization in the more urbanized municipalities in Zeeland, resulting in an expansion of the industrial sector. Alongside the flax and sugar industries mentioned above, various types of other industry were present in Zeeland, including ship-building, beer brewing, shoemaking, textiles, concrete production, and wood sawing (Franken, 2004). These factories were to be found not just in the two largest cities in Zeeland, Middelburg and Vlissingen (Flushing), but in various smaller municipalities as well (Franken, 2004).

Later on in the nineteenth century, mechanization extended further to the realm of transport. Between 1868 and 1872 the first four train stations in Zeeland were opened, although in the four decades after that this number did not increase. Zeeland's first steam tram arrived later, in 1882, but it proved a more successful means of mechanized transport. In 1915 there were more than

25 municipalities that could be reached by tram (Sluiter, 2002).

Apart from its agricultural character and the late development of mechanization, Zeeland was also characterized by regional differentiation with regard to land use, religion, and social differentiation, an observation confirmed by various historical accounts (Bouman, 1946; Bras & Kok, 2005; Priester, 1998).

In sum, characterizing Zeeland as a homogeneous agricultural province does not do justice to the various pockets of industrialization in the province. While some municipalities changed scarcely at all, others tried to adopt the technical developments taking place in agriculture, production, and transport. It is exactly this regional and temporal variation that makes Zeeland suited to testing our hypotheses.

3.2. Data

The hypotheses will be tested using data on marriages and annual data on macro processes such as industrialization and mass communication at the municipal level. The marriage data stem from all marriage records in Zeeland for the period 1811–1915 ($N = 143,890$).¹ These records are part of the Civil Records of Zeeland Database located at the Zeeuws Archief in Middelburg (the Netherlands). At the contextual level, information on six macro-level processes is derived from various sources. With regard to industrialization, information on steam engines was derived from the Registers of the Dutch Department for Steam Engineering, which are reports on the safety of steam engines (Lintsen & Nieuwkoop, 1989–1991).² The annual reviews on Dutch education, the *Verlagen van den Staat der Hooge-, Middelbare en Lagere Scholen*, for the period 1860–1915 were consulted for information on educational expansion

¹ We are grateful to L. Hollestelle for providing access to this dataset. The dataset encompasses 163,715 records of marriages in Zeeland in the period 1795–1923. The number of marriages before 1811 and after 1922 is extremely small compared with the data for 1811 and 1922, respectively, and we assume that the recording of marriages was incomplete both prior to 1811 and after 1922. Since most of the contextual data are available for the period up to 1915, we use the marriage records for the period 1811–1915 ($N = 143,890$). Due to changes in the names of municipalities, which affected 148 marriage records, no contextual information could be retrieved for those records. We thus use the data drawn from a total of 143,742 marriage records.

² The Registers of the Dutch Department for Steam Engineering are available through the Data Archiving and Networked Services at <http://www.dans.knaw.nl> [last accessed 10 February 2010]. We would like to thank H.W. Lintsen for making his data available for public use. A description of the registers can be found in Lintsen and Nieuwkoop (1989–1991).

(Scholen 1862–1917). Concerning communication, data on the presence of a post office in a municipality were derived from the *Verlagen aan den Koning betrekkelijk de Dienst der Posterijen en der Telegrafien* in 1879 for the period 1811–1879 and from the annual reviews 1880–1915 for subsequent years (Posterijen 1880–1916). To gain an insight in the availability of means of mass transport, data on the presence of railway and steam tram stations in a municipality were gathered from a study on Dutch tram and railway companies between 1881 and 1981 (Sluiter, 2002). Data on urbanization and migration were retrieved from the Historical Ecological Database (HED) (1851–1880 and 1900–1915), the Historical Database of Dutch Municipalities (1811–1850 and 1880–1900) and the Dutch Census (1851–1915). These sources also provide information on religious denomination at the municipal level.

3.3. Measurements

For a long time, an important issue in historical studies of social stratification was that of determining people's position in society. The use of an occupational title as an indicator of social position, as is common in present-day research, was criticized in historical research for a number of reasons. Occupational titles would provide too little information on a person's socioeconomic position (De Vries, 1986). Also, there would be confusion in occupational terminology "across time and space, within as well as between languages" (Van Leeuwen, Maas, and Miles, 2009). Further, extracting occupational titles from individual archive records is rather time consuming, limiting the focus of any research to a small number of municipalities or a short period of time. In the past, studies have dealt with these issues by using creative indicators of an individual's position in society, such as the location of their pew in church (Lucassen & Trienekens, 1978) or the level of taxes they paid (De Vries, 1986). Some historical studies did use occupational titles, but they tended to develop their own occupational scheme, making it difficult to compare studies with one another.

Over the past few decades, however, each of these issues has been tackled. By reporting a high correlation between mean income of occupations and the prestige of these occupations as measured by the prestige scale of Van Heek (1958), Mandemakers (1987) showed that, as in contemporary societies, historical occupational titles provide adequate information on social status. Furthermore, comparability of historical occupational titles between languages and over time has been achieved by the development of the Historical International Standard

Classification of Occupations (HISCO) (Van Leeuwen, Maas, & Miles, 2004). Based on ISCO-68 HISCO provides a classification of historical occupational titles based on occupational titles derived from 2.4 million personal records drawn from eight countries for the period 1692–1950 (Van Leeuwen et al., 2004). Also, historical research on status attainment is no longer bound to local regions or short periods. Numerous projects digitizing personal records (including marriage records) now provide information on occupational titles over longer periods and covering larger geographical areas. And finally, the development of a universal historical occupational stratification scale HIS-CAM (v.0.1) increases the comparability of studies of historical stratification (Lambert, Zijdeman, Maas, Prandy, & Van Leeuwen, 2006; Zijdeman & Lambert, 2010). For each occupational code in HISCO, HIS-CAM provides a score that represents the position of that occupation in the stratification structure. The theoretical scale scores range from 1 to 99. HIS-CAM is a historical version of the CAMSIS scales and as such assumes that the overall occupational stratification structure is represented by patterns of social interaction between people from different occupational strata (Bottero, 2005; Prandy, 2000; Prandy & Lambert, 2003; Stewart, Prandy, & Blackburn, 1980). This means that the more often people with a certain occupation interact, the closer these occupations will be to one another in the occupational stratification structure. To estimate the patterns of association, Goodman's RCII models are used (Goodman, 1979). The estimates are based on 1.5 million marriage records drawn from six countries (Britain, Canada, France, Germany, the Netherlands, and Sweden) and covering the period 1800–1938.

In order to assign HIS-CAM scores to the occupational titles of the Zeeland grooms, grooms' fathers, and brides' fathers, we first coded the occupations into HISCO. Unfortunately, not all marriage records provided accurate enough information on all three occupational titles. The 143,742 marriages yielded 72,138 (50.2%) coded occupations for brides' fathers, 65,211 (54.4%) for grooms' fathers, and 138,532 (96.4%) for grooms. The number of marriages for which all three status scores are available for the period 1811–1915 is 38,513 (26.8%). The large number of missing data is not surprising (Bras & Kok, 2005; Van de Putte, 2003). For example, in a study of the marriage records of 994 higher education students in 1880 and 1920, 54.8 percent of the occupations of grooms' fathers were omitted (Zijdeman & Mandemakers, 2008). A missing occupation might have meant that the father had no occupation (and no earnings), or that he had earnings from sources

other than work, such as property, or, most likely, that the parents were deceased. Delger and Kok (1998) argue that this potentially leads to bias in the data. Since the early death of fathers might be related to poor living and working conditions, and such conditions are generally more common among those with a low occupational status, the associations estimated will be more representative for those of higher than lower status. Furthermore, over time the number of fathers who deceased before their children married decreased. Thus in later periods the estimates are a better representation of the "actual" associations. However, recent studies of the Netherlands in the second half of the nineteenth and first half of the twentieth centuries find no relationship between social position and mortality rates. Van Poppel and Van Gaalen (2008) specifically address the relationship between social position and mortality in their study, and they find no such relationship for Dutch adult men born between 1850 and 1920.

To identify any possible bias due to the attrition of the occupation of grooms' father in our data, Fig. 4 depicts the proportion of missing occupations of grooms' fathers by occupational status of the groom for each decade between 1820 and 1910. The graph shows that the proportion of missing occupational titles of grooms' fathers was remarkably stable over time and hardly altered with the occupational status of the groom. In fact, if there is any tendency to be identified it is that the proportion of missing occupational titles increases rather than decreases with the grooms' occupational status. The large number of missing occupational titles of grooms' fathers is unfortunate, but it does not appear to be related to the occupational status of grooms. This matter is discussed further in section 5.

3.3.1. Dependent variable

The dependent variable in all analyses is the *occupational status of the bride's father*. It is constructed by assigning a HIS-CAM score corresponding to the occupation of the bride's father as registered on the marriage record of his daughter and son-in-law. HIS-CAM scores range from 1 to 100.

3.3.2. Independent variables

The independent variables used in the analyses are indicators at the individual as well as the contextual level. At the individual level the independent variables are:

Status of the groom's father: The occupational status of the groom's father is the HIS-CAM score of his occupation as registered on his son's marriage record. To enhance the interpretability of the results, the status of the groom's father is centered on the grand mean for the

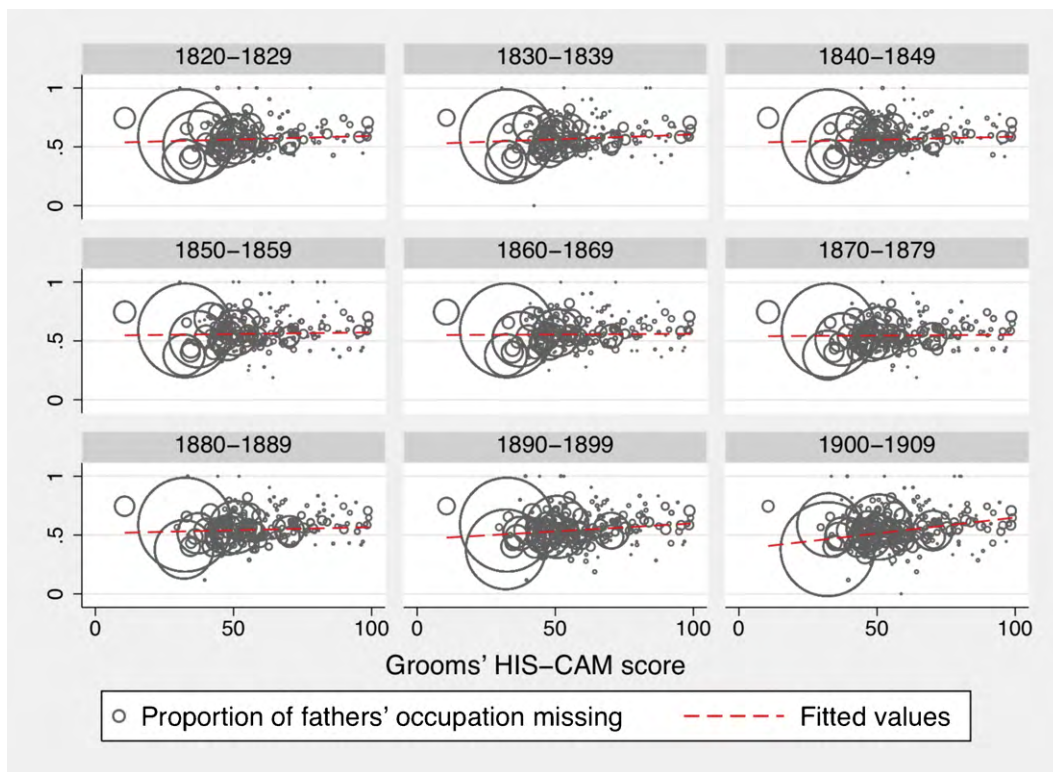


Fig. 4. Proportion of missing occupational titles of grooms' fathers by grooms' occupational status and decade. Note: The size of the circles indicates the number of grooms with a specific occupation.

739 period 1811–1915, i.e. the value of this variable is set to
740 zero for grooms' fathers who are of average status.

741 *Status of the groom:* The occupational status of the
742 groom is created by assigning a HIS-CAM score corre-
743 sponding to the occupation of the groom as registered on
744 his marriage record. The status of the groom is centered
745 on the grand mean for the period 1811–1915.

746 The contextual variables refer to the characteristics of
747 the municipality in the year of a groom's marriage. They
748 are:

749 *Industrialization:* To operationalize industrialization
750 we looked for an indicator that remains close to the def-
751 inition of industrialization as “mechanization of labor”.
752 The Registers of the Dutch Department for Steam Engi-
753 neering are one of the few data sources (if not the only)
754 that provide information on the mechanization of pro-
755 duction at a regional level over a longer period. The
756 registers provide an account of steam engines that were
757 checked for safety and reliability, and cover the period
758 up to 1890. It was not possible to calculate the actual vol-
759 ume of horsepower or number of steam engines in use
760 in the municipality in a certain year, because the regis-
761 ters do not provide detailed information on the capacity

of the machine nor on the period during which a steam
engine was in use. We have therefore used the number
of steam engines ever purchased in a given municipality.
To account for the fact that in larger municipalities there
was potentially more work that could be mechanized, we
relate the number of steam engines ever purchased to the
number of inhabitants in the municipality in the year of
marriage.

Mass communication: Newspapers were the main
mode of mass communication in the nineteenth century,
providing not only regional and, later on, national news,
but also information on developments in agricultural
machinery for example (Priester, 1998, p. 240). Fur-
thermore, newspapers provided an opportunity to place
advertisements. Apart from the commercial advertise-
ments placed by companies, there were also adverts for
domestic servants and contact ads placed by individuals
(Bras, 2002; Van Poppel & Ekamper, 2005). Unfortu-
nately, due to the large number of different newspapers,
it is not possible to count the number of newspapers dis-
tributed, nor, more importantly, to identify to whom they
were distributed. However, the delivery of newspapers
was directed through post offices. Furthermore, letters,

785 telegrams, and fashion brochures through which people
786 could learn of habits and fashion from regions other than
787 their own were distributed through the post offices. In the
788 absence of a more precise measure of mass communica-
789 tion we have therefore created a dichotomous variable,
790 indicating whether or not a post office existed in the
791 municipality and year of marriage.

792 *Urbanization:* Urbanization is measured by the size
793 of the population of the municipality of marriage in
794 the year of marriage. By combining the Historical
795 Ecological Database, the Historical Database of Dutch
796 Municipalities, and the Dutch Census, we were able
797 to obtain information on municipal population size
798 for every tenth year for the period 1811–1915. To be
799 able to include information from the marriage records
800 for those years for which data on urbanization was
801 missing, we derived estimates through linear interpola-
802 tion.

803 *Geographical mobility:* Geographical mobility is
804 indicated by the proportion of in-migrants to a munic-
805 ipality relative to the population of that municipality in the
806 year of marriage. Where no information on geographical
807 mobility could be obtained from the databases, estimates
808 of the number of in-migrants were derived in a manner
809 analogous to that for urbanization.

810 *Mass transport:* Mass transport is taken to refer to
811 mechanized transport such as cars, trains, and trams. Cars
812 appeared in the Netherlands at the end of the nineteenth
813 century, but archives report only national aggregates of
814 the number of motor vehicles, while regional accounts
815 cover only short time periods (Linders-Rooijendijk,
816 1989). Although there is a detailed account of Dutch rail-
817 way stations, only four cities in the province of Zeeland
818 had a railway station in the period under study (Sluiter,
819 2002). There was greater regional differentiation in the
820 case of tram stations. Although in contemporary soci-
821 ety trams are a means of transport within cities, in
822 Zeeland in the nineteenth century trams were chiefly
823 used to travel between cities. Lacking a detailed account
824 of the frequency with which trams journeyed between
825 cities, we created a dummy variable indicating the pres-
826 ence of a steam tram station or steam train station in
827 a municipality in the year of marriage. The steam tram
828 and steam train data are available for the entire period,
829 but the first steam train station in Zeeland was not
830 opened until 1868. Until 1915 no stations were closed in
831 Zeeland.

832 *Educational expansion:* As a measure of educational
833 expansion we use the number of students enrolled in
834 secondary education in the municipality and year of
835 marriage relative to the size of the population. In each
836 municipality and for every five years, we recorded

837 the number of students registered as full-time students
838 for all types of secondary education, including gymna-
839 sia students.³ For the years in between, we used
840 the same estimation procedure as that employed for
841 urbanization.

842 Several control variables will be included in the mod-
843 els. At the individual level these are:

844 *Groom's age:* Since occupational status tends to
845 increase over the life course, we control for the age of
846 the groom at marriage (mean centered). The data sources
847 provide no information on the age of the groom's father
848 or bride's father.

849 *Groom is a migrant:* This variable indicates whether
850 the groom's municipality of birth is different from the
851 municipality of marriage. It should be noted that this is
852 only an approximation of migration, since the munic-
853 ipality of marriage may not always correspond with the
854 place of residence at the time of marriage. Pélissier et
855 al. show in a study of nineteenth- and twentieth-century
856 France that migrants are more likely to marry a spouse
857 from a different social background (Pélissier et al. 2005).

858 *Bride is a migrant:* Similarly, we take into account
859 whether the bride's municipality of birth is different from
860 the municipality of marriage.

861 *Groom's mother deceased:* This is a dummy variable
862 indicating whether the groom's mother was deceased
863 before the marriage. This variable models differences
864 in mate selection due to the loss of parents (and thus due
865 to the loss of their influence; see Van Leeuwen & Maas,
866 2002, 2005). It is not possible to control for whether
867 the groom's or bride's father was deceased, because for
868 those fathers there is no information on occupational
869 status.

870 *Bride's mother deceased:* This variable indicates
871 whether the bride's mother was deceased before the mar-
872 riage.

873 *Groom was married before:* This dummy variable
874 indicates whether the groom married for a second or
875 consecutive time. In the literature several arguments
876 have been put forward claiming that people who remarry
877 might look for characteristics in a future spouse which
878 are different from those of their first spouse (Duberman,
879 1975; Jacobs & Furstenberg, 1986; Kalmijn, 1998). In
880 their study of the Netherlands between 1850 and 1940,
881 Van Leeuwen and Maas (2007) found that first marriages
882 were more homogamous with regard to age and literacy.

³ Although gymnasia students are recorded in the reviews of "higher education", we have included them because they were actually in secondary education preparing for higher education (Mandemakers, 1996).

Table 1
 Descriptive statistics of individual and contextual variables and group size.

Variable	Period	N	Mean	S.D.	Min	Max
Status of bride's father	1811–1915	38198	44.750	12.651	10.600	99.000
Status of groom's father (c)	1811–1915	38198	45.133	12.794	10.600	99.000
Status of groom (c)	1811–1915	38198	43.391	13.050	10.600	99.000
Groom's age (c)	1811–1915	38198	25.707	4.261	16.000	62.000
Groom's mother deceased	1811–1915	38198	0.305		0	1
Bride's mother deceased	1811–1915	38198	0.283		0	1
Groom is migrant	1811–1915	38198	0.505		0	1
Bride is migrant	1811–1915	38198	0.315		0	1
Groom was married before	1811–1915	38198	0.034		0	1
Bride was married before	1811–1915	38198	0.018		0	1
<i>Industrialization</i> : Steam engines (per 100 inhabitants)	1811–1890	6213	0.014	0.057	0.000	0.751
<i>Mass communication</i> : Post office	1811–1915	8791	0.107		0.000	1.000
<i>Urbanization</i> : Population (per 1000 inhabitants)	1811–1915	8791	1.800	2.327	0.103	21.973
<i>Mass transport</i> : Steam tram and/or railway station	1851–1915	8791	0.111		0	1
<i>Time</i> : Decade since 1800	1811–1915	8791	6.936	2.880	1.100	11.500
<i>Geographical mobility</i> : In-migrants (proportion)	1851–1915	6218	0.056	0.028	0.000	0.350
<i>Educational expansion</i> : Students (per 100 inhabitants)	1851–1915	6218	0.069	0.380	0.000	4.560
<i>Religious composition</i> : Protestants (proportion)	1851–1915	6218	0.778	0.331	0.000	1.000
<i>Group size</i> : Observations per group	1811–1915	8791	4.345	5.381	1.000	74.000

Note: N=Number of individuals in the case of individual characteristics, number of groups (municipalities × years) in the case of contextual characteristics. In the analyses, variables labelled (c) are centred around the mean of all available values of that variable.

Bride was married before: This is a dummy variable to indicate whether the bride married for a second or consecutive time.

Finally, at the contextual level we use religious composition and time as control variables for contextual processes that are not captured by our independent variables:

Religious composition: In the Netherlands between 1811 and 1915 there were about a dozen Protestant denominations. Almost everyone who was not affiliated to one of the various Protestant denominations belonged to the Catholic Church. Very few belonged to another denomination or were registered as not belonging to a Church. The main religious divide in the Netherlands was that between Protestants and Catholics. Our measure of religious composition is therefore the proportion of Protestants within a municipality and assumes that those who are not Protestant are Catholic.⁴ In years for which no information was available on religious composition, it was estimated using linear interpolation.

Decade: This is a continuous indicator of time, with a value of zero in 1800 increasing by 0.1 every year after 1800.

⁴ In a few cases the proportion of Protestants turned out to be somewhat larger than one, indicating some discrepancy within the census. In these instances the proportion of Protestants has been rounded down to 1.

An overview of the descriptive statistics of the variables is provided in Table 1.

3.4. Methods

To analyze the data we use hierarchical linear regression. This type of regression enables one to analyze clusters of data at the lower level(s). Furthermore, it allows the intercept and slopes to be variable across groups (Hox, 2002; Snijders & Bosker, 1999). In the analyses, individuals are nested in groups at a space × time level, meaning that a group is defined as all marriages in a municipality in a given year. In any given year the number of groups equals the number of municipalities where marriages occur, while the size of each group is determined by the number of marriages in a particular municipality in a given year. The group sizes thus vary between municipalities and over time. When group size varies and has a substantive meaning, it is advisable to control for group size (Snijders & Bosker, 1999). Since group size tends to be larger in larger municipalities, urbanization is used in each model as a control variable for group size.

The models consist of fixed effects and random effects for the intercept, the status of the groom and the status of the groom's father. A fixed effect represents the average across all groups (years and municipalities of marriage). It is referred to as "fixed", since, being an average, it is the same across all groups. In contrast to a fixed effect,

a random effect is allowed to vary between groups:

$$Y_{ij} = \gamma_0 + \gamma_1 x_{1ij} + \gamma_2 x_{2ij} + \gamma_3 x_3 + \dots + \gamma_k x_k + U_{0j} + U_{1j} x_{1ij} + U_{2j} x_{2ij} + R_{ij}$$

The first part of the model is the fixed part, the second part contains the random effects. Subscript i refers to an individual, whereas subscript j refers to a group: all individuals in a given municipality and year of marriage. For example, Y_{ij} , the dependent variable, is the status of a bride's father i in municipality and year of marriage j . γ_0 is the fixed part of the intercept. γ_1 is the fixed part of the effect of the status of a groom's father, x_{1ij} . γ_2 is the fixed part of the effect of a groom's status, x_{2ij} . γ_3 to γ_k are the fixed effects of x_3 to x_k , the other independent variables in the fixed part. These include variables at both levels and interaction effects. The random part of the model consists of the random intercept U_{0j} , and the random slopes U_{1j} and U_{2j} for the status of a groom's father and groom's status, respectively. R_{ij} is the residual at the individual level.

Since not all of the explanatory variables are available for 1811–1915, the analyses are divided over three time slots, represented in Tables 2–4. The models in Table 2 provide results for the entire period (1811–1915), but contain indicators only of macro processes that could be derived for this period. Table 3 provides a more in-depth look at the first part of the period, 1811–1890, by encompassing information on industrialization in the models. Table 4 applies to all macro processes discussed in this chapter, except industrialization, for the period 1851–1915. Each table contains a base model without contextual variables (except for urbanization) (Model 1), a “saturated” model with all available contextual characteristics (Model 2), and finally a “best fit” model (Model 3) based on the results of Model 2. In addition Table 2 contains an “empty” model (Model 0), to investigate how much of the variance in the occupational status of the bride's father is at the group level.

4. Results

4.1. Regional and temporal variation in achievement and ascription

Table 2 shows the effects of the occupational status of the groom's father and of the groom on the occupational status of the bride's father between 1811 and 1915.⁵

Before we test our hypotheses, we consider our claims that (1) the status of the bride's father varies between groups, and that (2) there are group-specific effects of the groom's father and the groom on the bride's father. From Model 0 it follows that the variance in the status of the bride's father at the group level is 13.598 (with a standard error of 0.745) and that the proportion of group variance relative to total variance is 0.086 (13.598/(145.232 + 13.598)).

There was indeed similarity with respect to occupational status between different individuals from the same group (year and municipality of marriage), although differences within groups were much larger than differences between groups. The constant indicates that across all groups the “average” groom married a bride whose father had a status score of 44.257. However, the significant effect of the random intercept shows that the average status of brides' fathers differed substantially between groups. According to the model, in some of the groups the “average” father-in-law had a status score as low as 36.882 (44.257 – 2√13.598, two standard deviations below the mean) and in some groups as high as 51.632 (two standard deviations above the mean).

Our second claim, that the effects of the groom's father and of the groom differ between groups, is supported as well. Model 1 distinguishes a linear change over time in these effects from additional, mainly regional, variance. The negative interaction effect between the status of the groom's father and decade in Model 1 implies that the effect of the status of the groom's father decreased over time. There is no indication that the effect of the groom's status changed linearly. As a result, the effects of the status of the groom's father and groom became more equal. Whereas in the early nineteenth century the effect of the status of the groom's father is about 1.5 times as large as the effect of the groom's status (0.440/0.279), according to this model in the beginning of the twentieth century the effect of the groom's occupational status was even slightly larger than that of the groom's father (0.245/0.279).

Besides the change in the effect of the groom's father's status over time, there is residual variance between groups in both the effect of the groom's father and of the groom. Although at first sight the variances in the random slopes seem small, the 95 percent interval values shows clear differences between groups in the effect of the status of the groom's father and the groom on the status of the bride's father. For example, according to

⁵ To improve readability, we describe the results for the associations between the occupational status of the bride's father, the groom's father,

and the groom in terms of “effects”. From a theoretical point of view it is more correct to refer to “associations” or “selection effects”.

Table 2
 Hierarchical linear regression of occupational status of bride’s father on individual and contextual characteristics, Zeeland, The Netherlands, 1811–1915 ($n = 38,198$).

	Model 0		Model 1		Model 2		Model 3	
	Coef.	S.E.	Coef.	S.E.	Coef.	S.E.	Coef.	S.E.
<i>Fixed effects</i>								
Constant	44.257*	.080	46.835*	.228	46.893*	.239	46.873*	.229
Status groom’s father			.440*	.019	.451*	.020	.461*	.019
Status groom			.279*	.020	.266*	.021	.267*	.020
Time			-.321*	.023	-.322*	.025	-.322*	.023
× status groom’s father			-.017*	.002	-.013*	.003	-.015*	.002
× status groom			.001*	.002	.001	.003	.000	.002
Urbanization			.153*	.014	.105*	.020	.117*	.019
× status groom’s father					-.001	.002		
× status groom					-.002	.002		
Mass communication					.426*	.195	.377*	.184
× status groom’s father					-.086*	.020	-.108*	.014
× status groom					.083*	.021	.066*	.014
Mass transport					.035	.173		
× status groom’s father					-.032	.018		
× status groom					-.012	.018		
Groom’s age			.038*	.013	.040*	.013	.040*	.013
Groom is migrant			.789*	.106	.781*	.106	.791*	.106
Bride is migrant			-.769*	.114	-.787*	.114	-.779*	.114
Groom’s mother deceased			-.453*	.120	-.452*	.120	-.454*	.120
Bride’s mother deceased			.858*	.122	.857*	.122	.856*	.122
Groom was married before			-1.984*	.310	-2.003*	.310	-1.994*	.310
Bride was married before			.887*	.404	.891*	.403	.886*	.403
<i>Random effects</i>								
<i>Level 2 random effects</i>								
Intercept	13.598*	.745	2.067*	.365	2.052*	.347	2.054*	.348
Status groom’s father			.038*	.003	.035*	.003	.036*	.003
Status groom			.040*	.004	.039*	.004	.039*	.004
<i>Level 1 variance</i>								
Intercept	145.232*	1.149	98.456*	.826	98.467*	.825	98.453*	.825
IGLS Deviance	301220.800	286566.700	286488.100	286500.100				

* Note: $p < 0.05$.

Model 1 in Table 2 in the upper 2.5 percent of the groups the effect of the status of the groom’s father was almost twice as large (0.830) as the average effect of the status of the groom’s father, while at the other extreme the effect was less than one-tenth of that (0.05). The 95 percent interval values for the groom’s occupational status show that in some groups the effect of the groom’s status was more than twice (0.679) the average effect, while in other groups the effect of the groom’s status was actually negative (-0.121).

In the following subsections we discuss to what extent indicators of industrialization and other macro-level developments account for differences between municipalities and over time in the effects of the status of the groom’s father and of the groom on the status of bride’s

father. This section ends with a brief discussion of the results with respect to the control variables.

With the exception of the models in Table 3 (1811–1890) all models show that older grooms had higher-status fathers-in-law. Grooms who married in a municipality different from that in which they were born married a bride from a higher-status family. In contrast, grooms marrying a bride in a municipality different from that in which she was born had lower-status fathers-in-law. If a groom married a bride whose mother was deceased he became related to a higher-status fathers-in-law. Grooms marrying for the first time had higher-status fathers-in-law than widowed grooms (or, far less likely, divorced grooms), while grooms marrying a “maiden” bride had on average lower-status fathers-in-law than

Table 3
Hierarchical linear regression of occupational status of bride's father on individual and contextual characteristics, Zeeland, The Netherlands, 1811–1890 ($n = 20,551$).

	Model 1		Model 2		Model 3	
	Coef.	S.E.	Coef.	S.E.	Coef.	S.E.
<i>Fixed effects</i>						
Constant	45.947*	.298	45.854*	.307	45.718*	.293
Status groom's father	.378*	.025	.391*	.026	.388*	.010
Status groom	.280*	.026	.285*	.028	.254*	.011
Time	-.220*	.038	-.196*	.040	-.178*	.037
× status groom's father	-.004	.004	.001	.004		
× status groom	.001	.004	-.004	.004		
Urbanization	.174	.021	.155*	.032	.174*	.032
× status groom's father			-.004	.003		
× status groom			-.005	.003		
Mass communication			.282	.288	.163	.285
× status groom's father			-.074*	.031	-.100*	.021
× status groom			.110*	.032	.081*	.022
Industrialization			-3.858*	1.497	-4.115*	1.484
× status groom's father			-.468*	.176	-.472*	.165
× status groom			.520*	.180	.462*	.170
Groom's age	-.024	.017	-.023	.017	-.024	.017
Groom is migrant	.877*	.142	.879*	.142	.879*	.142
Bride is migrant	-.846*	.150	-.840*	.150	-.836*	.150
Groom's mother deceased	-.287	.153	-.295	.152	-.288	.152
Bride's mother deceased	.933*	.154	.929*	.154	.928*	.154
Groom was married before	-1.400*	.364	-1.404*	.363	-1.389*	.363
Bride was married before	.953*	.461	.948*	.460	.964*	.460
<i>Random effects</i>						
<i>Level 2 random effects</i>						
Intercept	2.188*	.540	2.121*	.536	2.155*	.537
Status groom's father	.046*	.005	.043*	.005	.043*	.005
Status groom	.055*	.006	.053*	.006	.053*	.006
<i>Level 1 variance</i>						
Intercept	94.010*	1.125	94.063*	1.123	93.983*	1.123
IGLS Deviance	153581.900	153516.200	153525.300			

* Note: $p < 0.05$.

grooms marrying a widowed (or divorced) bride. Finally, Table 4 (1851–1915) shows that the influence of the occupational status of the groom's father on the status of the bride's father was larger in regions more Protestant than in regions more Catholic.

4.2. Mate selection and macro-level developments

The extent of industrialization is indicated by the number of steam engines per 100 inhabitants of a municipality in a certain year. Models 2 and 3 in Table 3 (1811–1890) clearly show that the effect of the occupational status of the groom's father on the status of the bride's father decreased, while the effect of the groom's status increased with industrialization. The predicted dif-

ferences in the effects are substantial. For example, the effect of the status of the groom's father on the bride's father in municipalities where there was one steam engine for every 250 inhabitants was almost half that of the figure for municipalities without steam engines $((.388 - .472 \times 0.4) / .388 = 0.513)$. Although this is a relatively high ratio of steam engines, from 1872 onwards there were five municipalities (Breskens, Hulst, Kerkwerf, Nieuwerkerk, and Sas van Gent) which had at least one steam engine for every 250 inhabitants. In those municipalities the effect of the groom's occupational status on the status of the bride's father was 1.7 times as large as that in municipalities with no steam engines $((.254 + .462 \times 0.4) / .254)$. The effects of the occupational status of the groom's father and of the groom

Table 4
 Hierarchical linear regression of occupational status of bride's father on individual and contextual characteristics, Zeeland, The Netherlands, 1851–1915 ($n = 31,736$).

	Model 1		Model 2		Model 3	
	Coef.	S.E.	Coef.	S.E.	Coef.	S.E.
<i>Fixed effects</i>						
Constant	48.212*	.356	47.696*	.444	47.673*	.414
Status groom's father	.597*	.035	.546*	.045	.582*	.042
Status groom	.239*	.036	.196*	.046	.210*	.042
Time	-.452*	.037	-.445*	.040	-.439*	.037
× status groom's father	-.033*	.004	-.031*	.004	-.033*	.004
× status groom	.006	.004	.006	.004	.007	.004
Urbanization	.150*	.015	.098*	.022	.110*	.021
× status groom's father			-.002	.002		
× status groom			-.001	.002		
Mass communication			.443*	.212	.470*	.202
× status groom's father			-.102*	.022	-.120*	.018
× status groom			.086*	.022	.081*	.018
Mass transport			.171	.181		
× status groom's father			-.032	.019		
× status groom			-.006	.019		
Educational expansion			-.036	.139	-.049	.138
× status groom's father			.023	.014	.015	.012
× status groom			-.027*	.013	-.030*	.012
Geographical mobility			2.129	2.598		
× status groom's father			.475	.268		
× status groom			.352	.274		
Religious composition			.583*	.224	.591*	.224
× status groom's father			.055*	.025	.051*	.025
× status groom			.002	.024	.001	.024
Groom's age	.055*	.015	.062*	.015	.062*	.015
Groom is migrant	.724*	.116	.724*	.118	.722*	.116
Bride is migrant	-.735*	.126	-.745*	.127	-.745*	.126
Groom's mother deceased	-.446*	.134	-.433*	.134	-.433*	.134
Bride's mother deceased	.667*	.137	.677*	.137	.675*	.137
Groom was married before	-1.948*	.362	-1.995*	.362	-1.988*	.362
Bride was married before	.772	.478	.753	.478	.761	.478
<i>Random effects</i>						
<i>Level 2 random effects</i>						
Intercept	1.840*	.360	1.786*	.357	1.802*	.358
Status groom's father	.034*	.004	.031*	.004	.032*	.004
Status groom	.034*	.004	.032*	.003	.032*	.004
<i>Level 1 variance</i>						
Intercept	99.345*	.901	99.360*	.900	99.351*	.900
IGLS Deviance	238101.000	238004.600	238023.000			

* Note: $p < 0.05$.

were equally large at an industrialization ratio of 0.135, i.e. one steam engine for every 740 inhabitants. About one-sixth of all municipalities in Zeeland reached this level of industrialization before 1890. In Middelburg and Vlissingen (Flushing), Zeeland's largest cities by far, with the largest number of steam engines ever pur-

chased, the ratio of steam engines to inhabitants never rose above 1:2000 and 1:2500, respectively.

More pervasive mass communication decreased the effect of the status of the groom's father on the status of the bride's father, while it increased the effect of the groom's occupational status between 1811 and

Table 5
 Correlation matrix of contextual variables ($N = 3640$).

	Industrialization	Mass communication	Urbanization	Geographical mobility	Mass transport	Educational expansion	Religious composition	Time
Industrialization	1.000							
Mass communication	0.235	1.000						
Urbanization	0.124	0.636	1.000					
Geographical mobility	0.080	0.031	-0.052	1.000				
Mass transport	0.190	0.304	0.303	0.090	1.000			
Educational expansion	0.130	0.490	0.576	0.020	0.333	1.000		
Religious composition	0.040	-0.090	-0.061	0.083	0.008	0.023	1.000	
Time	0.250	0.013	0.046	0.231	0.275	0.116	-0.034	1.000

1915 (models 2 and 3 in Tables 2–4). In municipalities with a post office the effect of the groom’s father was about 20 percent smaller than in municipalities that lacked this facility, while the effect of the groom’s status was about 35 percent larger. While the smaller influence of the groom’s father supports our hypothesis, the larger influence of the groom’s occupational status does not.

In models without other indicators for macro-level developments (not shown), urbanization affects the influence of the occupational status of the groom’s father and the groom in the same way as mass communication: it decreases the influence of the status of the groom’s father on the status of the bride’s father, while it increases the influence of the groom’s occupational status. There are, however, moderate to large correlations between urbanization on the one hand and mass communication, mass transport, and educational expansion on the other (Table 5). Once controlled for these other macro characteristics, population size does not affect the effects of the status of the groom’s father and of the status of the groom. These findings are consistent in all three tables. Although urbanization is hypothesized to directly influence the associations between the status of the groom’s father, groom, and bride’s father, it appears that the influence of urbanization is a derivative of other macro-level developments.

Data on geographical mobility measured as the ratio of in-migrants relative to the population are available only for the period 1851–1915 (Table 4, Model 2). Neither the interaction effect with the status of the groom’s father nor that with the status of the groom is significant. The expected negative influence of regional mobility on the effect of the status of the groom’s father and of the groom is not observed.

The availability of mass transport, indicated by the presence of a railway station or steam tram station, did not affect the influence of the occupational status of the groom’s father on that of the bride’s father. Although the effect is in the hypothesized direction, it is not signifi-

cant. Furthermore, the results do not support a decreasing influence of the groom’s occupational status due to mass transport (Tables 2 and 4).⁶

The sixth and final macro-level process we consider in this chapter is that of educational expansion (models 2 and 3 in Table 4). An increase in the number of students relative to the population does not decrease the effect of the occupational status of the groom’s father on the status of the bride’s father. This is contrary to our hypothesis. However, the decreasing effect of the groom’s occupational status on the status of the bride’s father is consistent with this theory. Substantially, this decrease is not very important. One standard deviation difference in the number of students in secondary education leads to a difference in the effect of the occupational status of the groom of .011 (.380 × .030) (Table 4).

5. Conclusion and discussion

In this study we have shown that the process of mate selection, and more precisely the importance of ascribed and achieved characteristics for marrying a woman with a high status, varied considerably over time and between regions in the long century in which the Dutch province of Zeeland industrialized. In general, grooms who either had a high occupational status themselves or came from a high-status family married higher-status brides. In some municipalities and in some years, however, the effects were much stronger than in other places and periods. Only in the case of the influence of the father could this variation partially be expressed as a linear decrease over time.

The first question to be addressed is whether this decrease might have resulted from the fact that not all

⁶ Mass transport is not included in the models for the period 1811–1890 because before 1890 very few municipalities had either a train or a tram station.

1168 marriages could be included in the analyses. As dis-
1169 cussed before, if either the father or the father-in-law had
1170 died before the marriage of their child, their occupational
1171 status would not have been recorded. Those marriages
1172 had to be excluded. It has been claimed that, especially
1173 at the beginning of the period of our study, death was
1174 common and not random. Higher-status fathers were
1175 more likely to survive until their children's marriage,
1176 while later in the nineteenth and twentieth centuries the
1177 association between status and survival became weaker.
1178 However, two recent studies, as well as our own results,
1179 indicate that in the Netherlands in the nineteenth and
1180 early twentieth centuries mortality rates were not related
1181 to social status. Nevertheless, the death of the father
1182 could have had (at least) two effects on mate selection.
1183 First, it is likely that the children of deceased fathers
1184 were at a disadvantage. They would marry lower-status
1185 partners than would be predicted on the basis of their
1186 own and their deceased father's status. This main effect
1187 of death should not bias our results, since it applies to
1188 the fathers of both brides and grooms. The exclusion of
1189 grooms with a deceased father made the regression line
1190 of the effect of the father's status on the father-in-law's
1191 status less steep; however, the exclusion of brides with a
1192 deceased father compensated for this bias.

1193 Secondly, the death of a father could cause the influ-
1194 ence of the status of the father to become weaker and the
1195 influence of the groom's own status to become stronger.
1196 Because the likelihood of an early death was greater
1197 at the beginning of the nineteenth century than dur-
1198 ing the twentieth century, this would lead to biased
1199 results. Leaving out grooms for whom the mate selec-
1200 tion process was hardly affected by their father's status
1201 and strongly affected by their own status would lead
1202 to an overestimate of the effect of the father's status
1203 and an underestimate of the effect of the groom's sta-
1204 tus. The linear decrease over time in the importance
1205 of the father's status might thus have been caused by
1206 the decrease in early deaths among the fathers. How-
1207 ever, the fact that there is no evidence of an increase in
1208 the importance of the groom's status over time is not
1209 consistent with this explanation. Furthermore, even if
1210 the complete change over time in the parental effect is
1211 due to the selection of deceased fathers, this still does
1212 not much affect our conclusions. All models include
1213 both interactions of ascribed and achieved characteristics
1214 with time and interactions with indicators of industrial-
1215 ization and accompanying macro-level processes. It is
1216 very unlikely that the survival rate of men was directly
1217 related to regional variations in industrialization, mass
1218 communication, or any other macro-level process. We
1219 will therefore assume that, even if the linear trend was

1220 caused by selection, conclusions about the effects of
1221 the indicators of industrialization and the accompanying
1222 macro-level processes are sound.

1223 We tested a series of hypotheses to explain the varia-
1224 tion in the importance of the father's and groom's status
1225 for mate selection. The hypothesis that has been central
1226 in the literature on this topic is the industrialism the-
1227 sis, according to which industrialization caused ascribed
1228 characteristics to become less important and achieved
1229 characteristics to become more important for partner
1230 choice. For the first time, this hypothesis has been tested
1231 on a large-scale dataset, with reference to the period
1232 before and during industrialization and with explicit
1233 measurement of regional and temporal variations in
1234 industrialization. The findings support the industrialism
1235 thesis. With increasing industrialization (1) the associ-
1236 ation between the occupational status of the groom's
1237 and the bride's father decreased, while (2) the associ-
1238 ation between the status of the groom and that of the
1239 bride's father increased. The latter association is a com-
1240 bination of selection on achieved characteristics (status
1241 of the groom) and ascribed characteristics (status of the
1242 bride's father). The actual increase in the importance
1243 of achieved characteristics was, thus, probably stronger
1244 than the change in this association shows.

1245 Macro-level processes other than industrialization
1246 were hypothesized to make both ascribed and achieved
1247 characteristics less important for mate selection because
1248 of a decline in the orientation towards one's own group.
1249 Mass communication, urbanization, regional mobility,
1250 the development of mass transport, and educational
1251 expansion would promote the development of a com-
1252 mon culture and decrease regional, ethnic, and class
1253 differences in attitudes and behavior. These hypothe-
1254 ses do not find much support. Only the development
1255 of mass communication led to a decrease in the effect
1256 of the father's status, whereas educational expansion
1257 decreased the effect of the status of the groom. Oppos-
1258 ing effects are found just as often. With the development
1259 of mass communication the effect of the groom's status
1260 became more important, while the rise of mass trans-
1261 port and urbanization and increasing regional mobility
1262 do not seem to be related to processes of mate selection.
1263 One possible explanation for these mixed findings is that
1264 mass transport and communication not only enhanced
1265 the opportunities to meet dissimilar others but also pro-
1266 vided new opportunities to meet and interact with similar
1267 others. Besides, the sheer presence of means of mass
1268 transport does not mean that the whole population, or
1269 even large parts of the population, used these means to
1270 the same degree. If only a small part of the population,
1271 probably the elite, took advantage of the new possibili-

ties, the effect on marriage behavior may be too small to observe.

Taken together, our results show that the Dutch marriage market did not open up during industrialization. Processes accompanying industrialization did not ‘break down’ the rigidity of the class structure of traditional society’ as Treiman suggested (Treiman, 1970, p. 210, italics are ours). Although it has often been argued that contact with dissimilar others decreases prejudice and increases mutual understanding, we do not find support for such mechanisms in the Dutch society during the 19th century. Although tremendous changes took place in the possibilities to get to know people from other status groups, this did not lead to a general decrease in the importance of status while selecting a spouse.

However, at the same time, we do observe a shift from ascription to achievement in the marriage market. In line with the industrialism thesis women select their spouse increasingly on the basis of his own achievement instead of the status of his father. This is generally interpreted as ‘more fair’ than assortative mating on the basis of ascription. However, since husband’s status also replaces father’s status as best predictor of a couple’s resources, economic inequality between households did probably not diminish.

Q9 Uncited references

Beekink, Boonstra, Engelen, and Knippenberg (2003), Dronkers and De Graaf (1995), Hoogerhuis and Jansen (1987), Inglehart and Baker (2000), Maas, Lambert, Zijdeman, Prandy, and Van Leeuwen (2006), Nauta (1987), Smits (1996), Thornton, Axinn, and Hill (1992), Van Leeuwen, Maas, and Miles (2005), and Van Poppel, Ekamper, and Nelissen (1999).

Q10 Acknowledgements

This study was made possible by a research grant from the Netherlands Organization for Scientific Research (NWO) for the project ‘Status Attainment during Industrialization, Life Courses in Context’ (Free Competition in the Humanities, project no. 400-05-054). We are grateful to Vincent Buskens, Jeroen Weesie, and the members of the Migration and Social Stratification seminar and the ISOL seminar for their comments.

References

Bakker, M. S. C. (1992). Voeding in Nederland. In *Geschiedenis van de Techniek in Nederland*, vol. 1. Zutphen: Walburg Pers.

- Bartels, A. (1963). *Een Eeuw Middelbaar Onderwijs 1863-1963*. Groningen: Wolters. 1317
1318
- Beekink, E., Boonstra, O., Engelen, T., & Knippenberg, H. (Eds.). (2003). *Nederland in Verandering. Maatschappelijke Ontwikkelingen in Kaart Gebracht*. Amsterdam: Aksant. 1319
1320
- Blau, P. M., & Duncan, O. D. (1967). *The American occupational structure*. New York: John Wiley and Sons. 1321
1322
- Blau, P. M., & Schwartz, J. E. (1984). *Cross cutting social circles: Testing a macrostructural theory of intergroup relations*. Academic Press. 1323
1324
1325
1326
- Blossfeld, H. P., & Timm, A. (2003). *Who marries whom? Educational systems as marriage markets in modern societies. A Comparison of thirteen countries. European studies of population*. Dordrecht: Kluwer Academic Publishers. 1327
1328
1329
1330
- Boonstra, O. W. A. (1993). *De Waardij van eene vroege Opleiding. Een Onderzoek naar de Implicaties van het Alfabetisme op het Leven van Inwoners van Eindhoven en Omliggende Gemeenten, 1800-1920. Ph.D. thesis*. Wageningen University. 1331
1332
1333
1334
- Boonstra, O. W. A. (1995). *Het Einde van het Analfabetisme in Nederland*. In K. Mandemakers, & O. Boonstra (Eds.), *De Levensloop van de Utrechtse Bevolking in de Negentiende Eeuw* (pp. 68–85). Assen: Van Gorcum. 1335
1336
1337
1338
- Bottero, W. (2005). *Stratification: Social division and inequality*. London: Routledge. 1339
1340
- Bouman, P. J. (1946). *Geschiedenis van den Zeeuwschen Landbouw in den Negentiende en Twintigste Eeuw en van de Zeeuwsche Landbouw-Maatschappij, 1843-1943*. Wageningen. 1341
1342
1343
- Bras, H. (2002). *Zeeuwse meiden. Dienen in de Levensloop van Vrouwen, ca. 1850-1950*. Amsterdam: Aksant Academic Publishers. 1344
1345
1346
- Bras, H. & Kok, J. (2005). ‘They live in indifference together’: Marriage mobility in Zeeland, The Netherlands, 1796-1922. In M. H. D. Van Leeuwen, I. Maas, & A. Miles (Eds.), *Marriage choices and class boundaries: Social endogamy in history* (pp. 181–211). Cambridge University Press. 1347
1348
1349
1350
1351
- Craig, J. E. (1981). *The expansion of education*. In D. C. Berliner (Ed.), *Review of research in education* (pp. 151–213). Washington, D.C.: American Education Research Association. 1352
1353
1354
- Davis, K. (1955). *Social and demographic aspects of economic development in India*. In E. W. Moore, S. Kuznets, & J. J. Spengler (Eds.), *Economic growth: Brazil, India, Japan, Durham* (pp. 263–315). N.C.: Duke University Press. 1355
1356
1357
1358
- De Vries, B. (1986). *Electoraat en elite. Gemeentelijke Archiefdienst van Amsterdam/De Bataafsche Leeuw*. 1359
1360
- Delger, H., & Kok, J. (1998). *Bridegrooms and biases. Historical Methods, 31*, 113–121. 1361
1362
- Dronkers, J., & De Graaf, P. M. (1995). *Ouders en het onderwijs van hun kinderen*. In J. Dronkers, & W. C. Ultee (Eds.), *Verschuivende ongelijkheid in Nederland* (pp. 263–315). Assen: Van Gorcum. 1363
1364
1365
- Duberman, L. (1975). *The reconstituted family: A study of remarried couples and their children*. Chicago: Nelson-Hal. 1366
1367
- Eisenstadt, S. N. (1974). *Studies of modernization and social theory. History and Theory, 13*, 225–252. 1368
1369
- Franken, A. F. (2004). *Op Stoom! Industrieel erfgoed in Zeeland (1850-1970)*, volume 13 of *Cultuurhistorische Reeks Provincie Zeeland*. Middelburg: Provincie Zeeland. 1370
1371
1372
- Garnier, M. A., & Hage, J. (1991). *Class, gender, and school expansion in France: A four-system comparison. Sociology of Education, 64*, 229–250. 1373
1374
1375
- Gerbner, G. (1967). *Mass media and human communication theory*. In F. E. X. Dance (Ed.), *Human communication theory* (pp. 40–57). Holt, Rinehart & Winston. 1376
1377
1378

- 1379 Goodman, L. A. (1979). Simple models for the analysis of association
1380 in cross-classifications having ordered categories. *Journal of the*
1381 *American Statistical Association*, 74, 537–552.
- 1382 Grusky, D. B. (1983). Industrialization and the status attainment
1383 process: The thesis of industrialism reconsidered. *American Soci-*
1384 *ological Review*, 48, 494–506.
- 1385 Hendrickx, J. (1994). *The analysis of religious assortative marriage.*
1386 *Ph.D. thesis.* University of Nijmegen.
- 1387 Hoekveld, G. A. (1972). Nederland in West-Europa. In G. A. Hoekveld,
1388 & P. Schat (Eds.), *Geografische Verkenningen* (pp. 186–229). Roer-
1389 mond: Romen.
- 1390 Hoogerhuis, O. W., & Jansen, L. F. S. (1987). Analfabetisme en Onder-
1391 wijsdeelnemers in Goes gedurende de 19e eeuw. *Historisch Jaarboek*
1392 *voor Zuid- en Noord-Beveland*, 5–37.
- 1393 Hox, J. (2002). *Multilevel analysis, techniques and applications.* Mah-
1394 wah, New Jersey: Lawrence Erlbaum Associates, Publishers.
- 1395 Lintsen, H. W., & Nieuwkoop, J. A. W. (1989–1991). *De Registers van de*
1396 *Dienst voor het Stoomwezen Amsterdam*: NEHA.
- 1397 Inglehart, R., & Baker, W. E. (2000). Modernization, cultural change
1398 and the persistence of traditional values. *American Sociological*
1399 *Review*, 65, 19–51.
- 1400 Jacobs, J. J., & Furstenberg, F. F. (1986). Changing places: Conjugal
1401 careers and women's marital mobility. *Social Forces*, 64, 714–732.
- 1402 Kalmijn, M. (1991). Status homogamy in the United States. *The American*
1403 *Journal of Sociology*, 97, 496–523.
- 1404 Kalmijn, M. (1994). Assortative mating by cultural and economic
1405 occupational status. *American Journal of Sociology*, 100, 422–452.
- 1406 Kalmijn, M. (1995). Bruid, Bruidegom en Bruiloft: Sociale en
1407 Economische Achtergronden van het Huwelijkspatroon. In K.
1408 Mandemakers, & O. Boonstra (Eds.), *De Levensloop van de*
1409 *Utrechtse Bevolking in de Negentiende Eeuw* (pp. 68–85). Assen:
1410 Van Gorcum.
- 1411 Kalmijn, M. (1998). Inter-marriage and homogamy: Causes, patterns,
1412 trends. *Annual Review of Sociology*, 24, 395–421.
- 1413 Kerr, C., Dunlop, J. T., Harbison, F. H., & Myers, C. A. (1960).
1414 *Industrialism and industrial man. The problems of labor and man-*
1415 *agement in economic growth.* Cambridge, Massachusetts: Harvard
1416 University Press.
- 1417 Knippenberg, H., & De Pater, B. (2002). (1998 (2002)) *De Eenwording*
1418 *van Nederland. Schaalvergroting en Integratie sinds 1800* (sixth
1419 edition). Nijmegen: SUN.
- 1420 Kocka, J. (1984). Family and class formation: Intergenerational mobil-
1421 ity and marriage patterns in nineteenth-century Westphalian towns.
1422 *Journal of Social History*, 17, 411–433.
- 1423 Lambert, P. S., Zijdeman, R. L., Maas, I., Prandy, K., & Van Leeuwen,
1424 M. H. D. (2006). Testing the universality of historical occupational
1425 stratification structures across time and space. *Paper presented to*
1426 *the ISA RC 28 Social Stratification and Mobility spring meeting,*
1427 *Nijmegen.*
- 1428 Lanzinger, M. (2005). Homogamy in a Society orientated towards
1429 stability: A micro-study of a South Tyrolean market town,
1430 1700–1900. In M. H. D. Van Leeuwen & I. Maas (Eds.), *Mar-*
1431 *riage choices and class boundaries: Social endogamy in history.*
1432 *Volume 50 of IRSH Supplement* (pp. 123–148). Cambridge:
1433 University Press.
- 1434 Lieberman, Stanley, & Waters, Mary. (1988). *From many strands: Eth-*
1435 *nic and racial groups in contemporary America.* Russel Sage.
- 1436 Linders-Rooijendijk, M. F. A. (1989). Gebaande Wegen voor
1437 Mobiliteit en Vrijtijdsbesteding. De ANWB als Vrijwillige Assoc-
1438 iatie, 1883–1927. *Ph.D. thesis.* Katholieke Universiteit Brabant.
- 1439 Lucassen, J., & Trienekens, G. (1978). Om de Plaats in de Kerk.
1440 *Tijdschrift voor Sociale Geschiedenis*, 4, 239–304.
- Lynch, K. A. (1986). Marriage age among French factory workers:
1441 An Alsatian example. *Journal of Interdisciplinary History*, 16,
1442 405–429.
- 1443 Maas, I., Lambert, P. S., Zijdeman, R. L., Prandy, K., & Van Leeuwen,
1444 M. H. D. (2006). HIS-CAM. The derivation then implementation of
1445 an historical occupational stratification scale. In *Paper presented*
1446 *to the Sixth European Social Science History Conference RAI,*
1447 *Amsterdam,*
- 1448 Mandemakers, K. (1987). Aanzet tot een Beroepsstratificatie voor Ned-
1449 erland omstreeks 1900, Tiel 1884 en 1918. *Tijdschrift voor Sociale*
1450 *Geschiedenis*, 13, 198–222.
- 1451 Mandemakers, K. (1996). *HBS en Gymnasium. Ontwikkeling, Struc-*
1452 *tuur, Sociale Achtergrond en Schoolprestaties, Nederland ca.*
1453 *1800–1968. volume 24 of IISG Studies + Essays.* Amsterdam:
1454 Stichting Beheer IISG.
- 1455 Mare, R. D. (1991). Five decades of educational assortative mating.
1456 *American Sociological Review*, 56, 15–32.
- 1457 Mitch, D. (1993). 'Inequalities which everyone may remove': Occu-
1458 pational recruitment, endogamy, and the homogeneity of social
1459 origins in Victorian England. In A. Miles & D. Vincent, *Building*
1460 *European Society* (pp. 140–164). Manchester: Manchester Univer-
1461 sity Press.
- 1462 Nauta, B. (1987). Naar Eenheid van Tijd in Nederland 1835–1909.
1463 *Master's thesis.* University of Amsterdam.
- 1464 Nettl, J. P., & Robertson, R. (1966). Industrialization, development or
1465 modernization. *The British Journal of Sociology*, 17, 274–291.
- 1466 Oppenheimer, V. K. (1988). A theory of marriage timing. *American*
1467 *Journal of Sociology*, 94, 563–591.
- 1468 Oris, M. (2000). The age at marriage of migrants during the indus-
1469 tial revolution in the region of Liege. *History of the Family*, 5,
1470 413–413.
- 1471 Prandy, K. (2000). The social interaction approach to the measure-
1472 ment and analysis of social stratification. *International Journal of*
1473 *Sociology and Social Policy*, 19, 215–249.
- 1474 Prandy, K., & Lambert, P. S. (2003). Marriage, social distance and
1475 the social space: An alternative derivation and validation of the
1476 Cambridge scale. *Sociology*, 37, 397–411.
- 1477 Priester, P. R. (1998). *Geschiedenis van de Zeeuwse Landbouw*
1478 *circa 1600–1910, volume 37 of A.A.G. Bijdragen.* Wageningen:
1479 Wageningen University.
- 1480 Rijken, S. R. H. (1999). *Educational expansion and status attainment.*
1481 *Ph.D. thesis.* Utrecht University, Utrecht.
- 1482 Schüren, R. (1993). Intergenerational occupational and marital mobil-
1483 ity in German cities in the nineteenth and early twentieth centuries.
1484 In A. Miles, & D. Vincent (Eds.), *Building European society* (pp.
1485 68–91). Manchester: Manchester University Press.
- 1486 Shorter, E. (1975). *The making of the modern family.* New York: Basic
1487 Books, Inc., Publishers.
- 1488 Sluiter, J. W. (2002). Overzicht van de Nederlandse Spoor- en
1489 Tramwegbedrijven. Matrijs, 3rd revised edition.
- 1490 Smits, J. (1996). Trouwpatronen en Sociale Openheid. Oplei-
1491 dingshomogamie en Beroepshomogamie in een Zestigtal
1492 Landen. Nijmegen, Katholieke Universiteit Nijmegen &
1493 STEPRO.
- 1494 Smits, J., Ultee, W. C., & Lammers, J. (1998). Educational homogamy
1495 in 65 countries: An explanation of differences in openness
1496 using country-level explanatory variables. *American Sociological*
1497 *Review*, 63, 264–285.
- 1498 Smits, J., Ultee, W. C., & Lammers, J. (2000). More or less educa-
1499 tional homogamy? A test of different versions of modernization
1500 theory using cross-temporal evidence for 60 countries. *American*
1501 *Sociological Review*, 65, 781–788.

- 1503 Snijders, T. A. B., & Bosker, R. J. (1999). *Multilevel analysis, an*
1504 *introduction to basic and advanced multilevel modeling*. London:
1505 Sage Publications.
- 1506 Stewart, A., Prandy, K., & Blackburn, R. M. (1982). *Social stratifica-*
1507 *tion and occupations*. Macmillan.
- 1508 Thornton, A., Axinn, W. G., & Hill, D. H. (1992). Reciprocal **effects**
1509 **of religiosity**. *Cohabitation and Marriage American Journal of*
1510 *Sociology*, 98, 628–651.
- 1511 Treiman, D. J. (1970). Industrialization and social stratification. In E.
1512 O. Laumann (Ed.), *Social stratification: Research and theory for*
1513 *the 1970s* (pp. 207–234). Indianapolis: Bobbs-Merrill.
- 1514 Ultee, W. C., & Luijkx, R. (1990). Educational **heterogamy and**
1515 **father-to-son occupational mobility in 23 industrial nations: Gen-**
1516 **eral societal openness or compensatory strategies of reproduction?**
1517 *European Sociological Review*, 6, 125–149.
- 1518 Uunk, W. (1996). Who marries whom? The **role of social origin, edu-**
1519 **cation and high culture in mate selection of industrial societies**
1520 **during The Twentieth century**. *Ph.D. thesis*. Nijmegen, Katholieke
1521 Universiteit Nijmegen.
- 1522 Van de Putte, B. (2003). Het Belang van de Toegeschreven Positie
1523 in een Moderniserende Wereld. Partnerkeuze in de 19^{de}-eeuwse
1524 Vlaamse Steden (Leuven, Aalst en Gent). *Ph.D. thesis*. Catholic
1525 University of Leuven.
- 1526 Van Heek, F. (1958). Sociale Stijging en Daling in Nederland. I. Insti-
1527 tuut voor Sociaal Onderzoek van het Nederlandse Volk i.s.m. het
1528 Sociologisch Instituut der Rijksuniversiteit Leiden.
- 1529 Van Leeuwen, M. H. D., & Maas, I. (2002). Partner **choice and**
1530 **homogamy in the nineteenth century**: Was there a **sexual revolution**
1531 **in Europe?** *Journal of Social History*, 36, 101–123.
- 1532 Van Leeuwen, M. H. D. & Maas, I. (2005). Endogamy and **social class**
1533 **in history**: An overview. In M. H. D. Van Leeuwen & I. Maas
1534 (Eds.), *Marriage choices and class boundaries: Social endogamy*
1535 *in history*. Volume 50 of IRSH Supplement (pp. 1–23). Cambridge:
1536 University Press.
- 1537 Van Leeuwen, M. H. D. & Maas, I. (2007). Herhaald Huwen: Een
1538 Historische Studie naar Heterogamie. In De Maakbaarheid van de
1539 Levensloop, edited by Tanja van der Lippe, Pearl A. Dijkstra, and
1540 Gerbert Kraaykamp – Joop Schippers, pp. 43–58. Van Gorcum.
- 1541 Q11 Leeuwen, M. H. D., Maas, I., & Miles, A. (2004). Creating a
1542 **historical international standard classification of occupations. An**
1543 **exercise in multinational interdisciplinary cooperation**. *Historical*
1544 *Methods*, 37, 187–197.
- 1545 Van Leeuwen, M. H. D., Maas, I., & Miles, A. (Eds.). (2005). *Mar-*
riage choices and class boundaries: Social endogamy in history,
volume 50 of international review of social history supplements.
Cambridge: University Press.
- Van Poppel, F., & Ekamper, P. (2005). De Goudse Horizon Ver-
ruimd. Veranderingen in de Herkomst van Goudse Bruiden en
Bruidegoms. In J. Kok, & M. H. D. Van Leeuwen (Eds.), *Genegen-*
heid en Gelegenheid: Twee eeuwen partnerkeuze en huwelijk (pp.
181–211). Amsterdam: Aksant.
- Van Poppel, F., Ekamper, P., & Nelissen, J. (1999). The **proper age to**
marry: Social norms and behavior in nineteenth-century Nether-
lands. *History of the Family*, 4, 51–75.
- Van Poppel, F. & Van Gaalen, R. (2008). Sociale klasse, sociale
mobiliteit en sterfte in Nederland, 1850-2007. In J. Maas, M. H. D.
Van Leeuwen, & K. Mandemakers (Eds.), *Mens en Maatschappij*
Special Issue.
- Van Zanden, J. L. (1992). *Mest en Ploeg*. In *Geschiedenis van de*
Techniek in Nederland Zutphen: Walburg Pers.
- Verslag van de Landbouw in Nederland over 1870. (1871). Verslag
van den Landbouw in Nederland over 1870. Technical report, Min-
isterie van Binnenlandse Zaken, 's Gravenhage.
- Verslag van den Staat der Hooge-, Middelbare en Lagere Scholen.
(1862-1917). Verslag van den Staat der Hooge-, Middelbare
en Lagere Scholen in het Koninkrijk der Nederlanden over
(1860/1915). Technical report, 's Gravenhage z.j.
- Verslag van den 2010. Koning betrekkelijk de Dienst der Posterijen
en der Telegrafen in Nederland. 1880-1916. 's Gravenhage: Van
Weelden en Mingelen.
- Zijdeman, R. L. (2008). Intergenerational transfer of occupational
status in 19th century Zeeland, The Netherlands. A Test of the
Influence of Industrialisation. Mass Communication and Urban-
isation in 117 Municipalities. *International Journal of Sociology*
and Social Policy, 28, 204–216.
- Zijdeman, R. L. (2009). Like my Father before Me. Intergenerational
Occupational Status Transfer during Industrialization (Zeeland,
1811-1915). *Continuity & Change*, 24, 455–486.
- Zijdeman, R. L., & Lambert, P. S. (2010). Measuring **social struc-**
ture in the past. A comparison of **historical class schemes**
and occupational stratification scales on Dutch 19th and early
20th century data. *Revue Belge d'Histoire Contemporaine*, 40,
111–141.
- Zijdeman, R. L. & Mandemakers, K. (2008). De Rol van het Gymnasi-
aal en Middelbaar Onderwijs bij de Intergenerationele Overdracht
van Status, Nederland 1865-1940. In I. Maas, M. H. D. Van
Leeuwen, & K. Mandemakers (Eds.), *Honderdvijftig Jaar Lev-*
enslopen (pp. 149–172). Amsterdam: Amsterdam University Press.