

RESEARCH ARTICLE

A Paleolatitude Calculator for Paleoclimate Studies

Douwe J. J. van Hinsbergen^{1*}, Lennart V. de Groot¹, Sebastiaan J. van Schaik², Wim Spakman^{1,3}, Peter K. Bijl¹, Appy Sluijs¹, Cor G. Langereis¹, Henk Brinkhuis^{1,4}

1 Department of Earth Sciences, Utrecht University, Utrecht, The Netherlands, **2** University of Oxford e-Research Centre, Oxford, United Kingdom, **3** Center of Earth Evolution and Dynamics (CEED), University of Oslo, Oslo, Norway, **4** Royal Netherlands Institute for Sea Research (NIOZ), Den Burg, The Netherlands

* D.J.J.vanHinsbergen@uu.nl



OPEN ACCESS

Citation: van Hinsbergen DJJ, de Groot LV, van Schaik SJ, Spakman W, Bijl PK, Sluijs A, et al. (2015) A Paleolatitude Calculator for Paleoclimate Studies. PLoS ONE 10(6): e0126946. doi:10.1371/journal.pone.0126946

Academic Editor: Dana L. Royer, Wesleyan University, UNITED STATES

Received: September 8, 2014

Accepted: April 9, 2015

Published: June 10, 2015

Copyright: © 2015 van Hinsbergen et al. This is an open access article distributed under the terms of the [Creative Commons Attribution License](https://creativecommons.org/licenses/by/4.0/), which permits unrestricted use, distribution, and reproduction in any medium, provided the original author and source are credited.

Data Availability Statement: The code behind the website associated with our paper are available at DOI: 10.5281/zenodo.16166. See also <http://dx.doi.org/10.5281/zenodo.16166>.

Funding: DJJvH and AS acknowledge the ERC for Starting Grants, numbers 306810 (SINK) and 259627 (DINOPRO), respectively. DJJvH is supported through NWO Vidi grant no 864.11.004. PKB acknowledges NWO Veni grant no 863.13.002. WS acknowledges support of the Research Council of Norway through its Centres of Excellence funding scheme, project number 223272. This paper contributes to the ESF EUROCORES program

Abstract

Realistic appraisal of paleoclimatic information obtained from a particular location requires accurate knowledge of its paleolatitude defined relative to the Earth's spin-axis. This is crucial to, among others, correctly assess the amount of solar energy received at a location at the moment of sediment deposition. The paleolatitude of an arbitrary location can in principle be reconstructed from tectonic plate reconstructions that (1) restore the relative motions between plates based on (marine) magnetic anomalies, and (2) reconstruct all plates relative to the spin axis using a paleomagnetic reference frame based on a global apparent polar wander path. Whereas many studies do employ high-quality relative plate reconstructions, the necessity of using a paleomagnetic reference frame for climate studies rather than a mantle reference frame appears under-appreciated. In this paper, we briefly summarize the theory of plate tectonic reconstructions and their reference frames tailored towards applications of paleoclimate reconstruction, and show that using a mantle reference frame, which defines plate positions relative to the mantle, instead of a paleomagnetic reference frame may introduce errors in paleolatitude of more than 15° (>1500 km). This is because mantle reference frames cannot constrain, or are specifically corrected for the effects of true polar wander. We used the latest, state-of-the-art plate reconstructions to build a global plate circuit, and developed an online, user-friendly paleolatitude calculator for the last 200 million years by placing this plate circuit in three widely used global apparent polar wander paths. As a novelty, this calculator adds error bars to paleolatitude estimates that can be incorporated in climate modeling. The calculator is available at www.paleolatitude.org. We illustrate the use of the paleolatitude calculator by showing how an apparent wide spread in Eocene sea surface temperatures of southern high latitudes may be in part explained by a much wider paleolatitudinal distribution of sites than previously assumed.

TOPO-EUROPE. AS thanks the Netherlands Earth System Science Centre (NESSC) for funding paleoclimate sensitivity science. The funders had no role in study design, data collection and analysis, decision to publish, or preparation of the manuscript.

Competing Interests: The authors have declared that no competing interests exist.

Introduction

In the last decade, paleoclimatology has been amongst the most rapidly developing research fields within the Earth Sciences. Crucial information that can be derived from geological records include the relationships between atmospheric chemical composition and global temperature, meridional temperature gradients, and regional and global sea level change, as well as the response of the global exogenic system to perturbations in ocean acidity and oxygenation [1]. Such studies ultimately aim at improving projections of future climate and ecosystem changes resulting from human emissions of carbon and nutrients.

A crucial aspect of paleoclimate reconstructions based on geological proxy data is a correct representation of paleogeography, notably continent-ocean configuration and latitude. Continent-ocean configuration partially determines the distribution of energy across the Earth's surface via ocean and atmosphere circulation. To accurately reconstruct past climate change, it is therefore essential to accurately constrain the paleogeographical position of a geological record, sampled at a drill site or an exposed sedimentary section, at the moment of deposition. For instance, a measurable/reconstructable (paleo-)climate parameter that provides key information to compare with theory (i.e., climate models) is the meridional temperature gradient. Many of such paleotemperature gradients have been reconstructed, e.g., for the Eocene [2–5]. However, for proper interpretation and comparison to numerical model predictions, the precise position, paleolatitude, and geography of the study sites, as well as the uncertainty on such numbers, must be optimally constrained to assess e.g., solar insolation and its position relative to expected ocean and atmosphere circulation patterns that potentially cause regional variations.

To incorporate the effect of plate tectonic changes, the relative motions of plates are reconstructed using marine magnetic anomalies and fracture zones of the ocean floor. Widely used reconstructions in the paleoclimate community are for instance those of Hay and colleagues [6], Scotese [7], and Müller and colleagues [8]. Using these reconstructions, so-called relative plate motion chains [9] are built that incorporate the relative motions of present and former plates that are or were bounded by mid-ocean ridges.

Such relative plate motion chains, which may be closed into a plate circuit, may be a sufficient reference frame to study the kinematic evolution of a destructive plate boundary, such as the India-Asia plate boundary in the Himalaya. For many other studies, however, it is key to determine the position of the plate circuit relative to the Earth's spin axis, or to the mantle. To this end, 'absolute' reference frames have been developed. Paleoclimate studies require knowledge of the location of a studied sedimentary archive during its deposition relative to the Earth's spin axis, as this determined its position relative to the sun, and thus its climate.

Below, we illustrate that reference frames reconstructing plates relative to the mantle can considerably differ from frames reconstructing plates relative to the spin axis (perhaps as much as 15° (i.e. ~1650 km) in the Early Cenozoic [10] and more than 20° (>2200 km) in the Mesozoic [11]) due to a process known as 'true polar wander'. These differences may become important at critical time intervals and specific locations on Earth, for instance close to 60° paleolatitude, where even slight differences in paleolatitude determine whether a given site was in easterly versus westerly winds [12] and it is thus essential to use a reference frame relative to the Earth's spin axis.

The notion, and importance of using the appropriate reference frame for paleoclimate studies, however, seems somewhat underappreciated in the literature. Most paleoclimate studies do not specify the reference frame that is used to determine the paleolatitude. In more recent literature (e.g., [3]), reference is frequently made to freely online available Gplates reconstruction software [13]. This software package comes with a state-of-the-art relative global plate reconstruction [14], and as default a mantle reference frame [15], which is appropriate for

geodynamic problems, but, as we will explain, not for paleoclimate studies. As a consequence, while the effects of the obliquity of the Earth axis that correspond to variations of $\sim 2^\circ$ are carefully taken into account, the potential uncertainty introduced by misplacement of a study site due to an inappropriate reference frame may be one order of magnitude larger for paleoclimate studies going far back into geological time.

In this paper, we summarize the procedures underlying plate tectonic reconstructions and reference frame generation, and identify which reference frames should be used for various Earth scientific problems. In addition, we describe and provide an online tool (available at www.paleolatitude.org) that we developed to determine the paleolatitude within all major plates and plate fragments, allowing a user to determine the paleolatitude and associated error bars relative to the Earth's spin axis, tailor-made for paleoclimate analyses of Jurassic and younger times. Finally, we will show a case study in Cenozoic global temperature reconstructions to illustrate the importance of using the appropriate reference frame, and the use of the provided paleolatitude calculator.

Plate Kinematic Reconstructions and Reference Frames

Paleoclimate studies require constraining the paleolatitude at which sediments were deposited relative to the Earth's orbit around the sun, to determine paleoclimatic constraints such as the angle of solar insolation. This requires constraints on the obliquity of the Earth's spin axis, and a reference frame that places the plates relative to that spin axis. As we will explain in this section, only paleomagnetic data can provide this information whereas mantle reference frames cannot because of a process known as 'true polar wander'. To this end, we will briefly explain how global plate reconstructions and reference frames are built, why different reference frames exist, and how the choice of the appropriate reference frame is crucial for application to a paleoclimate (or geodynamics) study.

Paleomagnetic observations and paleogeography

The geodynamo that generates the Earth's magnetic field results from convection in the outer core [16]. On time scales larger than ~ 10 kyr this dynamo can be considered a dipole that aligns with the Earth's spin axis [9,16–21]. In an ideal dipole field, the orientation of magnetic field lines is a function of latitude only. In paleomagnetism, the paleomagnetic unit vector tangential to the local magnetic field line is normally decomposed into two directions: the declination, which is the direction of the horizontal component relative to geographical North (spin axis), and the inclination, which is the angle between the vertical component and the horizontal. An inclination is positive when it plunges downward. The inclination I is a function of latitude λ (Fig 1) following the dipole equation:

$$\tan I = 2 \tan \lambda \quad (1)$$

Small deviations on the order of several degrees between the magnetic north pole and the spin axis may derive from non-dipole field components, which are generally believed to be $<5\%$ of the dipole field components [22]. In addition, on timescales smaller than ~ 10 kyr, the geodynamo undergoes secular variation that may deflect the magnetic pole by tens of degrees from the spin axis. Paleomagnetists therefore carefully sample the rock record to average out this short-term variation, to a precision of a few degrees (i.e. several hundreds of kilometers in paleolatitude), following clear quality criteria [23]. A successful paleomagnetic mean direction plus its error margins are therefore calculated from a distribution of Virtual Geomagnetic Poles (VGPs) that represents paleosecular variation over a sufficient amount of geological time. This VGP distribution is statistically represented by a 95% confidence limit, which is

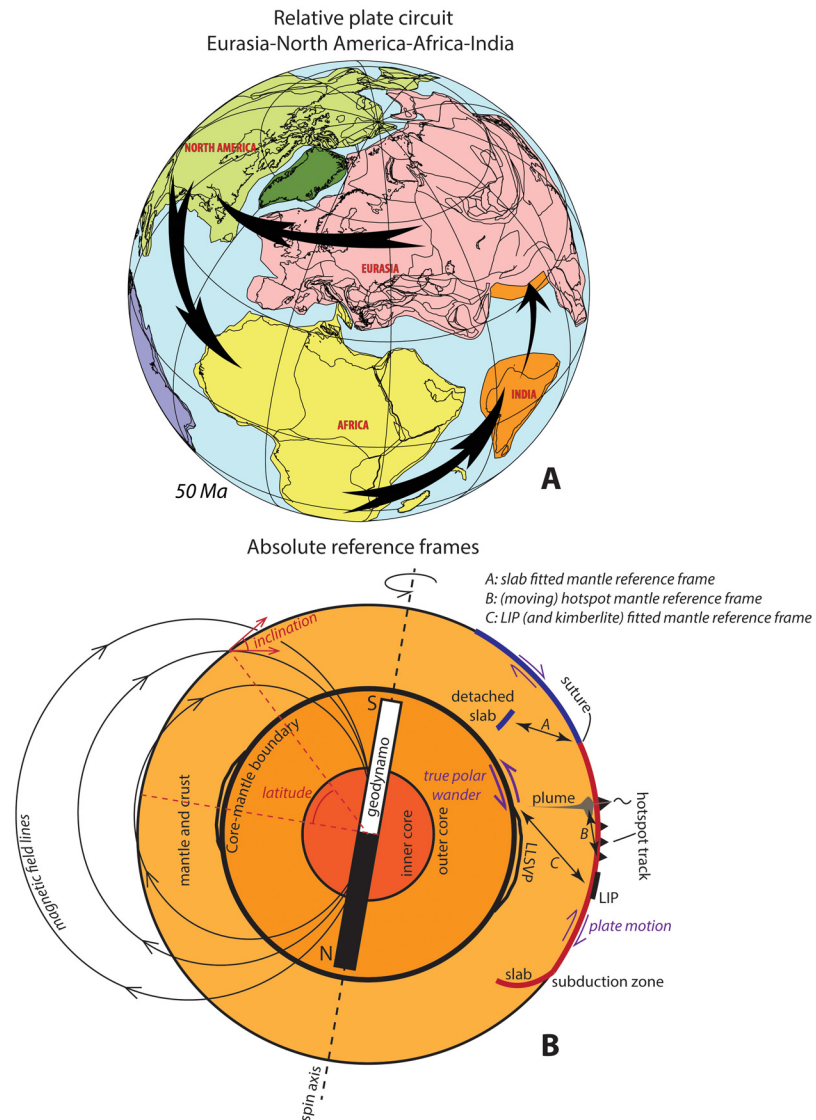


Fig 1. (A) Example of a plate circuit. The motion of India versus Eurasia cannot be directly constrained since these plates are bounded by a destructive plate boundary (trench). Relative motions between these plates can be reconstructed by restoring the opening history of the North Atlantic ocean between Eurasia and North America, the Central Atlantic Ocean between Africa and North America, and the Indian Ocean between India and Africa. With the relative positions of all these plates known through time, a paleomagnetic pole of one of these plates can be used to constrain all of these plates relative to the geodynamo. (B) schematic outline of plate and mantle motions and reference frames. Plates move relative to the mantle (plate tectonics), and plates and mantle together can undergo phases of motion relative to the liquid outer core (true polar wander). Both processes lead to motion of a rock record relative to the Earth's spin axis, and hence both influence the angle of insolation that is relevant for paleoclimate study. Mantle reference frames A-C (see text for explanation of these frames) can only reconstruct plate motion relative to the mantle, but cannot reconstruct true polar wander. These frames are therefore used for analysis of geodynamics, but should not be used for paleoclimate studies. Instead, a paleomagnetic reference frame should be used. On geological timescales, the geodynamo coincides with the Earth's spin axis. The orientation of the paleomagnetic field in a rock can be used to restore a rock record into its original paleolatitude relative to the spin axis.

doi:10.1371/journal.pone.0126946.g001

circular (cone-shaped) at the mean VGP of paleopole, expressed by the term 'A95' [24]. As a consequence, the distribution of paleomagnetic directions is ellipse-shaped, with Gaussian distributed errors in declination (ΔD_x) and inclination (ΔI_x) [17]. The recorded inclination $I \pm \Delta I_x$ thus quantifies the paleolatitude and its error margins. Note that the dipole equation causes the errors in paleolatitude to be asymmetrical. In addition, the recorded declination determines the vertical-axis rotation component of the sampled rock sequence and constrains the total tectonic rotation that occurred since the time of deposition.

If the studied rocks have (latitudinally) moved or rotated after deposition because of plate tectonic motion and/or true polar wander, the recorded paleomagnetic direction will differ from the magnetic direction at the present position. For these rocks, the recorded magnetic paleopoles—in modern geographic coordinates—appear to have 'wandered' from some past position to the current geographical North Pole. This 'apparent polar wander path' (APWP) forms the basis for the construction of paleomagnetic reference frames for plate motion [25].

Paleomagnetic reference frame

For times prior to Pangea, i.e. from Paleozoic times and older, apparent polar wander paths have been constructed from paleomagnetic data from individual continents and continental fragments that were separated by oceans that have now entirely been subducted (e.g., [26]). For times since the break-up of Pangea, however, paleomagnetic data from all continents can be used together to determine the motion of plates relative to the Earth's spin axis, through the construction of a Global Apparent Polar Wander Path (GAPWaP) [20].

Marine magnetic anomalies on the modern ocean floor in combination with transform faults and fracture zones allow for the reconstruction of the relative motions between most modern continents since the break-up of Pangea. Vine and Matthews [27] recognized that magnetic anomalies are mirrored in, and result from, ocean spreading at mid-ocean ridges while recording magnetic polarity reversals. The ages of these magnetic polarity reversals are well determined and summarized in the geomagnetic polarity timescale [28,29]. Thus, the amount and rate of sea floor spreading through time can be quantified and the relative motions of all modern and former plates that are bounded by an active or extinct mid-ocean ridge have been reconstructed (expressed as rotations over Euler poles [30,31]) forming relative plate motion chains [9] (Fig 1A). Typical error bars associated with magnetic anomaly and transform-fracture zone reconstructions are on the order of tens of kilometers only [32], an order of magnitude smaller than typical errors associated with paleomagnetic poles.

When relative motions between plates in a plate motion chain are known through ocean basin reconstructions, a paleomagnetic pole from one of these plates is sufficient to constrain the position of the other plates in the chain relative to the geodynamo. This way, all paleomagnetic poles from the stable continents, and in a few cases from islands built on ocean floor, can be calculated into one common coordinate frame (typically attached to South Africa [9,20]). A global apparent polar wander path (GAPWaP) can then be constructed by averaging all paleomagnetic poles of chosen age bins, which gives associated A95 confidence regions. The latest of these was published by Torsvik and colleagues [20], and we also provide results from earlier versions published by Besse and Courtillot [18,33], which is broadly similar, and Kent and Irving [34], which differs particularly in the Jurassic. The GAPWaP can be used to determine the paleolatitude and total vertical axis rotation of any site on Earth relative to the dipole axis (as proxy for the spin axis) provided that this site is located on a plate that can be connected through a plate motion chain to South Africa. Paleomagnetic data, however, do not constrain paleolongitude: paleolongitude relative to the Earth's spin axis is irrelevant for climate studies, as it only determines when the sun comes up and goes down in a 24 hour cycle. When

portraying paleogeographical maps using a paleomagnetic reference frame, absolute longitude is therefore not quantified, only relative longitudinal positions are shown, following from the global plate circuit [9].

Hotspot reference frames

To study the interaction of the Earth's mantle with crust and surface evolution, the geodynamic community has developed so-called mantle reference frames, to analyze e.g., the driving mechanism of plate tectonics, or dynamic surface topography.

Mantle reference frames are developed by linking structures that are presumed to be more or less stationary in the ambient mantle relative to their geological expressions in the rock record. The best known of these are hotspot reference frames. Hotspot tracks, linear chains of intraplate volcanic centers with a regular age progression, are interpreted to reflect plate motion over a stable magma source [35] likely sourced from mantle plumes [36]. The first hotspot reference frames that attempted to place plate motion chains relative to the mantle, assumed hotspot fixity in the upper mantle [25,37]. In the light of evidence that hotspots may actually slowly move relative to one another as a result of plume deflection due to upper mantle convection [38–40], more recently moving hotspot reference frames were developed that correct for this relative plume motion. This was first established for the Indo-Atlantic Realm [15], and recently for the first time for a larger plate motion chain integrating the Indo-Atlantic and Pacific realms [10]. Hotspot reference frames go back to the mid-Cretaceous (100–120 Ma), prior to which time there are insufficient hotspot tracks left due to subduction to carry out a meaningful analysis. Hotspot reference frames thus constrain the paleolatitude and paleolongitude of all plates in the plate motion chain relative to the mantle.

True Polar Wander

It turns out that hotspot reference frames and paleomagnetic reference frames predict different paleolatitudinal and rotational motions of the global plate motion chain over extended periods of time (10^7 Myr). Doubrovine and colleagues [10], for instance, calculated that the 'misfit' in predicted pole position between their global moving hotspot reference frame and the GAPWaP of Torsvik and colleagues [20] may be as much as $\sim 15^\circ$ in early Cenozoic time. These differences are physically explained by a uniform rotation of the mantle and crust relative to the geodynamo (spin axis) along the core-mantle boundary. This is caused by the ongoing redistribution of mass by mantle convection and crustal deformation continuously perturbing the Earth's moments of inertia. Such a uniform rotation thus rotates the mantle and crust relative to the spin axis [41,42], a process known as *true polar wander* (Fig 1B). Because a hotspot reference frame constrains motions of plates relative to the mantle, the common motion of plates and mantle together relative to the core (i.e. true polar wander) goes unnoticed in such frames. As a result, paleolatitudes predicted by a mantle reference frame may differ from paleolatitudes predicted by a paleomagnetic reference frame. The magnitude and timing of true polar wander events may be calculated from the difference in pole positions predicted by a hotspot reference frame and a paleomagnetic reference frame (e.g., [10,18]). Alternative procedures have been developed to calculate true polar wander from paleomagnetic data alone [11].

The possibility to correct a paleomagnetic reference frame for the effects of true polar wander [11] allowed determining the paleolatitude of a plate motion chain relative to today's mantle structure. Using this, new mantle reference frames were recently developed for geodynamic analyses [43,44]. One of these frames shifts the plate motion chain in longitude to optimize the fit between subduction zones in plate reconstructions and remnants of subduction imaged by seismic tomography ('slab fitting') [43]. In addition, plate reconstructions have suggested that

mantle plumes are generated at specific regions in the deepest mantle that can be imaged by seismic tomography [45–49]. Geological expressions of mantle plumes such as large igneous provinces (LIPS) and kimberlites have thus also been used to provide paleolongitudinal control relative to the mantle, by fitting these to their possible source areas (Fig 1).

On the other hand, methods to calculate the effect of true polar wander have shown that these may be as large as $\sim 23^\circ$ in the Late Triassic to Early Jurassic [11], a value that was argued to even be an underestimate due to time averaging that is applied in APWP construction [34,50–52]. If one would use a mantle reference frame to determine a paleolatitude for a paleoclimate study, those real latitudinal changes relative to the Earth's spin axis remain unaccounted for. This may be further illustrated by a recent study of Steinberger and coworkers [53], who showed that Cenozoic true polar wander contributed by as much as 12° to the northward motion of the north Atlantic realm, thereby preconditioning the late Neogene glaciation of Greenland: when studied in a mantle reference frame, this 12° northward motion remains unnoticed.

Choosing the appropriate reference frame for paleoclimate studies

Paleoclimate studies should in all cases use paleomagnetic data to determine the paleolatitude of deposition of a studied site relative to the Earth's spin axis. As mentioned above, the paleolatitude inferred for a Paleocene site could be misplaced by as much as 12° (1300 km) relative to the spin axis if one would use the global moving hotspot frame [10] instead of a paleomagnetic reference frame, which may significantly influence the conclusions drawn for paleoclimate reconstructions.

Muttoni and colleagues [50,54] showed that in the Apennines of Italy the Late Triassic–Early Jurassic true polar wander event is associated with a marked facies change from sub-tropical carbonates to tropical radiolarian cherts and back. If one would estimate the paleolatitudes of deposition of these rocks using a mantle reference frame, one would be inclined to explain this result from exogenically-forced climate changes rather than a southward and then northward paleolatitude shift relative to the spin axis.

It is therefore crucial to use the appropriate reference frame when estimating a paleolatitude relative to the Earth's spin axis. Erroneously using a mantle reference frame for climate studies, no matter how high the quality of that mantle reference frame, may introduce errors in perceived latitude relative to the Earth's orbit of thousands of kilometers, and tens of degrees of latitude in extreme cases. Paleoclimate studies need to use paleolatitudinal information from paleomagnetic data, and the most accurate results will be obtained when the studied site can be placed in a plate motion chain placed in a global paleomagnetic reference frame defined by the GAPWaP.

An Online Paleolatitude Calculator: www.paleolatitude.org

To unify the datasets that are used in paleoclimate studies, we have developed an online tool to calculate the paleolatitude of a given site, where possible for the last 200 Ma. This calculator can be found on the website www.paleolatitude.org. The version of this website that is described in this paper is version 1.0. We will update this website in the future, for instance expanding it farther back in time, including new GAPWaP's, or incorporating updated plate reconstructions, and when we do, add a new version of the paper (1.1, 1.2, etc), with specifications on the nature of the update clearly indicated on the site. When citing this paper, and this website, the user is advised to specify the used version of the online calculator. The 1.0 calculator contains options to calculate paleolatitudes using three different paleomagnetic reference frames. The default frame is the GAPWaP of Torsvik and colleagues [20] (S4 Table). These authors used paleomagnetic data from a plate motion chain that contained Eurasia, Greenland,

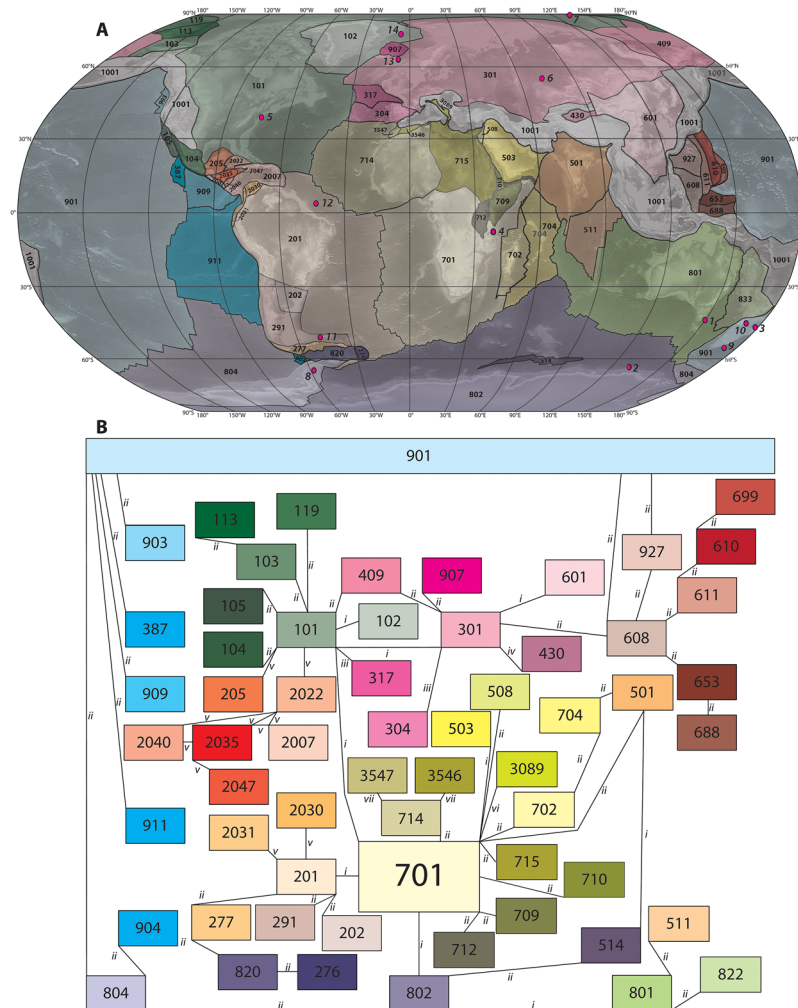


Fig 2. (A) Map with the main lithospheric fragments that have moved independently relative to surrounding fragments in the past 200 Ma. (B) Plate circuit of all fragments shown in A. Rotation parameters relative to South Africa (701) are given for all fragments in Online Appendices 1–3. Names of all elements are given in Table 1. Rotation parameters are taken from (i) ref [20], or ref [18], or ref [34], depending on the reference frame; (ii) ref [14]; (iii) ref [58–60]; (iv) ref [67]; (v) ref [57]; (vi) ref [61]; (vii) ref [62]. Italic number 1–14 indicate the locations of the sites used for a case study on Eocene meridional temperature, see Fig 5, and Table 2.

doi:10.1371/journal.pone.0126946.g002

North America, South America, East Antarctica, India, Australia, and Africa, and we have adopted the same (Euler) rotation parameters for the relative motions between these plates that were used to develop the GAPWaP. To this basic plate motion chain, we added plates, such as the Pacific plate, and lithospheric fragments that were part of different plates in the last 200 Ma (Fig 2). An example of the latter is the Seychelles fragment (704, Fig 2), which has never been an independent plate, but has been part of both India and Africa (e.g., [55,56]) and therefore has its own unique set of rotation parameters. In addition, the user can choose the older, but widely used paleomagnetic reference frame of Besse and Courtillot [18], which is broadly similar, and the one of Kent and Irving [34], which only contains paleomagnetic poles from sedimentary rocks if those were explicitly corrected for a paleomagnetic artifact known as ‘inclination shallowing’ that results from compaction of sedimentary rocks (S4 Table). This frame therefore is based on a much smaller dataset, but was argued by the authors to be more

accurate than frames based on large, but uncorrected data sets. Kent and Irving [34] built their APWP inspired by the finding of paleomagnetic data in the Jurassic that showed significant differences with other global apparent polar wander paths e.g., [50,52], probably as a result of the 20 Myr sliding window used in APWP calculations that smoothens a sharp cusp on a timescale shorter than 20 Myr. This sharp Jurassic cusp is believed to be caused by true polar wander [52,54]. The Kent and Irving [34] reference frame was not defined for the period between 0 and 50 Ma, and is only applied before that time. The reference frames of Besse and Courtillot [18] and Kent and Irving [34] used rotation parameters for the main continents as well as time scales that are subtly different from the ones used by Torsvik and colleagues [20]. The paleolatitude calculator uses the specific rotation parameters and ages that were used by the authors of each paleomagnetic reference frame.

The plate circuits defined in each frame are then expanded with reconstructions of areas from which no paleomagnetic data were used to build the reference frame. Rotation parameters for the (circum-) Pacific Realm were adopted from the global *GPlates* [13] reconstruction of Seton and colleagues [14]. The plates of the Pacific can only be incorporated in our plate motion chain starting from Late Cretaceous times, because prior to that the Pacific plates did not share a passive margin with any of the surrounding continents [32]. We incorporated a simplification of a recent restoration of the Caribbean region [57] as well as recent restorations of the Bay of Biscay and Iberia [58–60], Adria [61] and NW Africa [62] (Fig 2; Table 1). The resulting circuit contains 61 fragments (Fig 2; Table 1), for which rotation parameters relative to South Africa are given in the online Appendices 1–3 (one per reference frame). Many sedimentary sections studied on land are exposed in fold-thrust belts of, e.g., the Alpine-Himalayan mountain belt or western North America. We have not included these complexly deformed areas in this tool at this moment; reconstruction of these zones are underway, and have considerably larger error margins. Paleomagnetic and kinematic reconstructions of western North America [34,63–65], the Tethyan realm [62,66–74] and the southwest Pacific [75,76] are anticipated to be included in the paleolatitude calculator in the future. Because most paleoclimate studies, including those based on ocean drilling, are generally carried out in tectonically relatively inactive regions, notably in continental and oceanic basins and at passive margins, we restrict ourselves now to the stable plate interiors.

The paleolatitude calculator uses the following approach. The GAPWaP is defined in a (South) African coordinate frame [20]. The online paleolatitude calculator only requires present-day geographic coordinates as input, and automatically assigns this to the appropriate plate or plate fragment (Fig 3). The apparent location of the paleomagnetic north pole for this plate fragment through time is then derived by rotating the GAPWaP into the coordinates of this fragment using the Euler rotation parameters given in the online S1, S2, and S3 Tables.

The paleolatitude of a specific location and for a given age on the selected plate is then calculated as follows. The GAPWaP provides the apparent position of the paleomagnetic pole for the chosen plate, with a confidence region given as A95 [20]. At the chosen position on that plate, the calculated paleomagnetic pole corresponds to a paleomagnetic inclination and its error $I \pm \Delta I_x$ from which the paleolatitude and its error is computed using Eq (1). The dipole equation causes the error in paleolatitude to be asymmetrical; the error margin is calculated via

$$\tan(I + \Delta I_x) = 2 \tan \lambda_{hi} \tag{2a}$$

$$\tan(I - \Delta I_x) = 2 \tan \lambda_{lo} \tag{2b}$$

We do not incorporate additional errors, e.g. associated with the plate reconstruction. These are typically smaller than paleomagnetic errors, but are not quantified everywhere. The error

Table 1. List of codes and associated polygons representing plates or plate fragments used to build the global plate motion chain of Fig 2.

Plate ID	Plate name	Plate name	Plate ID
101	North America	Africa	701
102	Greenland	Amerasia Basin	119
103	North Slope Alaska	Arabia	503
104	Mexican terranes	Australia	801
105	Baja California	Baja California	105
113	Northwind Ridge	Capricorn	511
119	Amerasia Basin	Caribbean	2007
201	South America	China Blocks & Amuria	601
205	Yucatan	Chortis Block	2035
276	Sandwich	Cocos	909
277	North Scotia	Cuba segment	2022
301	Eurasia	East Antarctica	802
304	Iberia	East Pareve Vela	610
317	Porcupine	Elan Bank	514
387	Riveria	Eurasia	301
409	Northeast Siberia	Greater Panama	2031
430	Tarim	Greenland	102
501	India	Iberia	304
503	Arabia	India	501
511	Capricorn	Jan Mayen	907
514	Elan Bank	Juan de Fuca	903
601	China Blocks & Amuria	Lord Howe Rise	833
608	South Phillipine Sea	Madagascar	702
610	East Pareve Vela	Maracaibo Block	2030
611	North Pareve Vela	Marianas forearc	699
653	North Caroline Sea	Mexican terranes	104
688	Southwest Caroline Sea	Mobile belt—unconstrained	1001
699	Marianas forearc	Nazca	911
701	Africa	North America	101
702	Madagascar	North Caroline Sea	653
704	Seychelles	North Nicaraguan Rise	2047
714	NW Africa	North Pareve Vela	611
801	Australia	North Phillipine Sea	927
802	East Antarctica	North Scotia	277
804	West Antarctica	North Slope Alaska	103
820	South Scotia	Northeast Siberia	409
833	Lord Howe Rise	Northwind Ridge	113
901	Pacific	NW Africa	714
903	Juan de Fuca	Pacific	901
904	Phoenix	Phoenix	904
907	Jan Mayen	Porcupine	317
909	Cocos	Riberia	387
911	Nazca	Sandwich	276
927	North Phillipine Sea	Seychelles	704
1001	Mobile belt—unconstrained	Siuna Terrane	2040
2007	Caribbean	South America	201
2022	Cuba segment	South Phillipine Sea	608

(Continued)

Table 1. (Continued)

Plate ID	Plate name	Plate name	Plate ID
2030	Maracaibo Block	South Scotia	820
2031	Greater Panama	Southwest Caroline Sea	688
2035	Chortis Block	Tarim	430
2040	Siuna Terrane	West Antarctica	804
2047	North Nicaraguan Rise	Yucatan	205

Euler poles for all polygons relative to South Africa are given in [S1](#), [S2](#), and [S3](#) Tables.

doi:10.1371/journal.pone.0126946.t001

bars given by the paleolatitude calculator should therefore be considered as minimum values. Our paleolatitude calculator linearly interpolates latitudes and confidence intervals within the 10 Myr intervals of the GAPWaP.

We incorporate the effect of age uncertainty on paleolatitude uncertainty by calculating the average paleolatitude, and its upper and lower bounds for each 10 Myr step within the time interval specified. The paleolatitude returned by the calculator is obtained from linear interpolation at the specified age, while the upper and lower bounds for the paleolatitude are the maximum and minimum occurring values within the time interval specified. The mathematical details of the routine are fully described in the [S1 Text](#).

Case Study: Eocene Meridional Sea Surface Temperature Gradients

The Eocene is an important time interval for paleoclimatology, because Eocene atmospheric CO₂ concentrations may have been similar to those of our near future assuming unabated carbon emissions [77]. In light of this, a large body of paleoclimate research has been undertaken in recent years to reconstruct Eocene climate. One notably interesting result from this research is that there apparently were flat meridional paleotemperature gradients in the Eocene according to a compilation of Bijl et al [2], who used paleolatitudes as reported in the studies that were compiled, whereby the source of these reported paleolatitudes are generally not specified in detail. Particularly the high latitudes were much (>20°C) warmer than today, while mid- and low latitude paleotemperatures were only moderately warmer (Fig 4, [2]). Although some cooling occurred during the middle Eocene, the Southern Ocean sea surface temperatures (SSTs) still stood out as extraordinarily warm during this time period. Numerical models are used to assess the radiative forcing required to produce these temperatures. However, to match the high latitude temperature reconstructions, the current generation of fully coupled models require radiative forcing so strong that mid-latitude and equatorial temperatures should have been much higher than existing data suggest (e.g., [3]).

We use this case study to illustrate the use of the paleolatitude calculator: we test whether the detailed plate model (Fig 2) and the latest paleomagnetic reference frame [20] leads to corrections in the paleolatitudes originally determined for the data points, and we determine lower-bound uncertainties of the corrected paleolatitudes. The southern high latitude SST data come from the SW Pacific, SE Indian and SW Atlantic Oceans, specifically from the East Tasman Plateau [2,12], the Wilkes Land Margin of East Antarctica [12], New Zealand [78,79] and Seymour Island, Antarctic Peninsula [80] (Figs 2 and 4, Table 2).

Recently, paleotemperature data from Seymour Island, Antarctic Peninsula, South Atlantic Ocean were reported that suggested much (~5°C) cooler middle Eocene paleotemperatures than those from time-equivalent sites in the SW Pacific Ocean [80].

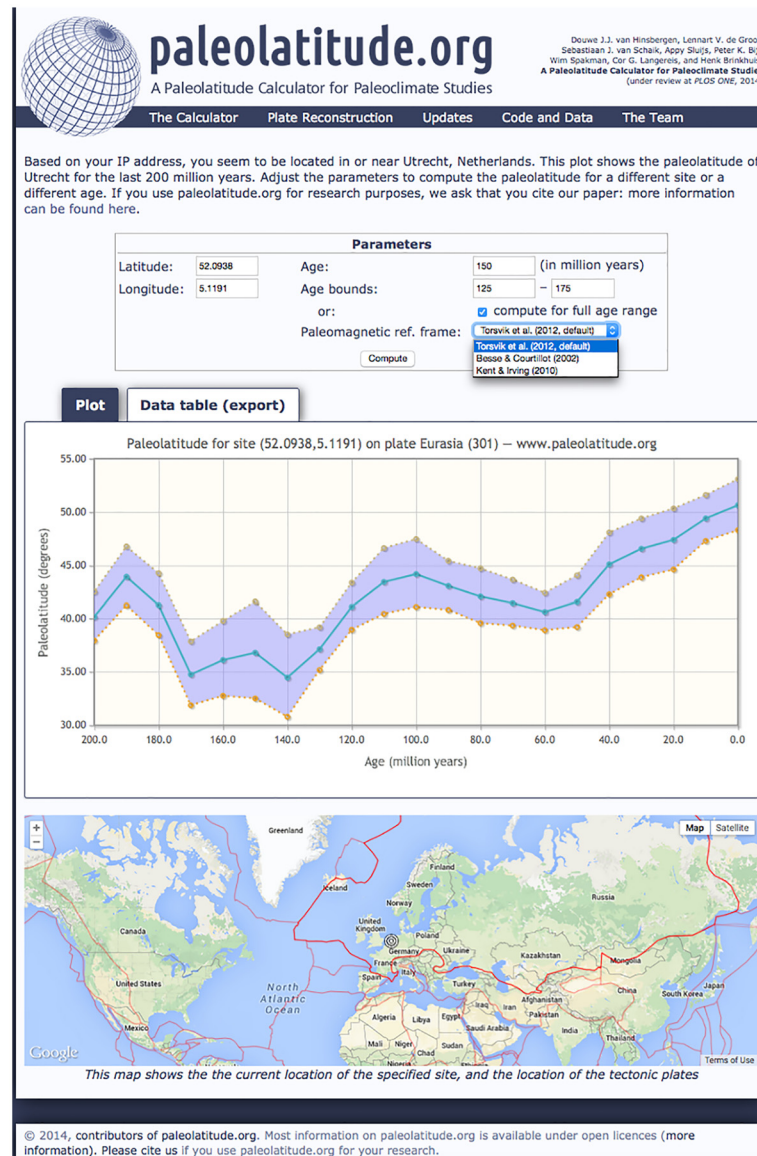


Fig 3. Screen shot of www.paleolatitude.org. In the top panel, site latitude and longitude is required (in decimal degrees), the age of the site, and the lower and upper age bounds. Center panel shows the paleolatitude with error bars in the period between the upper and lower bounds. The option 'compute for full age range' will calculate a paleolatitude curve using the full age range of the plate (fragment) on which the chosen site is located, which will appear in the center panel. Second tab in the center panel will provide a table with an output file for paleolatitudes with error bounds in the chosen time interval. Note that at the location of this site (e.g., close to a mid-ocean ridge) the plate may not have existed throughout this entire history. The bottom panel shows the location of the site on the modern topographic world map, as well as the plate (fragment) on which the site is located. Reprinted from www.paleolatitude.org under a CC BY license, with permission from S.J. van Schaik, original copyright 2014.

doi:10.1371/journal.pone.0126946.g003

Paleolatitude reconstructions used by these papers suggested that these sites were all located at about the same paleolatitude of ~65°S [2,80]. Paleoceanographic reconstructions suggested that both sites were under Antarctic-derived surface current influence [92,93], and therefore, similar paleo-SSTs were expected [80].

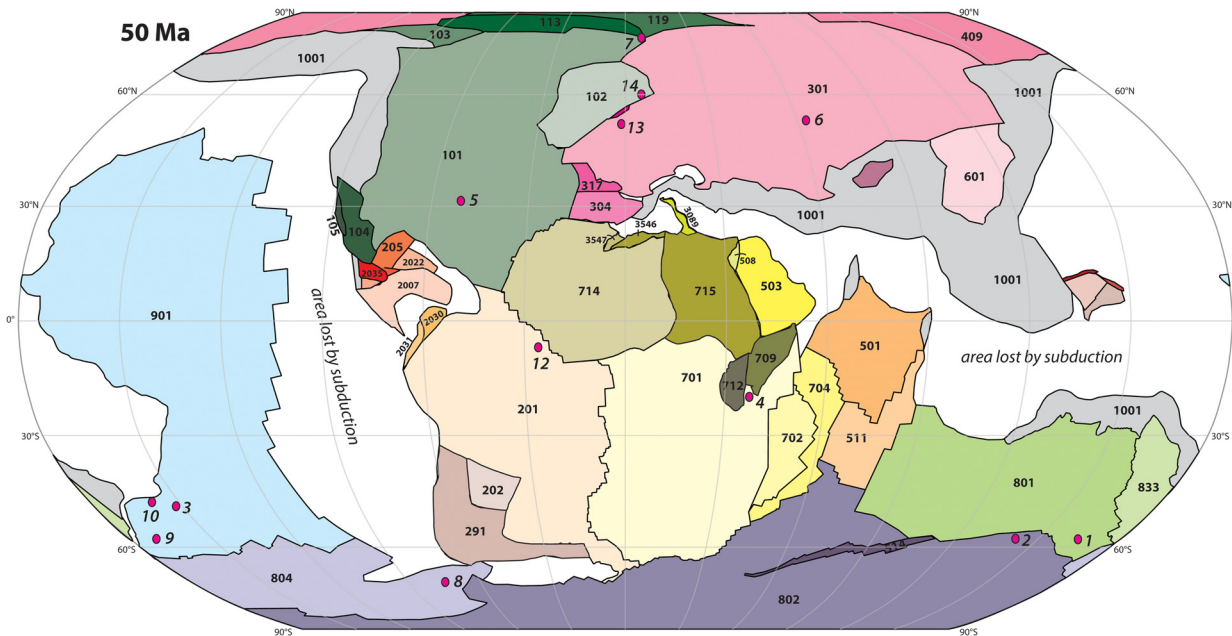


Fig 4. Plate reconstruction at 50 Ma, around the moment of the Early Eocene Climate Optimum, with the sites used for sea surface temperature estimates in Figs 1 and 5. Reconstruction made in *GPlates* from Seton and colleagues [14], with modifications as indicated in the main text, placed in the paleomagnetic reference frame of Torsvik and colleagues [20]. Absolute paleolongitude of the global plate motion chain is unconstrained, and irrelevant for paleoclimate reconstructions. Meridians are spaced with 30 degree intervals. Italic numbers 1–14 indicate the reconstructed locations of the sites used for a case study on Eocene meridional temperature, see Fig 5, and Table 2.

doi:10.1371/journal.pone.0126946.g004

Our paleolatitude calculator introduces error bars on the paleolatitude estimates, which at high latitudes may amount to $\sim 15^\circ$ in the Eocene, and determines significant shifts in the paleolatitude of some sites (Fig 5). For instance, the most recent IPCC report [1] places the continents Africa, Europe, North and South America more than 10° farther north than predicted paleomagnetically. In addition, when we recalculate the paleolatitudes of the sites that created the enigma on the middle Eocene paleotemperatures from the South Atlantic and southwest Pacific Ocean, it becomes clear that the site on Seymour island, which gave much cooler paleotemperatures than time-equivalent sites in the South Pacific realm, was located $\sim 12^\circ$ (~ 1300 km) farther south than the Pacific sites relative to the Earth’s spin axis (Fig 5, Table 2). This latitudinal separation allows for a steeper SST gradient in the middle Eocene, which makes the numerical modeling studies more compatible with observations. Notably, the apparent improvement in paleotemperature gradient reconstructions is consistent for the three paleomagnetic reference frames of Torsvik et al. [20], Besse and Courtillot [18] and Kent and Irving [34]: differences in paleolatitude reconstructions are within error of each other (Fig 5c). The largest difference between frames is noticeable around the locations of the paleomagnetic poles, in Siberia. A site close to the Russian-Kazakhstan border [83] has Early Eocene paleolatitudes that are ~ 10 degrees different between the Torsvik et al. [20] and Besse and Courtillot [18] frames (Fig 5c). Irrespective of the reference frame applied, our case study illustrates the importance of reconstructing accurate paleolatitudes in paleoclimate studies, and the straightforward applicability of the paleolatitude calculator in such studies.

Summary and Conclusions

In this paper, we summarize how the latest state of the art of global plate reconstructions and paleomagnetic reference frames provide the appropriate boundary condition for paleoclimate

Table 2. Locations, ages, sea surface temperature calculations with standard deviation, and paleolatitude values for sites used to calculate meridional temperature profiles for time slices in the Early (55–48 Ma) and Middle Eocene (45–39 Ma).

Site number	Site name	Plate ID	Present-day latitude (°)	Present-day longitude (°)	Age (Ma)	Age (min) (Ma)	Age (max) (Ma)	Published paleolatitude (°)	SST (TEX86H) (°C)	1σ SST (°C)	Source	Torsvik et al [21]			Besse and Courtillot [18]			Kent and Irving [65]			
												Paleolatitude (°)	Northern limit paleolatitude (°)	Southern limit paleolatitude (°)	Paleolatitude (°)	Northern limit paleolatitude (°)	Southern limit paleolatitude (°)	Paleolatitude (°)	Northern limit paleolatitude (°)	Southern limit paleolatitude (°)	
<i>early Eocene</i>																					
1	ODP Site 1172	801 (Australia)	-43.96	149.93	51.5	48.0	55.0	-65	28.9	2.4	[2]	-57.9	-52.8	-62.8	-59.1	-52.7	-60.5	-50.6	-72.5		
2	IODP Site U1356	802 (East Antarctica)	-63.01	135.00	51.5	48.0	55.0	-65	32.0	0.7	[12]	-57.7	-52.6	-62.7	-59.5	-53.1	-59.4	-49.8	-71.1		
3	Midi-waipara	901 (Pacific)	-43.16	172.77	51.5	48.0	55.0	-60	31.0	1.0	[78, 79]	-48.1	-44.1	-52.0	-48.8	-44.0	-51.1	-43.9	-59.8		
4	Tanzania	701 (South Africa)	-7.77	39.06	51.5	48.0	55.0	-19	33.0	1.7	[81]	-22.0	-19.6	-24.4	-21.1	-19.0	-19.7	-17.1	-22.5		
5	New Jersey	101 (North America)	39.61	-74.44	51.5	48.0	55.0	35	30.5	2.0	[82]	34.1	36.2	31.9	36.6	39.4	35.3	31.3	39.9		
6	Siberia	301 (Eurasia)	53.50	73.50	51.5	48.0	55.0	58	23.2	2.1	[83]	51.8	56.6	47.9	43.8	48.3	53.5	62.3	46.0		
7	Arctic Lomonosov Ridge	101 (North America)	87.87	136.19	51.5	48.0	55.0	85	21.4	2.5	[83, 84, 85]	78.2	88.3	68.6	78.6	90.0	80.3	90.0	61.5		
<i>middle Eocene</i>																					
8	Seymour Island	804 (West Antarctica)	-64.28	-56.75	42.0	39.0	45.0	-67	20.9	2.1	[80]	-70.4	-62.7	-78.9	-68.3	-60.1	-77.0				
1	ODP Site 1172	801 (Australia)	-43.96	149.93	42.0	39.0	45.0	-65	24.8	1.4	[2]	-57.7	-52.8	-62.9	-57.1	-51.3	-63.6				
9	DSDP Site 277	901 (Pacific)	-52.22	166.19	42.0	39.0	45.0	-62	25.2	2.5	[79]	-55.0	-50.7	-59.9	-54.3	-49.2	-60.0				
10	Hampden beach, NZ	901 (Pacific)	-43.09	172.77	42.0	39.0	45.0	-60	24.3	0.4	[86]	-47.6	-44.3	-51.2	-46.4	-42.4	-50.7				
11	DSDP Site 511	291 (Colorado-San Jorge)	-51.00	-46.97	42.0	39.0	45.0	-55	27.0	2.5	[87]	-59.4	-54.0	-64.8	-58.6	-52.9	-64.9				
4	Tanzania	701 (South Africa)	-7.77	39.06	42.0	39.0	45.0	-19	34.0	0.1	[88]	-17.3	-14.8	-19.9	-18.7	-16.7	-20.7				
12	ODP Site 925	201 (South America)	4.20	-43.49	42.0	39.0	45.0	-2	33.0	2.5	[89]	-4.2	-2.9	-5.4	-3.4	-2.4	-4.4				
13	DSDP Site 336	301 (Eurasia)	63.35	-7.79	42.0	39.0	45.0	60	23.0	4.0	[90]	54.7	60.0	49.8	49.7	55.0	45.0				
14	ODP Site 913	102 (Greenland)	75.85	-6.95	42.0	39.0	45.0	65	25.0	4.0	[90]	64.5	72.8	57.3	63.9	72.4	56.4				
7	Arctic Lomonosov Ridge	101 (North America)	87.87	136.19	42.0	39.0	45.0	85	11.3	1.9	[91]	81.2	90.0	70.2	80.2	90.0	68.2				

Published paleolatitudes refer to values published by the original authors. Values in column paleolatitude.org and error are calculated using methods presented in this paper.

doi:10.1371/journal.pone.0126946.t002

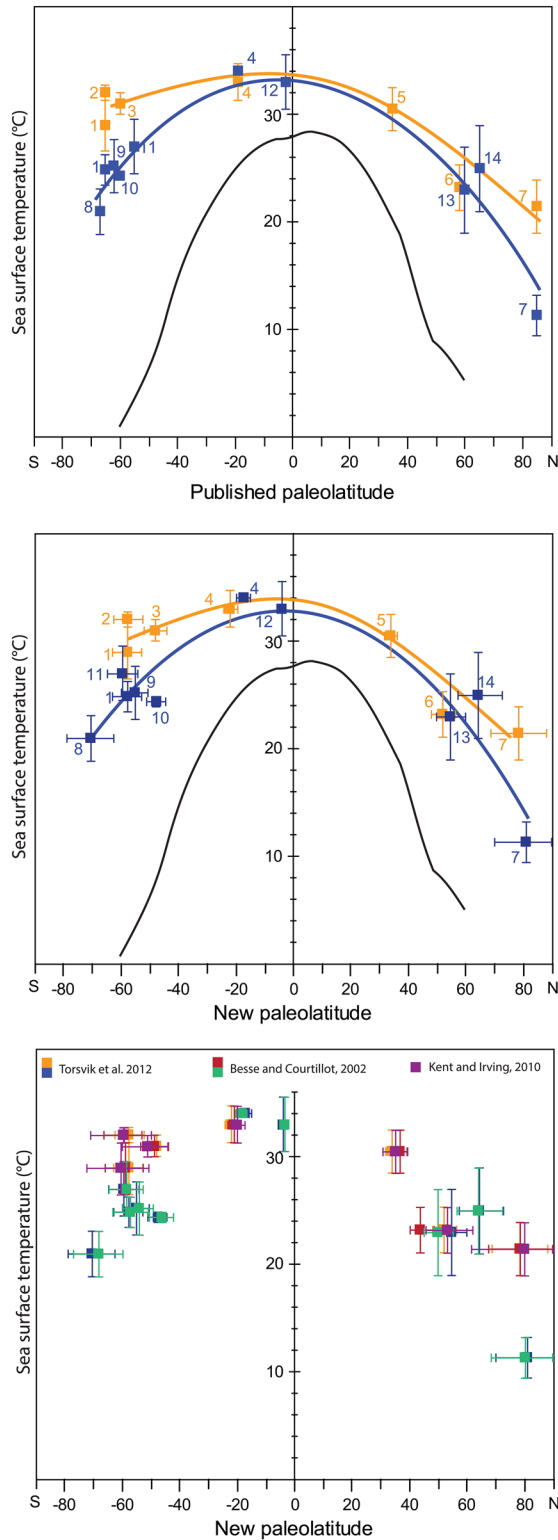


Fig 5. Latitudinal sea surface temperature (SST) gradients for the early- (orange) and middle- (blue) Eocene (modified from Bijl and colleagues [2]). See text for full derivation of data. TEX₈₆-derived SSTs (squares) were recalibrated to TEX₈₆-H following Kim and colleagues [94]. (A) with paleolatitudes as published by Bijl and colleagues [2] and references therein, (B) with paleolatitudes and error bars using the paleolatitude calculator provided with this paper (www.paleolatitude.org), in the default reference frame of

Torsvik et al. [20]. (C) comparison of paleolatitudes of the same paleotemperature data using paleomagnetic reference frames of Torsvik et al. [20], Besse and Courtillot [18] and Kent and Irving [34]. For data, see Table 2, for present-day locations see Fig 2, for reconstructed locations at 50 Ma see Fig 4.

doi:10.1371/journal.pone.0126946.g005

studies. Widely used so-called ‘mantle reference frames’ that have been developed for geodynamic research purposes cannot constrain (or were specifically corrected for) true polar wander. Because true polar wander does change the latitude of the Earth’s surface relative to the Earth’s spin axis, it is essential for paleoclimate studies to use a reference frame that includes the effects of true polar wander, i.e. a paleomagnetic reference frame. Using a mantle reference frame for paleoclimate studies could introduce a bias of more than 20° in the last 200 Myr.

Using the latest state-of-the-art of global plate reconstructions, and three recent global apparent polar wander paths, we built a user-friendly, online available paleolatitude calculator (www.paleolatitude.org) for the last 200 Myr, tailored for paleoclimate (or paleomagnetic) studies. We demonstrate the applicability and use of this tool through a case study on Eocene meridional sea surface temperature profiles: we show how enigmatically strongly varying Southern Ocean sea surface temperatures may be explained by a much larger paleolatitudinal spread of sample sites than previously appreciated.

Supporting Information

S1 Table. Total reconstruction Euler poles relative to South Africa for all elements in the plate circuit of Fig 2 of the main paper, using the rotation parameters for Africa, South America, North America, Greenland, Eurasia, Australia, East Antarctica, Madagascar, and India of Torsvik and colleagues [20], and for the remaining elements as detailed in the caption of Fig 2 in the main text.

(XLSX)

S2 Table. Total reconstruction Euler poles relative to South Africa for all elements in the plate circuit of Fig 2 of the main paper, using the rotation parameters for Africa, South America, North America, Greenland, Eurasia, Australia, East Antarctica, Madagascar, and India of Besse and Courtillot [18], and for the remaining elements as detailed in the caption of Fig 2 in the main text.

(XLSX)

S3 Table. Total reconstruction Euler poles relative to South Africa for all elements in the plate circuit of Fig 2 of the main paper, using the rotation parameters for Africa, South America, North America, Greenland, Eurasia, Australia, East Antarctica, Madagascar, and India of Kent and Irving [34], and for the remaining elements as detailed in the caption of Fig 2 in the main text.

(XLSX)

S4 Table. Apparent Polar Wander Paths in South African coordinates of Torsvik and colleagues [20], Besse and Courtillot [18], and Kent and Irving [34].

(XLSX)

S1 Text. Mathematical workflow behind the paleolatitude calculation carried out by the paleolatitude.org website.

(PDF)

Acknowledgments

This study used samples and data provided by the International Ocean Discovery Program. DJJvH and AS acknowledge the ERC for Starting Grants, numbers 306810 (SINK) and 259627 (DINOPRO), respectively. DJJvH is supported through NWO Vidi grant no 864.11.004. PKB acknowledges NWO Veni grant no 863.13.002. WS acknowledges support of the Research Council of Norway through its Centres of Excellence funding scheme, project number 223272. This paper contributes to the ESF EUROCORES program TOPO-EUROPE. AS thanks the Netherlands Earth System Science Centre (NESSC) for funding paleoclimate sensitivity science. We appreciated comments of two anonymous reviewers and editor Dana Royer.

Author Contributions

Conceived and designed the experiments: DJJvH LVdG WS PB. Performed the experiments: DJJvH LVdG SvS WS PB CGL. Analyzed the data: DJJvH LVdG PB AS HB. Contributed reagents/materials/analysis tools: SvS WS CGL. Wrote the paper: DJJvH LVdG SvS WS PB AS CGL HB.

References

1. IPCC (2013) Climate change 2013: The physical science basis. Stocker TF, Qin D, Plattner GK, Tignor M, Allen SK, et al., editors Cambridge University Press, Cambridge, United Kingdom and New York, NY, USA. 1535 pp.
2. Bijl PK, Schouten S, Sluijs A, Reichert G-J, Zachos JC, Brinkhuis H (2009) Early Palaeogene temperature evolution of the southwest Pacific Ocean. *Nature* 461: 776–779. doi: [10.1038/nature08399](https://doi.org/10.1038/nature08399) PMID: [19812670](https://pubmed.ncbi.nlm.nih.gov/19812670/)
3. Huber M, Caballero R (2011) The early Eocene equable climate problem revisited. *Climate of the Past* 7: 603–633.
4. Greenwood DR, Wing SL (1995) Eocene continental climates and latitudinal temperature gradients. *Geology* 23: 1044–1048.
5. Barron EJ (1987) Eocene equator-to-pole surface ocean temperatures: A significant climate problem? *Paleoceanography* 2: 729–739.
6. Hay WW, DeConto RM, Wold CN, Wilson KM, Voigt S, Schulz M, et al. (1999) Alternative global Cretaceous paleogeography. *Geological Society of America Special Paper* 332: 1–47.
7. Scotese C (2001) Atlas of Earth History, PALEOMAP Project. Arlington, TX. 52 pp.
8. Müller RD, Sdrolias M, Gaina C, Roest WR (2008) Age, spreading rates, and spreading asymmetry of the world's ocean crust. *Geochemistry, Geophysics, Geosystems* 9: Q04006–doi: [10.1029-2007GC001743](https://doi.org/10.1029/2007GC001743)
9. Torsvik TH, Müller RD, Van der Voo R, Steinberger B, Gaina C (2008) Global plate motion frames: Toward a unified model. *Reviews of Geophysics* 46: RG3004–doi: [10.1029-2007RG000227](https://doi.org/10.1029-2007RG000227)
10. Doubrovine PV, Steinberger B, Torsvik TH (2012) Absolute plate motions in a reference frame defined by moving hot spots in the Pacific, Atlantic, and Indian oceans. *Journal of Geophysical Research* 117: B09101–doi: [10.1029-2011JB009072](https://doi.org/10.1029-2011JB009072)
11. Steinberger B, Torsvik TH (2008) Absolute plate motions and true polar wander in the absence of hot-spot tracks. *Nature* 452: 620–623. doi: [10.1038/nature06824](https://doi.org/10.1038/nature06824) PMID: [18385737](https://pubmed.ncbi.nlm.nih.gov/18385737/)
12. Bijl PK, Bendle J, Bohaty SM (2013) Eocene cooling linked to early flow across the Tasmanian Gateway. *Proceedings of the National Academy of Sciences of the United States of America* 110: 9645–9650. doi: [10.1073/pnas.1220872110](https://doi.org/10.1073/pnas.1220872110) PMID: [23720311](https://pubmed.ncbi.nlm.nih.gov/23720311/)
13. Boyden JA, Müller RD, Gurnis M, Torsvik TH, Clark JA, Turner M, et al. (2011) Next-generation plate-tectonic reconstructions using GPlates. In: Keller R, Baru C, editors. *Geoinformatics*. Cambridge, UK. pp. 95–114.
14. Seton M, Müller RD, Zahirovic S, Gaina C, Torsvik TH, Shephard G, et al. (2012) Global continental and ocean basin reconstructions since 200 Ma. *Earth Science Reviews* 113: 212–270.
15. O'Neill C, Müller D, Steinberger B (2005) On the uncertainties in hot spot reconstructions and the significance of moving hot spot reference frames. *Geochemistry, Geophysics, Geosystems* 6: Q04003–doi: [10.1029-2004GC000784](https://doi.org/10.1029-2004GC000784)

16. Tauxe L (2010) Essentials of Paleomagnetism. University of California Press. 489 pp.
17. Butler RF (1992) Paleomagnetism. Wiley-Blackwell. 319 pp.
18. Besse J, Courtillot V (2002) Apparent and true polar wander and the geometry of the geomagnetic field over the last 200 Myr. *Journal of Geophysical Research* 107: 2300–doi: [10.1029-2000JB000050](https://doi.org/10.1029-2000JB000050)
19. Besse J, Courtillot V (1991) Revised and synthetic apparent polar wander paths of the African, Eurasian, North-American and Indian plates, and true polar wander since 200 Ma. *Journal of Geophysical Research* 96: 4029–4050.
20. Torsvik TH, Van der Voo R, Preeden U, MacNiocaill C, Steinberger B, Doubrovine P, et al. (2012) Phanerozoic polar wander, palaeogeography and dynamics. *Earth-Science Reviews* 114: 325–368.
21. Hospers J (1954) Rock Magnetism and Polar Wandering. *Nature* 173: 1183–1184.
22. Johnson CL, Constable CG, Tauxe L, Barendregt R, Brown LL, Coe RS, et al. (2008) Recent investigations of the 0–5 Ma geomagnetic field recorded by lava flows. *Geochemistry, Geophysics, Geosystems* 9: Q04032–doi: [10.1029.2007GC001696](https://doi.org/10.1029.2007GC001696)
23. Deenen MHL, Langereis CG, van Hinsbergen DJJ, Biggin AJ (2011) Geomagnetic secular variation and the statistics of palaeomagnetic directions. *Geophysical Journal International* 186: 509–520.
24. Fisher RA (1953) Dispersion on a sphere. *Proceedings of the Royal Society of London A* 217: 295–305.
25. Cox A, Hart RB (1986) Plate Tectonics, How It Works. John Wiley & Sons. 416 pp.
26. Domeier M, Torsvik TH (2014) Plate tectonics in the late Paleozoic. *Geoscience Frontiers* 5: 303–350.
27. Vine FJ, Matthews DA (1963) Magnetic anomalies over oceanic ridges. *Nature* 199: 947–949.
28. Cande SC, Kent DV (1995) Revised calibration of the geomagnetic polarity timescale for the Late Cretaceous and Cenozoic. *Journal of Geophysical Research*: 100: 6093–6095.
29. Gradstein FM, Ogg G, Schmitz M (2012) The Geologic Time Scale 2012 2-Volume Set. Amsterdam: Elsevier BV, 1140 pp.
30. Le Pichon X (1968) Sea-floor spreading and continental drift. *Journal of Geophysical Research* 73: 3661–3697.
31. McKenzie DP, Parker RL (1967) The North Pacific: an example of tectonics on a sphere. *Nature* 216: 1276–1280.
32. Doubrovine PV, Tarduno JA (2008) Linking the Late Cretaceous to Paleogene Pacific plate and the Atlantic bordering continents using plate circuits and paleomagnetic data. *Journal of Geophysical Research* 113: B07104–doi: [10.1029-2008JB005584](https://doi.org/10.1029-2008JB005584)
33. Besse J, Courtillot VE (2003) Correction to “Apparent and true polar wander and the geometry of the geomagnetic field over the last 200 Myr.” *Journal of Geophysical Research* 108: 2469, doi: [10.1029/2003JB002684](https://doi.org/10.1029/2003JB002684)
34. Kent DV, Irving E (2010) Influence of inclination error in sedimentary rocks on the Triassic and Jurassic apparent pole wander path for North America and implications for Cordilleran tectonics. *Journal of Geophysical Research* 115: B10103–doi: [10.1029-2009JB007205](https://doi.org/10.1029-2009JB007205)
35. Wilson JT (1963) A possible origin of the Hawaiian Islands. *Canadian Journal of Physics* 41: 863–870.
36. Morgan WJ (1971) Convection plumes in the lower mantle. *Nature* 230: 42–43.
37. Müller RD, Royer JY, Lawver LA, Baksi AK (1993) Revised plate motions relative to the hotspots from combined Atlantic and Indian Ocean hotspot tracks. *Geology* 21: 275–278.
38. Steinberger B, Sutherland R, O’Connell RJ (2004) Prediction of Emperor-Hawaii seamount locations from a revised model of global plate motion and mantle flow. *Nature* 430: 167–173. PMID: [15241405](https://pubmed.ncbi.nlm.nih.gov/15241405/)
39. Tarduno JA, Cottrell RD (1997) Paleomagnetic evidence for motion of the Hawaiian hotspot during formation of the Emperor seamounts. *Earth and Planetary Science Letters* 153: 171–180.
40. Tarduno JA, Bunge HP, Sleep NH, Hansen U (2009) The bent hawaiian-emperor hotspot track: inheriting the mantle wind. *Science* 324: 50–53. doi: [10.1126/science.1161256](https://doi.org/10.1126/science.1161256) PMID: [19342579](https://pubmed.ncbi.nlm.nih.gov/19342579/)
41. Gold T (1955) Instability of the Earth’s Axis of Rotation. *Nature* 175: 526–529.
42. Goldreich P, Toomre A (1969) Some remarks on polar wandering. *Journal of Geophysical Research* 74: 2555–2567.
43. van der Meer DG, Spakman W, van Hinsbergen DJJ, Amaru ML, Torsvik TH (2010) Towards absolute plate motions constrained by lower-mantle slab remnants. *Nature Geoscience* 3: 36–40.
44. Torsvik TH, Van der Voo R, Doubrovine PV, Burke K, Steinberger B, Ashwal LD, et al. (2014) Deep mantle structure as a reference frame for movements in and on the Earth. *Proceedings of the National Academy of Sciences of the United States of America* 111: 8735–8740. doi: [10.1073/pnas.1318135111](https://doi.org/10.1073/pnas.1318135111) PMID: [24889632](https://pubmed.ncbi.nlm.nih.gov/24889632/)

45. Burke K, Torsvik TH (2004) Derivation of Large Igneous Provinces of the past 200 million years from long-term heterogeneities in the deep mantle. *Earth and Planetary Science Letters* 227: 531–538.
46. Torsvik TH, Smethurst MA, Burke K, Steinberger B (2006) Large Igneous Provinces generated from the margins of the large low-velocity provinces in the deep mantle. *Geophysical Journal International* 167: 1447–1460.
47. Torsvik TH, Steinberger B, Cocks LRM, Burke K (2008) Longitude: Linking Earth's ancient surface to its deep interior. *Earth and Planetary Science Letters* 276: 273–282.
48. Torsvik TH, Burke K, Webb S, Ashwal L, Steinberger B (2010) Diamonds sampled by plumes from the core-mantle boundary. *Nature* 466: 352–355. doi: [10.1038/nature09216](https://doi.org/10.1038/nature09216) PMID: [20631796](https://pubmed.ncbi.nlm.nih.gov/20631796/)
49. Steinberger B, Torsvik TH (2012) A geodynamic model of plumes from the margins of Large Low Shear Velocity Provinces. *Geochemistry, Geophysics, Geosystems* 13: Q01W09–doi: [10.1029-2011GC003808](https://doi.org/10.1029/2011GC003808)
50. Muttoni G, Erba E, Kent DV, Bachtadse V (2005) Mesozoic Alpine facies deposition as a result of past latitudinal plate motion. *Nature* 434: 59–63. PMID: [15744297](https://pubmed.ncbi.nlm.nih.gov/15744297/)
51. Mattei M, Muttoni G, Cifelli F (2014) A record of the Jurassic massive plate shift from the Garedu Formation of central Iran. *Geology* 42: 555–558.
52. Meijers MJM, Langereis CG, van Hinsbergen DJJ, Kaymakçı N, Stephenson RA, Altiner D (2010) Jurassic–Cretaceous low paleolatitudes from the circum-Black Sea region (Crimea and Pontides) due to True Polar Wander. *Earth and Planetary Science Letters* 296: 210–226.
53. Steinberger B, Spakman W, Japsen P, Torsvik TH (2015) The key role of global solid-Earth processes in preconditioning Greenland's glaciation since the Pliocene. *Terra Nova* 27: 1–8.
54. Muttoni G, Dallanave E, Channell JET (2013) The drift history of Adria and Africa from 280 Ma to Present, Jurassic true polar wander, and zonal climate control on Tethyan sedimentary facies. *Palaeogeography, Palaeoclimatology, Palaeoecology* 386: 415–435.
55. Ganerød M, Torsvik TH, van Hinsbergen DJJ, Gaina C, Corfu F, Werner S, et al. (2011) Palaeoposition of the Seychelles microcontinent in relation to the Deccan Traps and the Plume Generation Zone in Late Cretaceous–Early Palaeogene time. *Geological Society, London, Special Publications* 357: 229–252.
56. Collier JS, Sansom V, Ishizuka O, Taylor RN, Minshull TA, Whitmarsh RB (2008) Age of Seychelles–India break-up. *Earth and Planetary Science Letters* 272: 264–277.
57. Boschman LM, van Hinsbergen DJJ, Torsvik TH, Spakman W, Pindell JL (2014) Kinematic reconstruction of the Caribbean region since the Early Jurassic. *Earth-Science Reviews* 138: 102–136
58. Vissers RLM, Meijer PT (2012) Iberian plate kinematics and Alpine collision in the Pyrenees. *Earth-Science Reviews* 114: 61–83.
59. Vissers RLM, Meijer PT (2012) Mesozoic rotation of Iberia: Subduction in the Pyrenees? *Earth-Science Reviews* 110: 93–110.
60. Vissers R, van Hinsbergen D, Meijer PT, Piccardo GB (2013) Kinematics of Jurassic ultra-slow spreading in the Piemonte Ligurian ocean. *Earth and Planetary Science Letters* 380: 138–150.
61. van Hinsbergen DJJ, Mensink M, Langereis CG, Maffione M, Spalluto L, Tropeano M, et al. (2014) Did Adria rotate relative to Africa? *Solid Earth* 5: 611–629.
62. van Hinsbergen DJJ, Vissers R, Spakman W (2014) Origin and consequences of western Mediterranean subduction, rollback, and slab segmentation. *Tectonics* 33: 393–419.
63. Nokleberg WJ, Parfenov LM, Monger JWH, Norton IO, Khanchuk A, Stone DB, et al. (2000) Phanerozoic tectonic evolution of the circum-north Pacific. *United States Geological Survey Professional Paper* 1626. 133 pp.
64. Sigloch K, Mihalynuk MG (2013) Intra-oceanic subduction shaped the assembly of Cordilleran North America. *Nature* 496: 50–56. doi: [10.1038/nature12019](https://doi.org/10.1038/nature12019) PMID: [23552944](https://pubmed.ncbi.nlm.nih.gov/23552944/)
65. van der Meer DG, Torsvik TH, Spakman W, van Hinsbergen DJJ, Amaru ML (2012) Intra-Panthalassa Ocean subduction zones revealed by fossil arcs and mantle structure. *Nature Geoscience* 5: 215–219.
66. Hall R (2012) Late Jurassic–Cenozoic reconstructions of the Indonesian region and the Indian Ocean. *Tectonophysics* 570–571: 1–41. doi: [10.1109/EMBC.2012.6345995](https://doi.org/10.1109/EMBC.2012.6345995) PMID: [23365956](https://pubmed.ncbi.nlm.nih.gov/23365956/)
67. van Hinsbergen DJJ, Kapp P, Dupont-Nivet G, Lippert PC, DeCelles PG, et al. (2011) Restoration of Cenozoic deformation in Asia, and the size of Greater India. *Tectonics* 30: TC5003–doi: [10.1029-2011TC002908](https://doi.org/10.1029/2011TC002908)
68. van Hinsbergen DJJ, Schmid SM (2012) Map view restoration of Aegean–West Anatolian accretion and extension since the Eocene. *Tectonics* 31: TC5005, doi: [10.1029/2012TC003132](https://doi.org/10.1029/2012TC003132)
69. van Hinsbergen DJ, Lippert PC, Dupont-Nivet G, McQuarrie N, Doubrovine PV, Spakman W, et al. (2012) Greater India Basin hypothesis and a two-stage Cenozoic collision between India and Asia.

Proceedings of the National Academy of Sciences of the United States of America 109: 7659–7664. doi: [10.1073/pnas.1117262109](https://doi.org/10.1073/pnas.1117262109) PMID: [22547792](https://pubmed.ncbi.nlm.nih.gov/22547792/)

70. McQuarrie N, van Hinsbergen DJJ (2013) Retrodeforming the Arabia-Eurasia collision zone: Age of collision versus magnitude of continental subduction. *Geology* 41: 315–318.
71. Stampfli GM, Borel GD (2002) A plate tectonic model for the Paleozoic and Mesozoic constrained by dynamic plate boundaries and restored synthetic oceanic isochrons. *Earth and Planetary Science Letters* 196: 17–33.
72. Golonka J, Bocharova NY, Ford D, Edrich ME (2003) Paleogeographic reconstructions and basins development of the Arctic. *Marine and Petroleum Geology* 20: 211–248
73. Barrier E, Vrielynck B (2008) MEBE Atlas of Paleotectonic maps of the Middle East. Paris: Commission for the Geological Map of the World, Paris. 14 maps, 1: 18500000.
74. Zahirovic S, Seton M, Müller RD (2014) The Cretaceous and Cenozoic tectonic evolution of Southeast Asia. *Solid Earth* 5: 227–273.
75. Hall R (2002) Cenozoic geological and plate tectonic evolution of SE Asia and the SW Pacific: computer-based reconstructions, model and animations. *Journal of Asian Earth Sciences* 20: 353–431.
76. Schellart WP, Lister GS, Toy VG (2006) A Late Cretaceous and Cenozoic reconstruction of the Southwest Pacific region: Tectonics controlled by subduction and slab rollback processes. *Earth-Science Reviews* 76: 191–233.
77. Zachos JC, Dickens GR, Zeebe RE (2008) An early Cenozoic perspective on greenhouse warming and carbon-cycle dynamics. *Nature* 451: 279–283. doi: [10.1038/nature06588](https://doi.org/10.1038/nature06588) PMID: [18202643](https://pubmed.ncbi.nlm.nih.gov/18202643/)
78. Hollis CJ, Taylor KWR, Handley L, Pancost RD, Huber M, Creech JB, et al. (2012) Early Paleogene temperature history of the Southwest Pacific Ocean Reconciling proxies and models. *Earth and Planetary Science Letters* 349–350: 53–66.
79. Hollis CJ, Handley L, Crouch EM, Morgans HEG, Baker JA, Creech J, et al. (2009) Tropical sea temperatures in the high-latitude South Pacific during the Eocene. *Geology* 37:
80. Douglas PMJ, Affek HP, Ivany LC, Houben AJP, Sijp WP, Sluijs A, et al. (2014) Pronounced zonal heterogeneity in Eocene southern high-latitude sea surface temperatures. *Proceedings of the National Academy of Sciences of the United States of America* 111: 6582–6587. doi: [10.1073/pnas.1321441111](https://doi.org/10.1073/pnas.1321441111) PMID: [24753570](https://pubmed.ncbi.nlm.nih.gov/24753570/)
81. Pearson PN, van Dongen BE, Nicholas CJ, Pancost RD, Schouten S, Singano JM, et al. (2007) Stable warm tropical climate through the Eocene Epoch. *Geology* 35: 211.
82. Sluijs A, Brinkhuis H, Crouch EM, John CM, Handley L, Munsterman D, et al. (2008) Eustatic variations during the Paleocene-Eocene greenhouse world. *Paleoceanography* 23: PA4216, doi: [10.1029/2008PA001615](https://doi.org/10.1029/2008PA001615)
83. Frieling J, Iakovleva AI, Reichart G-J, Aleksandrova GN, Gribidenko ZN, et al. (2014) Paleocene—Eocene warming and biotic response in the epicontinental West Siberian Sea. *Geology* 42: 767–770.
84. Sluijs A, Schouten S, Pagani M, Woltering M (2006) Subtropical Arctic Ocean temperatures during the Palaeocene/Eocene thermal maximum. *Nature* 441: 610–613. PMID: [16752441](https://pubmed.ncbi.nlm.nih.gov/16752441/)
85. Sluijs A, Schouten S, Donders TH, Schoon PL (2009) Warm and wet conditions in the Arctic region during Eocene Thermal Maximum 2. *Nature Geoscience* 2: 777–780.
86. Burgess CE, Pearson PN, Lear CH, Morgans HEG, Handley L, Pancost RD, et al. (2008) Middle Eocene climate cyclicity in the southern Pacific: Implications for global ice volume. *Geology* 36: 651–654.
87. Houben A (2012) Triggers and consequences of glacial expansion across the Eocene-Oligocene Transition. *Utrecht Studies in Earth Sciences* 28: 170 pp.
88. Pearson PN, Foster GL, Wade BS (2009) Atmospheric carbon dioxide through the Eocene—Oligocene climate transition. *Nature* 461: 1110–1113. doi: [10.1038/nature08447](https://doi.org/10.1038/nature08447) PMID: [19749741](https://pubmed.ncbi.nlm.nih.gov/19749741/)
89. Zhang YG, Pagani M, Liu Z, Bohaty SM, DeConto R (2013) A 40-million-year history of atmospheric CO₂. *Philosophical Transactions of the Royal Society A* 373: 20130096.
90. Liu Z, Pagani M, Zinniker D, DeConto R, Huber M, Brinkhuis H, et al. (2009) Global cooling during the Eocene-Oligocene climate transition. *Science* 323: 1187–1190. doi: [10.1126/science.1166368](https://doi.org/10.1126/science.1166368) PMID: [19251622](https://pubmed.ncbi.nlm.nih.gov/19251622/)
91. Sangiorgi F, van Soelen EE, Spofforth DJA, Pälike H, Stickley CE, St John K, et al. (2008) Cyclicity in the middle Eocene central Arctic Ocean sediment record: Orbital forcing and environmental response. *Paleoceanography* 23: PA1S08, doi: [10.1029/2007PA001487](https://doi.org/10.1029/2007PA001487)
92. Huber M, Brinkhuis H, Stickley CE, Döös K, Sluijs A, Warnaar J, et al. (2004) Eocene circulation of the Southern Ocean: Was Antarctica kept warm by subtropical waters? *Paleoceanography* 19: PA4026, doi: [10.1029/2004PA001014](https://doi.org/10.1029/2004PA001014)

93. Bijl PK, Pross J, Warnaar J, Stickley CE, Huber M, Guerin R, et al. (2011) Environmental forcings of Paleogene Southern Ocean dinoflagellate biogeography. *Paleoceanography* 26: PA1202. doi: [10.1029/2009PA001905](https://doi.org/10.1029/2009PA001905)
94. Kim J-H, van der Meer J, Schouten S, Helmke P, Willmott V, Sangiorgi F, et al. (2010) New indices and calibrations derived from the distribution of crenarchaeal isoprenoid tetraether lipids: Implications for past sea surface temperature reconstructions. *Geochimica et Cosmochimica Acta* 74: 4639–4654.